

<b>Title:</b>	How to configure the picture storage in HikCentral 1.3	<b>Version:</b>	v1.0	<b>Date:</b>	12/3/2018
<b>Product:</b>	Hybrid SAN			<b>Page:</b>	1 of 6

## Preparation

1. The version of Hybrid SAN must be 235-2 (or later)

### HIKVISION DS-A81016S management

Intelligent, individual, economic and reliable data storage.

Log in to the System: Basic Management ▼

User Name: web\_admin

Password:

Mode: Advanced Mode ▼

Enter

HIKVISION DS-A81016S

System Version: Hybrid\_SAN V2.3.5-2 Device Serial No.: 20120808

HIKVISION Copyright@ © 2018

235-2

<b>Title:</b>	How to configure the picture storage in HikCentral 1.3	<b>Version:</b>	v1.0	<b>Date:</b>	12/3/2018
<b>Product:</b>	Hybrid SAN			<b>Page:</b>	2 of 6

## How to configure the picture storage in HikCentral 1.3

### 1. Configure the Hybrid SAN service in website

#### 1) Start the Hybrid SAN service

You can refer to the “Hybrid SAN Deployment Document.pdf” to start the Hybrid SAN service first.

#### Note:

400 FTP: /00 Oversea Products/01 IP/13 Installation & How to & FAQ & Solution/05 Storage/Hybrid SAN/Deployment Document/Hybrid SAN Deployment Document build.pdf

DS-A82024D management

Hybrid SAN -> Hybrid SAN

Hybrid SAN Service Status: Working [Pause Hybrid SAN Service](#) [One-Key Configuration](#) [Configure Hybrid SAN](#) [Backup and Restore](#)

[Hybrid SAN System Login](#)

Record Volume ID	Record Volume Name	Used LUN Number	Total(MB)	Used(MB)	Free(MB)	Video Retention Time	Overwrite	Usage	Options
0	RV_1	4/4	802237	119750	682487	5	Overwrite	Video Storage	

LUN Name	LUN ID	Total(MB)	Block Size(Byte)	Usage
LUN_BACK1	0	51,200	512	Hybrid SAN(Reserve)
LUN_BACK2	1	51,200	512	Hybrid SAN(Reserve)
LUN_RV_1	2	141,696	512	Hybrid SAN(Record Volume)
LUN_RV_2	3	254,336	512	Hybrid SAN(Record Volume)
LUN_RV_3	4	254,336	512	Hybrid SAN(Record Volume)
LUN_PRIVATE1	5	51,200	512	Hybrid SAN(Private Volume 1)
LUN_PRIVATE2	6	51,200	512	Hybrid SAN(Private Volume 2)
LUN_RV_4	7	151,936	512	Hybrid SAN(Record Volume)

If you start the Hybrid SAN service via the **one-key configuration**, all the record volumes will be used for video storage. Next step you need to create record volume for picture storage.

#### 2) Configure the Lun for picture storage

Click the RV\_1 which is used for the video storage, then remove some luns inside.

DS-A82024D management

Hybrid SAN -> Hybrid SAN

Hybrid SAN Service Status: Working [Pause Hybrid SAN Service](#) [One-Key Configuration](#) [Configure Hybrid SAN](#) [Backup and Restore](#)

[Hybrid SAN System Login](#)

Record Volume ID	Record Volume Name	Used LUN Number	Total(MB)	Used(MB)	Free(MB)	Video Retention Time	Overwrite	Usage	Options
0	RV_1	4/4	802237	119628	682409	5	Overwrite	Video Storage	

LUN Name	LUN ID
LUN_BACK1	0
LUN_BACK2	1
LUN_RV_1	2
LUN_RV_2	3
LUN_RV_3	4
LUN_PRIVATE1	5
LUN_PRIVATE2	6
LUN_RV_4	7

**RV\_1**

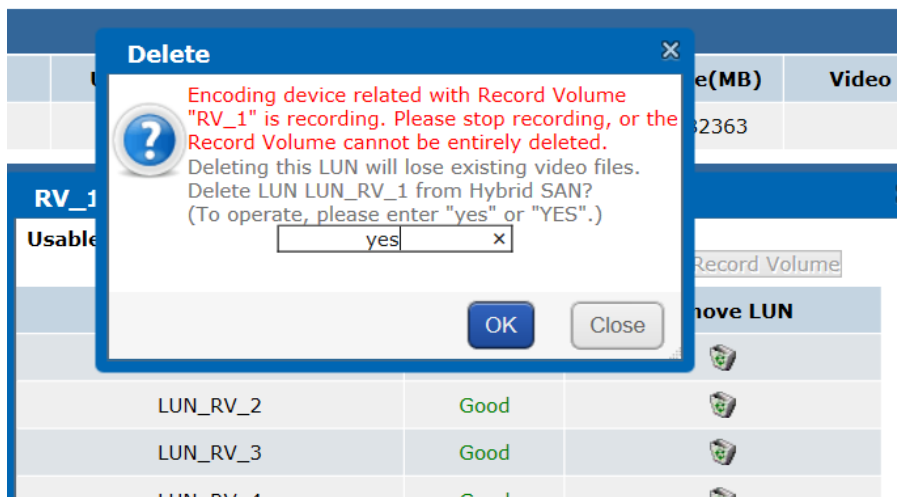
Usable LUN: [Repair Record Volume](#) [Expand Record Volume](#)

LUN being used	Status	Remove LUN
LUN_RV_1	Good	
LUN_RV_2	Good	
LUN_RV_3	Good	
LUN_RV_4	Good	

2. Remove 1 or 2 lun from the RV\_1

Usage
Hybrid SAN(Reserve)
Hybrid SAN(Reserve)
Hybrid SAN(Record Volume)
Hybrid SAN(Record Volume)
Hybrid SAN(Record Volume)
Hybrid SAN(Record Volume)
Hybrid SAN(Private Volume 1)
Hybrid SAN(Private Volume 2)
Hybrid SAN(Record Volume)

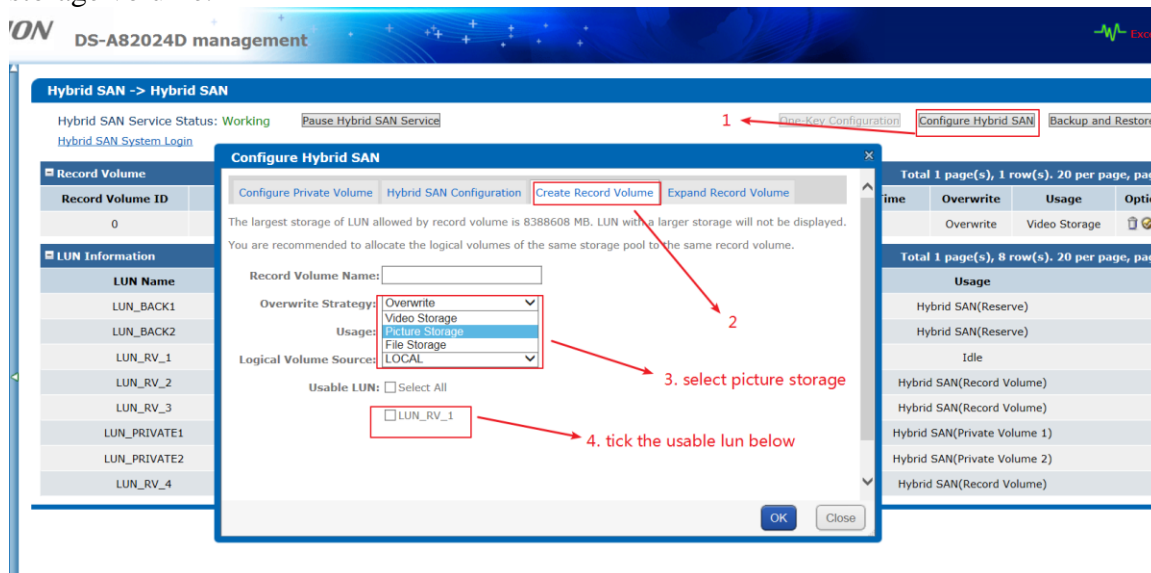
<b>Title:</b>	How to configure the picture storage in HikCentral 1.3	<b>Version:</b>	v1.0	<b>Date:</b>	12/3/2018
<b>Product:</b>	Hybrid SAN			<b>Page:</b>	3 of 6



**Note:**

Execute this operation must be stop all the recording business and the record lun must be empty!! If Hybrid SAN have start to record for a long time ,please contact HQ technical support engineer to help.

After you remove the record volume from the video RV\_1, you can continue to create the picture storage volume.



<b>Title:</b>	How to configure the picture storage in HikCentral 1.3	<b>Version:</b>	v1.0	<b>Date:</b>	12/3/2018
<b>Product:</b>	Hybrid SAN			<b>Page:</b>	4 of 6

**Hybrid SAN -> Hybrid SAN**

Hybrid SAN Service Status: Working [Pause Hybrid SAN Service](#) [One-Key Configuration](#) [Configure Hybrid SAN](#) [Backup and Restore](#)

[Hybrid SAN System Login](#)

Record Volume ID	Record Volume Name	Used LUN Number	Total(MB)	Used(MB)	Free(MB)	Video Retention Time	Overwrite	Usage	Options
0	RV_1	2/2	14380083	0	14380083	0	Overwrite	Video Storage	
1	pic	1/1	8387966	0	8387966	0	Overwrite	Picture Storage	

LUN Name	LUN ID	Total(MB)	Block Size(Byte)	Usage
LUN_PRIVATE1	0	51,200	512	Hybrid SAN(Private Volume 1)
LUN_PRIVATE2	1	51,200	512	Hybrid SAN(Private Volume 2)
LUN_RV_1	2	8,388,608	512	Hybrid SAN(Record Volume)
LUN_RV_2	3	8,388,608	512	Hybrid SAN(Record Volume)
LUN_RV_3	4	5,992,576	512	Hybrid SAN(Record Volume)

## 2. Download the key from the Hybrid SAN system

### 1) Login the Hybrid SAN system

**Hybrid SAN -> Hybrid SAN**

Hybrid SAN Service Status: Working [Pause Hybrid SAN Service](#) [One-Key Configuration](#) [Configure Hybrid SAN](#) [Backup and Restore](#)

[Hybrid SAN System Login](#)

Record Volume ID	Record Volume Name	Used LUN Number	Total(MB)	Used(MB)	Free(MB)	Video Retention Time	Overwrite	Usage	Options
0	RV_1	3/3	660553	244	660309	0	Overwrite	Video Storage	
1	pic	1/1	141684	0	141684	0	Overwrite	Picture Storage	

LUN Name	LUN ID	Total(MB)	Block Size(Byte)	Usage
LUN_BACK1	0	51,200	512	Hybrid SAN(Reserve)
LUN_BACK2	1	51,200	512	Hybrid SAN(Reserve)
LUN_RV_1	2	141,696	512	Hybrid SAN(Record Volume)
LUN_RV_2	3	254,336	512	Hybrid SAN(Record Volume)
LUN_RV_3	4	254,336	512	Hybrid SAN(Record Volume)
LUN_PRIVATE1	5	51,200	512	Hybrid SAN(Private Volume 1)
LUN_PRIVATE2	6	51,200	512	Hybrid SAN(Private Volume 2)
LUN_RV_4	7	151,936	512	Hybrid SAN(Record Volume)

**HIKVISION DS-A82024D management**

Intelligent, individual, economic and reliable data storage.

Log in to the System: Hybrid SAN

User Name: nvr\_admin

Password: .....

Mode: Advanced Mode

**Enter**

HIKVISION DS-A82024D  
System Version:Hybrid\_SAN V2.3.5-2 Device Serial No.:20120808

HIKVISION Copyright@ © 2018

<b>Title:</b>	How to configure the picture storage in HikCentral 1.3	<b>Version:</b>	v1.0	<b>Date:</b>	12/3/2018
<b>Product:</b>	Hybrid SAN			<b>Page:</b>	5 of 6

## 2) Download the key

1. accesskey=  
2. secretkey=

## 3. Add the Hybrid SAN to the HikCentral 1.3

1) Login the VMS, add the Hybrid SAN in Physical View----Recording Server

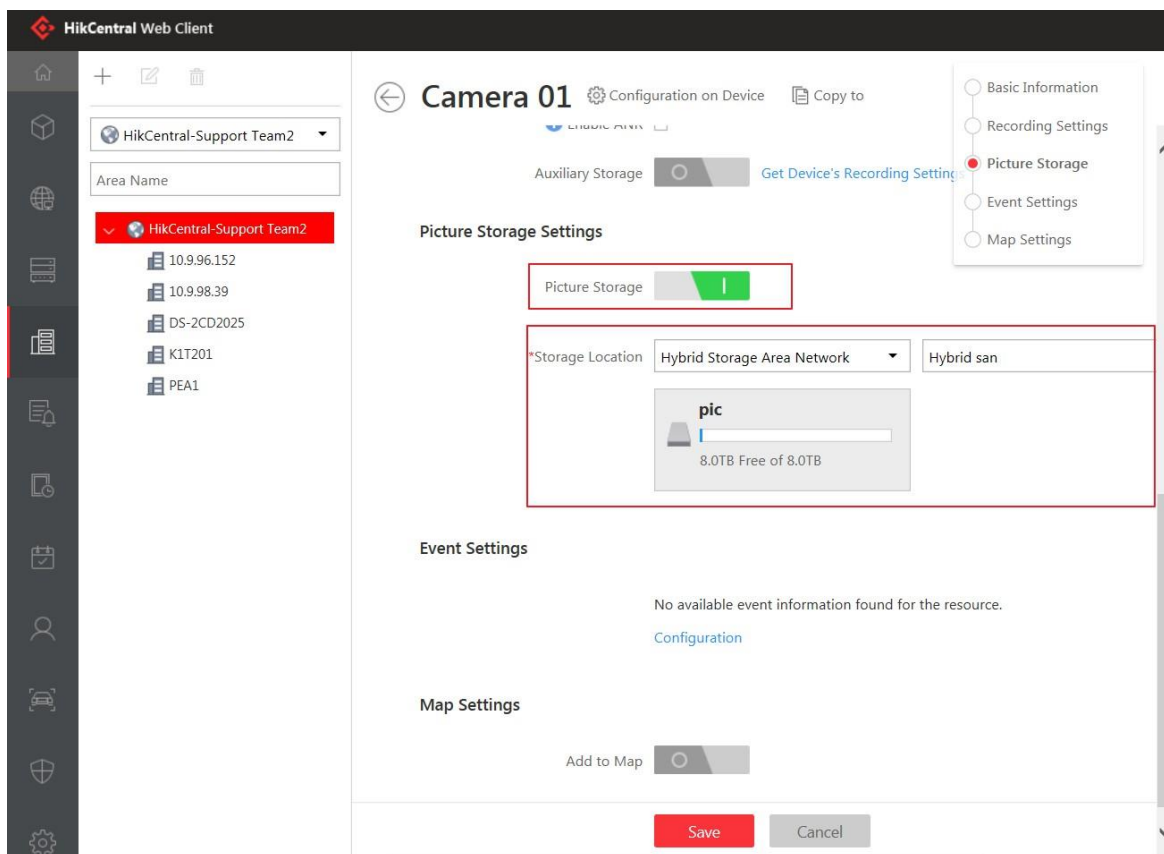
**Note:**

**Picture downloading port: 6120**

**Signaling gateway port: 6011**

## 2) Make record plan for camera picture storage

<b>Title:</b>	How to configure the picture storage in HikCentral 1.3	<b>Version:</b>	v1.0	<b>Date:</b>	12/3/2018
<b>Product:</b>	Hybrid SAN			<b>Page:</b>	6 of 6



**First Choice for Security Professionals**  
**HIKVISION Technical Support**