

Title:	How to add Body Worn Camera to iVMS-5200 Mobile	Version:	v1.0	Date:	8/8/2019
Product:	Body Worn Camera			Page:	1 of 4

Preparation

1. Prepare the Body Camera Assistant tool

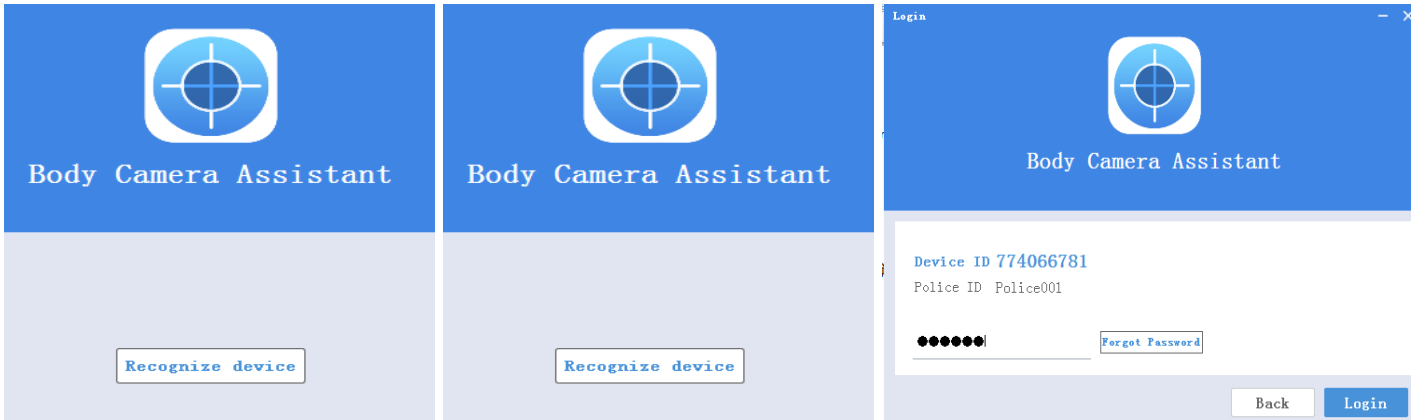
How to add Body Worn Camera to iVMS-5200 Mobile

1. Configuration on Body Worn Camera

- 1) Install Body Camera Assistant Software, then connect body worn camera to computer through USB cable, and run Body Camera Assistant tool.



- 2) Click “Recognize device” to recognize device, then input password to login, the default password is 123456.



- 3) Enter into Device Configuration-Network settings page, fill in Wi-Fi or dial parameters.

Title:	How to add Body Worn Camera to iVMS-5200 Mobile	Version:	v1.0	Date:	8/8/2019
Product:	Body Worn Camera			Page:	2 of 4

774066781 Media Information Device Configuration Log Information

Device Information WiFi Parameters

Time Settings

Network Settings

Security Settings

Platform Settings

Static WiFi Configuration

System Settings

Enable

SSID: HIK-Office

Key: HIKhik@2017

Dial Parameters

Enable Dialing

APN Parameters

Name:

Dial Number:

UserName:

Password:

MTU: 0

Identification Type: Auto

Save

- 4) The Wi-Fi or 4G icon on body worn camera will light when connected successfully.



- 5) Enter into Platform Settings page, click enable, fill in IP and Device ID, click save. Server address is the same as computer's IP address, if you use public network, you need fill in public IP address or domain name here. Device ID is editable. All other values are kept as defaults.

Title:	How to add Body Worn Camera to iVMS-5200 Mobile	Version:	v1.0	Date:	8/8/2019
Product:	Body Worn Camera			Page:	3 of 4

The screenshot shows the configuration page for device ID 774066781. The left sidebar contains menu items: Device Information, Time Settings, Network Settings, Security Settings, Platform Settings, Static WiFi Configuration, and System Settings. The main content area is titled 'Platform Parameters' and includes a red-bordered box containing the following settings:

- Enable
- IP Domain name
- IP: 10.16.112.33
- Port: 7660
- Device ID: MH2111

Below the red box is a blue 'Save' button.

2. Add Body Worn Camera to iVMS-5200 Mobile

- 1) Login iVMS-5200 mobile platform, add body worn camera in Physical View page. Choose the device type as “Portable Device”, then fill in Alias and Device Number to add. Device ID should be same as the one in body camera platform settings.

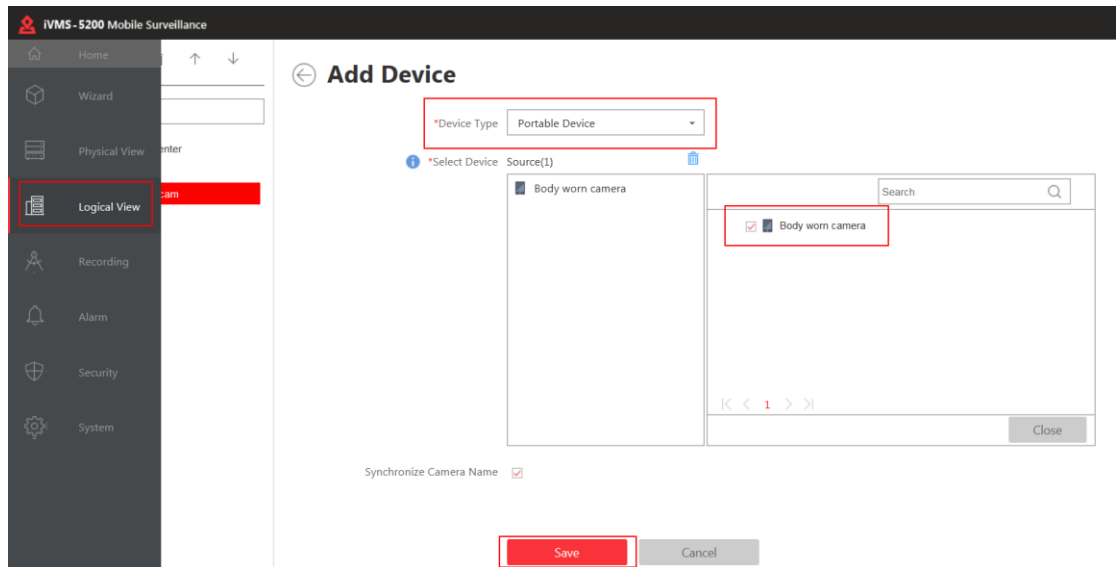
The screenshot shows the 'Add Portable Device' form in the iVMS-5200 Mobile Surveillance application. The left sidebar has a menu with 'Portable Device' selected. The form fields are as follows:

- Adding Mode:** Single ID ID Segment
- Device Type:** Portable Video Recorder
- Manufacturer:** HIKVISION
- Alias:** Body worn camera (with a green checkmark)
- Device ID:** MH2111 (with a green checkmark and a red border)
- IP Address:** (empty)
- Port No.:** (empty)
- User Name:** (empty)
- Password:** (empty)

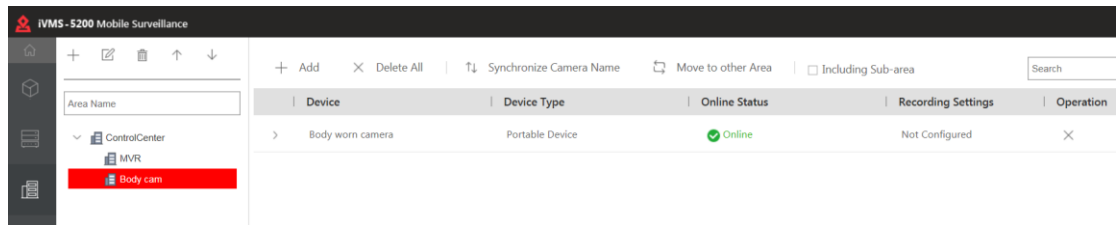
At the bottom, there are three buttons: 'Add' (red), 'Add and Continue' (red), and 'Cancel' (grey).

- 2) Enter into “Logical View” page to add device video channel and alarm channel.

Title:	How to add Body Worn Camera to iVMS-5200 Mobile	Version:	v1.0	Date:	8/8/2019
Product:	Body Worn Camera			Page:	4 of 4



- 3) It will show “online” when added successfully. Then running 5200 control client to live view or playback and so on.



First Choice for Security Professionals
HIKVISION Technical Support