

<b>Title:</b>	How to enable Lite mode	<b>Version:</b>	v1.0	<b>Date:</b>	6/25/2019
<b>Product:</b>	DVR			<b>Page:</b>	1

## How to enable Lite Mode

### Description

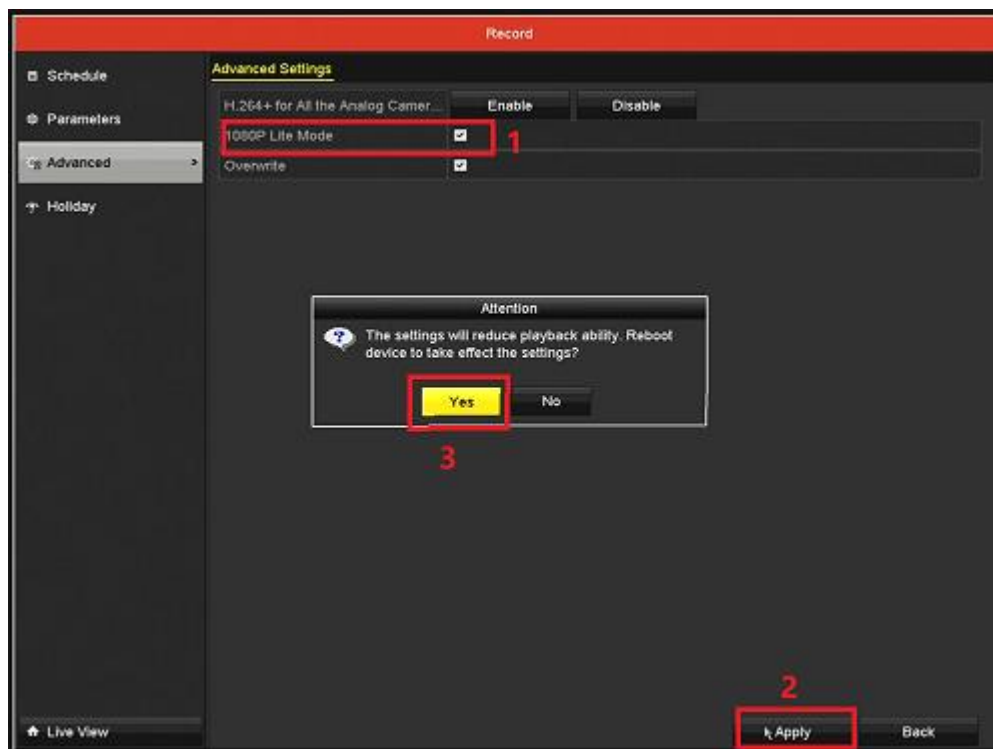
As for some DVR models which supports Lite Mode, we can enable Lite Mode in the local GUI. I will take how to enable 1080P lite mode as example.

### Preparation

DVR [71/72 HG/HQ-F/K series], Displayer, Mouse

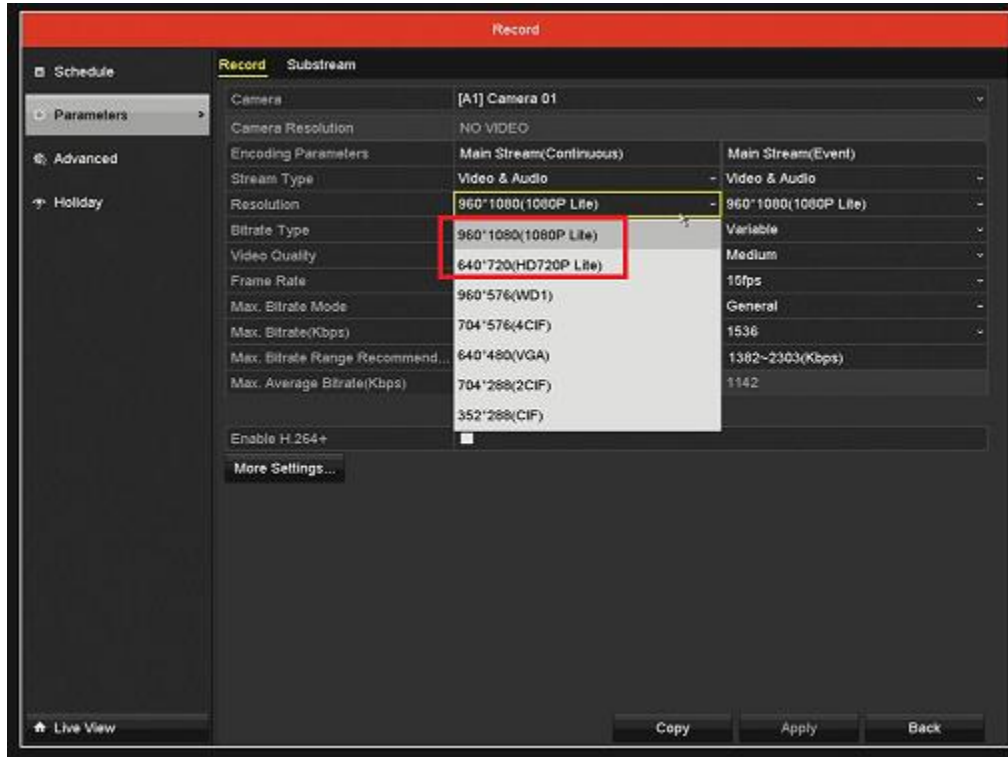
### Steps:

1. Enter *Record-Advanced-Advanced Settings*, and enable 1080P lite mode. It will hint an Attention. “The setting will reduce playback ability. Reboot device to take affect the settings?” Then click “Yes” to enable the Lite Mode function.



<b>Title:</b>	How to enable Lite mode	<b>Version:</b>	v1.0	<b>Date:</b>	6/25/2019
<b>Product:</b>	DVR			<b>Page:</b>	2

2. We can check this function in *Record-Parameter –record*.



**First Choice for Security Professionals**

**HIKVISION Technical Support**