


Video Intercom Second Generation

Indoor station v2.1.2_build191014

Module door station v 2.0.8_build191029

Firmware Release Note (2019-10-22)

Device Model:  Device Model.xlsx	Firmware Version	2nd Gen Indoor Station v2.1.2_build191014 Module Door Station v 2.0.8_build191029 Sub-module v1.0.0_build191009 Display module v1.0.1_build190814
	SDK Version	HCNetSDK V6.1.0.45_build201909
	Hik-Connect APP	v3.10.3_345742

Reason of Upgrade

Optimize the legacy issues of the v2.0.0 baseline version and implement several new features;

Involved model

2nd Gen indoor station

DS-KH8350-WTE1/ DS-KH8350-TE1

DS-KH6320-WTE1/ DS-KH6320-TE1

DS-KH8520-WTE1

Module door station

DS-KD8003-IME1

DS-KD-KK/DS-KD-KP/ DS-KD-IN DS-KD-M/ DS-KD-E

DS-KD-DIS

2nd Gen 2-wire device

DS-KH6320-WTE2

DS-KD8003-IME2

New Features

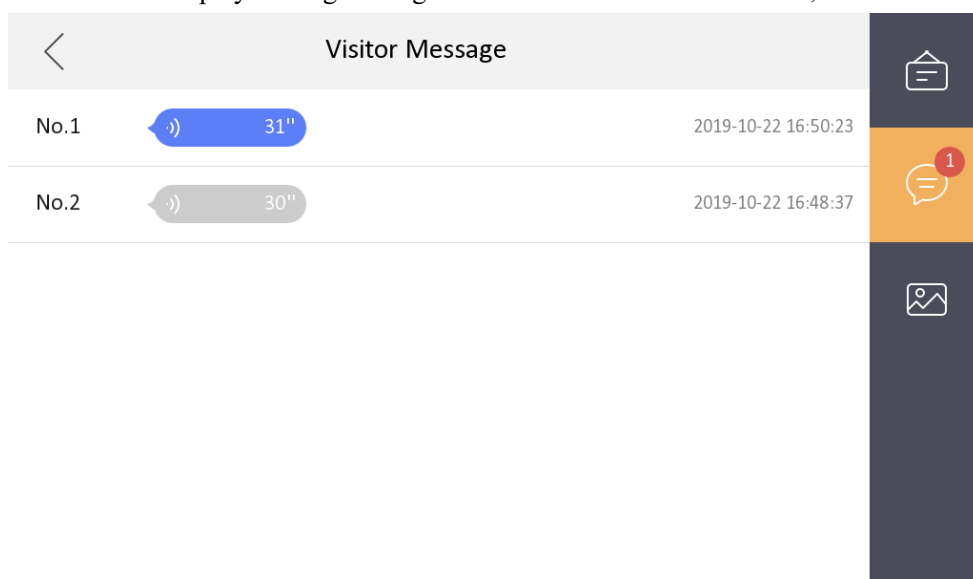
Indoor Station

1. Allows the indoor station to support capturing images, leaving messages, and receiving iVMS-4200 client message without an SD card. But restarting will cause this information to be lost. (Note: When the device has data, insert the SD card. The device will clear the existing information which already stored in the device);

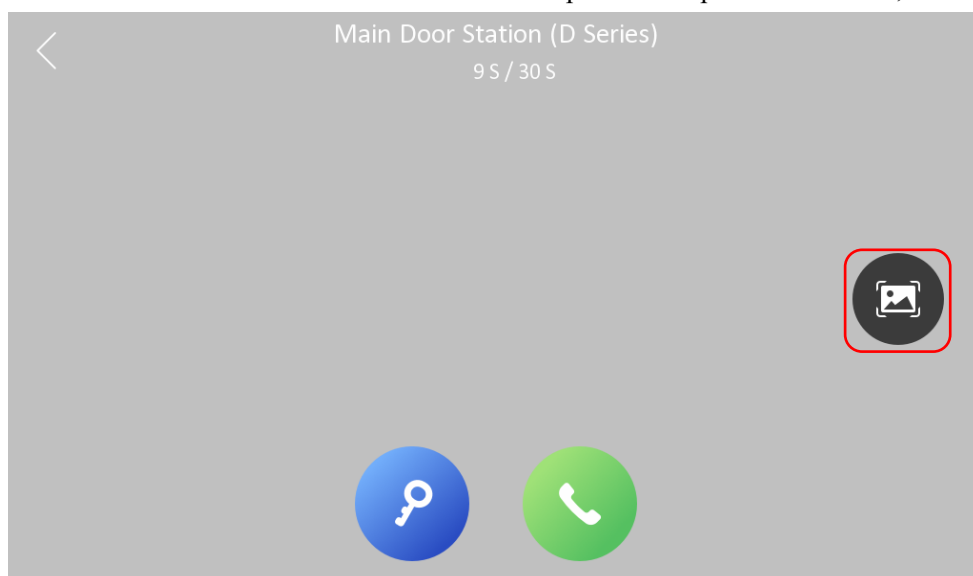
Total device memory capacity	2MB
Max. SD card capacity	32GB
capturing image/ per.	200kb
leaving message / per.	50kb~300kb
client message / per.	About 100kb~400kb

If the memory is full, the device will overwrite the old data with new ones

2. Indoor station play leaving message interface to add animation effect;

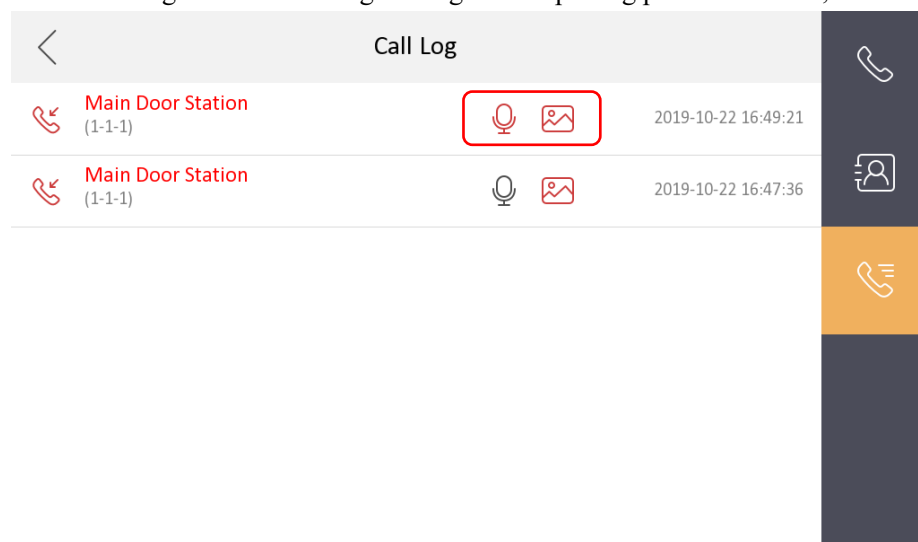


3. Add the function of the door station and IPC capture in the preview interface;

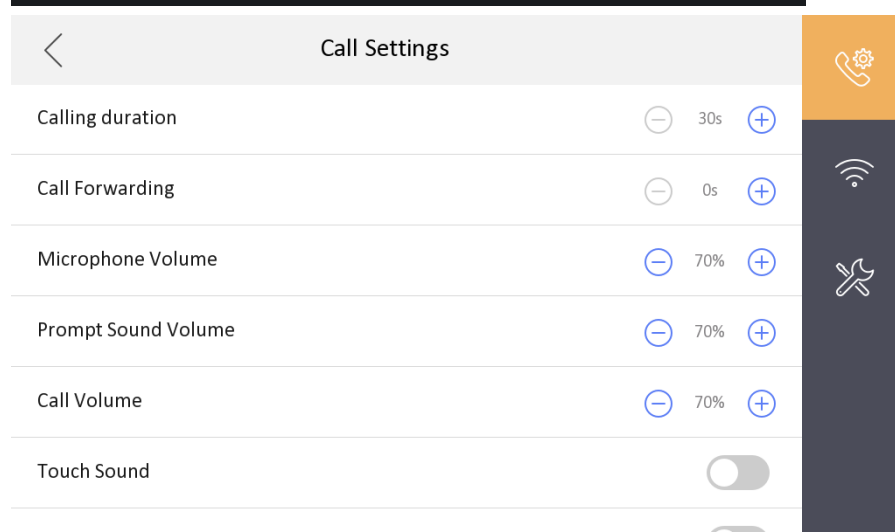
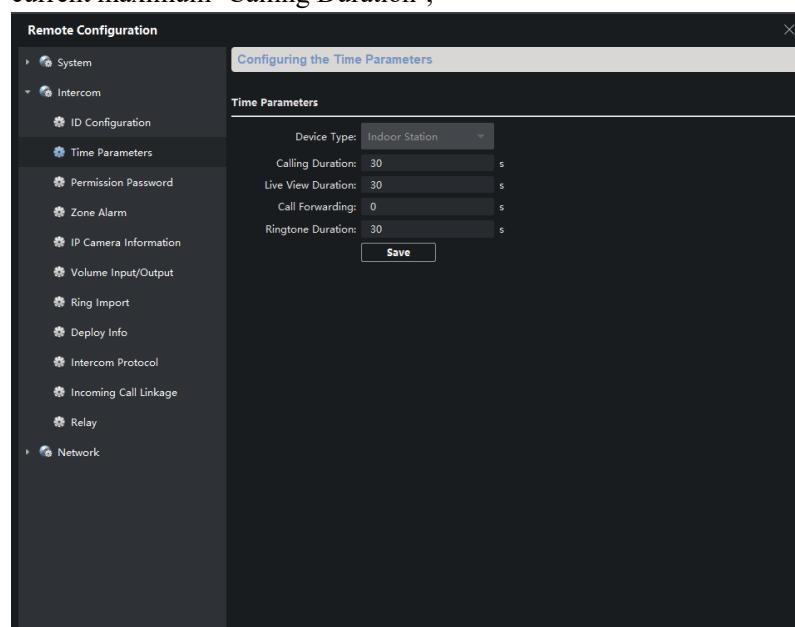


4. Add the automatically hang up function, when you click the unlock button, it will exit the current interface after 5s;

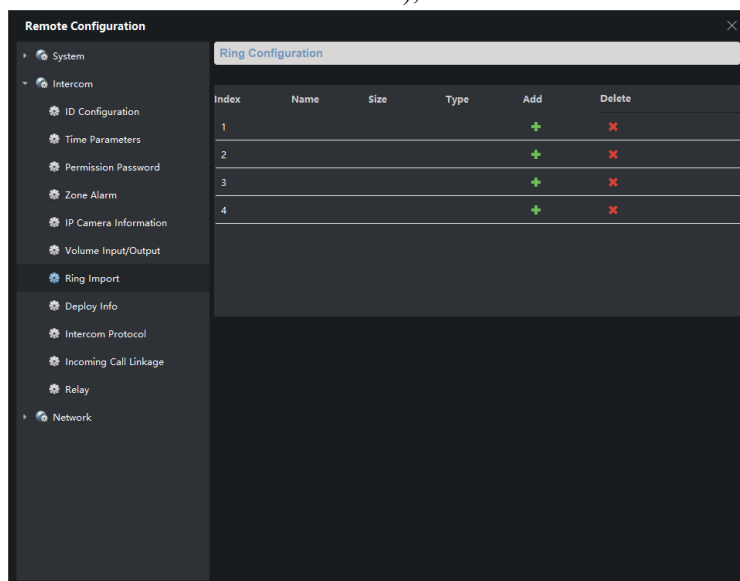
5. Add call log associate leaving message and capturing picture function;



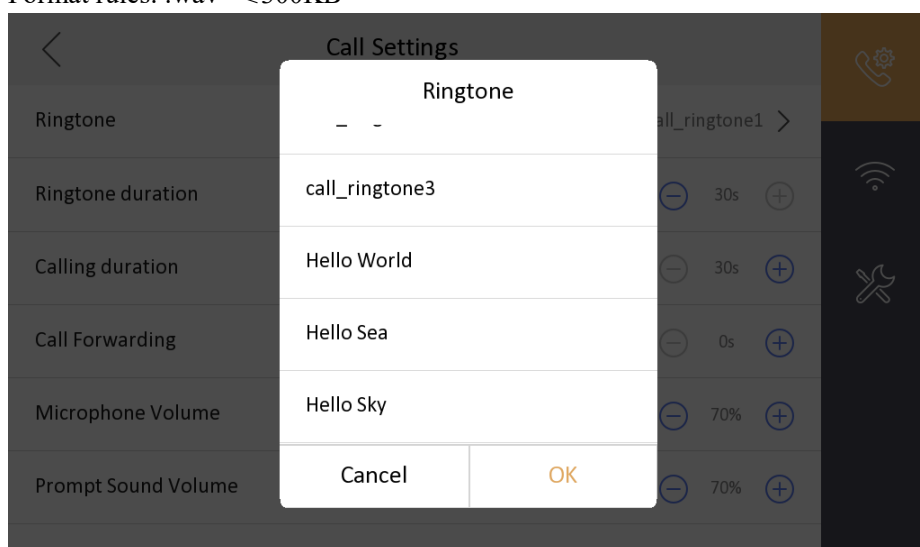
6. Indoor station 'Ringtone Duration' support configuration, the maximum does not exceed the current maximum 'Calling Duration';



7. Add iVMS-4200 client to import ringtones to indoor station (Up to 4 can be imported, 3 by default, a total of 7 for customers to choose);



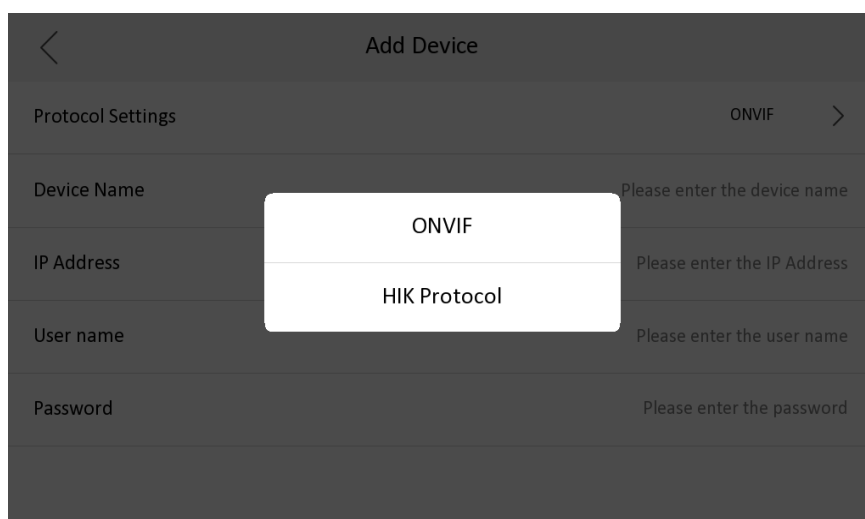
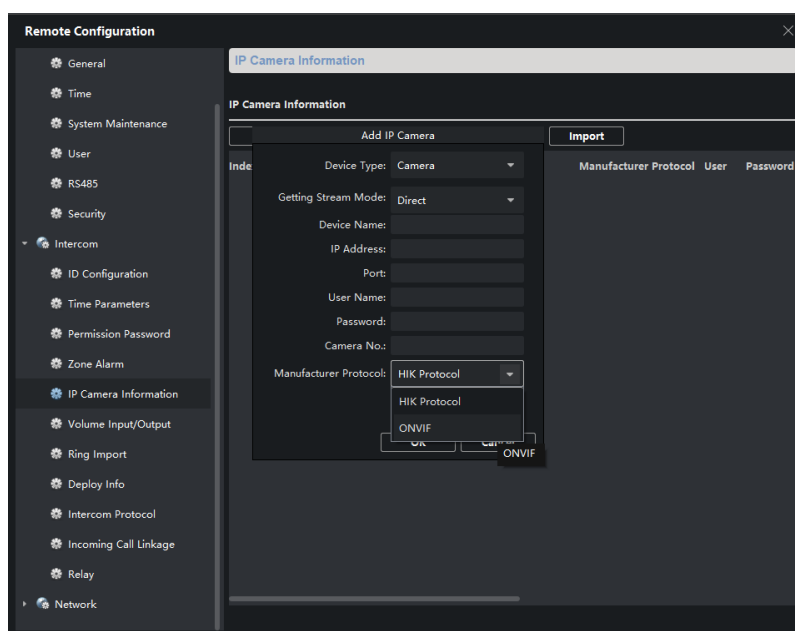
Format rules: .wav ≤300KB



8. Add the function of switching preview screen to IPC when the indoor station is called;

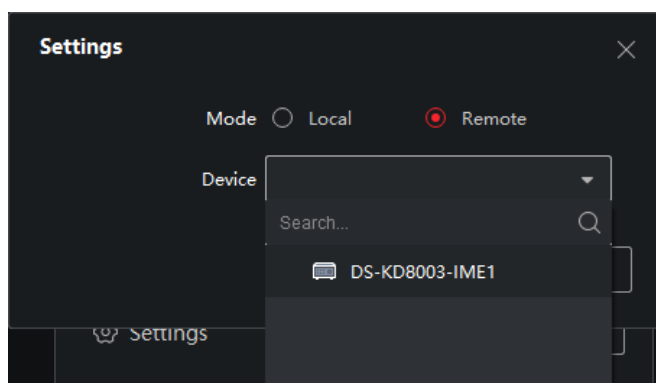


9. Add the function of indoor station can add third-party IPC through ONVIF protocol.



Module door station

1. Add the function of module door station IP address voice broadcast. Within 10 seconds after the device is started, press the button of the main module for 5 times, and the device will broadcast the current IP address in English;
2. Module door station supports card issuing via iVMS-4200;



3. Module door station supports Outer Door Station function;

Remote Configuration

Configuring the Room Numbers

Device No. Configuration

Device Type: Door Station

Community No.: Door Station

Building No.: Outer Door Station

Unit No.: 1

Floor No.: 1

No.: 0

Save

4. Add iVMS-4200 client to import 'waiting ringtone' to module door station (Up to 1 can be imported);

Remote Configuration

Ring Configuration

Index	Name	Size	Type	Add	Delete
1				+	-

5. Module door station supports external card reader. External card reader supports swiping card and password unlocking

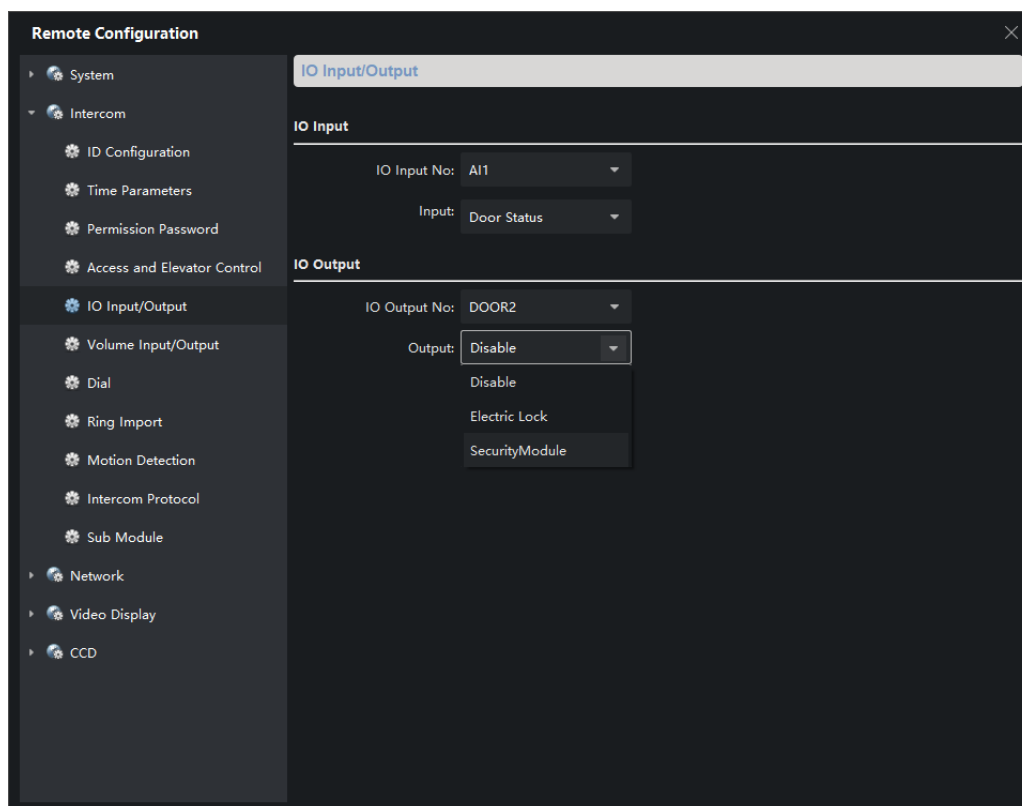
Support models: DS-1101M/K, DS-1102M/K, DS-1103M/K, DS-1104M/K, DS-1107M/K and DS-1108 M/K;

6. Module door station supports security module. Currently module door station only support to connect security module to the second lock;

The security module dip switch is shown in the figure below



Change the IO output to SecurityModule by iVMS-4200



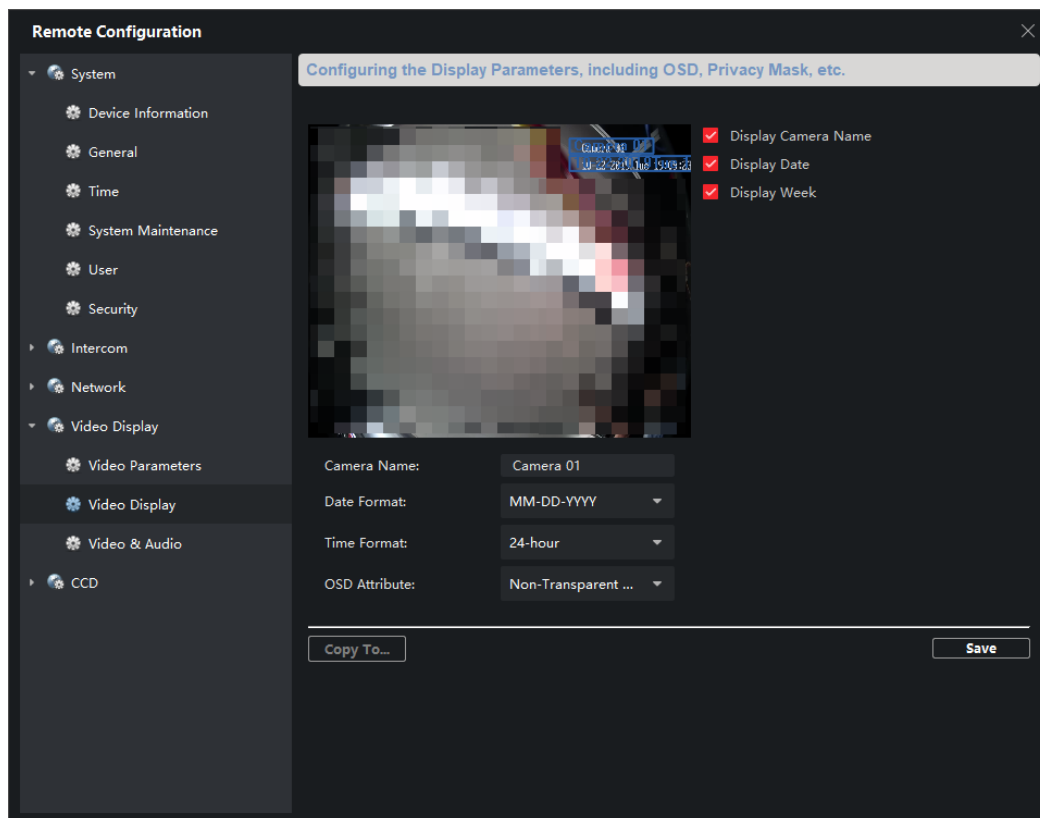
Wire for connecting module door station and card reader, security module

101512130 RS485, PHS4 to 2OPEN, 150mm, yellow/orange

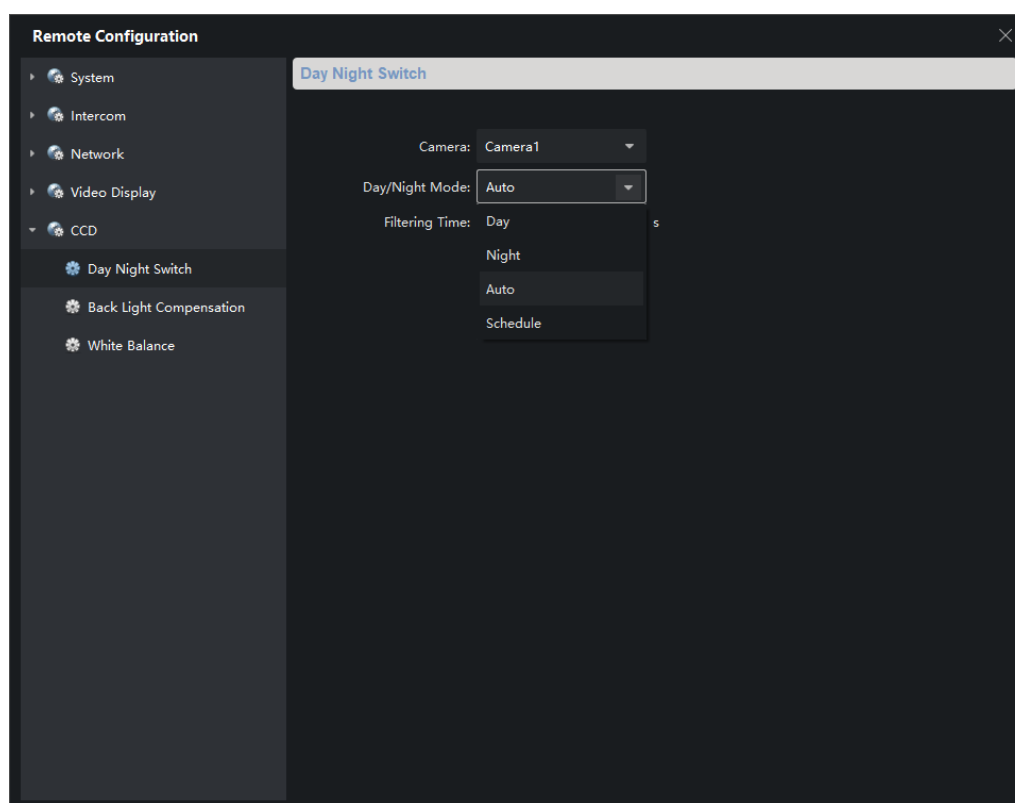
(Wire has been added to the bracket package KD-ACW / KD-ACF)



7. OSD supports name, location and time format configuration;



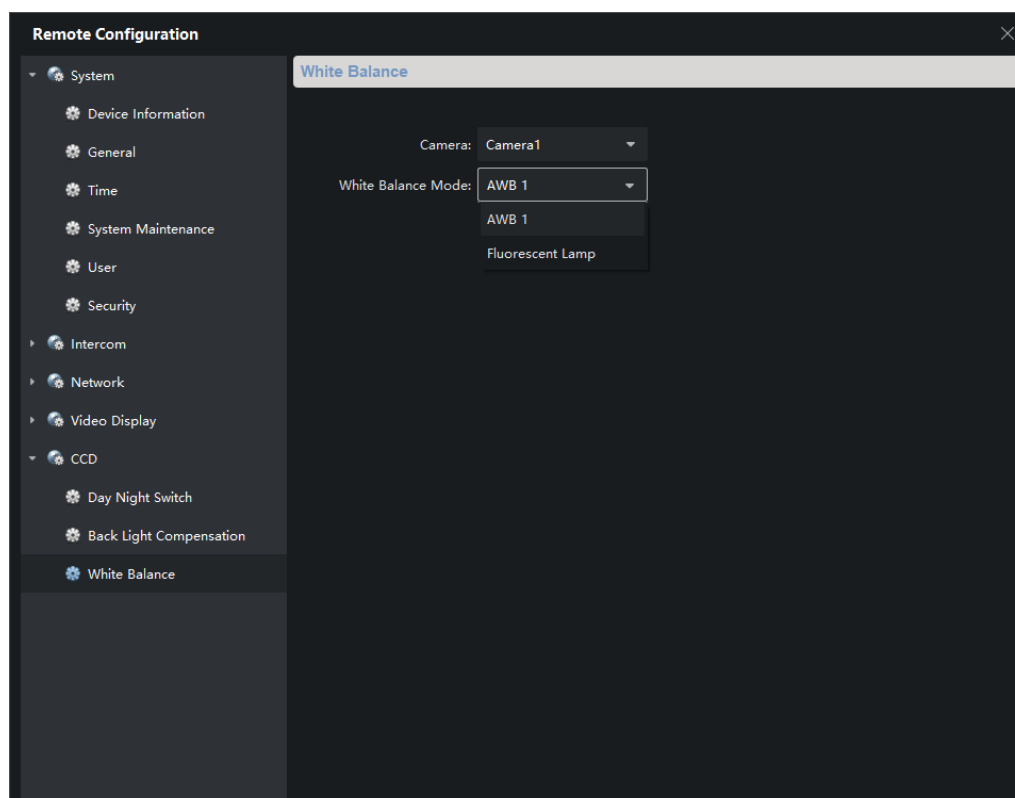
8. Module door station supports day and night switching



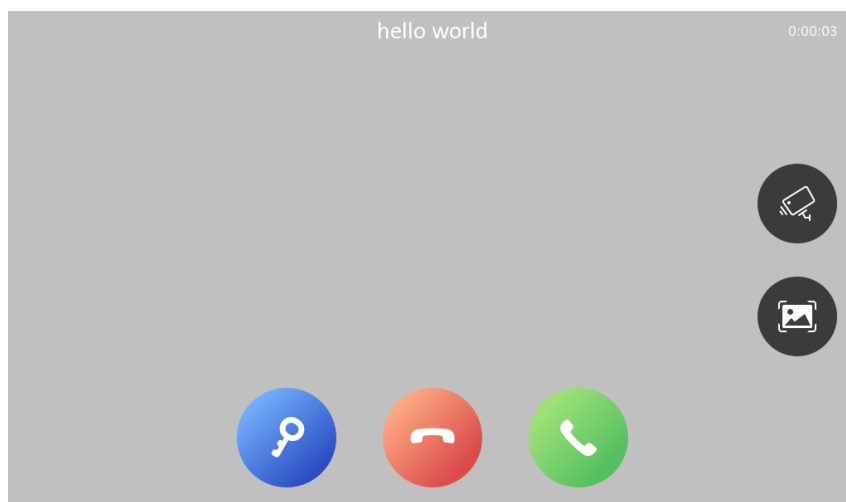
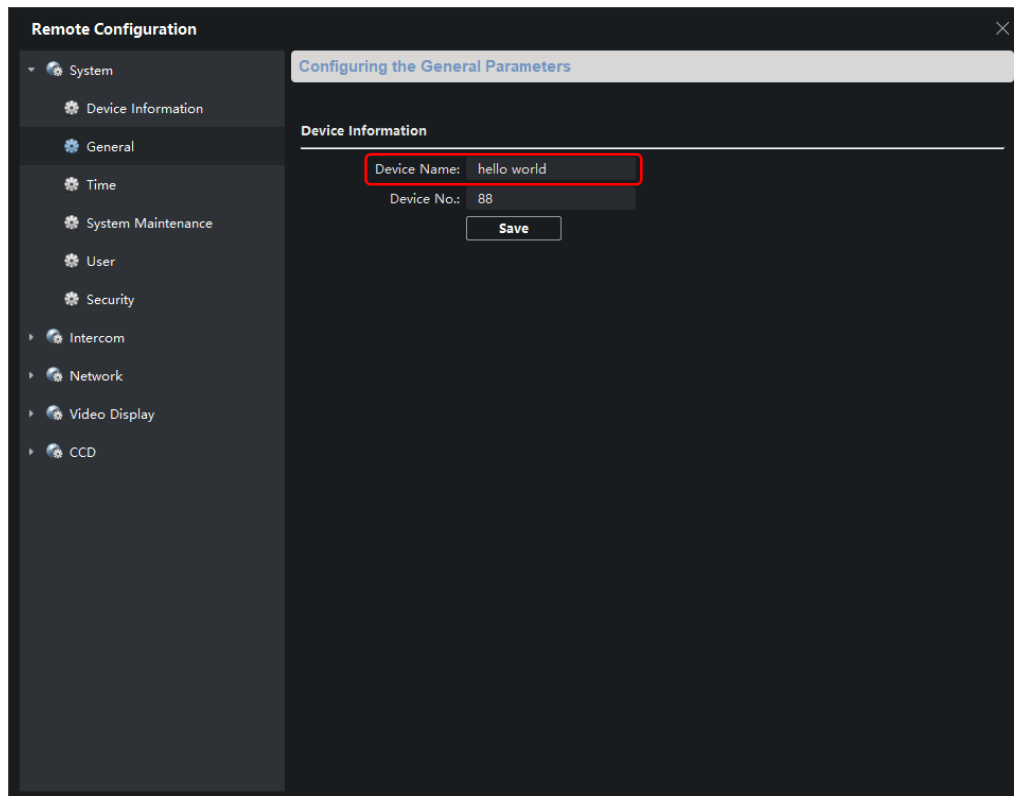
Night mode means infrared mode, each module backlight will be lit

9. Add white balance mode configuration

AWB 1 means auto mode; Fluorescent Lamp is used to solve the purple problem caused by the background being mostly green.

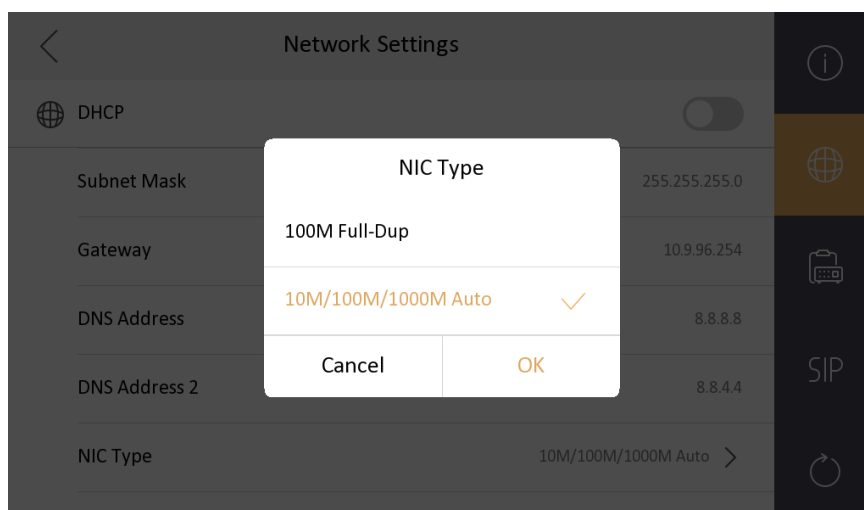
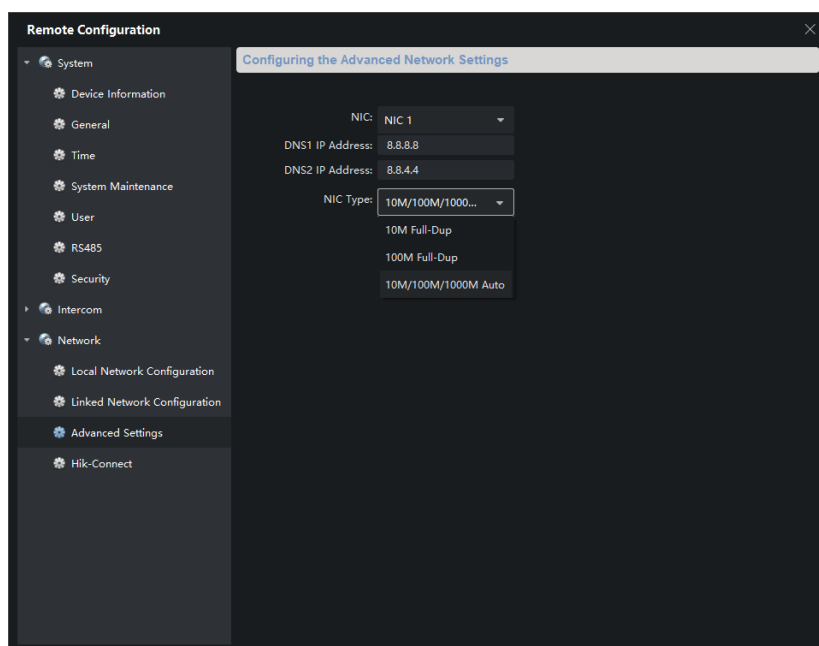


10. Added the function to customize the name of the door station to display when calling the indoor station



2-Wire device

1. Add 10M, 100M or AUTO communication in the indoor station network configuration interface or iVMS-4200 client configuration interface. It is used when the distance between two-wire devices is too long, resulting in slow adaptation.



Function optimization

1. The indoor station wizard selects the first door station by default. If the door station is in inactive state, and directly clicks Finish, and the door station will be directly activated by using the indoor station password;
2. The default value of the indoor station DNS address is corrected to DNS1: 8.8.8.8 DNS2: 8.8.4.4;
3. The indoor station local admin password is changed to the activation password, which is no longer the default 888999. The arming and disarming password cancels the default value. When there is no password, the iVMS-4200 and the local need to configure the new password. (Note: if the indoor station device already activated, after upgrading the firmware, the admin password is still 888999; it need to restore factory settings to take effect).
4. Arabic and English in voice announcements switch to male voice.

Customer Impact and Recommended Action

This new firmware upgrade is to improve product performance, and will take effect automatically after upgrading from previous versions. We'd like to inform you the above changes. Also, we are sorry for any possible inconvenience of use-habit changes caused by this action.

For questions or concerns, please contact our local technical support team.

Note:

- Hikvision has all rights to alter, modify and cancel this notice.
- Hikvision doesn't give any guarantee for old models' stock.
- Hikvision is not liable for any typing or printing errors.
- For special model's change details, please contact our local technical support team.

Hikvision Digital Technology CO., Ltd.
No. 555 Qianmo Road, Binjiang District, Hangzhou 310052,
China
Tel: +86-571-8807-5998
FAX: +86-571-8993-5635
Email: support@hikvision.com