

## Face Door Station V2.0.2 Build191127

### Release Note (2019-12-11)

Device Model: DS-KD9613-E6 DS-KD9613-FE6	Firmware Version	V2.0.2_build191127
	iVMS4200 Version	3.1.0.5_build191122
	Batch tools	1.0.1.8buid20190114

#### Device appearance display



DS-KD9613-E6



DS-KD9613-FE6

Necessary installation accessories:



DS-KABD9613-G

#### New Features

1. Capacity:

Person: 10000

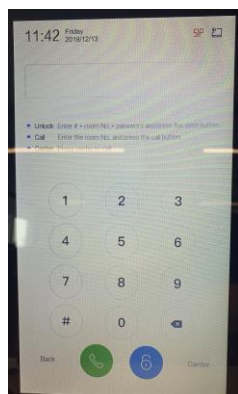
Card: 50000

Fingerprint: 5000

Face: 5000

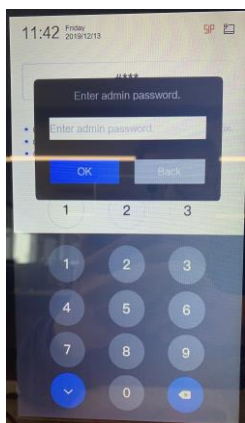
2. The device can perform user management locally or remotely through the client. But after using remote management, local management will be closed.

\*How to enter local management interface



Enter Call interface, then enter '#777';

It will inform entering engineering mode



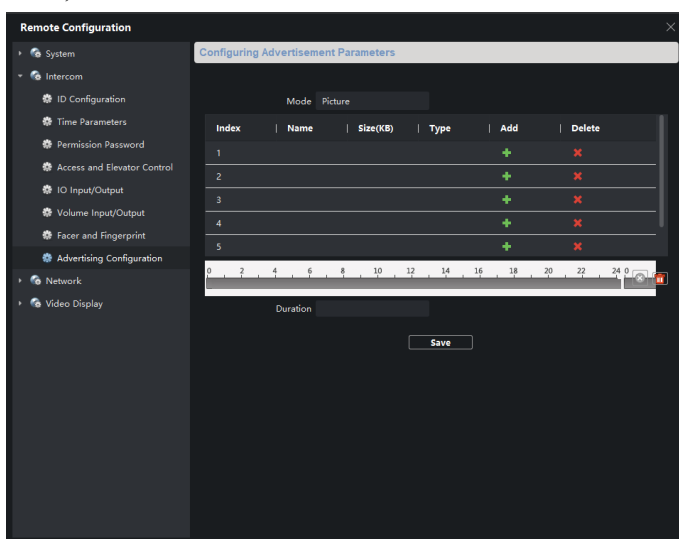
The default admin password is '888999'



Support local interface to configure network, network, door open password, face recognition parameter settings, sound settings, and view device version.

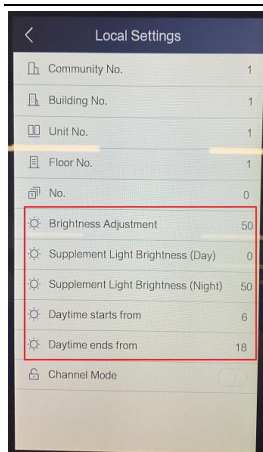
3. Support image ads;

- 1) The device supports image ads and set the playback schedules;
- 2) Supports up to 5 advertisements, the picture format is jpeg, and the size does not exceed 1MB / sheet;



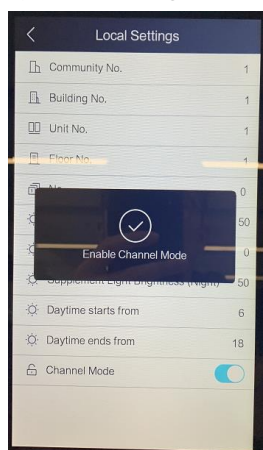
4. Support screen brightness adjustable;

- 1) Support UI local configuration; brightness 1-100;



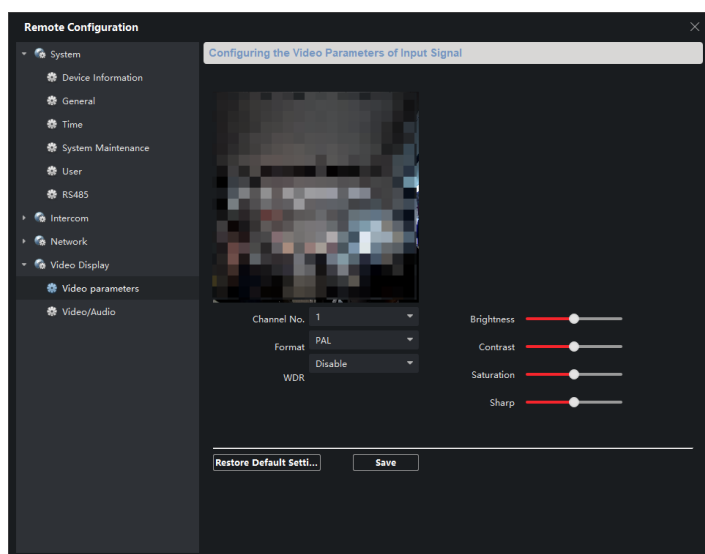
## 5. Support channel mode;

- 1) After being configured in the channel mode, doors controlled by face door station will change to normally open mode;
- 2) Local configuration via UI or remote configuration via 4200;



## 6. Support supplement light control;

- 1) Configurable brightness of white light supplement light;
- 2) Different brightness levels can be configured according to the day and night scheduling;





---

### **Customer Impact and Recommended Action**

This new firmware upgrade is to improve product performance, and will take effect automatically after upgrading from previous versions. We'd like to inform you the above changes. Also, we are sorry for any possible inconvenience of use-habit changes caused by this action.

For questions or concerns, please contact our local technical support team.

Note:

- Hikvision has all rights to alter, modify and cancel this notice.
- Hikvision doesn't give any guarantee for old models' stock.
- Hikvision is not liable for any typing or printing errors.
- For special model's change details, please contact our local technical support team.

Hikvision Digital Technology CO., Ltd.  
No. 555 Qianmo Road, Binjiang District, Hangzhou 310052,  
China  
Tel: +86-571-8807-5998  
FAX: +86-571-8993-5635  
Email: support@hikvision.com