

Serial Keyboard 1200KI&1006KI

Version:V1.2.1

Release Notes

(2019-08-09)

Firmware Basic Information	Firmware Version: V1.2.1
---------------------------------------	--------------------------

Reason of Upgrade

Based on the old version to make up for the original defects, the system runs more stable

New features

1. 【Device UI & Web Service】

Fix system defects and focus on import and export of channel list.

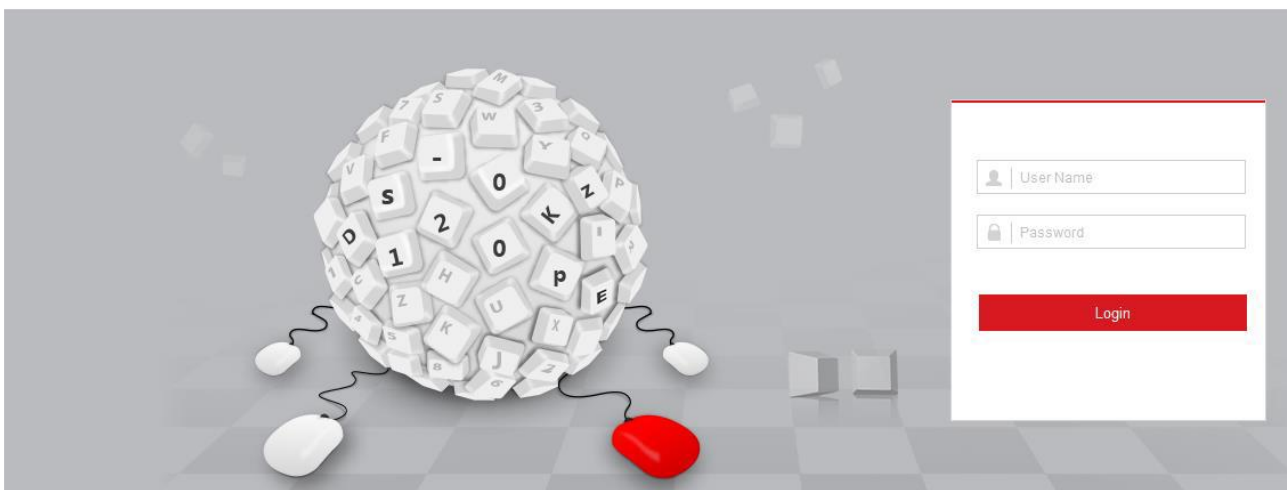
2. 【Other functions on the device end】

pay close attention to SADP device additions.

3. 【Web side】

Focus on interface display and basic functionality

Network Keyboard



4. 【Device Mangement】

In Keyboard Operation mode, follow instructions in this section to add devices first before realizing the operation and control of the devices on the keyboard.

IPC/IP Dome DVR/NVR Decoder

<input type="checkbox"/>	Device Model	IP Address	Port No.	Manufacturer
Total 0 Items << < 0/0 > >>				

5. 【Manage Input/Output Channels】

manage the import and export of input channels in batch, input group and output channels via Web browser

Input List Input Group

Import Export

Edit

ID	Camera Name	Chan No.	Device Model	IP Address	Port No.	Stream Type	transProtocol
1	Slot 02 Camera 01	1	DS-6508HW-B20B	10.65.64.152	20900	Main Stream	TCP
2	Slot 02 Camera 02	2	DS-6508HW-B20B	10.65.64.152	20900	Main Stream	TCP
3	Slot 02 Camera 03	3	DS-6508HW-B20B	10.65.64.152	20900	Main Stream	TCP
4	Slot 02 Camera 04	4	DS-6508HW-B20B	10.65.64.152	20900	Main Stream	TCP
5	Slot 02 Camera 05	5	DS-6508HW-B20B	10.65.64.152	20900	Main Stream	TCP
6	Slot 02 Camera 06	6	DS-6508HW-B20B	10.65.64.152	20900	Main Stream	TCP
7	Slot 02 Camera 07	7	DS-6508HW-B20B	10.65.64.152	20900	Main Stream	TCP
8	Slot 02 Camera 08	8	DS-6508HW-B20B	10.65.64.152	20900	Main Stream	TCP
9	Slot 02 Camera 09	1	DS-6508HW-B20B	10.65.64.152	21600	Main Stream	TCP
10	Slot 02 Camera 10	2	DS-6508HW-B20B	10.65.64.152	21600	Main Stream	TCP
11	Slot 02 Camera 11	3	DS-6508HW-B20B	10.65.64.152	21600	Main Stream	TCP
12	Slot 02 Camera 12	4	DS-6508HW-B20B	10.65.64.152	21600	Main Stream	TCP

Total 157 Items << < 1/14 > >>

6. 【User and User-related Device Management】

The default user account of the device is admin (administrator), and the password is set when you start the device for the first time. The admin user account has the permission to add and delete operator accounts and configure user parameters, and add the related devices for the added users.

Add User

User Name: ✓

User Type:

Password: ✓
Strong
8 characters allowed, and you can use a combination of numbers, lowercase and uppercase letters for your password with at least two kinds of them contained.

Confirm Password: ✓

Select Linked Device						Select All
<input checked="" type="checkbox"/>	ID	Device Type	IP Address	Port No.	Device Model	
<input checked="" type="checkbox"/>	1	IPC/IP Dome	10.16.6.126	8000	IPDOME_MEGA200	
<input checked="" type="checkbox"/>	2	DVR/NVR	10.16.5.17	8000	DS-9016HUHI-F8/N	
<input checked="" type="checkbox"/>	3	Decoder	10.12.1.249	8000	DS-6408HD-T	

Selected 3 Total 3 Items << < 1/1 > >>

OK Cancel

Customer Impact and Recommended Action

This new firmware upgrade is to improve product performance, and will take effect automatically after upgrading from previous versions. We'd like to inform you the above changes. Also, we are sorry for any possible inconvenience of use-habit changes caused by this action.

For questions or concerns, please contact our local technical support team.

Note:

- Hikvision has all rights to alter, modify and cancel this notice.
- Hikvision doesn't give any guarantee for old models' stock.
- Hikvision is not liable for any typing or printing errors.
- For special model's change details, please contact our local technical support team.