

# Hikvision Temperature Screening Solution

Flexible Product Choice for a Multitude of Scenarios

Hikvision Temperature Screening Solution, with multiple product types and wide range of applications, is designed for the detection of skin-surface temperatures so as to achieve rapid and safe preliminary screening in public areas with high efficiency in a multitude of scenarios.

Thermographic  
Cameras

MinMoe Terminals

Metal Detector Door

DeepinMind NVRs



## Pain Points of Conventional Methods



Conventional methods – such as using an ear thermometer or mercury thermometer – have obvious deficiencies in detecting people with abnormal temperature in public places:

### Close Contact, High Risk

Close contact among the users leads to potential risks.

### High Cost, Low Efficiency

Increased manpower required, but 1-by-1 inspection is inefficient.

### Lack of Intelligent Analysis

Manual registration is required, which may lead to human error and not so timely feedback.

## We Offer a Better Approach



An approach that incorporates competent technologies, instead of manpower alone, can be a much better choice in many ways. Such an approach is:



### Safer

Non-contact measurement to avoid physical contact



### Faster

One second per person for skin-surface temperature detection



### Smarter

AI detection, greatly reducing false alarms

## Advantages of Thermal Technology

- AI technology ensures thermographic cameras only detect human skin-surface temperature to reduce false alarms of other heat sources.
- Compensation algorithm ensures the temperature is compensated with ambient temperature and the distance of the measured target for better accuracy.
- Thermal technology has been applied widely in temperature screening scenarios as it offers more flexibility and efficiency in preliminary screening of elevated skin-surface temperatures.



## Workflow

Entering detection area

1

Human skin-surface temperature measurement  
Fast preliminary temperature screening without contact



Locating potential abnormal temperatures

3

Second check with mercury or ear thermometers

4

# Solution Overview

## OPERATION TIPS

- Install the devices in a windless indoor environment
- Set up a specific temperature measurement zone
- Double-check with a thermometer upon detection of elevated skin-surface temperatures

## Temperature Screening with Fast Deployment

### Thermographic Cameras

Visualized bi-spectrum live view



#### Thermographic Bullet/Turret Camera

Flexible product choice for temperature screening of building entrances, elevator halls, airport security checks, etc.

### Wireless Devices

Easy connection, cable free



#### Thermographic Handheld Camera

### Metal Detector Doors

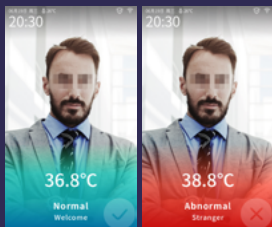
Real-time sound and light alarm



#### Metal Detector Door

## Temperature Screening with Access Control

Touch-Free, Access is Easier but Safer



### Door Control

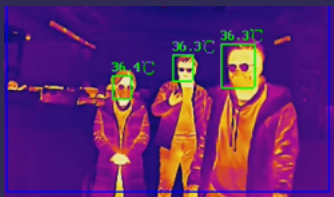
Wall-mounted to control the door



Touch-free access control with temperature measurement

## Group Temperature Screening

Group Screening with High Efficiency



#### Thermographic Bullet Camera

Supports simultaneous temperature screening of multiple people, greatly enhancing efficiency

## Temperature Screening on Patrol

Anytime, Anywhere, Just One Click



#### Thermographic Handheld Camera

Supports preliminary on-spot temperature screening without disturbing a person

## Temperature Screening & Mask Detection

Intuitive Demonstration



#### Thermographic Camera & DeepinMind NVR

The special interface of DeepinMind NVR visually displaying temperature and mask status

# Product Showcase

## Thermographic Cameras

### Thermographic Bullet Camera

DS-2TD2617B-3/6PA



- Thermal resolution: 160 × 120
- Thermal lens: 3 mm / 6 mm
- Optical: 2688 × 1520
- Optical lens: 4 mm / 8 mm
- Bi-spectrum image fusion
- Accuracy: ±0.5°C (±0.3°C with blackbody)
- Measurement range: 30-45°C
- Supports audio alarms
- Working temperature: 10-35°C
- AI human detection, false alarms reduction
- Simultaneous temperature screening for multiple people

### Thermographic Turret Camera

DS-2TD1217B-3/6PA



- Thermal resolution: 160 × 120
- Thermal lens: 3 mm / 6 mm
- Optical: 2688 × 1520
- Optical lens: 4 mm / 8 mm
- Bi-spectrum image fusion
- Accuracy: ±0.5°C (±0.3°C with blackbody)
- Measurement range: 30-45°C
- Supports audio alarms
- Working temperature: 10-35°C
- AI human detection, false alarms reduction
- Simultaneous temperature screening for multiple people

### Thermographic Bullet Camera

DS-2TD2636B-15/P

DS-2TD2636B-13/P

DS-2TD2637B-10/P



- Thermal resolution: 384 × 288
- Thermal lens: 15 mm / 13 mm / 10 mm
- Optical: 2688 × 1520
- Optical lens: 6 mm / 6 mm / 4 mm
- Accuracy: ±0.5°C (±0.3°C with blackbody)
- Measurement range: 30-45°C
- Working temperature: 10-35°C
- AI human detection, false alarms reduction
- Simultaneous temperature screening for multiple people

### Thermographic Handheld Camera

DS-2TP21B-6AVF/W



- Thermal resolution: 160 × 120
- Optical resolution: 640 × 480
- Measurement range: 30-45°C
- Touch screen
- Accuracy: ±0.5°C
- Bi-spectrum image fusion
- Supports Wi-Fi
- Supports audio alarms
- Automatic screenshots & uploading

### Blackbody Calibrator

DS-2TE127-G4A



- Temperature resolution: 0.1°C
- Accuracy: ±0.1°C
- Temperature stability: ±0.1°C/h
- Effective emissivity: 0.97±0.02
- Operating temperature: 0-30°C

\*Hikvision's Temperature Screening Thermographic Cameras are designed for the detection of skin-surface temperatures so as to achieve rapid preliminary screening in public areas. Actual core body temperatures should be further confirmed using clinical measurement devices. Under any circumstances, it is highly recommended to use Hikvision's Thermographic Cameras in accordance with local laws and regulations.

## MinMoe Terminal

### MinMoe Wall-Mounting Touch-free Temperature Screening Terminal

DS-K1T671TM-3XF



- LCD touch screen
- Thermographic technology, temperature range: 30-45°C, accuracy: ±0.5°C
- Temperature screening of forehead
- Authentication distance: 0.5 m – 1.5 m, height: 1.2 m – 1.9 m
- Temperature screening with visional results and audio prompt

## Monitoring Tablet

DS-KC001



- 7" Touch-Screen Android Tablet
- Display resolution: 1024 × 600
- Wi-Fi 802.11b/g/n
- Remote temperature screening & records checking, real-time preview
- Centralized data management, max to 100,000 records
- Abnormal temperature alarm
- Remote access control & video intercom

## Metal Detector Door

ISD-SMG318LT-F



- 18 independent detection zones
- 7-inch LCD touch screen
- Thermal resolution: 160 × 120
- Temperature measurement accuracy: ±0.5°C
- Temperature measurement range: 30-45°C
- Bi-spectrum image fusion
- In accordance with the international safety standard, friendly to pregnant woman, people with cardiac pacemaker, etc.

## DeepinMind NVRs

iDS-7716((32)NXI-I4((16P)/X(B)(T)



iDS-9616((32)NXI-I8/X(B)(T)



- Up to 16 channels of face picture comparison
- 32-library capacity with up to 100,000 face pictures in total

## PoE Switches

DS-3E0105P-E(B)



DS-3E0109P-E(C)



- L2, Unmanaged, 10/100M RJ45 PoE ports, 1 10/100M RJ45 uplink port, 802.3af/at, PoE power budget. 300 m long distance transmission, 6 KV surge protection

## Monitors



DS-D5024FN  
(23.8")

DS-D5032QE  
(31.5")

DS-D5043QE  
(43")



DS-D5024FC  
(23.8")

DS-5032FC-A  
(31.5")

DS-D5043UC  
(43")

- 1080p, HDMI/VGA input, view angle: 178°/178°, plastic casing, VESA, base bracket included, 24/7 operation

- 1080p, HDMI/VGA input, with built-in speaker, plastic casing, VESA, base bracket included, 24/7 operation

## HikCentral Professional



- Flexible, scalable, reliable and powerful central surveillance system
- Supports live view, play back, access control, alarm management, personnel identification, temperature data storage, abnormal temperature trend analysis, etc.
- The customized HikCentral Professional version supports thermographic products, DeepinMind NVRs and face recognition terminals