



**HIKVISION®**

**REDUCING RISKS AND  
INCREASING EFFICIENCY  
WITH EASE  
LOGISTICS PARK SOLUTION**





## What is a Logistics Park and What Concerns Need to be Addressed?

*A Logistics Park is an area zoned and planned for the purpose of transporting goods. We usually see two types of warehouses: a fulfillment center, for shipping and receiving goods, and a dispatch center, where cargo is shipped and vehicles are sent off to their various destinations.*

Loss prevention and efficient operations are the two main concerns at any logistics parks. How can managers react quickly when there is a missing or damaged package? Is there a way to trace each step in the process and pinpoint where the problem took place? And of course, is there a tool to digitize and more efficiently manage the docks for loading and unloading?



## The Hikvision Logistics Solution

Hikvision answers each of these concerns by offering an all-encompassing solution that focuses on four critical components. This solution not only improves safety with its top-notch security solution, but also helps improve operational efficiency through adapting Artificial Intelligence-powered functionality. All together, Hikvision's solution aims to build a more secured and more intelligent logistics park.

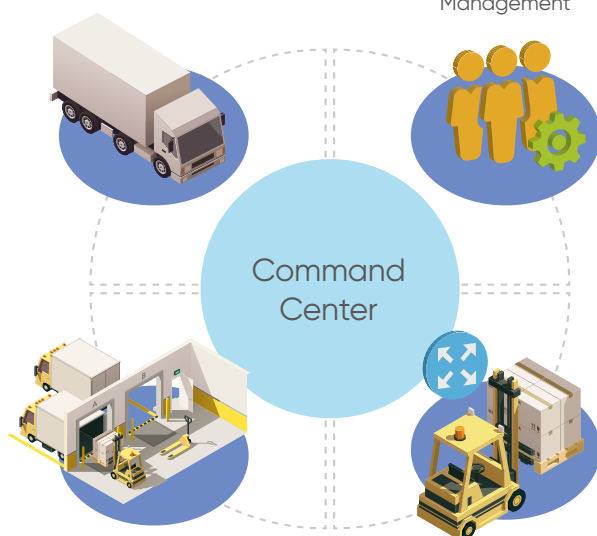
Vehicle Management

Personnel Management

Command Center

Site Management

Goods Management



# Personnel Management

Protect Visitors and Staff While Preventing Property Loss



**4 MP DeepinView  
Bullet Camera**

iDS-2CD7A46G0-IZHS

Protective helmet



Eye wear



VIS clothes



Protective boots



Dust mask



Ear plugs



Safety gloves



## Helmet Detection

PPE stands for Personal Protective Equipment – protective-wear that ensures worker safety. Hikvision now offers intelligently detection of helmets or other PPE.

For example, the embedded helmet detection can notify relevant personnel if a worker is found not wearing one where required. This helps to improve the safety level without requiring extra manpower to oversee.

## Access Management for Warehouses



### Entering and Exiting Warehouses During Rush Hours

Workers usually wear gloves and/or carry merchandise, making it difficult to use authentication methods that require physical contact. Additionally, clocking in and out is time-consuming with large numbers of workers. If a card-based authentication is used, there is also the problem of fake attendance records.

Face recognition terminals now make access authentication accurate, efficient, hygienic, and impossible to counterfeit.

**MinMoe  
Face Recognition  
Terminal**  
DS-K1T671TM-3XF



### Quick and Easy Movement Throughout the Warehouse

In the warehouse areas, forklifts and other equipment constantly pass from one zone to another. Face recognition terminals offer a smooth and convenient way to access various areas, for example, through a roller shutter door, without having to have workers get down from the cart.

**DeepinMind NVR**  
iDS-9632NXI-I8  
DS-2CD7546G0-IZ(H)SY



# Vehicle Management

Improve Efficiency for the Loading Process and Standardize Driving Behaviors



**4 MP DeepinView  
Bullet Camera**  
IDS-2CD7A46G0

## Warehouse Dock Management

Many dock platforms face various efficiency challenges, such as how to best arrange the entire workflow from truck entry to cargo pickup, how to allocate resources so that dock platforms are operating efficiently, and more. With Hikvision's digital dock platform, all of these questions are conveniently solved through an automated workflow.

**Queue Check-In**  
Please Select The Following Information

Information

Company Name  
K&L Chemical

Business Operation  
Loading

License Plate  
G0234

Driver's Name  
Chen Housheng

Contact Number  
13900000000

Submit

### Step 1: Registration

Register vehicle information by scanning a QR code and accessing the registration site or at the security booth

Queue Display

AF Company			AF Company			SF Company			CF Company			CF Company			
Number	Vehicle	License plate	Type	Number	Vehicle	License plate	Type	Number	Vehicle	License plate	Type	Number	Vehicle	License plate	Type
01	KS-543 SH	Waiting		02	KS-543 SH	Waiting		03	KS-543 SH	Waiting		04	KS-543 SH	Waiting	
05	KS-543 SH	Waiting		06	KS-543 SH	Waiting		07	KS-543 SH	Waiting		08	KS-543 SH	Waiting	
09	KS-543 SH	Waiting		10	KS-543 SH	Waiting		11	KS-543 SH	Waiting		12	KS-543 SH	Waiting	
13	KS-543 SH	Waiting		14	KS-543 SH	Waiting		15	KS-543 SH	Waiting		16	KS-543 SH	Waiting	
17	KS-543 SH	Waiting		18	KS-543 SH	Waiting		19	KS-543 SH	Waiting		20	KS-543 SH	Waiting	
21	KS-543 SH	Waiting		22	KS-543 SH	Waiting		23	KS-543 SH	Waiting		24	KS-543 SH	Waiting	
25	KS-543 SH	Waiting		26	KS-543 SH	Waiting		27	KS-543 SH	Waiting		28	KS-543 SH	Waiting	
29	KS-543 SH	Waiting		30	KS-543 SH	Waiting		31	KS-543 SH	Waiting		32	KS-543 SH	Waiting	
33	KS-543 SH	Waiting		34	KS-543 SH	Waiting		35	KS-543 SH	Waiting		36	KS-543 SH	Waiting	
37	KS-543 SH	Waiting		38	KS-543 SH	Waiting		39	KS-543 SH	Waiting		40	KS-543 SH	Waiting	
41	KS-543 SH	Waiting		42	KS-543 SH	Waiting		43	KS-543 SH	Waiting		44	KS-543 SH	Waiting	
45	KS-543 SH	Waiting		46	KS-543 SH	Waiting		47	KS-543 SH	Waiting		48	KS-543 SH	Waiting	
49	KS-543 SH	Waiting		50	KS-543 SH	Waiting		51	KS-543 SH	Waiting		52	KS-543 SH	Waiting	
53	KS-543 SH	Waiting		54	KS-543 SH	Waiting		55	KS-543 SH	Waiting		56	KS-543 SH	Waiting	
57	KS-543 SH	Waiting		58	KS-543 SH	Waiting		59	KS-543 SH	Waiting		60	KS-543 SH	Waiting	
61	KS-543 SH	Waiting		62	KS-543 SH	Waiting		63	KS-543 SH	Waiting		64	KS-543 SH	Waiting	
65	KS-543 SH	Waiting		66	KS-543 SH	Waiting		67	KS-543 SH	Waiting		68	KS-543 SH	Waiting	
69	KS-543 SH	Waiting		70	KS-543 SH	Waiting		71	KS-543 SH	Waiting		72	KS-543 SH	Waiting	
73	KS-543 SH	Waiting		74	KS-543 SH	Waiting		75	KS-543 SH	Waiting		76	KS-543 SH	Waiting	
77	KS-543 SH	Waiting		78	KS-543 SH	Waiting		79	KS-543 SH	Waiting		80	KS-543 SH	Waiting	
81	KS-543 SH	Waiting		82	KS-543 SH	Waiting		83	KS-543 SH	Waiting		84	KS-543 SH	Waiting	
85	KS-543 SH	Waiting		86	KS-543 SH	Waiting		87	KS-543 SH	Waiting		88	KS-543 SH	Waiting	
89	KS-543 SH	Waiting		90	KS-543 SH	Waiting		91	KS-543 SH	Waiting		92	KS-543 SH	Waiting	
93	KS-543 SH	Waiting		94	KS-543 SH	Waiting		95	KS-543 SH	Waiting		96	KS-543 SH	Waiting	
97	KS-543 SH	Waiting		98	KS-543 SH	Waiting		99	KS-543 SH	Waiting		100	KS-543 SH	Waiting	

### Step 2: Queuing

Vehicles inside the park will queue for loading/unloading. The queuing process is displayed on the outdoor LED screen.

**Dispatch**

Vehicle

01 KS-760 SH

02 KS-760 SH

03 KS-760 SH

04 KS-760 SH

05 KS-760 SH

06 KS-760 SH

07 KS-760 SH

08 KS-760 SH

09 KS-760 SH

10 KS-760 SH

11 KS-760 SH

12 KS-760 SH

13 KS-760 SH

14 KS-760 SH

15 KS-760 SH

16 KS-760 SH

17 KS-760 SH

18 KS-760 SH

19 KS-760 SH

20 KS-760 SH

21 KS-760 SH

22 KS-760 SH

23 KS-760 SH

24 KS-760 SH

25 KS-760 SH

26 KS-760 SH

27 KS-760 SH

28 KS-760 SH

29 KS-760 SH

30 KS-760 SH

31 KS-760 SH

32 KS-760 SH

33 KS-760 SH

34 KS-760 SH

35 KS-760 SH

36 KS-760 SH

37 KS-760 SH

38 KS-760 SH

39 KS-760 SH

40 KS-760 SH

41 KS-760 SH

42 KS-760 SH

43 KS-760 SH

44 KS-760 SH

45 KS-760 SH

46 KS-760 SH

47 KS-760 SH

48 KS-760 SH

49 KS-760 SH

50 KS-760 SH

51 KS-760 SH

52 KS-760 SH

53 KS-760 SH

54 KS-760 SH

55 KS-760 SH

56 KS-760 SH

57 KS-760 SH

58 KS-760 SH

59 KS-760 SH

60 KS-760 SH

61 KS-760 SH

62 KS-760 SH

63 KS-760 SH

64 KS-760 SH

65 KS-760 SH

66 KS-760 SH

67 KS-760 SH

68 KS-760 SH

69 KS-760 SH

70 KS-760 SH

71 KS-760 SH

72 KS-760 SH

73 KS-760 SH

74 KS-760 SH

75 KS-760 SH

76 KS-760 SH

77 KS-760 SH

78 KS-760 SH

79 KS-760 SH

80 KS-760 SH

81 KS-760 SH

82 KS-760 SH

83 KS-760 SH

84 KS-760 SH

85 KS-760 SH

86 KS-760 SH

87 KS-760 SH

88 KS-760 SH

89 KS-760 SH

90 KS-760 SH

91 KS-760 SH

92 KS-760 SH

93 KS-760 SH

94 KS-760 SH

95 KS-760 SH

96 KS-760 SH

97 KS-760 SH

98 KS-760 SH

99 KS-760 SH

100 KS-760 SH

OK

### Step 3: Dock Platform Management

A Dock platform camera will detect and recognize each platform's status and record truck information. Staff can then use the app to call the truck to a platform.

## Visual Display of the Platform Status in Real Time

### 1. Platform Status Indicator

Each color represents a platform status. For example, a red icon and license plate will be shown for platforms that are currently busy. If a vehicle parks at the wrong platform, the icon will be yellow; and if the platform is empty, a green indicator will be shown.

### 2. View Operation Status Remotely

Click the platform icon on the canvas to play back videos on that platform

## On-Site Driving Regulations and Management

As most of the daily routines within a logistics park are completed using vehicles, it is important to ensure road safety within the area. The Hikvision Solution offers tools for:

- Vehicle speed control
- Illegal parking

**4 MP DarkFighter Traffic Network Speed Dome**  
iDS-2VS435-F836



**Check Point Camera / Radar**  
iDS-TCV900  
DS-TD10N-1



## Entrance & Exit Control

Hikvision offers convenient and efficient entrance & exit control for industrial parks and fulfillment centers with or without a security booth at the gate.

Pre-registered vehicles can pass efficiently via automatic license plate recognition. Visitor vehicles can also conveniently log in at a security booth or remotely using a video intercom device.



**4 MP ANPR Bullet Camera**  
iDS-TCM403-A

### Registered Vehicles

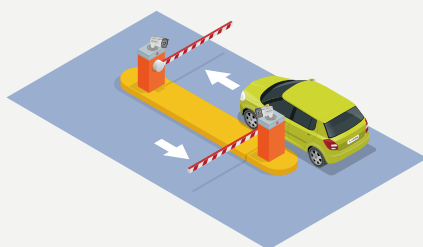


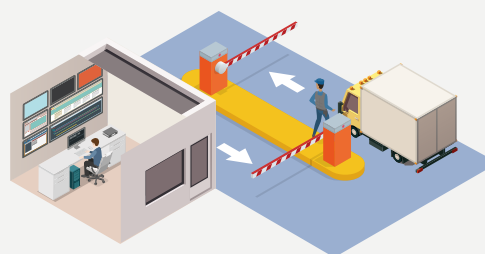
Plate recognition  
(ANPR Solution)

Auto-open barrier

Plate recognition

Open barrier

### Visiting Vehicles



Security guards check  
in the control room

Registers in the  
toll manually

Records the  
vehicle information

Auto-open barrier

Plate recognition

Open barrier



# Site Management

Reliably Record and Safely Store All Operations



**Thermal Network  
Bullet Camera**  
DS-2TD2137-25V1

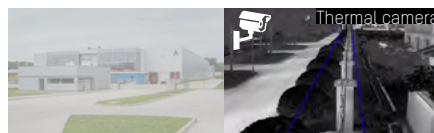
## Perimeter Protection

When dealing with large areas that suffer from low illumination, using a thermal camera can provide clear video – even in zero-light environments.

For areas that require higher-level security protection, the combination of radar and dome camera brings both accurate radar and clear visuals together. The link between the two – radar accuracy and dome camera clarity – allows you to easily track any suspicious movements.

### Scenario 1

Low light and long distance



### Scenario 2

Areas with high security requirements



## Intelligent and Efficient Security Patrol

### On-site Patrols

Phase 1

The traditional on-site patrol methods suffer from several downsides:

- More manpower required
- Low efficiency as all the sites are checked manually
- Potentially dangerous for security to patrol areas with hazardous materials

### Remote Patrols

Phase 2

Remote patrols are safer and more efficient. Security or other managers can visually check all sites using high-definition cameras based on patrol schedules. Users can also enjoy the benefit of remote patrols with their existing security system.

If an event is captured during a patrol, security guard receives notification and makes needed improvements.

Product line



Fire Exit



Storage Area



Inside of Lab



Vehicle Orbit



Vehicle Speed



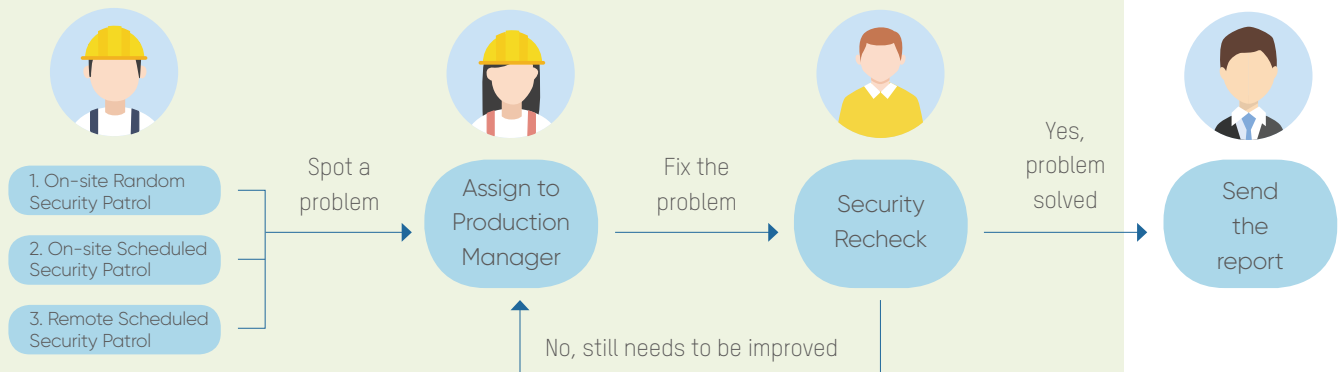
Blacklist Vehicles



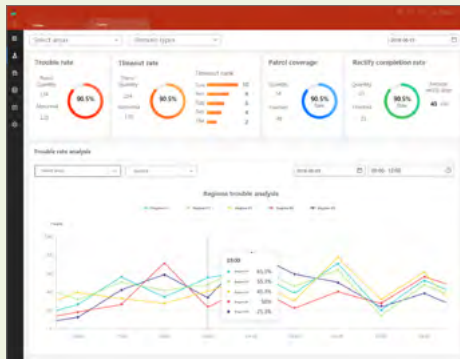
Illegal Parking



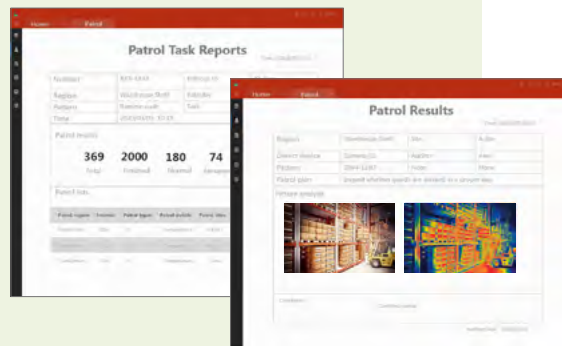
## Workflow for the patrol and improvement process



## Reports for security manager and production manager



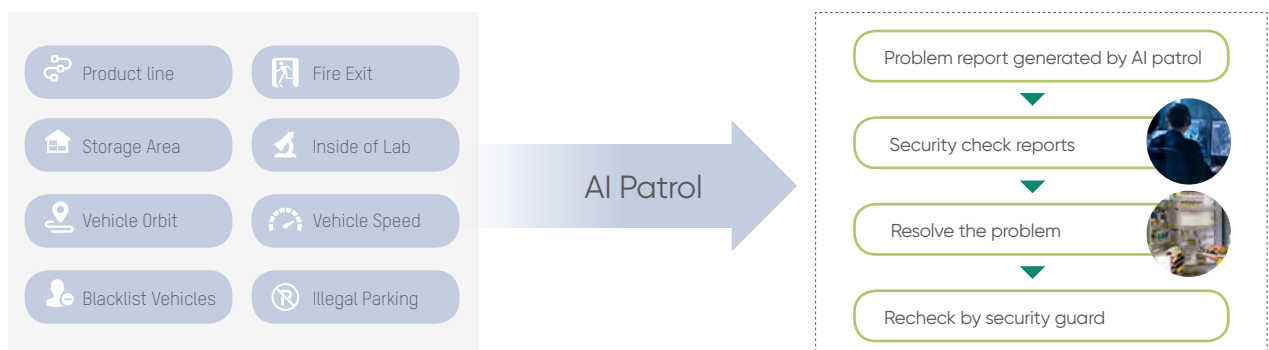
Comprehensive reports include all patrol tasks and process for security manager.



Reports detail each task for the production manager, who is responsible for resolving problems.

## Phase 3 AI Patrols

Artificial Intelligence Patrols add intelligence on top of remote methods – now security staff and managers do not have to manually check all video footage. The AI patrol will identify a problem when a captured image triggers pre-set rules. In the past, a security guard had to check images for all patrol locations. However, with AI patrol, only those that have an issue will be sent to security, vastly reducing labor cost. Security can then resolve that specific problem. AI patrols reduce manpower and offer a more intelligent way to quickly respond to any problem.



# Goods Management

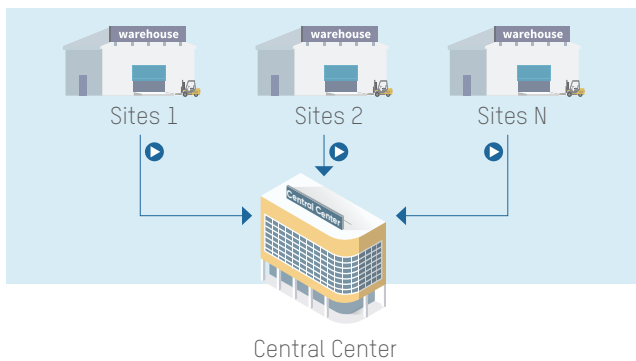
Quickly Locate any Problem with this Visualized, Trackable Process

## Visualized Parcel Tracking

### 01 Scenario Merchandise Flow Across Multiple Sites

#### Requirements

In e-commerce businesses, for example, warehouse service providers often struggle to quickly clarify who is responsible for loss or damage and can be charged enormous penalties.



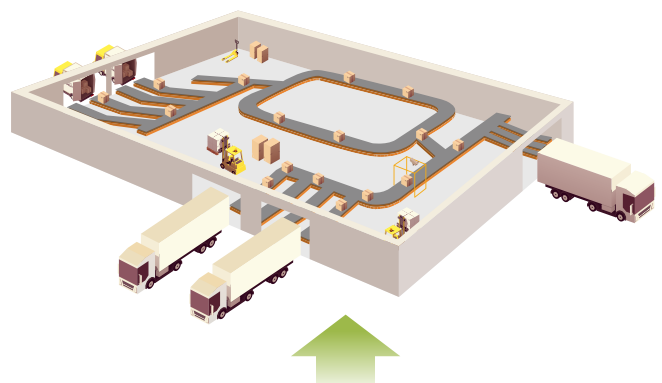
### 02 Scenario Goods Flow in one Warehouse

#### Requirements

With expensive or fragile merchandise, warehouse owners need to clarify responsible parties and procedures in each part of the process.




### Warehouse Type A | Fulfillment Center Key Feature: Flexible Deployment



### Warehouse Type B | Dispatch Center Key Feature: With Conveyor Belt, High Speed Processing





1

Step

Enter Parcel ID

2

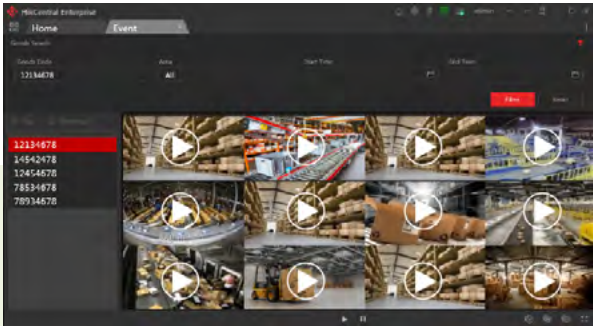
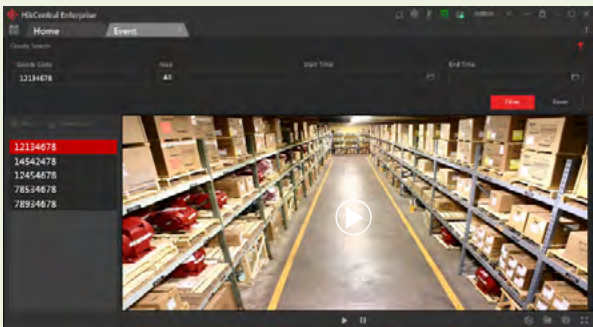
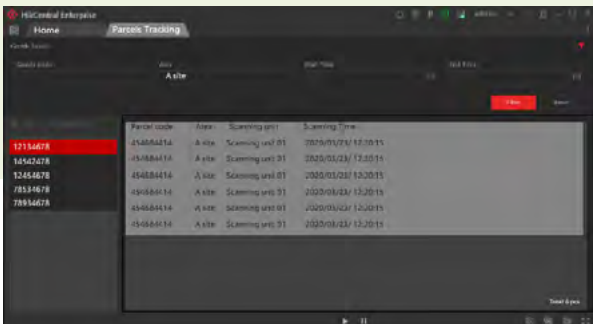
Step

Search & Download Video

3

Step

Report for Daily Inventory

## Warehouse Fire Prevention

Flammable materials threaten warehouses and the often large amount of stored goods. In the past, security teams only received reminders after a fire. But by then, immense losses have already occurred.

With thermal cameras and smoke detectors, Hikvision offers a preemptive solution that helps to identify potential risks before disaster, making fire prevention smarter and more effective.



# Command Center

## Intuitive and Comprehensive Dashboard

With the 3D image of your logistics park at the center of the dashboard, you will see all operational data and activity in one place. Whether you're looking for statistics on operations, security, or employee performance, this dashboard has it all!



## AR Command Center

This AR command center is an efficient tool for you to quickly access real-time video feed for different areas – simply click on the tag to switch view window.



**24 MP 270° Panoramic and PTZ Camera**  
DS-2DP2427ZIXS-DE/440/T2



## HIKVISION®

### Headquarters

No.555 Qianmo Road, Binjiang District,  
Hangzhou 310051, China  
T +86-571-8807-5998  
overseasbusiness@hikvision.com

**Hikvision USA**  
T +1-909-895-0400  
sales.usa@hikvision.com

**Hikvision Europe**  
T +31-23-5542770  
sales.eu@hikvision.com

**Hikvision UK & Ireland**  
T +01628-902140  
sales.uk@hikvision.com

**Hikvision UAE**  
T +971-4-4432090  
salesme@hikvision.com

**Hikvision Russia**  
T +7-495-669-67-99  
saleru@hikvision.com

**Hikvision Australia**  
T +61-2-8599-4233  
salesau@hikvision.com

**Hikvision Italy**  
T +39-0438-6902  
info.it@hikvision.com

**Hikvision South Africa**  
Tel: +27 (10) 0351172  
sale.africa@hikvision.com

**Hikvision Singapore**  
T +65-6684-4718  
sg@hikvision.com

**Hikvision Korea**  
T +82-(0)31-731-8817  
sales.korea@hikvision.com

**Hikvision India**  
T +91-22-28469900  
sales@pramahikvision.com

**Hikvision Brazil**  
T +55 11 3318-0050  
Latam.support@hikvision.com

**Hikvision France**  
T +33(0)1-85-330-450  
info.fr@hikvision.com

**Hikvision Spain**  
T +34-91-737-16-55  
info.es@hikvision.com

**Hikvision Poland**  
T +48-22-460-01-50  
info.pl@hikvision.com

**Hikvision Canada**  
T +1-866-200-6690  
sales.canada@hikvision.com

**Hikvision Turkey**  
T +90 (216)521 7070- 7074  
sales.tr@hikvision.com

**Hikvision Kazakhstan**  
T +7-727-9730667  
nikia.panfilov@hikvision.ru

**Hikvision Tashkent**  
T +99-87-1238-9438  
uzb@hikvision.ru

**Hikvision Indonesia**  
T +62-21-2933759  
Sales.Indonesia@hikvision.com

**Hikvision Thailand**  
T +662-275-9949  
sales.thailand@hikvision.com

**Hikvision Malaysia**  
T +601-7652-2413  
sales.my@hikvision.com

**Hikvision Vietnam**  
T +84-974270888  
sales.vt@hikvision.com

**Hikvision Hong Kong**  
T +852-2151-1761  
info.hk@hikvision.com

**Hikvision Colombia**  
sales.colombia@hikvision.com

**Hikvision Romania**  
marketing.ro@hikvision.com



# REDUCING RISKS AND INCREASING EFFICIENCY WITH EASE LOGISTICS PARK SOLUTION

**HIKVISION**

Follow us on social media to get the latest product and solution information



HikvisionHQ



Hikvision



HikvisionHQ



Hikvision\_Global



hikvisionhq



Hikvision Corporate Channel

