

Combining Great Technologies for Great Image Quality and Usability

Advanced Hardware

F1.0 super large aperture
1/1.2" advanced sensor

Reliable Quality

Active alignment technology
guarantees the focusing performance
in the mass production of ultra high
definition ColorVu products, realizing
excellent quality control.



Frontier Technology

3D color technology realizes precise color
rendition to produce vivid colorful images.

Embedded Deep Learning Chip

Supports AcuSense algorithm with
human/vehicle classifications

Product Showcase

DS-2CD2087G2-L(U)

8 MP ColorVu Bullet Network Camera

- 0.0005 lux @ F1.0
- 2.8, 4 or 6 mm fixed lens
- Colorful imaging 24/7
- Human/vehicle classification
- H.265+/H.265
- IP67
- 130 dB WDR
- -U: build-in microphone

AcuSense

DS-2CD2T87G2-L

8 MP ColorVu Bullet Network Camera

- 0.0005 lux @ F1.0
- 2.8, 4 or 6 mm fixed lens
- Colorful imaging 24/7
- Human/vehicle classification
- H.265+/H.265
- IP67
- 130 dB WDR

AcuSense

DS-7732NI-I4/24P

32-Channel NVR with 4 HDDs

- Up to 32 video channels
- Decoding formats: supporting H.265/H.265+/H.264/H.264+/MPEG4
- Bandwidth: 320 Mbps incoming, 256 Mbps outgoing
- 16-ch 1080p decoding
- 2 HDMI, 1 VGA and 1 CVBS output
- eSATA by default.
- 24 PoE ports
- 1.5U chassis

DS-7732NI-I4(/16P)(B)

32-Channel NVR with 4 HDDs

- Up to 32 video channels
- Decoding formats: supporting H.265/H.265+/H.264/H.264+/MPEG4
- Bandwidth: 256 Mbps incoming, 256 Mbps outgoing
- 16-ch 1080p decoding
- 2 HDMI, 1 VGA and 1 CVBS output
- eSATA by default.
- Optional 8 PoE ports, with /8P model
- 1.5U chassis

DS-7616NI-I2(/16P)

16-Channel NVR with 2 HDDs

- Up to 16 video channels
- Decoding formats: supporting H.265/H.265+/H.264/H.264+/MPEG4
- Bandwidth: 160 Mbps incoming, 256 Mbps outgoing
- 16-ch 1080p decoding
- 1 HDMI, 1 VGA and 1 CVBS output
- Optional 8 PoE ports, with /8P model
- 1U chassis

DS-7716NI-I4(/16P)(B)

16-Channel NVR with 4 HDDs

- Up to 16 video channels
- Decoding formats: supporting H.265/H.265+/H.264/H.264+/MPEG4
- Bandwidth: 160 Mbps incoming, 256 Mbps outgoing
- 16-ch 1080p decoding
- 2 HDMI, 1 VGA and 1 CVBS output
- eSATA by default.
- Optional 8 PoE ports, with /8P model
- 1.5U chassis

DS-7608NI-I2(/8P)

8-Channel NVR with 2 HDDs

- Up to 8 video channels
- Decoding formats: supporting H.265/H.265+/H.264/H.264+/MPEG4
- Bandwidth: 80 Mbps incoming, 256 Mbps outgoing
- 16-ch 1080p decoding
- 1 HDMI, 1 VGA and 1 CVBS output
- Optional 8 PoE ports, with /8P model
- 1U chassis



Headquarters

No.555 Qianmo Road, Binjiang District,
Hangzhou 310051, China
T +86-571-8807-5998
overseasbusiness@hikvision.com



Stunning Color Images 24/7 Now Available in

4K

ColorVu
Cameras

HIKVISION®

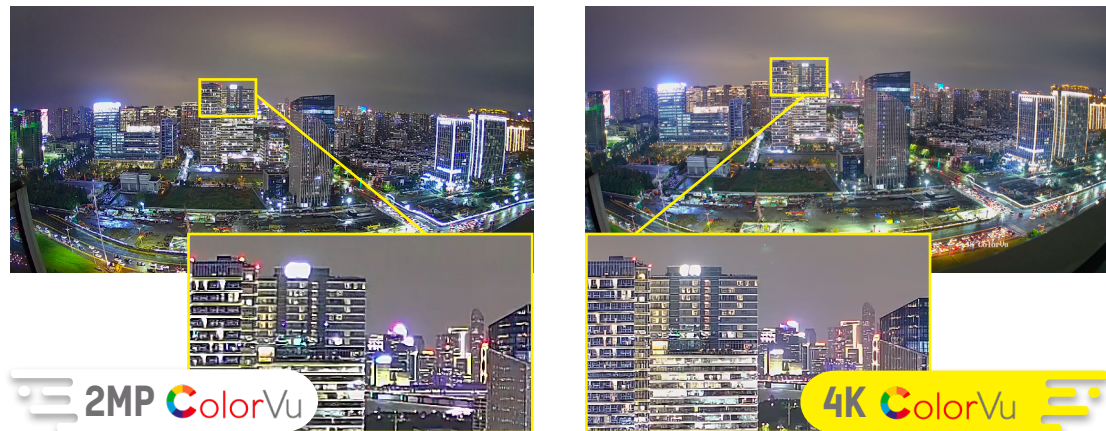
www.hikvision.com

With New ColorVu Network Cameras, You'll Enjoy

Images shot by ColorVu camera were with supplementary light OFF

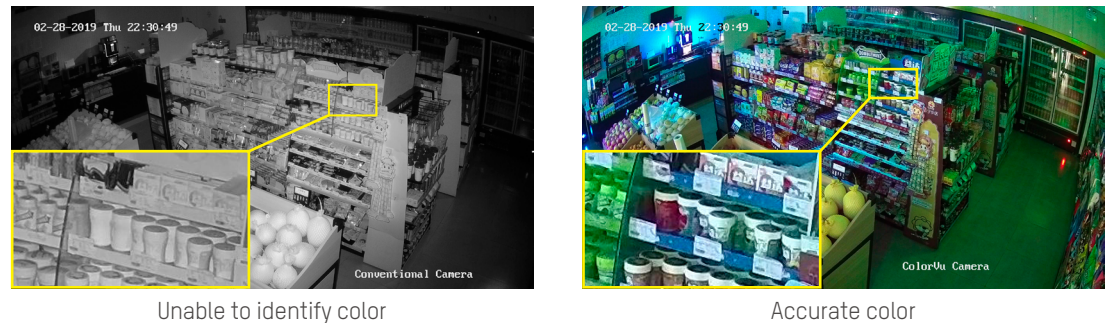
Ultra High Definition

The 4K resolution provides great details, especially suitable for open spaces and large scenes.



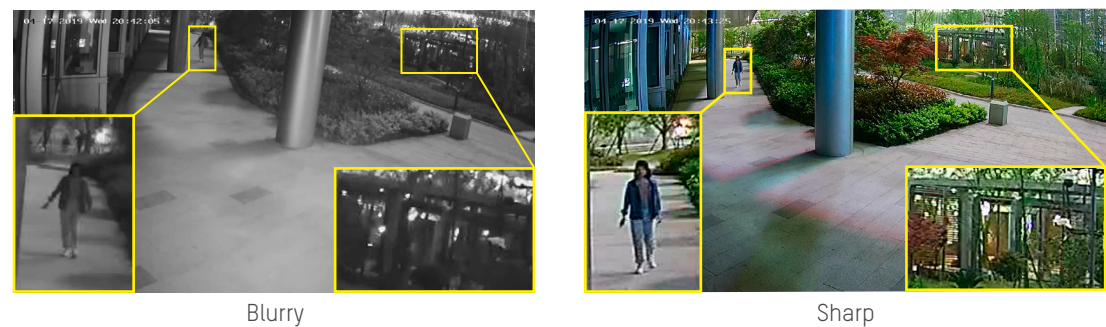
True Color Information

- Accurate color rendering
- Excellent performance in low-light environments



Better Visual Experience

- Balanced brightness
- F1.0 super aperture and advanced sensor guarantee realistic rendering



24/7 Color Imaging with Target Classification

ColorVu cameras capture human and vehicle targets with vivid details, providing video coverage with more useful information.



- IR reflection on smooth surfaces may cause interferences in video
- Insufficient features on detected human targets



- Supplemental light is not needed in most scenes, reducing risk of reflections
- Human targets are captured with colorful detail, providing more information

* Conventional camera images shown were shot with IR on and ColorVu camera images without supplemental light.



- Unable to identify license plate numbers due to IR reflection
- Unable to identify vehicle color in dark environments



- License plates are visible in color without any blur or reflection
- The color of each vehicle is clear and easy to see, even in darkness

* Conventional camera images shown were shot with IR on and ColorVu camera images without supplemental light.