

# Designed and developed for the Internet of Things

## Hybrid SAN Super Capacity Storage

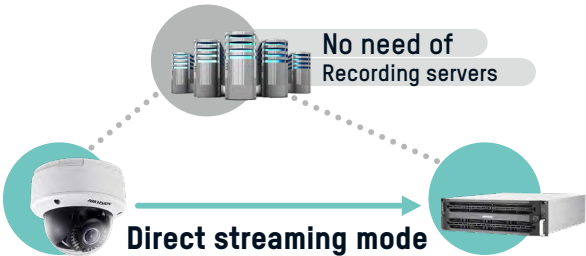
In 2021, there will be around 5 million or more smart sensors and other IoT devices worldwide, producing data amounting to 500+ Zettabytes.

How storage providers manage total storage costs at such a rapidly expanding scale? That's where Hikvision's Super Capacity storage comes in.



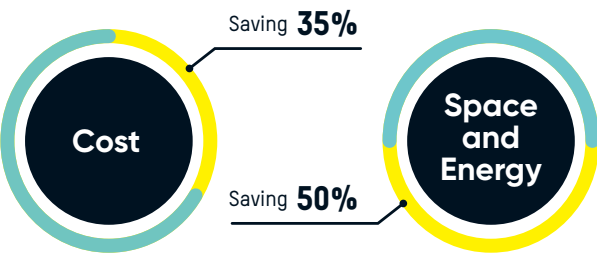
## HIGH EFFICIENCY AND PERFORMANCE

In direct streaming mode, Hikvision's Super Capacity storage solution **reduces your expenditures on recording servers** (With the IP SAN solution, every 200 IP cameras require at least 1 recording server), while also improving the efficiency of search and write operations with a simplified process. This makes applications more flexible and more budget-friendly.



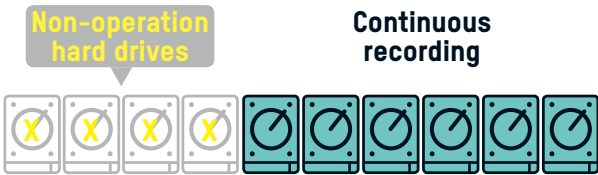
## COST EFFECTIVE SOLUTION

Hikvision's solution takes up less space in the equipment room, uses less electricity, and lowers implementation time – saving you time and money. Compared to the current 8 TB HDD storage devices, the 18 TB SMR HDD saves users up to 35% of cost per TB, and up to 50% of space and energy consumption per TB.



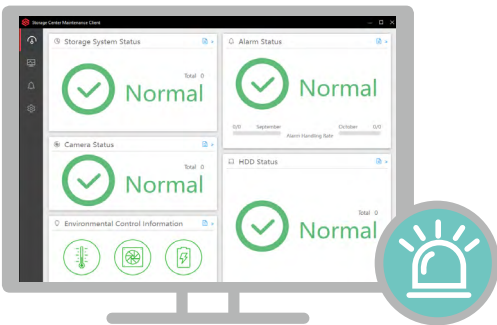
## SAFE AND RELIABLE

Hikvision's iRAID storage technology adds to data security. While traditional RAID stops working when three hard drives fails, iRAID continues to function – so video recording **continues uninterrupted even when four hard drives fail** (the customized version). What's more, data stored on functioning hard drives can still be played back.



## EASY OPERATION AND MAINTENANCE

Our newly released maintenance software supports easy one-stop configuration, saving time and enhancing efficiency. The status of HDDs, CPUs, power units, and fans will be monitored in real-time and alarm messages will be shown when problems occur.



## PRODUCT SPECIFICATIONS

### Hybrid SAN DS-AT1000 Models

						
Model		DS-AT1000S/144	DS-AT1000S/234	DS-AT1000S/288	DS-AT1000S/342	DS-AT1000S/432
Performance	Video [2 Mbps]	180-ch	256-ch	256-ch	400-ch	400-ch
	Processor	64-bit multi-core processor				
Controller	Cache	12 GB			16 GB	
	HDD slot	16			24	
Storage	Number of HDD	8	13	16	19	24
	RAID Level	RAID5	RAID6	RAID6	RAID6	RAID6
	Interface	SATA				
	Capacity	Up to 18 TB				
	RAID	RAID5,RAID6,iRAID				
	Disk	Disk detection pre-alarm and repair				
	Logical volume	Recording volume management				
Recording	Recording type	Continuous, manual, and alarm recording				
	Video protection	Video loss alarm				
	Search and download	Log in storage system to search, play, and download videos. Supports searching videos by time, event type, and smart information				
Maintenance & Management	Management method	GUI based on web, serial port CLI, platform				
	Alarm method	Audio, Indicator, GUI				
Network	Protocol	RTSP, ONVIF				
External Interface	Data network interface	Three 1,000-Mbps Ethernet interface			Four 1,000-Mbps Ethernet interface	
	Management network interface	One 1,000-Mbps Ethernet interface				
Video Management Platforms		HikCentral, iVMS-4200				
Authentication		CE, FCC, UL				

# Designed and developed for the Internet of Things

Hybrid **SAN** Super Capacity Storage

Distributed by



**HIKVISION**

Follow us on social media to get the latest product and solution information



HikvisionHQ



Hikvision



HikvisionHQ



Hikvision\_Global



hikvisionhq



Hikvision Corporate Channel



[www.hikvision.com](http://www.hikvision.com)