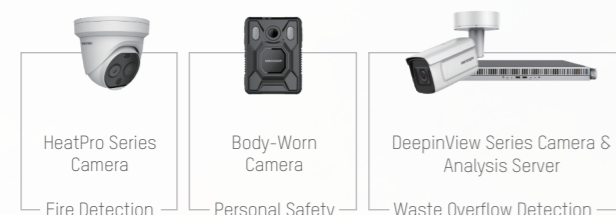


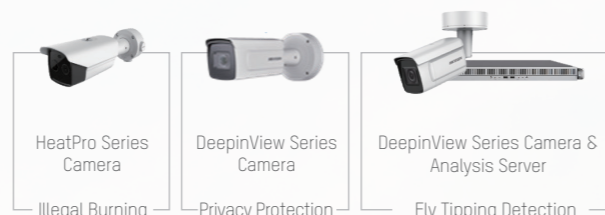
Waste Management Solution

Safeguarding optimal efficiency in the municipal management

Waste Collection



Landfill



Waste Transfer



Waste Recycling



Headquarters
No.555 Qianmo Road, Binjiang District,
Hangzhou 310051, China
T +86-571-8807-5998
overseasbusiness@hikvision.com



What we offer

Hikvision's Waste Management Solution provides an end-to-end full life cycle solution for our customers. By combining multi-dimensional perception, thermal imaging, and artificial intelligence technologies with video security, we can enhance waste management by monitoring the level of waste bins in real-time, detecting risks earlier, and enhancing operational security.

Waste Transfer



Vehicle Tracking & Video Security

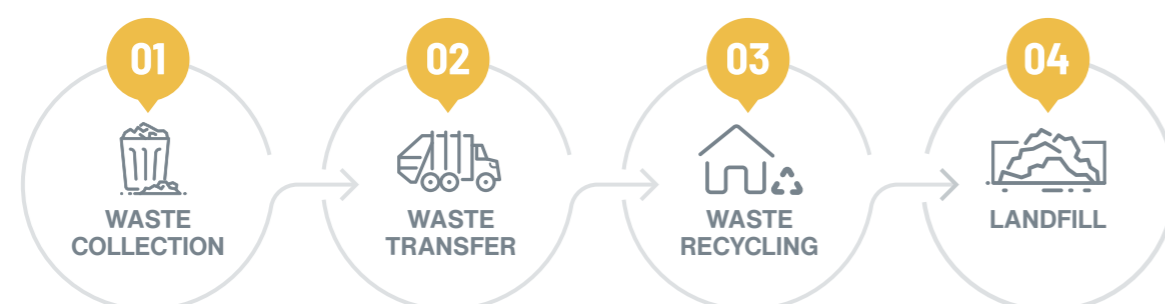
- Intelligent Driving Analysis
- Blind Spot Detection
- Intelligent Front-Collision Warning
- Speed Radar Detection for Rear Collisions

Driver Protection & Assistance

- Panic Button Alert
- Real-time Monitoring
- Route & Speed Control
- Video Recording & Retrieval



Solution workflow



- Video evidence during collection
- Safety risks during collection

- Evidence for accidents & drivers' innocence
- At-risk driving detection

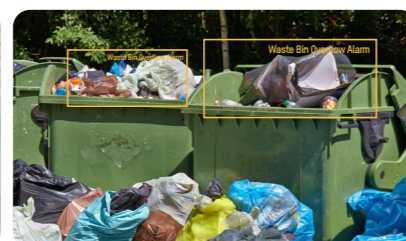
- Fire detection
- Evidence of overloading & data spoofing
- Personal data protection

- Supervision over waste procedures

Waste Collection



Smoke & Fire Detection



Waste Bin Overflow Detection



Personnel Safety Protections

Landfill



Large scale fly tipping incident



Illegal burning of waste



Illegal waste site

AI Training Platform

