

Video Security Solution for Buses



Video Security Solution for Buses

Onboard Security

HIKVISION

Distributed by



Headquarters

No.555 Qianmo Road, Binjiang District,
Hangzhou 310051, China
T +86-571-8807-5998
overseasbusiness@hikvision.com

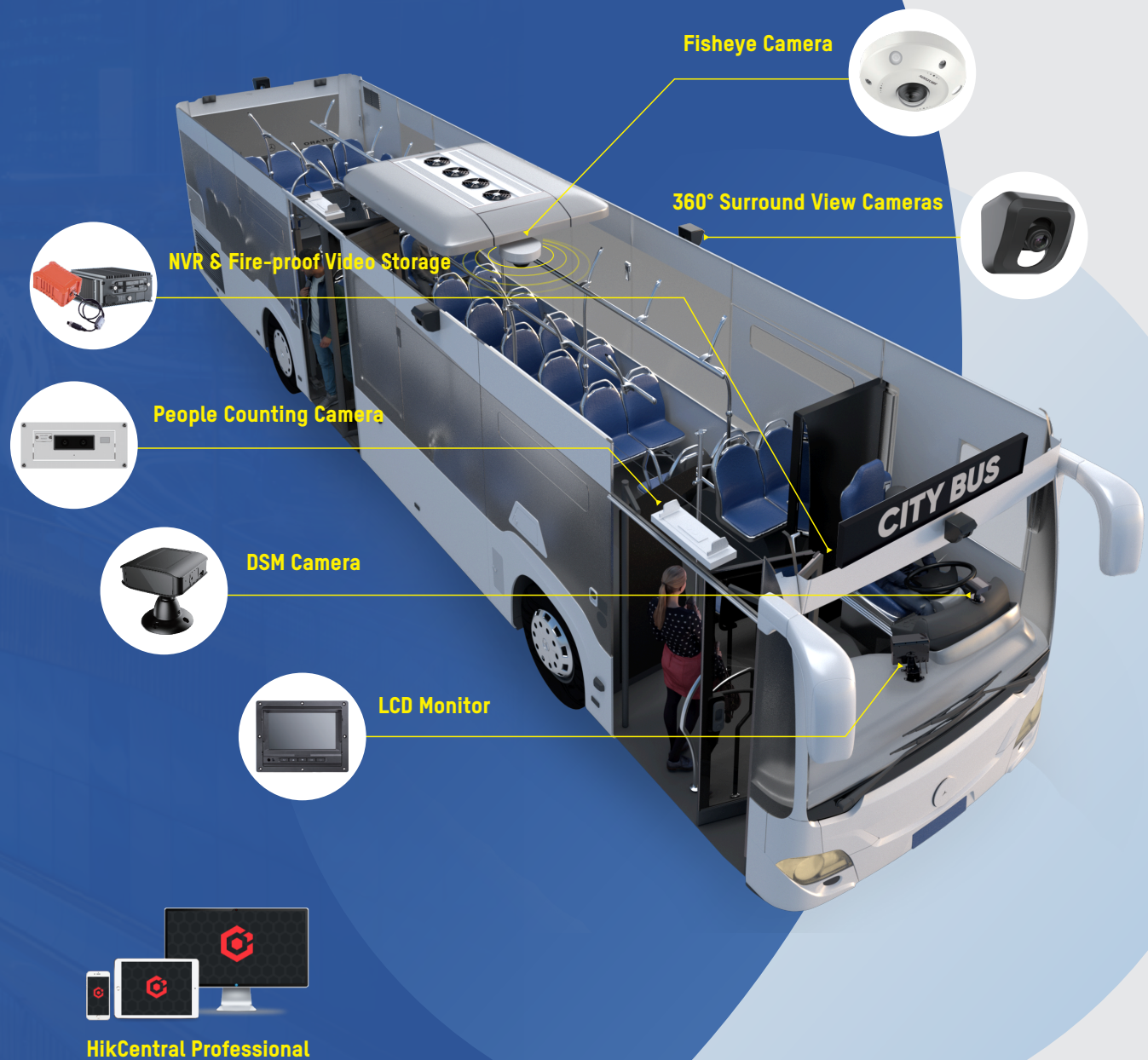
HIKVISION

Video Security Solutions for Buses

Public buses are key elements in city life around the world. They reduce the number of private automobiles on the road and thereby improve transportation environments and reduce traffic pressures – not to mention providing essential transportation for millions of people every day, on every continent.

Security for system operators, passengers and drivers, however, must overcome a number of challenges to be effective, such as lack of evidence for traffic accidents, theft and other crimes on the bus, fatigued driving, fare dodging, and more. Nevertheless most of buses cannot provide high definition video monitoring and limited field of view to maintain a safe and effective operation. Lack of intelligent management, bus scheduling and congestion cannot be arranged properly.

But today, Hikvision offers the optimal video security solution for all kinds of bus systems and the people involved. Read on to find out more.

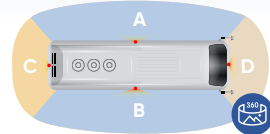


Solution Structure

01 Video Security



The Video Security System provides **high-definition** indoor and outdoor monitoring for driving support and keeps records to provide evidence of incidents. **360° panoramic** camera with all round view offers a fundamental basis for safer driving. Moreover, **outdoor cameras** offer practical drive assistance to reinforce the driving safety.



02 People Counting

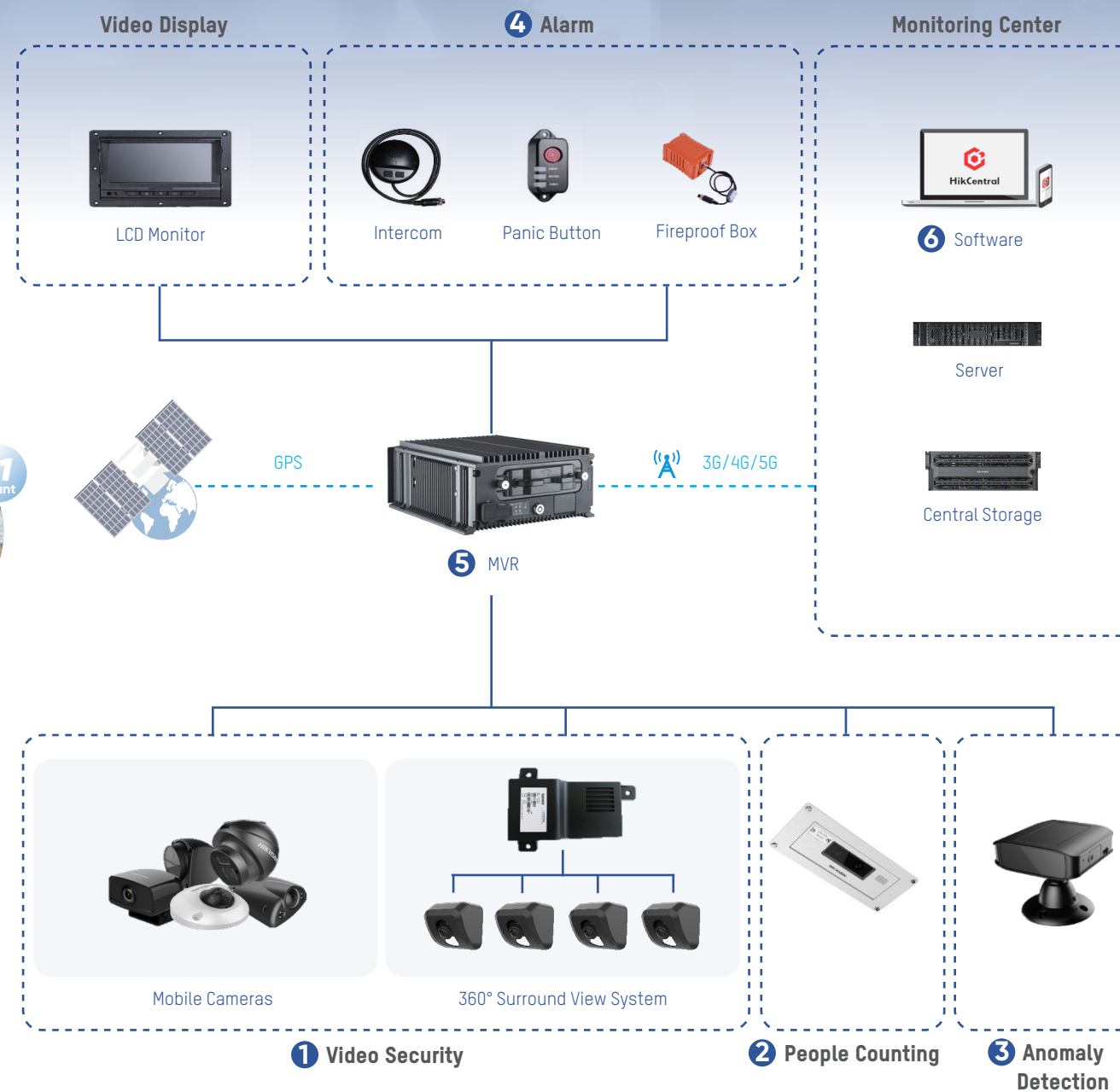
The People Counting Camera can intelligently count the number of passengers getting on and off, and distinguish children from adults by achieving accurate height measurements and head-to-shoulder ratios. After collecting passenger flow information, the data will be analyzed for better bus scheduling, fare checking, and further operational analysis.



03 Anomaly Detection

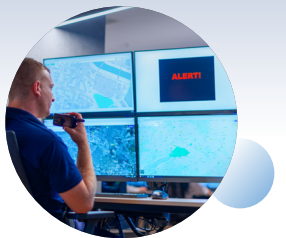


The DSM Camera can intelligently detect potential risks. By doing so, drivers can navigate prudently with prudent awareness.



04 Alarm Management

The Alarm System includes emergency, fence-crossing, safe driving, and deviation alarms. For emergencies, the driver can notify the platform through the alarm button or speak through a two-way intercom. For driving alarms, like deviation and fence-crossing, the platform can receive the real-time video and bus location to maintain the safe operation. Besides, anomaly detection will also provide prompt alarms for safe driving.



05 Transmission Network

The MVR communicates with the platform using a 3G/4G communication module. Also, the communication module now supports 5G connectivity, which ensures a faster and more stable connection. Along with that, the build-in GPS module is mounted on the vehicle for real-time positioning and video display.



* Supports: 2.4G & 5GWi-Fi
FDD LTE: B1/B2/B3/B4/B5/B7/B8/B20/B28, TDD LTE: B40

06 Management Platform

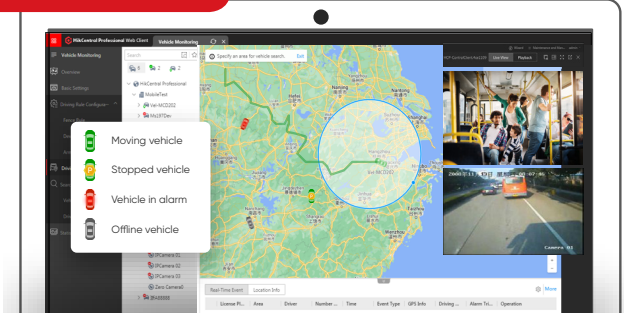
The whole system is managed by Hikcentral Professional, which conveniently provides functions like video monitoring, recording, playing back footage, real-time positioning, tracked playback, data statistics, and more. The operator can set up automatic video backup according to time and bus number.



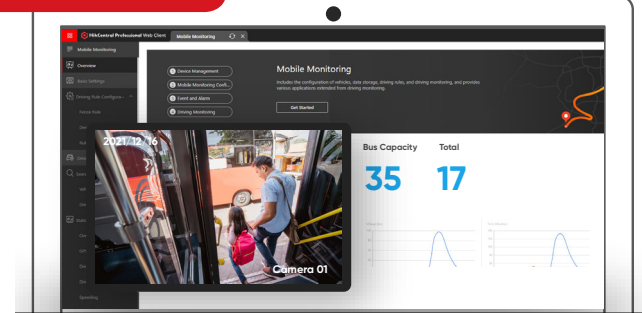
System Function

This Bus Security Solution provides effective video monitoring and vehicle control. Video and audio data are collected by on-board cameras and audio perception. Audio and video data can be stored, backed up, and uploaded to the platform for viewing and playback. The operator can browse real-time video with the user-friendly mobile phone app. The GPS function pops up with real-time positioning, and route and fence-crossing detections, while facilitating vehicle control.

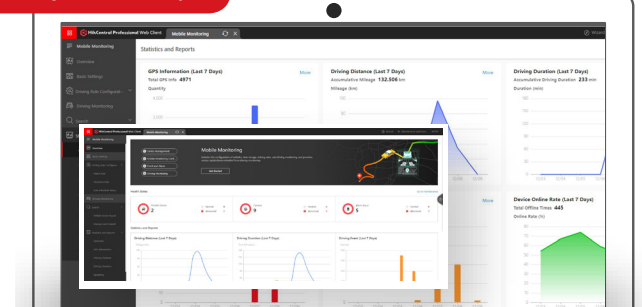
Real-time Tracking



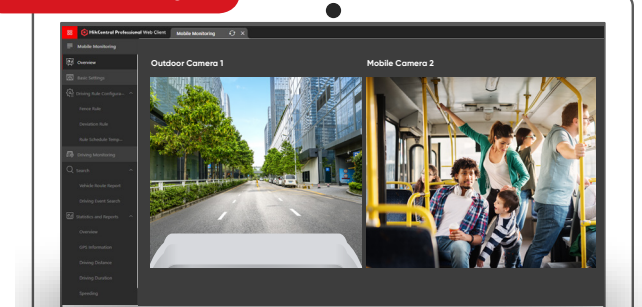
People Counting



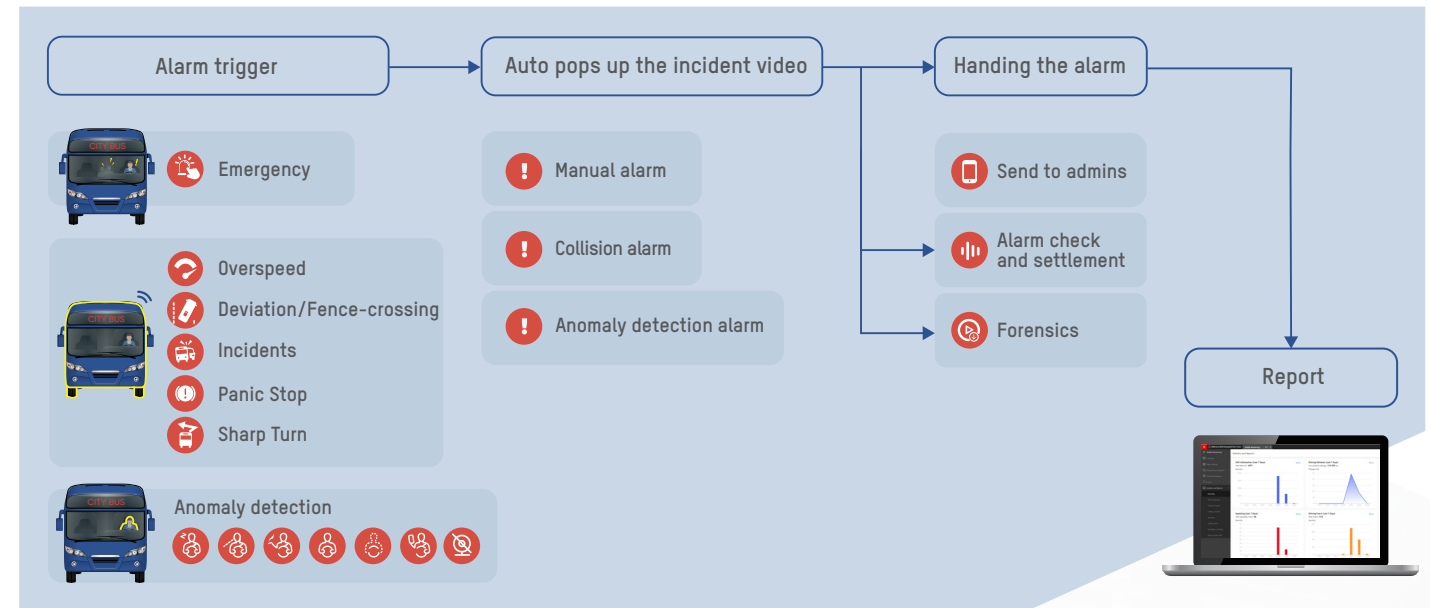
Intelligent Data Report



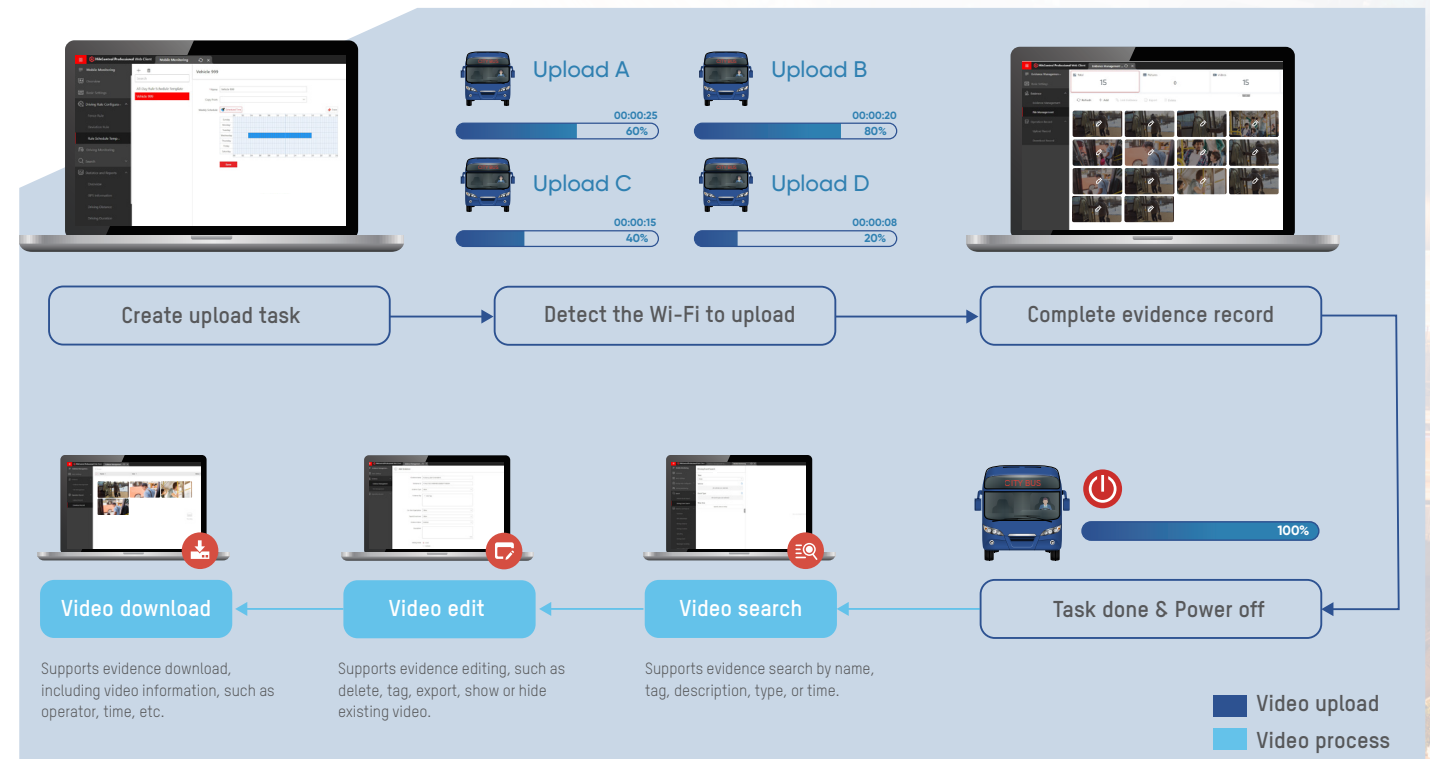
HD Monitoring



Alarm Management



Intelligent Video Management



* GPS Information Report, Driving Distance Report, Driving Duration Report, Speeding Report, Driving Event Report (including DSM), Device Online Rate Report, etc.

Product Features

Mobile NVR/DVR



Reliable Power Supply Design

- Power supply supports 8-36 VDC
- Electromagnetic immunity design conforms to the automobile ISO-7637 electromagnetic standard
- Suitable for all types of vehicles



No Break Power Design

- First to be utilized in the industry
- Ensures video is written to the hard drive at the moment of power failure



GPS Filtering

- Equipped with high-sensitivity antenna and GPS filtering algorithms, GPS Filtering resolves problems with fixed-point drift, velocity drift, and other abnormal data. Moreover, supporting data retransmission, the challenge of information loss without internet will be fixed properly.



Rich Interfaces

- Highly-functional hardware interfaces – such as Standard M12-D Code, RJ45, and other signals – meet a multitude of application requirements and scenarios



Anti-seismic Design

- Top-rated shockproof hard drives employed
- Patented metal air bag damping technology



Perfect Video Recording

- Supports a variety of storage media
- Supports SD card redundancy recording when if hard drive is damaged
- Supports fire box storage / redundancy recording



Aviation Gyroscope

- Built-in G-sensor & gyroscope sensor provide emergency response to collision and rollover accidents to restrict or eliminate dangerous driving habits such as rapid acceleration, deceleration, or braking, and turning too sharply



Dual System Backup

- Dual system firmware is built in the vehicle host to ensure normal operation of the device after restarting

Mobile Camera



HD Video Security

- All-round cameras with high definition, including 2MP, 5MP, 6MP, and 12MP, can provide better recording, tracking, and deterrence



Intelligent Heating Control

- Outdoor Cameras, like XM65 series, come up with heating module, which operate based on outdoor temperatures, and best in ambient temperatures from -40° to 70°C



IK10+ Impact Protection

- Protected against 20-joule impacts
- Equivalent to impact of a 5 kg mass
- Dropped from 400 mm above impacted surface



IP68 Waterproof Rating

- Water pressure: 400 KPa
- Water flow: 100L/min
- Depth: 2.5 – 4 m
- Test duration: >3 mins

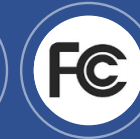
Certifications

All devices of Hikvision bus solution qualify for those certifications.

EMC/LVD/RED



Safety



Environment



E-MARK



Flame retardant certification



EN45545

Railway

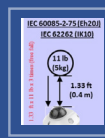


EN 50155-2017 and
EN 50121-3-2

Degrees of Protections

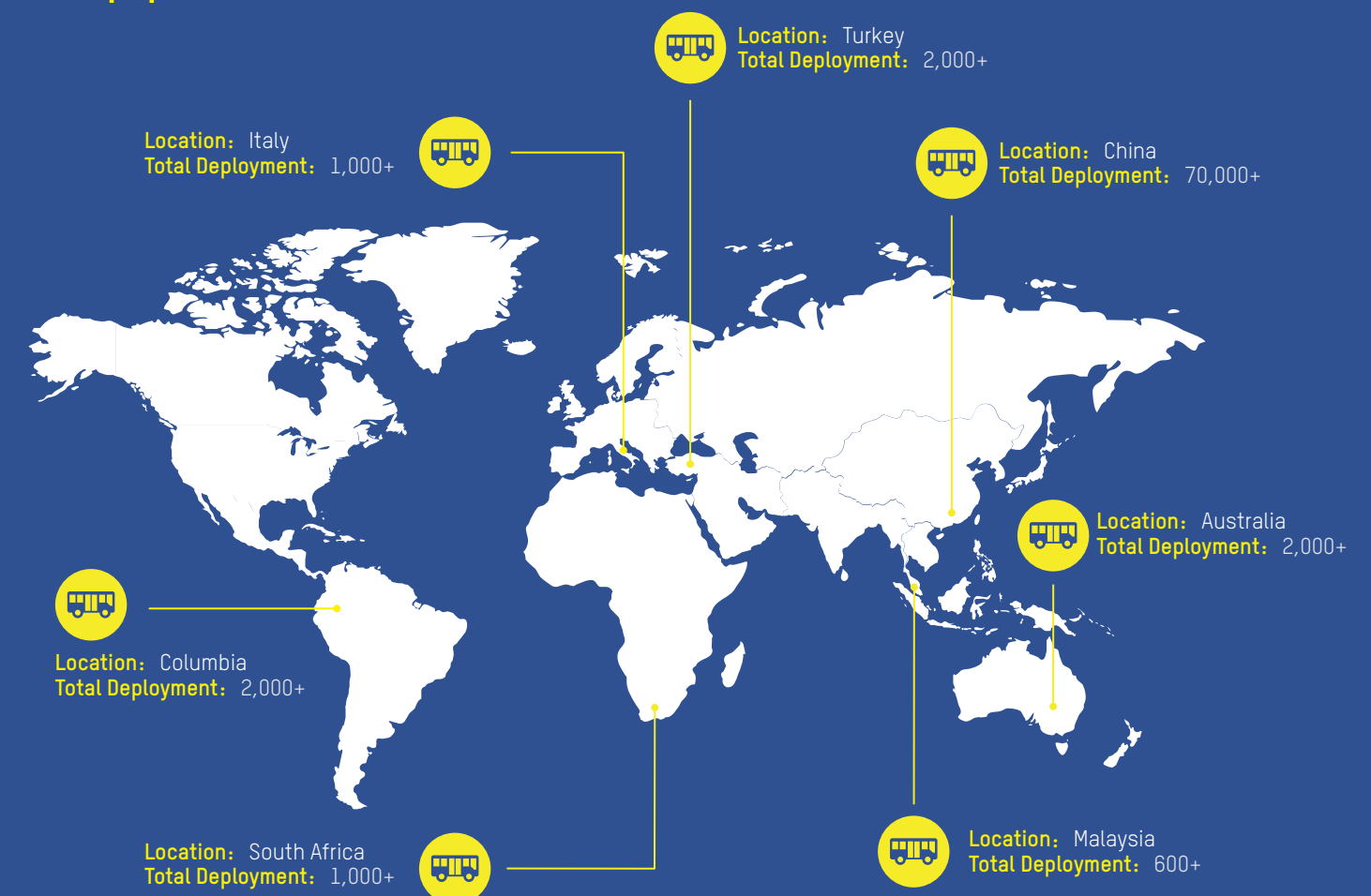


IP66, IP67, IP68



IK10

Application Scale



Product Introduction

HIKVISION



4-Channel MVR

- 4-ch 4MP PoE IPC + 4-ch 6MP IPC via PoE switch
- Pluggable anti-vibration HDD box , 2*2.5 inch HDD/SSD (2TB for each) , 1 x SD card
- 3G/4G, 5.8G WiFi, GPS, H.265
- Full load consumption ≤ 45 W
- 206 × 219 × 60 mm (8.1 × 8.62 × 2.36 inch)
- 1.6 kg (3.5 lb)
- CE, FCC, EN50155, EN45545, EN50121, E-mark, CB, RoHS, WEEE



8-Channel MVR

- 8-ch 8MP PoE IPC+8-ch 6MP IPC via PoE switch
- Pluggable anti-vibration HDD box , 2*2.5 inch HDD/SSD(2TB for each) , 1 x SD card
- 3G/4G, 5.8G WIFI, GPS, H.265
- Full load consumption ≤ 99 W
- 202 × 267.6 × 93.9 mm (7.95 × 10.5 × 3.7 inch)
- 3.66 kg (8.07 lb)
- CE, FCC, EN50155, EN45545, EN50121, E-mark, CB, RoHS, WEEE,MIL-STD 810G



DS-2XM6122G0

- 2MP resolution,1920 × 1080 @25fps
- 2mm/2.8mm/4mm/6mm fixed lens
- 1 Built-in microphone
- H.265+, IP66, IK08
- 24 VDC, 0.2 A, 5 W or PoE (802.3af, 36 V to 57 V), 0.2 A to 0.1 A, class 3
- Approx. 430 g (0.9 lb.)
- CE, FCC, UL, E-Mark, EN50155, EN45545, EN50121, KC, REACH, RoHS,R118,WEEE,BIS,IK,IP



DS-2XM6222G0

- 2MP resolution, 1920 × 1080 @25fps
- 2.8mm/4mm/6mm fixed lens
- H.265+,IP67, IK10
- 24 VDC, 0.22 A, max. 5.2 W or PoE (802.3af, 36 V to 57 V), 0.14 A to 0.09 A, max. 5.2 W
- Approx. 330 g (0.7 lb.)
- CE, FCC, UL, E-Mark, EN50155, EN45545, EN50121, KC,RoHS,R118,WEEE,BIS,IK,IP



DS-2XM67 Series

- 2MP resolution,1920 × 1080 @25fps
- 5MP resolution,3072 × 1728 @ 20fps
- 2mm/2.8mm/4mm/6mm/8mm fixed lens
- 1 Built-in microphone
- H.265+, IP67, IK10
- 24 VDC, 0.3 A, max. 7.5 W or PoE (802.3af, 36V to 57V), 0.30 A to 0.20 A, max: 7.5W
- Approx. 460 g (1 lb.)
- CE, FCC, UL, E-Mark, EN50155, EN45545, EN50121, KC, REACH, RoHS,R118,WEEE,BIS,IK,IP



DS-2XM6522G0

- 2MP resolution, 1920 × 1080 @25fps
- 2.8mm/4mm/6mm fixed lens
- 3-Axis adjustment
- H.265+, IP69K, IK10+
- 24 VDC, 0.36 A, max. 8.6 W or PoE (802.3af, 36 V to 57 V), 0.25 A to 0.15 A, max. 8.8 W
- Approx. 850 g (1.9 lb.)
- CE, FCC, UL, E-Mark, EN50155, EN45545, EN50121, KC,RoHS,R118,WEEE,BIS,IK,IP



DS-2XM6825G0/C

- Dual lens, 1920 × 1200 @ 25fps
- 2 mm fixed lens
- 1 Built-in microphone
- Flash memory storing people counting data
- H.265+, IP66, IK08
- 24 VDC, 0.31 A, max. 7.4 W or PoE (802.3 af, 36 to 57 VDC), 0.22 A to 0.13 A, max. 7.8 W
- Approx. 640 g (1.4 lb.)
- CE, FCC, UL, E-Mark, EN50155, EN45545, EN50121, KC,RoHS,R118,BIS,IK,IP



DS-2XM63 Series

- 6MP,3072 × 2048 @ 25fps,1.27 mm fixed lens
- 12MP, 4000 × 3000@20fps, 2 mm fixed lens
- 2 Built-in microphones
- H.265+, IP66, IK10
- 24 VDC, 0.40 A, max. 12 W or PoE(802.3af, 36 to 57 VDC), 0.34 A to 0.22 A, max. 12 W
- Approx. 600 g (1.32 lb.)
- CE, FCC, UL, E-Mark, EN50155, EN45545, EN50121, KC,RoHS,R118,BIS,IK,IP



DSM Camera

AE-VC1B1I-ISF

- 720P@25fps
- 6 mm fixed lens
- 2 x 940nm LEDs
- Built in speaker
- 1 TF card, up to 256GB
- Consumption ≤ 7W
- Wide-range Input DC 9~ 36V
- 92 x 90 x 106 mm (37.8 x 35.5 x 41.8 inch)



Fireproof Box

DS-MP1431-64G

- Video mirror backup for data protection
- Fire resistance time:15 min@1100 °C, 20 min@950 °C, 120 min@260 °C
- Waterproof: 24 hour@100 m (10 ATM)
- High Speed Impact:100 Gs@50 ms
- Static Squeeze:100 KN@5 min
- Consumption ≤ 0.5W
- 122 x 88 x 57 mm (4.8 x 3.5 x 2.2 inch)
- Approx.0.97 kg (2.1 lb)



360° Surround View Monitor Host

AE-VE242A-A

- Support 4 channels of 720P TVI cameras
- 3D panoramic splice the front, rear, left and right images of the vehicle body
- 4-way HDTVI input, 1-way HDTVI output
- Can Bus interface
- TF card slot x1
- Mini USB interface x1



360° Surround View Camera

AE-VA133T-A

- Lens (metal shell): 0.9mm fisheye lens
- H (transverse): 190 ° / V (longitudinal): 116 °
- Sensor type: 1 / 4 "1.3 Mega CMOS
- Minimum illumination: 0.1 lux @ (f1.2, AGC on)
- Protection grade: IP68
- Interface: 4-core BMW head interface

Hikvision Australia
T +61-2-8599-4233
salesau@hikvision.com

Hikvision Azerbaijan
T +994 50 369 81 57
Azerbaijan.CATC@hikvision.com

Hikvision Brazil
T +55-11-3318-0050
Latam.support@hikvision.com

Hikvision Canada
T +1-866-200-6690
sales.canada@hikvision.com

Hikvision Colombia
sales.colombia@hikvision.com

Hikvision Czech
T +420 29 6182640
info.cz@hikvision.com

Hikvision Egypt
T +20223066117
sales.eg@hikvision.com

Hikvision Europe
T +31 23 5542770
sales.eu@hikvision.com

Hikvision France
T +33(0)1 85 330 450
info.fr@hikvision.com

Hikvision Germany
sales.dach@hikvision.com

Hikvision Hong Kong , China
sales.hk@hikvision.com

Hikvision Hungary KFT
info.hu@hikvision.com

Hikvision India
T +91-22-6855 9944
sales@pramahikvision.com

Hikvision Indonesia
T +6221 2933 9366
Sales.Indonesia@hikvision.com

Hikvision Israel
T +972 79 5555590
sales.israel@hikvision.com

Hikvision Italy
T +39 0438 6902
info.it@hikvision.com

Hikvision Kazakhstan
T +7 (727) 291-75-88
support@hikvision.kz

Hikvision Kenya
wangchengbin@hikvision.com

Hikvision Korea
T +82-1661-8138
sales.korea@hikvision.com

Hikvision Malaysia
T +60327224000
sales.my@hikvision.com

Hikvision Mexico
T +52 55 2624 0110
sales.mexico@hikvision.com

Hikvision New Zealand
T 09 217 3127
salesnz@hikvision.com

Hikvision New Panama
Sales.centralamerica
@hikvision.com

Hikvision Pakistan
T +92-2135147526
support.pk@hikvision.com

Hikvision Philippines
support.ph@hikvision.com

Hikvision Poland
T +48 22 460 01 50
info.pl@hikvision.com

Hikvision Russia
T +7-495-669-67-99
saleru@hikvision.com

Hikvision Romania
marketing.ro@hikvision.com

Hikvision Singapore
T +65 6684 4718
sg@hikvision.com

Hikvision South Africa
T +27 877018113
sale.africa@hikvision.com

Hikvision Spain
T +34 91 737 16 55
info.es@hikvision.com

Hikvision Tashkent
T +99-87-1238-9438
uzb@hikvision.ru

Hikvision Thailand
sales.thailand@hikvision.com

Hikvision Turkey
T +90 216 521 70 70
support.tr@hikvision.com

Hikvision UAE
T +971-4-4432090
salesme@hikvision.com

Hikvision UK & Ireland
T +44(0)1628 902 140
info.uk@hikvision.com

Hikvision Uzbekistan
T +998-71-233-55-50
uzbekistan@hikvision.com

Hikvision USA
T +1-909-895-0400
sales.usa@hikvision.com

Hikvision Vietnam
T +84 24 7300 7586
sale.vn@hikvision.com