

Making AI  
a Breeze



# K-Series NVRs with AcuSense

Level up your security system with **AI analytics** and **stronger decoding capacity!**

Whether you're building a startup or running a well-established local store, you'll find Hikvision's K-Series NVRs with AcuSense a smart and powerful security solution.



The K-Series gives you:



**AI-classified** object detection and search



Four dedicated channels of **facial recognition** with image streams



Up to **12 1080p video channels** concurrently

**HIKVISION**<sup>®</sup>

[www.hikvision.com](http://www.hikvision.com)

**Product Highlights**



**Motion Detection 2.0**

Humans and/or vehicles in a camera's field of view trigger an automated response. This configuration-free function is ON by default and generates much fewer false alarms than conventional Motion Detection.



**Perimeter-Protection Analytics**

Trespassers get detected at perimeters. Alerts get sent to users immediately via app notifications or short messages. Users can flexibly set their detection areas and rules for customized protection.



**Quick Target Search**

Video clips get sorted into "Person Files" and "Vehicle Files." This means homeowners and business operators can click on a category and use time or location information to quickly locate the clip that they want.



**Facial Recognition**

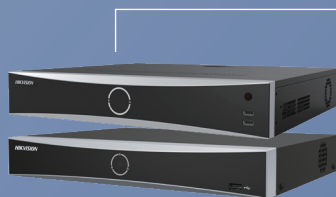
Supports four channels of facial recognition with image streams from AI-powered analytical cameras, and one channel of facial recognition with video feed from a conventional security camera.



**High Decoding Capacity**

Decodes up to 12 channels of video at 1080p resolution for simultaneous multi-channel playback, giving security personnel a monitoring boost.

**Product Showcase**



DS-7600NXI-K1  
DS-7600NXI-K2  
DS-7700NXI-K4

- Two channels @ 12 MP, three @ 8 MP, six @ 4 MP, or twelve @ 1080p decoding capacity
- All channels of Motion Detection 2.0
- Two channels of Perimeter-Protection Analytics
- One channel of facial recognition with video streams or four channels of facial recognition with image streams
- Supports up to 10 TB capacity per HDD



**Headquarters**  
No.555 Qianmo Road, Binjiang District,  
Hangzhou 310051, China  
T +86-571-8807-5998  
overseasbusiness@hikvision.com

