

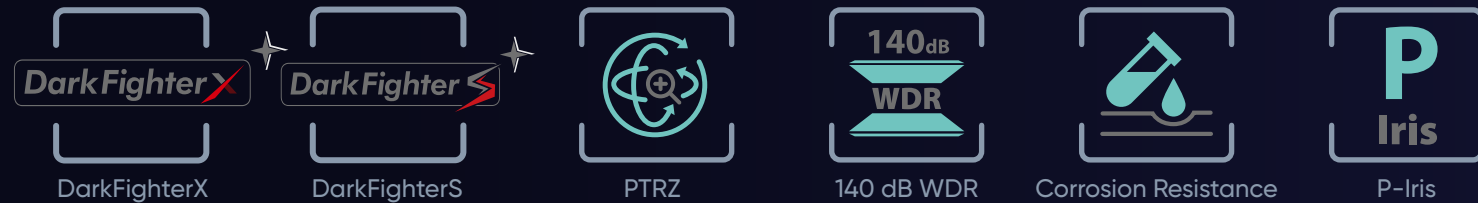
The Hikvision logo is displayed in the top right corner in a white, italicized, sans-serif font. The background of the entire slide is a dark blue gradient with a pattern of small, light blue squares and dots, resembling a digital or network grid. A faint, stylized line drawing of a camera is visible in the center, and a large, semi-transparent sphere is on the left side.

HIKVISION®

Deeper Intelligence beyond the Edge

Hikvision DeepinView Series Cameras

Meet Hikvision's Premier Network Cameras



Conventional security cameras generate large amounts of video every day, but rarely make full use of it. Today, there are better ways to extract valuable data from video. What's more, that data can inform decision-making in real time.

By automating detection, categorization, and analysis of significant objects or events at the edge of the security systems, Hikvision's DeepinView Series Cameras help users tap into the potential power of video-security systems and deepen their insights for smarter operations.

These cameras maximize video data utilization with the following advantages.



Wide coverage & sharp details
around the clock



A variety of AI algorithms
for diverse scenarios

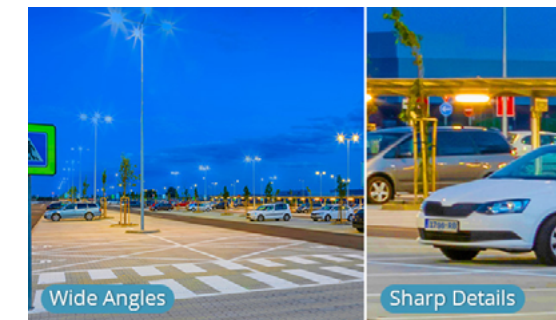


Ease of installation, operation,
and maintenance

More lenses, more sensors, more intelligence

Two views in one camera

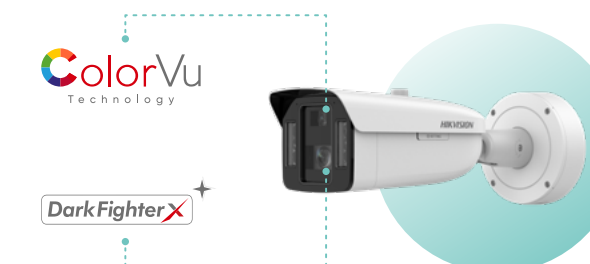
These DeepinView Cameras come equipped with the 2-in-1 TandemVu design – combining two lenses and two sensors in one camera so that you get two video channels with one purchase. The dual lenses are smartly linked to make the system even more agile.



These **Multi-Lens DeepinView Cameras** provide great situational awareness in open, outdoor areas such as city roads and business parks with high traffic flows and the need to capture details such as number plates.

Dual-tech, superior night vision

These cameras support two of Hikvision's proprietary low-light imaging technologies:
ColorVu – Providing night images in color with a fixed, F1.0 lens that lets in as much light as possible
DarkFighterX – Ensuring color detail capture in nearly total darkness with two advanced sensors for Bi-Spectrum Image Fusion



Multiple intelligence at once

With two video streams channels, these cameras support even richer analytics around the significant objects and events in sight. Moreover, they support multiple concurrent AI functionalities.



Switchable intelligence, stunning imaging



AI



Switchable-intelligence models

Top-rated imaging performance

Surpassing earlier technology with a larger aperture, more lighting options, and other ways, Hikvision's **DarkFighterS technology** produces professional-quality color imaging in ultra-low light. Even in total darkness, users can still get sharply-focused HD images, whether in color or black & white.

DarkFighter

Superb Low-Light Imaging

F1.0 varifocal lens and 1/1.8" sensor ensure superb color reproduction at a wide range of focal lengths in ambient light as low as 0.0003 lux

Smart Hybrid Light

Three lighting modes offer color, black & white, or motion-triggered color imaging to suit virtually any need in any setting

Super Confocal Technology

Guarantees equally sharp night vision in IR or visible light, leading the industry by achieving a delicate & complex confocal effect with an F1.0 large-aperture lens

More intelligence, not more cameras

Feel free to switch among multiple AI algorithms embedded in one camera that automate perimeter protection, queue detection, personal protective equipment (PPE) detection, and a variety of other functionalities. So when your needs change, you don't have to install a new camera, just select the function you need! Moreover, these cameras can also run AI algorithms trained by end users or AI service providers through Hikvision's AI Open Platform to meet diverse, specific business needs.



Simplified installation and use

No extra steps are needed to install these advanced cameras, and configuring their smart functions is simple, too. The models featuring motorized Pan, Tilt, Rotate, and Zoom (PTRZ) movement allow you to adjust your camera remotely at any time.



These **Switchable-Intelligence DeepinView Cameras** are well suited for use in business environments with general or specific needs for AI analytics.

Tailored intelligence for specific scenarios



Scenario-specific models

ANPR cameras

DeepinView Cameras equipped for Automatic Number Plate Recognition (ANPR) identify vehicles by reading their plate characters automatically at entrances & exits. High recognition accuracy is guaranteed at various angles and in varying light conditions. You can get clear nighttime images in spite of head lights or high beams.



Dock management cameras

DeepinView Cameras for Dock Management not only read vehicle plate characters, but also watch over dock occupation status, truck rear door status, and even loading rates – all to keep you updated on the overall situation and help you optimize the loading and unloading processes.



Education sharing cameras

DeepinView Cameras for remote learning and cross-classroom sharing provide students with close-ups and panoramas of the classroom and lecture, even when they can't meet face to face. The camera catches movements such as chalkboard writing to maintain the same level of engagement between different locations.



These **Scenario-specific DeepinView Cameras** are extensively customized models to meet functional needs in dedicated scenarios.



AI Functions and Applications

Automatic number plate recognition (ANPR)

DeepinView Cameras capture a vehicle's number plate in a very short time. The system compares the number to a list or adds it to one, then takes the appropriate action such as raising a barrier or triggering an alarm. The camera also supports

- Recognizing vehicle features such as color, type, and manufacturer
- Recognizing vehicle travel direction
- Vehicle counting

Minimizing manual operation or intervention, the ANPR function is used widely across a variety of vehicle-identification scenarios. For example, the camera enables **Non-Stop Drive Through** at vehicle entrances and exits as well as **Traffic Violation Evidence Collection** on city roads.

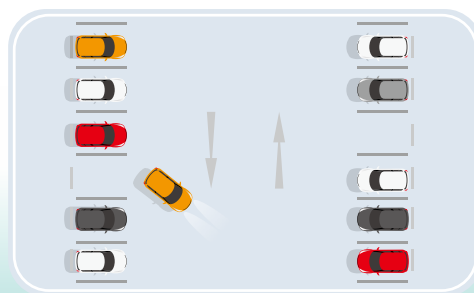
In outdoor parking lots, the camera facilitates **Parking Space Management** by detecting space status in real time so as to help drivers quickly find a vacant space.



Vehicle Entrances



Outdoor Parking Lots



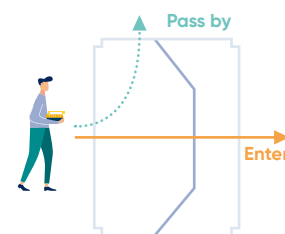
People counting

The DeepinView Camera automatically counts people entering and leaving an area around the clock as they cross a virtual line. The camera supports

- Concurrent people counting at up to 3 entrances & exits
- On-screen count display
- People-flow reports

The people counting function can be used for simple **Entry and Exit Counting** in public places such as museums and theatres.

The camera also supports **Walk-in Rate Statistics** by precisely identifying whether a person is entering or passing by. This provides an effective index for assessing the attractiveness of stores in the street or in a mall.



Chain Stores



Museums



Queue detection

The DeepinView Camera tracks how many people are queuing and how long they have been waiting to inform arrangements that can increase customer experience. The camera supports

- Detection of up to 3 queues at a time
- Threshold setting of person-counts or wait time
- Notifications and reports

The queue detection function provides the flexibility to help retail and service businesses adjust the number of cashiers according to real-time queue data, so as to optimize their efficiency and elevate the customer experience.



Supermarkets



Airports



Heat mapping

The DeepinView Camera presents the covered area in varied colors, based on foot traffic. The deeper the color, the higher the foot traffic, which means there were more visitors or visitors stayed longer.

The heat mapping function helps managers of supermarkets and retail stores identify shelves and displays that attract more customers, evaluate promotion effectiveness, and arrange merchandise in a more strategic way.



Supermarkets



Perimeter protection

The DeepinView Camera automatically detects persons and vehicles in a monitored area and instantly notifies users of trespassing events. The camera supports

- Minimizing false alarms caused by animals, falling leaves, heavy rain, and other objects
- Built-in visual and auditory warnings
- Quick video retrieval by type

The perimeter protection function automates the protection of perimeters and helps users focus their security resources on real threats. Moreover, they can flexibly set the detection area and rules for customized protection.

Perimeters



● Hard hat detection

The DeepinView Camera distinguishes the presence of hard hats on individuals and automatically generates alarms when a violation is detected. The camera also identifies the color of the hard hat to provide more information for refined personnel management.

The hard hat detection function helps managers maintain a high level of safety in work environments where employees are at risk of injury from falling objects, debris, or other forms of impact.



● Facial recognition

The DeepinView Camera automatically recognizes a person's face through deep learning algorithms and mathematical patterns.

Complementing access control, the function can be used for **Stranger Detection** in areas where only authorized personnel are allowed to be present.

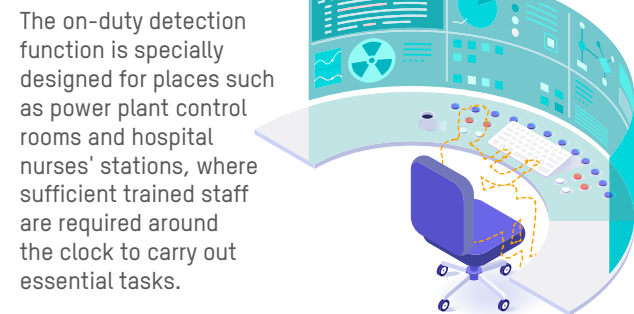
If an unfamiliar face is detected, the camera automatically triggers visual & auditory warnings and immediately notifies security personnel.



● On-duty detection

The DeepinView Camera automatically detects whether the required number of personnel are present in **mission-critical scenarios**. The camera supports

- Displaying the number of persons on duty
- Alarm triggering when the staff number is below the requirement



More Business-specific Functions with AIOP

Generic AI capabilities can't do much to address the application needs in specific business scenarios or workflows.

But here, DeepinView Cameras provide **structured metadata** of on-screen objects so that technology partners can customize intelligent applications based on their customers' unique needs.

Hikvision also helps end users train their algorithms for specific applications by providing an abundant set of models in the **AI Open Platform**. The trained algorithms can then be loaded directly onto DeepinView Cameras.

Contact Hikvision sales representatives any time for more details about the platform.

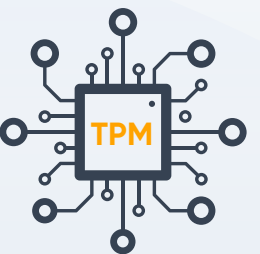


Cybersecurity and Data Protection

A **Trusted Platform Module (TPM)** is designed to secure network devices and used widely across the computer industry. A unique TPM is now built into select DeepinView Cameras, creating and storing cryptographic keys, monitoring changes to camera configurations, and providing protection against cyber attacks. It ensures that only authorized users have access to the video data.

The security of select DeepinView Cameras is certified by the **Common Criteria (CC)**, the authoritative body behind the widest recognition of secure and reliable IT products worldwide.

DeepinView Cameras also support the IEEE 802.1x, SRTP and SFTP protocols, security logs, and SD card encryption, along with other data protection



Towards a Greener Footprint

DeepinView Cameras are free of polyvinyl chloride (PVC) plastic, which is very difficult to break down in natural environments.

We also continually refine our product packaging by maximizing the use of eco-friendly, biodegradable materials.



Long-Term Performance Guaranteed

Hikvision's global after-sales service network and 5-year warranty for DeepinView Cameras provide reliable project maintenance and improve cost efficiency.



Product Showcase

Multi-Lens DeepinView Cameras

Superior low-light performance

DarkFighterX + **ColorVu** Technology



Excellent low-light performance

DARKFIGHTER + **ColorVu** Technology



- TandemVu technology
- Dual 1/1.8" sensors
- 140 dB WDR
- 5 streams to meet a wide variety of applications
- IP67 ingress protection
- IK10 vandal resistance
- Concurrent AI functions from dual video channels (switchable AI functions including ANPR in the channel for close-up views)
- Up to 1 TB SD, SDHC, or SDXC card

Switchable-Intelligence DeepinView Cameras

Professional low-light performance

DarkFighterS



DarkFighterS



- 1/1.8" large sensor
- 2.8-12 mm focal range
- 140 dB WDR
- P-Iris
- 5 streams to meet a wide variety of applications
- PTRZ and anti-reflection bubble for domes
- IP67 ingress protection
- IK10 vandal resistance
- 12 VDC power output
- -Y: Corrosion resistance with NEMA 4X certification
- Up to 1 TB SD, SDHC, or SDXC card

Essential low-light performance

DARKFIGHTER



DARKFIGHTER



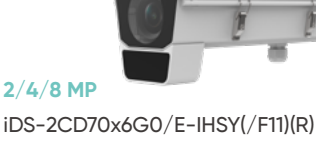
- 1/1.8" large sensor
- 2.8-12 mm or 8-32 mm focal range
- 140 dB WDR
- P-Iris
- 5 streams to meet a wide variety of applications
- Dual mics and a speaker for domes
- IP67 ingress protection
- IK10 vandal resistance
- 12 VDC power output
- -Y: Corrosion resistance with NEMA 4X certification
- Up to 1 TB SD, SDHC, or SDXC card

Essential low-light performance

DARKFIGHTER



DARKFIGHTER



- 1/1.8" large sensor
- 140 dB WDR
- P-Iris
- 5 streams to meet a wide variety of applications
- Flexible lens and accessory options
- Up to 1 TB SD, SDHC, or SDXC card

Essential low-light performance

DARKFIGHTER



DARKFIGHTER



- 4.7-118 mm ultra-long focal range
- 25 x optical zoom
- Built-in gyroscope to ensure stable image output
- 140 dB WDR
- P-Iris
- IP67 ingress protection
- IK10 vandal resistance
- -H: Built-in heater for the front window to ensure clear images in the snowy weather
- -Y: Corrosion resistance with NEMA 4X certification
- Up to 1 TB SD, SDHC, or SDXC card

Scenario-specific DeepinView Cameras

ANPR Cameras

Professional low-light performance

DarkFighterS



- 1/1.8" large sensor
- 2.8-12 mm focal range
- 140 dB WDR
- P-Iris
- 5 streams to meet a wide variety of applications
- PTRZ and anti-reflection bubble
- IP67 ingress protection
- IK10 vandal resistance
- 12 VDC power output
- -Y: NEMA 4X certification; supports the Wiegand interface
- Up to 1 TB SD, SDHC, or SDXC card

Essential low-light performance

DARKFIGHTER



- 1/1.8" large sensor
- 2.8-12 mm or 8-32 mm focal range
- 140 dB WDR
- P-Iris
- 5 streams to meet a wide variety of applications
- IP67 ingress protection
- IK10 vandal resistance
- 12 VDC power output
- -Y: NEMA 4X certification; supports the Wiegand interface
- Up to 1 TB SD, SDHC, or SDXC card

Essential low-light performance

DARKFIGHTER



- 1/1.8" large sensor
- 140 dB WDR
- P-Iris
- 5 streams to meet a wide variety of applications
- Flexible lens and accessory options
- Up to 1 TB SD, SDHC, or SDXC card

Education Sharing Camera

Essential low-light performance

DARKFIGHTER



- 1/1.8" large sensor
- 2.8-12 mm or 8-32 mm focal range
- 140 dB WDR
- P-Iris
- 5 streams to meet a wide variety of applications
- IP67 ingress protection
- IK10 vandal resistance
- 12 VDC power output
- Up to 1 TB SD, SDHC, or SDXC card

Dock Management Camera

Essential low-light performance

DARKFIGHTER



- 1/1.8" large sensor
- 2.8-12 mm focal range
- 140 dB WDR
- P-Iris
- 5 streams to meet a wide variety of applications
- IP67 ingress protection
- IK10 vandal resistance
- 12 VDC power output
- -Y: Corrosion resistance with NEMA 4X certification
- Up to 1 TB SD, SDHC, or SDXC card

Deeper Intelligence beyond the Edge

Hikvision DeepinView Series Cameras



Headquarters

No.555 Qianmo Road, Binjiang District,
Hangzhou 310051, China
T +86-571-8807-5998
overseasbusiness@hikvision.com



Hikvision



hikvision



HikvisionHQ



HikvisionHQ



Hikvision Corporate Channel

Distributor Information