



HikCentral Connect

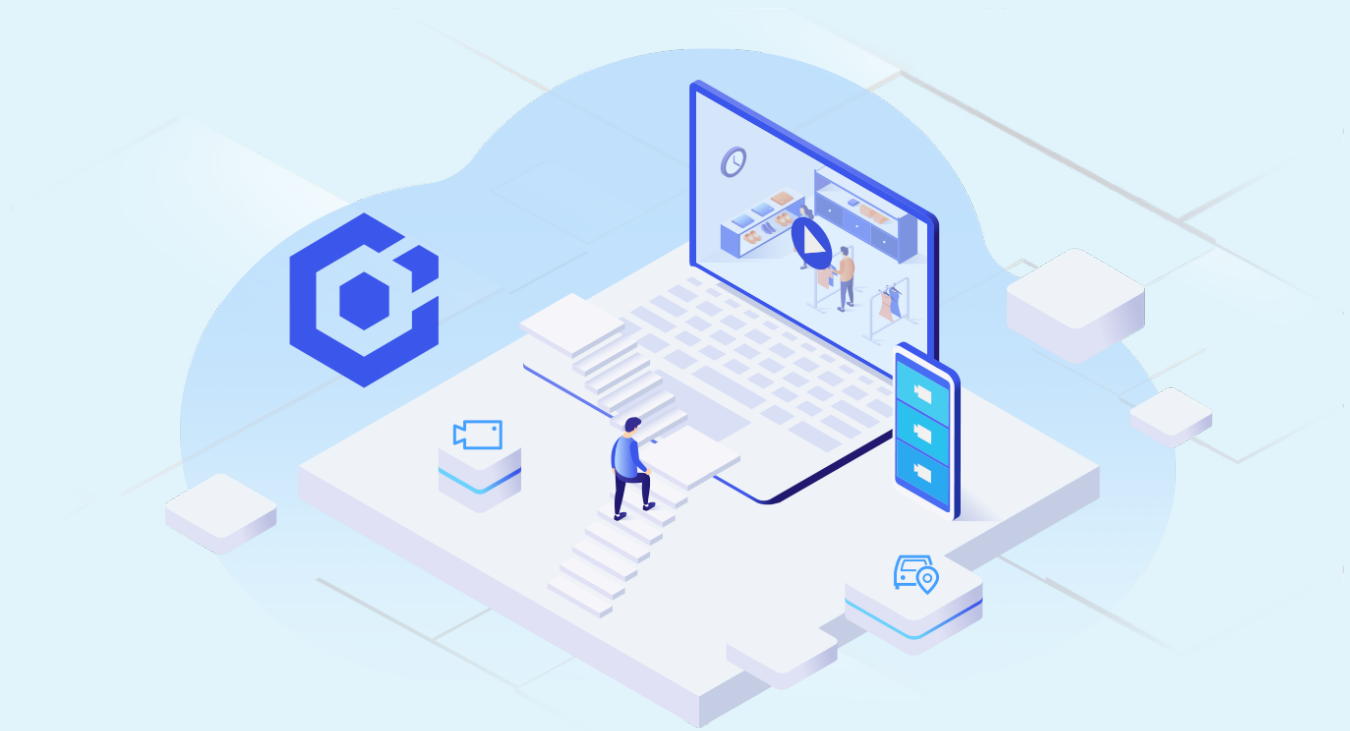
VSaaS Platform for Unified Security Management

Connected Security, Ready to Go

🌐 www.hikcentralconnect.com



HIKVISION®



What is HikCentral Connect?

HikCentral Connect – Hikvision's cost-effective VSaaS platform for unified security management with boosted flexibility and scalability – is ready to take your business to the next level! For property owners and business managers, it's never been easier to find a tailored security solution for your premises.

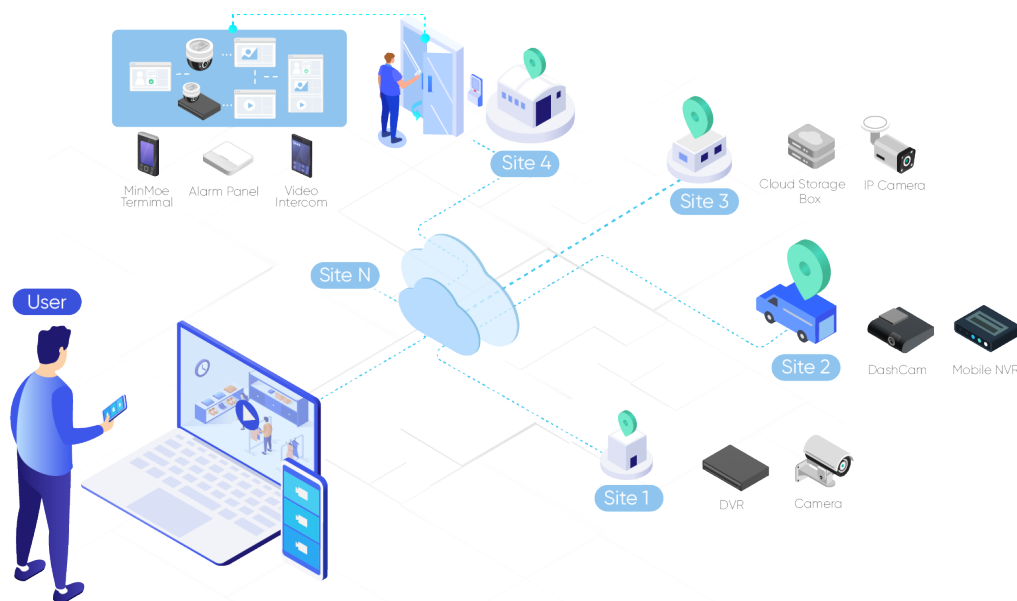
With HikCentral Connect, the power is in your hands to centralize management of multiple sites in the cloud, including video security and on-board monitoring, with more to come. Host them on the cloud with unified management to bring real convenience with guaranteed security in real time. Get the live video feed, play back footage, and enjoy remote control across multiple sites – all at your fingertips.

What are the Benefits?



Remote management

Manage and secure your premises from anywhere, anytime



Business owners can manage multiple devices or sites via the cloud with a single platform and intuitive, user-friendly interfaces. With cloud-based hosting, you can take complete control of the on-site security at multiple sites any time, from anywhere. Operating remotely via laptop or mobile phone, get real-time monitoring views, play back video footage, and receive alarm notifications immediately when abnormal conditions are detected.

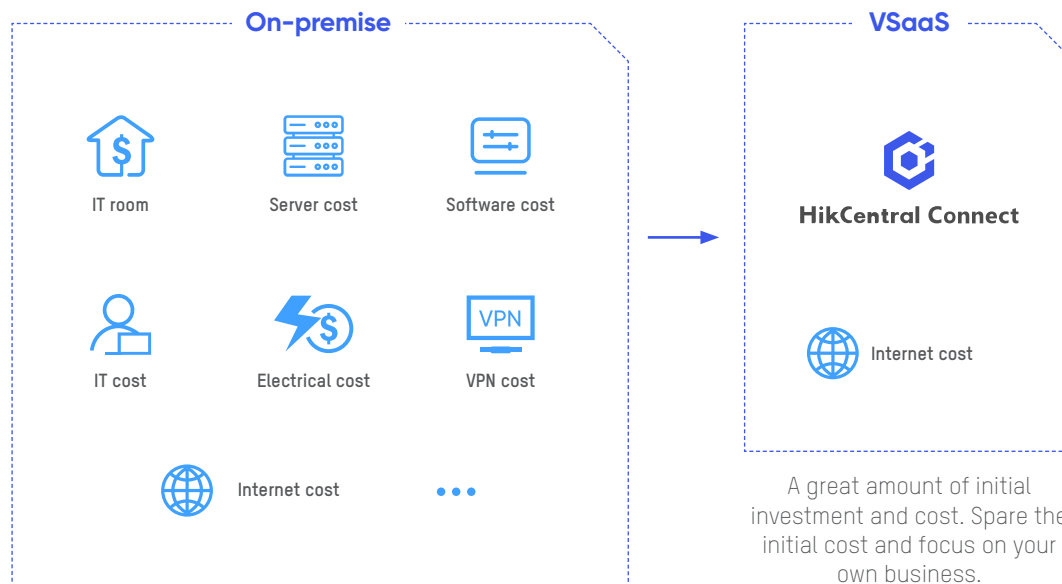


Budget Friendly

Enhance business operations with reduced costs and environmental impact

Instead of purchasing and maintaining high-cost servers, you can manage the entire system intelligently and react with real-time, informed decisions – in the palm of your hand. With cloud-hosting infrastructure, you will minimize your upfront investments and labor costs instead of juggling a bunch of servers.

What's more, hosting in the cloud means maximum utilization of infrastructure and bandwidth resources, which is more friendly to the environment by reducing your carbon emissions.



Highly Scalable

Scale your security system easily as your business grows

Lightweight and easy to scale, the platform grows in scope and size as your business grows. Various types of systems – video security, intrusion alarms, access control, video intercom, and more – converge, addressing flexible security needs and creating efficient business work-flows. The pay-as-you-go subscription mode allows you to add or remove devices in stages, adjust subscription services, and pay for only what you actually use.





Easy to Deploy and Maintain

A powerful platform for simplified deployment and maintenance

With HikCentral Connect, all the infrastructure is in the cloud. Quickly deploy security projects without the need to install or maintain a bunch of servers. What's more, there's no more configuration for port forwarding or building VPNs.

On-site devices and your system can be managed remotely by professional service providers upon your explicit consent and authorization. Rest assured knowing your service provider is protecting the system with proactive health monitoring, and even resolves problems remotely.



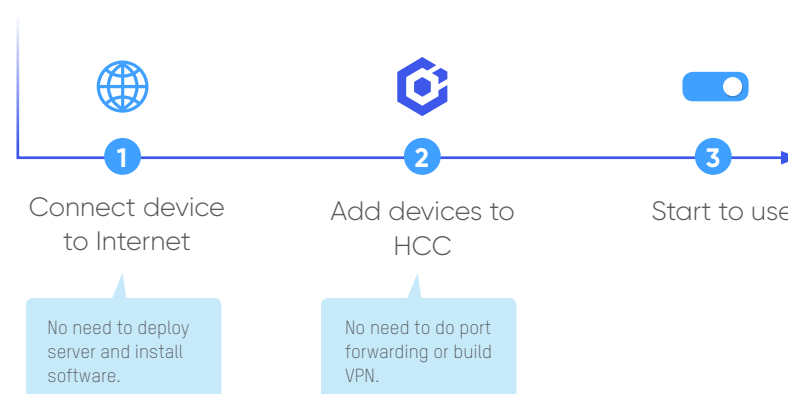
Secure and Reliable

Feel safer with a secure & trusted solution

Enjoy peace of mind with professionally managed services as your system is hosted in the cloud. No need to worry about hardware risks and system compatibility since it is always up-to-date. And you can rest assured with safeguarded architecture and encrypted protections.

VSaaS

Just connect to Internet and add devices, then start to use!



Top-Level Guaranteed Security

HikCentral Connect employs industry-leading standards and protocols for maximum security and reliability.

Powerful security methods and protocols include:

- HTTPS/SSL encryption for data-in-transit prevents interception or tampering
- Advanced RSA, AES and TLS encryptions ensure secure data transmission between the cloud and connected devices
- Data gets stored in the cloud in Amazon Web Services' S3 data storage via AES encryption
- Strict permissions control various roles, and only administrators can access and manage the system

Certifications

Multiple industry-leading standards and protocols



Secure data encryption

HTTPS/TLS
AES /RSA
P2P technology



Trustable cloud services

World-class AWS cloud service,
reliable and stable



High server availability

Cloud-based deployment removes
friction involved in setting up and
maintaining on-site VMS systems



Professional support

Professional Hikvision team
dedicates for the smooth-running
and always up-to-date platform



Open system architecture allows easy and convenient integration

HikCentral Connect OpenAPI

The HikCentral Connect OpenAPI is an API platform that comes with the HikCentral Connect cloud services. Easy to use for advanced security, HikCentral Connect OpenAPI comes with abundant functionality & flexibility to help partners design and integrate their own applications.



What are the integration benefits



Quick & easy integration

- Easy-to-use REST API
- WASM (JSDecoder) Develop Kit for Web non-plugin solution



Plug & play connectivity

- Connect Hikvision devices to your cloud within seconds thanks to P2P technology
- No need for port mapping or configuring static IP address for devices



Cost-effective solution

- No need to deploy streaming media server, video storage server, or expanded bandwidth on your cloud
- No additional cost for OpenAPI license



Increased marketing exposure

- Share joint-value solutions via Hikvision Technology Partner Portal and increase your brand awareness

22

Manage & Secure with a Tap

Various, modular applications including video security, on-board monitoring, video intercom, access control and more, converge to address virtually any security need. You can create more efficient work-flows and add new applications as your business scope expands.

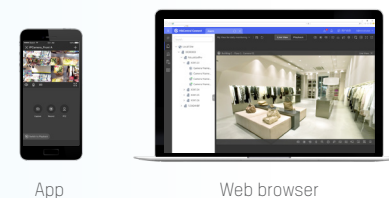
Video security



Easy monitoring

Monitor multiple sites from anywhere, at any time via the mobile app or web browser, and conveniently check the live feed and play back footage.

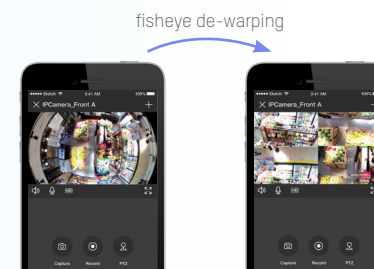
Monitor any time,
anywhere



Convenient live view
/ playback



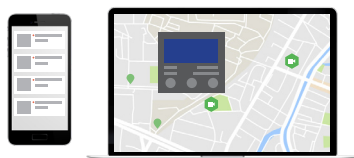
Flexible controls
in your hand



Easy to manage alarms

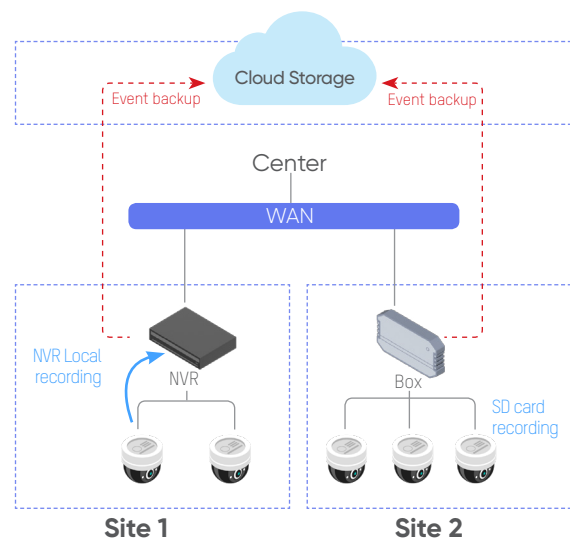
Receive event video clips on the mobile app in real time at any time and from anywhere, ensuring quick response to emergencies; process alarm notifications on the portal in a timely manner in monitoring center scenarios

Respond to alarms any time, anywhere



Safe storage

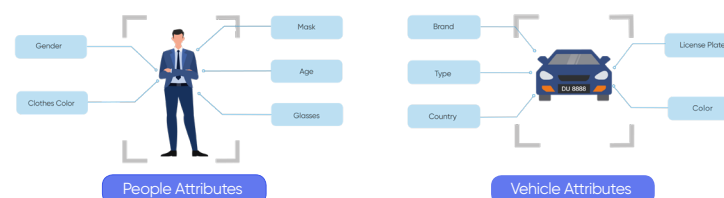
Store data reliably with backup for both local video and key-area video on the cloud



Smart video search

Archive event video clips on cloud servers and download and share them conveniently; the latest version supports smart and quick video searches by persons and vehicles

Search videos with attributes, across multiple sites



Playback immediately



Quickly playback searched videos



Intelligently classify videos by People / Vehicle

Archive as evidence



- Archive videos to the cloud
- Online playback remotely
- Download to PC or Phone
- Share with other people

On-board monitoring

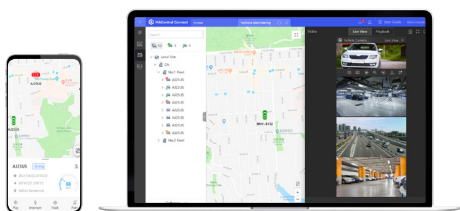


Real-time remote vehicle monitoring empowers quick response and includes GPS tracking, remote video playback, abnormal driving events like speeding, swerving, and sharp turns, and more

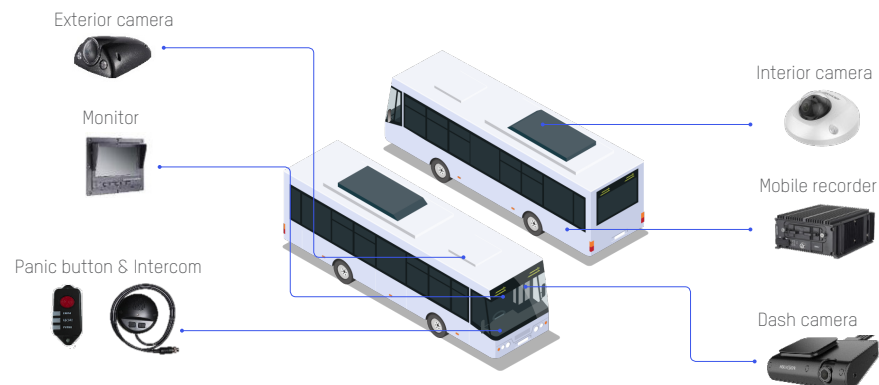
Get reliable archive management by enabling real-time event recording, scheduled video backup, and evidence management

Fused data from various on-board sensors effectively detect abnormal driving such as smoking and fatigued driving, as well as intelligent driver protections with early warnings for collisions, excessive speeds, etc.

Customized reports for enhanced operational efficiency and insights on vehicle driving conditions and driver performance



- Vehicle remote monitoring & tracking
- Alarm notification and handling
- Evidence sharing
- Operation Analysis
- ...



Video intercom



Get two-way audio intercom even without an indoor station as you can call directly from the door station to the mobile app

Enjoy smart and flexible intercom management as you can receive calls on your mobile phone and remotely grant access to visitors

Centrally manage all intercom devices in various communities and regions



Installers: Lower Cost & More Convenient

- No need of installing indoor stations
- No need to deploy wires



Property management staff: Lightweight Design & Easy to Deploy / Use

- Remote Management
- Third-party integration



Residents: Mobile friendly & Safe & Conveniently

- Cloud-based Intercom
- Remote door opening service

Access control



Touch-free access using mobile credentials on your smart phone instead of physical cards

Secure every door with full-scale visibility via seamless integration with video security and alarm systems, enabling quicker responses to emergencies

Remotely manage unlimited numbers of doors at multiple sites, including authorizations, video verifications, unlocking, and more



Alarm detection



Easily build and manage your professional alarm system via remote configuration and operation

Centrally manage various alarm sources such as IP cameras, mobile devices, and alarm panels, with flexible linkage

Get real-time alerts for all kinds of alarms with related videos and locations automatically linked when emergencies are detected, even on the go

Rest assured with comprehensive protections as the platform supports integrating a variety of professional sensors – passive infrared, temperature measurement, smoke detection, and more

Common Application Scenarios

HikCentral Connect can be widely used across enterprise and business scenarios with great flexibility, scalability, and economy, especially for businesses with multiple branches and in those who lack an infrastructure maintenance team.

Empowering business owners who manage multiple sites remotely



Distribution Center



Chain Stores

For those businesses like distribution centers, chain stores, etc., managing several branches at once can be a nightmare, especially when they are spread out with diverse and complicated setups. Here, it is very difficult to maintain and operate every device from a centralized point and handle alarms in time to prevent losses. And managers can also be faced with high maintenance costs for physical facilities and hardware. Let HikCentral Connect remedy these problems for you.



HikCentral Connect is your ideal choice, offering:

- Multi-site management through a unified online platform
- Remote management via app or portal
- Asset-light, without initial server investment
- Pay for only what you need right now

Helping businesses focus on development without the need to maintain an IT infrastructure

Businesses in the initial or expansion stages of development might be faced with limited budgets to build an IT team that handles daily infrastructure maintenance. On top of that, it is difficult and time-consuming for business owners and security staff to learn a new professional security system.



Retail Stores / QSRs



Office Buildings



HikCentral Connect is your ideal choice, offering:

- Cloud deployment without local servers or complex network configuration
- Devices that go online immediately after connecting to the Internet
- An app and portal, so everyone can easily get started without long tutorials

How to Use HikCentral Connect

HikCentral Connect immediately provides free capabilities upon activation of the system. For further value-added services, you can contact your service provider for a free trial and purchase other service packages for more advanced functions.

Free Services

Available upon HikCentral Connect account activation at no extra cost

8 Video Channels
10 Mobile Devices
25 Persons
2 Doors
2 Rooms

Monthly or Annual Subscription Services

Video

1 Channel / Month
1 Channel / Year

Cloud Storage Video

1 Channel / 7 days / Month
1 Channel / 7 days / Year
1 Channel / 30 days / Month
1 Channel / 30 days / Year

Mobile Monitoring

1 Device / Month
1 Device / Year

Alarm Detection

1 Alarm input / Month
1 Alarm input / Year

Access Control

50 Persons / 1 Door / Year
200 Persons / 2 Doors / Year
500 Persons / 6 Doors / Year

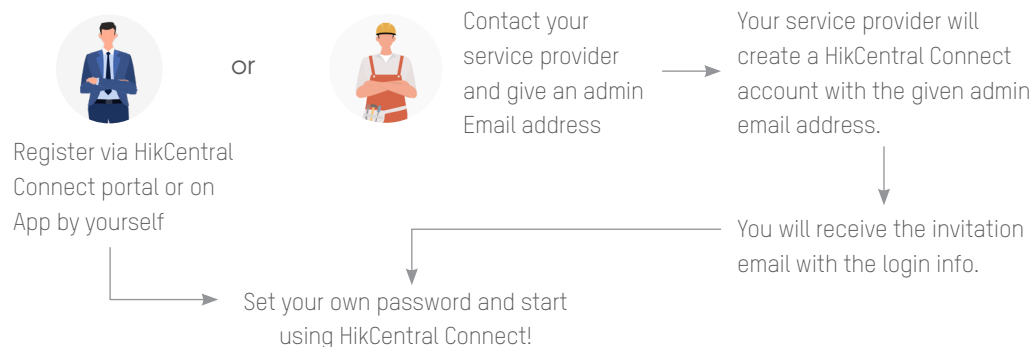
1 Door / 0 person / Year
1 Person / 0 Door / Year

Video Intercom

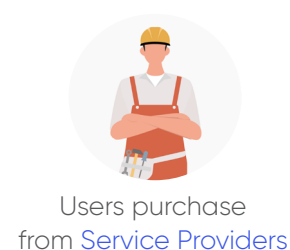
1 Room / Year
1 Room / 3 Years

1 How to get a free trial

To get a free trial of HikCentral Connect, users can

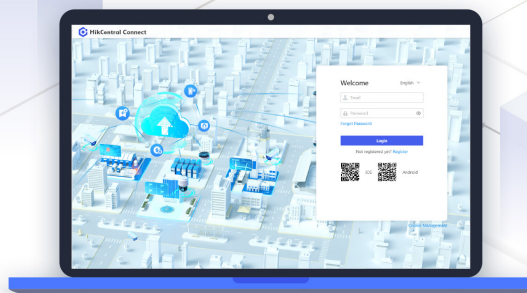


2 How to purchase and renew subscription services

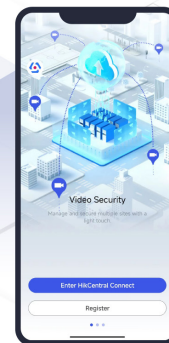


- To enjoy more advanced services of HikCentral Connect, you can make orders to or renew service from your service provider
- Your service provider will select and activate, or renew the services

Try it
Now!

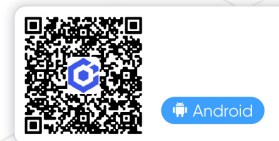
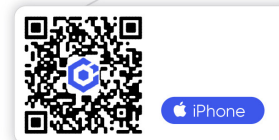


HikCentral Connect Portal
www.hikcentralconnect.com



HikCentral Connect App

Please download the latest version
for the best experience.



HIKVISION®



Follow us on social media to get the latest product and solution information



HikvisionHQ



hikvisionhq



Hikvision_Global



HikvisionHQ



Hikvision



Hikvision Corporate Channel