

# HUGE PANORAMAS, INCREDIBLE VIEWS

Hikvision Panovu Series Network Camera



# What Is The Panovu Camera?

Public plazas, sports arenas, airports, busy traffic intersections – monitoring such large and busy areas today requires security cameras with more and greater requirements than what has traditionally been available. Conventional cameras were not designed for such high-demand installations, and no one wants to fit dozens of new cameras into their budget. More cameras and video channels lead to higher costs and install time, not to mention more difficult system integration.

In very large settings, security personnel need to see more with just one camera – not just a panoramic image, but zoomed-in, detailed views as well.

With that in mind, Hikvision designed the PanoVu Series – all-in-one cameras that capture both excellent panoramas and close-up details. Panoramic images are captured with multiple sensors, rendering 180- and 360-degree panoramic imaging with real-time ultra-HD resolution. The PanoVu Series enhances security system integration, image quality, and cost-efficiency.

The PanoVu product family features high definition panoramic views, as well as ColorVu technology for clear imaging in extremely dark environments. Along with a wide array of smart functions, the PanoVu cameras also utilize AR technology, making advanced video analysis even more efficient. And with one data cable and a power supply, PanoVu cameras guarantee cost-effective installation, along with a user-friendly UI for easy and flexible operation.



Panoramic Views



ColorVu Technology



Smart Functions



AR Technology



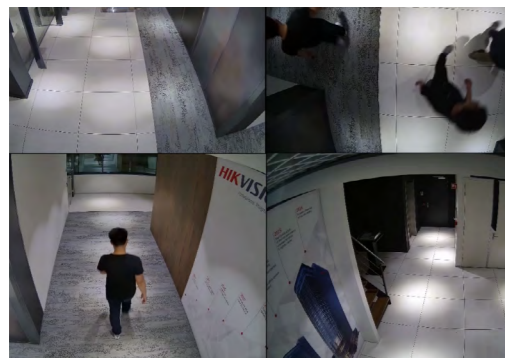
Cost-effective Installation

## Panoramic Views

Combining several built-in horizontal lenses with PTZ power, one PanoVu camera can capture panoramic images as well as close-up images. Their high-performance lenses present clear, high-resolution, and detailed images.

Each PanoVu camera provides panoramic views using image stitching or quad-directional channels. For example, embedded with an “all-in-one” design, a single product serves as a system that enables seamless image stitching for fluid 180- to 360-degree coverage that’s void of blind spots – ideal for wide open areas.

Equipped with four independently adjustable lenses in one housing, the PanoVu cameras also provide indoor scenarios with security in every direction. Four channels deliver an all-around view, consistently focusing on key regions.



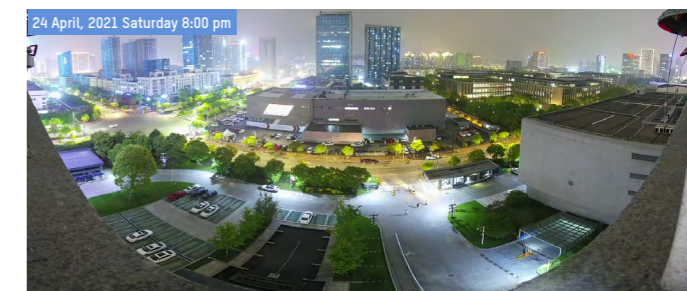
Quad-directional Channels



Image Stitching

## ColorVu Technology

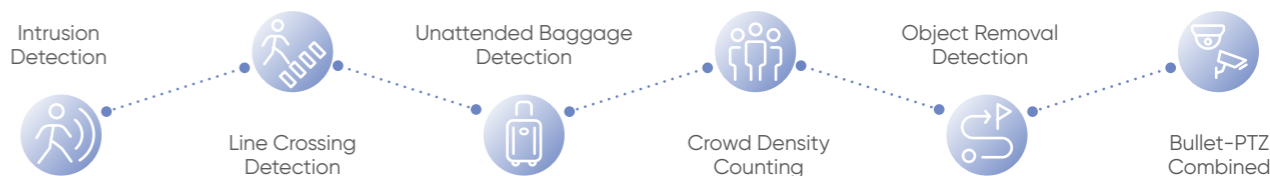
The latest panoramic-lens PanoVu cameras are specially equipped with Hikvision’s advanced ColorVu low-light imaging technology, featuring a large F1.0 aperture and high-performance sensors. PanoVu cameras guarantee excellent effects in low-lux conditions all day long and rendering rich color images even at night.



## Smart Functions

With advanced video analysis and multi-target tracking algorithms selected, PanoVu Cameras also feature a wide range of smart functions in panoramic mode, including automated detection of intrusion, line crossing, unattended baggage, crowd density, and object removal, as well as bullet-dome camera linkage.

A pioneer in the industry, Hikvision designed bullet-PTZ cameras for automatically 3D positioning, activated by just clicking on the target or choosing a region at any position in the panoramic image. The PTZ camera will adjust the focal direction and zoom to the exact place for close-up images. Even more, a crowd density alarm, based on three levels of human density counts, helps to easily manage public safety.



## Augmented Reality Technology (AR)

AR monitoring not only provides the full coverage of a scene, but also integrates multidimensional information into video imaging to achieve an effective combination of real-world and business data.



## Cost-effective Installation

With PanoVu equipment, users will enjoy simple and time-saving installation and maintenance – comparable to installing a dome camera, with one data cable and a power supply. It features handy functions and options along with a user-friendly UI to enable flexible and easy operation. Users get panoramas in ultra high resolution, not missing a single detail from the big picture. They can also zoom in to the center to see close-up details just by clicking on the image.



## Application Scenarios

With intelligent and powerful features, the PanoVu Series Cameras can be used extensively in places like airports, transit stations, gymnasiums, scenic ports, and public squares needing expansive video security coverage.



## Solution Topology

With intelligent and powerful features, the PanoVu Series Cameras can be used extensively in places like airports, transit stations, gymnasiums, scenic ports, and public squares needing expansive video security coverage.



# Product Family

## DS-2CD6984G0-HIS (2.8mm)

180° Stitched 32 MP PanoVu Camera



1/1.8" Progressive scan CMOS  
Max. resolution 8160 x 3616 @ 30 fps in panorama display mode  
Panoramic field of view: Horizontal 180°, vertical 95°  
Multiple display modes available  
Panorama, original, panorama + ePTZ, and divided panorama  
Four IR LEDs, up to 20 m IR distance  
H.265, H.264  
BLC, 3D DNR, HLC, defog, EIS (only in original mode)  
Audio and alarm I/O, optional  
Flexible power supply options  
IP67, IK10

## DS-2CD6944G0-HIS (2.8mm)

180° Stitched 16 MP PanoVu Camera



1/1.8" Progressive Scan CMOS  
Max. resolution 4800 x 2688 @ 30 fps in panorama display mode  
Multiple display modes available: Panorama, original, panorama + ePTZ, and divided panorama  
Up to 20 m IR distance  
H.265+, H.264+  
BLC, 3D DNR, HLC, defog, EIS (only the original mode supports)  
Audio and alarm I/O  
IP67, IK10

## DS-2CD6924G0-HIS (2.8mm)

180° Stitched 8 MP PanoVu Camera



180° Image splicing to present all scenes covered by the camera  
Built-in heater, ultra-low temperature start up - down to -40  
Water and dust resistant (IP67) and vandal proof (IK10)  
Smart human density counting and public behavior analysis to increase public area safety

## DS-2CD6D54FWD-IZHS (2.8-12mm)

Quad-Directional Varifocal PanoVu Camera



1/2.7" Progressive Scan CMOS  
2560 x 1920 @ 25 fps  
Field of view  
Horizontal 30° to 101°  
Vertical 22.4° to 73°  
Diagonal: 37° to 137°  
H.265, H.264, H.265+, H.264+  
Fiber optic transmission, optional  
10 m to 30 m IR range  
IP67, IK10  
Four flexible lenses  
Six behavior analyses, four exception detections, face detection

## DS-2CD6D24FWD-IZHS (2.8-12mm)

Quad-Directional Varifocal PanoVu Camera



1/2.7" Progressive Scan CMOS  
1920 x 1080 @ 30 fps  
Field of view  
Horizontal 30° to 96.3°  
Vertical 17° to 54°  
Diagonal: 34° to 121°  
H.264, H.264+, H.265, H.265+  
Fiber optic transmission, optional  
10 m to 30 m IR range  
IP67, IK10  
Four flexible lens  
Six behavior analyses, four exception detections, face detection

## DS-2CD6D54G1-IZS (2.8-8mm)

Quad-Directional Varifocal PanoVu Camera



Four adjustable lenses in one camera cover up to a 360° field of view, eliminating blind areas; tilt angle can be adjusted  
Up to 5 MP lenses, capturing clear images and more details; can be displayed on a video wall  
True 120 dB WDR technology means clear imaging against strong back light  
Water and dust resistant (IP67) and vandal proof (IK10)  
3D DNR technology delivers clean and sharp images  
-S: Audio and alarm interface available

## DS-2DP3236ZIXS-D/440

360° Stitched 32 MP PanoVu Camera with PTZ



**Panoramic Camera**  
Eight 1/1.8" 4 MP progressive scan CMOS  
Up to 2 x 5520 x 2400 resolution @ 30 fps  
Field of view: Horizontal 2 x 180°; vertical: 85°  
Min. illumination  
Color: 0.0005 Lux @ (F1.6, AGC On)  
B/W: 0.0001 Lux @ (F1.6, AGC On)  
Supports people density detection in panoramic channel

**Tracking PTZ Camera**  
1/1.8" 4 MP progressive scan CMOS  
Up to 2560 x 1440 resolution @ 30 fps  
Pan and tilt range: 360° Pan, -15° to 90° Tilt  
Min. illumination  
Color: 0.0005 Lux @ (F1.2, AGC On)  
B/W: 0.0001 Lux @ (F1.2, AGC On)  
0 Lux with IR  
40x Optical Zoom, 16x Digital Zoom  
WDR: 120 dB  
IR distance: 250 m

## DS-2DP2427ZIXS-DE/440

270° Stitched 24 MP PanoVu Camera with PTZ



**Panoramic Camera**  
Six 1/1.8" 4 MP progressive scan CMOS  
Up to 8160 x 2400 resolution @ 30 fps  
Field of view: Horizontal 270°; vertical: 85°  
Min. illumination  
Color: 0.0005 Lux @ (F1.6, AGC On)  
B/W: 0.0001 Lux @ (F1.6, AGC On)  
Supports people density detection in panoramic channel

**Tracking PTZ Camera**  
1/1.8" 4 MP progressive scan CMOS  
Up to 2560 x 1440 resolution @ 30 fps  
Pan and tilt range: 360° Pan, -15° to 90° Tilt  
Min. illumination  
Color: 0.0005 Lux @ (F1.2, AGC On)  
B/W: 0.0001 Lux @ (F1.2, AGC On)  
0 Lux with IR  
40x Optical Zoom, 16x Digital Zoom  
WDR: 120 dB  
IR distance: 250 m

## DS-2DP1618ZIXS-DE/440

180° Stitched 16 MP PanoVu Camera with PTZ



**Panoramic Camera**  
Four 1/1.8" 4 MP progressive scan CMOS  
Up to 5520 x 2400 resolution @ 30 fps  
Field of view: Horizontal 180°; vertical: 85°  
Min. illumination  
Color: 0.0005 Lux @ (F1.6, AGC On)  
B/W: 0.0001 Lux @ (F1.6, AGC On)  
Supports people density detection in panoramic channel

**Tracking PTZ Camera**  
1/1.8" 4 MP progressive scan CMOS  
Up to 2560 x 1440 resolution @ 30 fps  
Pan and tilt range: 360° Pan, -15° to 90° Tilt  
Min. illumination  
Color: 0.0005 Lux @ (F1.2, AGC On)  
B/W: 0.0001 Lux @ (F1.2, AGC On)  
0 Lux with IR  
40x Optical Zoom, 16x Digital Zoom  
WDR: 120 dB

## DS-2PT5326IZ-DE

Triple-Directional PanoVu Camera with PTZ



**Panoramic Camera**  
Three 1/2.8" progressive scan CMOS  
Up to 3 channels of 1920 x 1080 @ 30 fps  
Min. illumination:  
Color: 0.005 Lux @ (F1.6, AGC On)  
B/W: 0.001 Lux @ (F1.6, AGC On)  
0 Lux with IR  
Field of view: Horizontal: 3 x 80.7°; vertical: 43.5°  
Up to 30 m IR radius

**PTZ Camera**  
1/2.8" progressive scan CMOS  
Up to 1920 x 1080 @ 30 fps resolution  
Min. illumination:  
Color: 0.005 Lux @ (F1.6, AGC On)  
B/W: 0.001 Lux @ (F1.6, AGC On)  
0 Lux with IR  
10x optical zoom, 8x digital zoom  
Up to 50 m IR distance

## DS-2PT3326IZ-DE3

Triple-Directional PanoVu Mini Camera with PTZ



**Panoramic Camera**  
Three 1/2.8" progressive scan CMOS  
3 ch's of 1920 x 1080 @ 30 fps resolution  
Min. illumination:  
Color: 0.05 Lux @ (F2.0, AGC On)  
B/W: 0.01 Lux @ (F2.0, AGC On)  
0 Lux with IR  
Supports H.265 video compression  
Field of view: Horizontal: 128.5° x 3

**PTZ Camera**  
1/2.8" progressive scan CMOS  
Up to 1920 x 1080 @ 30 fps resolution  
Min. illumination:  
Color: 0.05 Lux @ (F2.0, AGC On)  
B/W: 0.01 Lux @ (F2.0, AGC On)  
0 Lux with IR  
Supports H.265 video compression  
4x optical zoom, 8x digital zoom

## DS-2PT3122IZ-DE3

Single-Directional PanoVu Mini Camera with PTZ



**Panoramic Camera**  
1/2.8" progressive scan CMOS  
Up to 1920 x 1080 @ 30 fps resolution  
Min. illumination:  
Color: 0.05 Lux @ (F2.0, AGC On)  
B/W: 0.01 Lux @ (F2.0, AGC On)  
0 Lux with IR  
Supports H.265 video compression  
Field of view: Horizontal: 128.5°

**PTZ Camera**  
1/2.8" progressive scan CMOS  
Up to 1920 x 1080 @ 30 fps resolution  
Min. illumination:  
Color: 0.05 Lux @ (F2.0, AGC On)  
B/W: 0.01 Lux @ (F2.0, AGC On)  
0 Lux with IR  
Supports H.265 video compression  
4x optical zoom, 8x digital zoom

## DS-2DP0818ZIXS-DE/440

180° Stitched 8 MP PanoVu Camera with PTZ



**Panoramic Camera**  
Four 1/1.8" 2 MP progressive scan CMOS  
Up to 4096 x 1800 resolution @ 30 fps  
Field of view: Horizontal 180°; vertical: 85°  
Min. illumination  
Color: 0.0005 Lux @ (F1.6, AGC On)  
B/W: 0.0001 Lux @ (F1.6, AGC On)  
Supports people density detection in panoramic channel

**Tracking PTZ Camera**  
1/1.8" 4 MP progressive scan CMOS  
Up to 2560 x 1440 resolution @ 30 fps  
Pan and tilt range: 360° Pan, -15° to 90° Tilt  
Min. illumination  
Color: 0.0005 Lux @ (F1.2, AGC On)  
B/W: 0.0001 Lux @ (F1.2, AGC On)  
0 Lux with IR  
40x Optical Zoom, 16x Digital Zoom  
WDR: 120 dB  
IR distance: 250 m

## DS-2PT3306IZ-DE3 (2mm)

Triple-Directional PanoVu Mini Camera



Three 1/2.8" progressive scan CMOS  
Up to 3 ch of 1920 x 1080 @ 30 fps resolution  
Min. illumination:  
Color: 0.05 Lux @ (F2.0, AGC On)  
B/W: 0.01 Lux @ (F2.0, AGC On)  
0 Lux with IR  
Field of view: Horizontal 3 x 128.5°; vertical FOV: 75.7°  
Up to 10 m IR radius

## DS-2CD6D54G1-ZS/RC (2.8-8mm)

Quad-Directional Varifocal PanoVu Camera



Four adjustable lenses in one camera cover up to a 360° field of view, eliminating blind areas; tilt angle can be adjusted  
Up to 5 MP lenses, capturing clear images and more details; can be displayed on a video wall  
In-ceiling mounting makes the fisheye camera unnoticeable and user friendly  
True 120 dB WDR technology means clear imaging against strong back light  
Water and dust resistant (IP67) and vandal proof (IK10)  
3D DNR technology delivers clean and sharp images  
Audio and alarm interface available

## DS-2CD6D52G0-IHS(4mm) DS-2CD6D82G0-IHS(4mm)

Dual-Directional PanoVu Camera



1/2.7" Progressive Scan CMOS  
Dual lenses  
Flexible lens options:  
P: -90 to 90°  
T: 0 to 60° (2.8 mm), 0 to 70° (4/6 mm)  
R: 0 to 355°  
H.264, H.264+, H.265, H.265+  
DS-2CD6D52G0-IHS: 2560 x 1920 @ 30 fps  
DS-2CD6D82G0-IHS: 3840 x 2160 @ 24 fps  
120 dB WDR  
Built-in micro SD/SDHC/SDXC card slot, up to 256 GB  
IP67, IK10

# Recommended Nvr

## DS-9600NI-I8 Series NVR



H.264/H.264+/H.265/H.265+ video formats  
16/32/64 channels of IP camera inputs  
Decoding capacities: One channel @ 32 MP; two channels @ 12 MP; 16 channels @ 1080p  
8 SATA interfaces for HDD connection  
HDD hot swapping with RAID 0/1/5/6/10

# HUGE PANORAMAS, INCREDIBLE VIEWS

Hikvision Panovu Series Network Camera

Distributed by



**HIKVISION**

Follow us on social media to get the latest product and solution information



HikvisionHQ



Hikvision



HikvisionHQ



Hikvision\_Global



hikvisionhq



Hikvision Corporate Channel



[www.hikvision.com](http://www.hikvision.com)