

## Body-Worn Camera Solution

Protect Your Security Officers  
& Streamline Incident Management

HIKVISION®

## Body-Worn Camera Solution

Protect Your Security Officers  
& Streamline Incident Management



[www.hikvision.com](http://www.hikvision.com)  
[support@hikvision.com](mailto:support@hikvision.com)



Distributor Address



The diagram illustrates the Smart Patrol System architecture, showing the flow of data and control between various components:

- Top Row (Device Functions):** SOS, Audio recording, Picture capture, Video recording, On/Off.
- Incident Capture:** Security officers on duty when an incident takes place. Evidence capture on the go.
- Central Device:** A ruggedized tablet or camera unit with a large lens and multiple lights.
- Command Center:** A workstation with a monitor displaying a grid of camera feeds and a red hexagonal icon. A person is seated at the desk, interacting with the system.
- Data Storage:** Data storage at the dock station, including a server rack and a storage unit.

**Flow and Data:**

- Security officers capture evidence on the go.
- Data is transferred and stored at the dock station.
- The command center monitors the incident in real-time and makes a quick response.

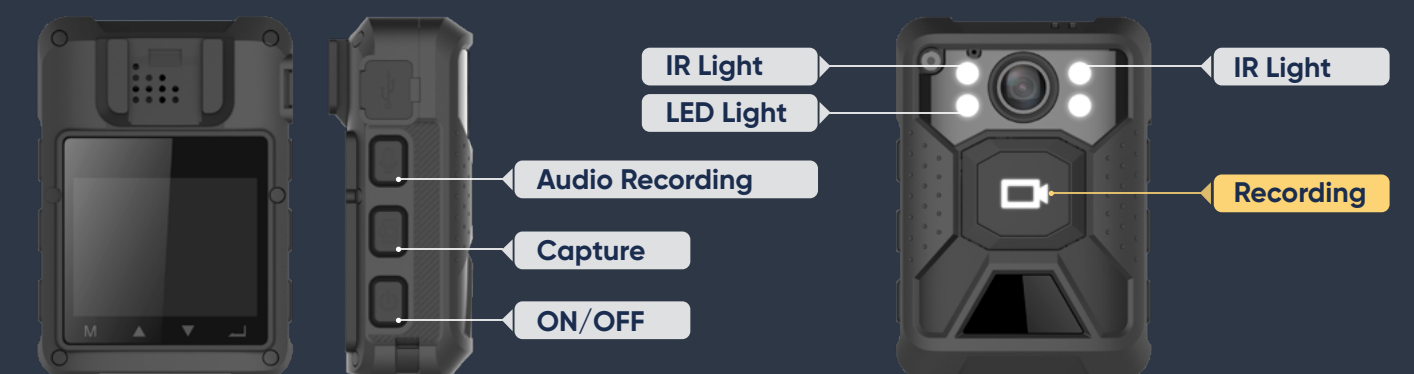
# Reliable

## Performance on the Go

Tested and proven countless times in the field, Hikvision's Body Worn Cameras are tailored for the rigors of duty. They are compact and easy to use, resisting dust and rain with water-proof and drop-proof exteriors. The robust design ensures stable video recording even when users are in adverse environments or the midst of action.



Hikvision's Body Worn Cameras feature a large recording button on the front and, on the side, buttons to switch to mute mode, tape audio clips, send out alarm signals, and activate other handy functions. All contribute to easier one-handed operation on the move – even with gloves on.



# Situation Awareness in the Center

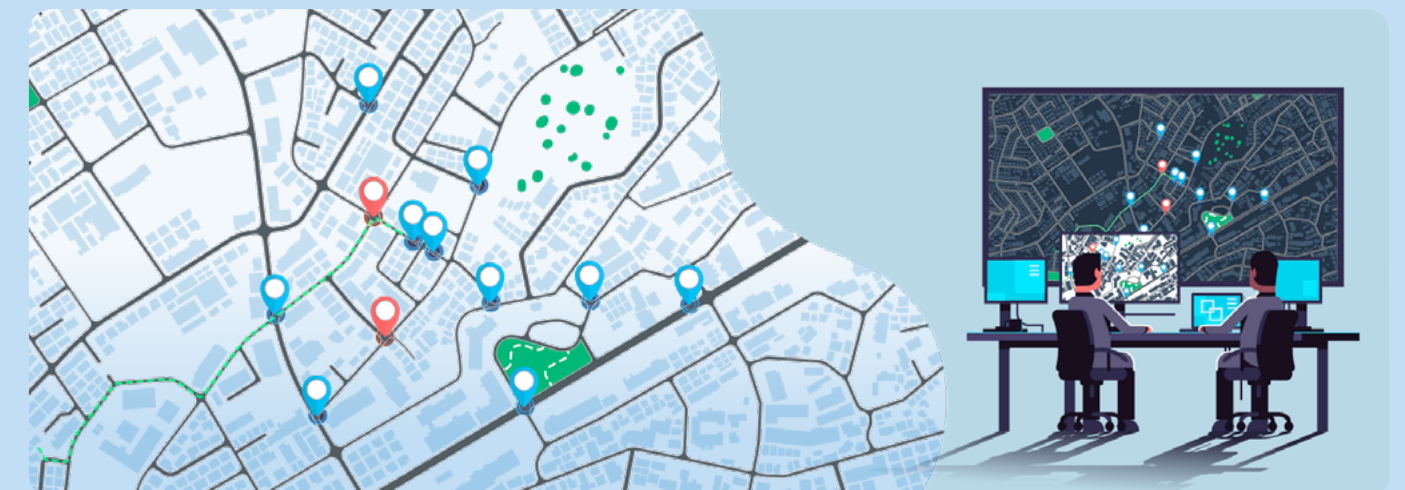
## Real-Time View of Enforcement with HikCentral Platform

Staff at the command center can instantly get a video stream of the security staff on the ground.



## Location Visualization

The GPS module in Hikvision's Body Worn Cameras uploads each user's location data to the command center in real time, so that command personnel can determine their location and patrol route.

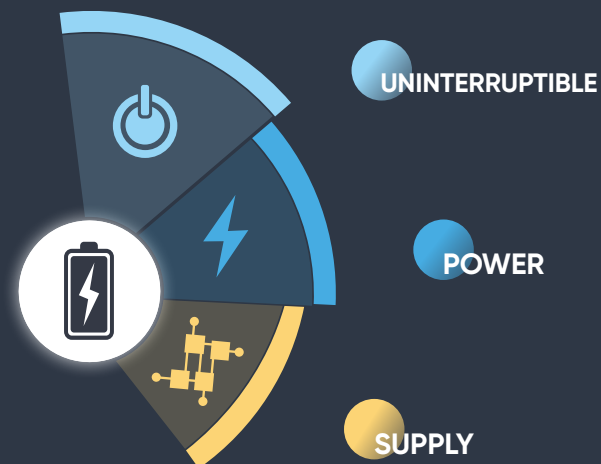


### Alarm

## Calling for Backup

In case of emergency, security staff can press the Alarm button, and immediately trigger the emergency alarm to the control center.

Note: Button design varies for different models.



## Extra-Long Recording Time

Hikvision's Body Worn Cameras record high-definition video for up to 12 hours on a single charge. Shift-long recording means longer connection time and better protection. Moreover, the rechargeable battery can be detached and changed on the go (on select models), so users won't run out of power even on extended shifts.

## Flexible Mounting Options

Hikvision's Body Worn Cameras go with a variety of plastic and metal accessories for chest and shoulder mount, perfectly securing the camera to a uniform.



Plastic Clip



Metal Clip



Klick Fast



Magnetic Clip



Chest Harness



# Efficient & Secure Data Management

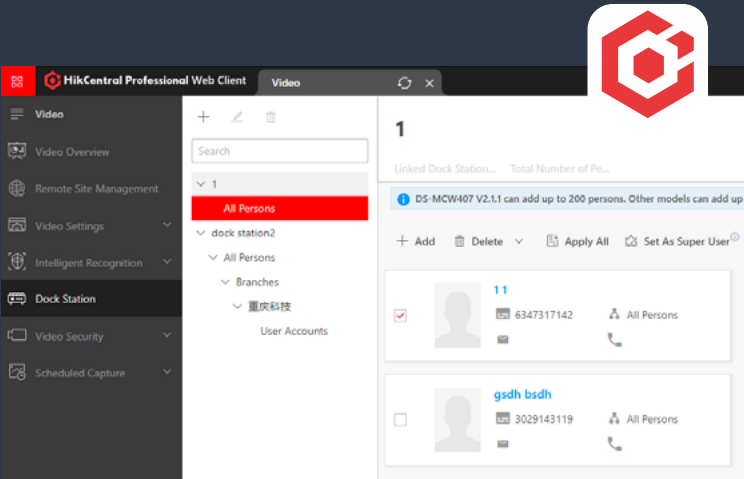
- Automatic charging and offloading when a BWC is connected to the dock station
- Data encryption available following the AES-256 standard
- Tagged video footage locked and cannot be overwritten
- Only authorized personnel can access the footage
- Device assignment with ID verification via password, card, face recognition, and fingerprint
- Full control over access rights by assigning roles, responsibilities, and devices to security staff

## Dual System Touchscreen Dock Station DS-MDS005

Open with  
**cards, PINs, facial**  
and **fingerprint** recognition >>>

**13.3**-inch touch-screen  
**Intuitive** user interface

Up to **32**  
docking bays



## HikCentral Professional

- Live view & playback
- Alarm linkage
- Two-way audio
- GIS
- Multi-level authority management

# Product Showcase

## DS-MCW409

- 1080p @ 30 fps
- Android system
- 2.4-inch LCD touch screen
- 3,300 mAh replaceable battery for 12 hours of recording, and 50mAh built in backup battery for use during battery change
- Built-in GPS
- 3G/4G, and Wi-Fi connections
- Built-in dual mic
- Switchable IR lights
- IP68 ingress protection
- 92.8 × 60 × 292 mm, 190g



## DS-MCW407(A)/(D)

- 1080p @ 30 fps
- Android system for (A) model; Linux system for (D) model
- 2.0-inch LCD touch screen
- 3, 220 mAh battery
- Up to 12-hour recording (720p, network and GPS off)
- Built-in GPS
- Optional 3G/4G, Wi-Fi connections
- Built-in mic
- Switchable IR lights
- IP68 ingress protection
- 82.6 × 58 × 29 mm, 159.5g



## DS-MCW406

- Up to 4 MP @ 30 fps
- Linux system
- 1.77-inch LCD touch screen, and non-screen model available
- 2,500 mAh battery
- Up to 12-hour recording (720p, network and GPS off)
- Built-in GPS
- Optional 3G/4G, Wi-Fi connections
- Switchable IR lights
- Dual mic
- IP67 ingress protection
- 85 × 59 × 30 mm, 125 g



## DS-MCW40B

- 1080p @ 30 fps
- Linux system
- 2.0-inch LCD touch screen facing the front
- 3, 220 mAh battery
- Up to 12-hour recording (720p, network and GPS off)
- Built-in GPS
- 3G/4G, and Wi-Fi connections
- Switchable IR lights
- Built-in mic
- IP68 ingress protection
- 83 × 58 × 33 mm, 167g



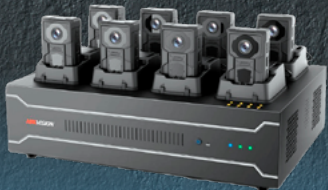
## DS-MDS005

- Linux system & Android system
- 8/16/24/32 slots with Type-C cable connection for charging and data transmission
- 13.3-inch touchscreen
- 2 TB storage by default, with up to 8 TB \* 4 disks
- 590 mm × 586 mm × 85.2 mm, 18 kg
- Wall mount



## DS-MDS001

- Linux system
- 8 slots with plug-and-play pin connection for charging and data transmission
- 2 TB storage by default, with up to 8 TB \* 4 disks
- 400 mm × 300 mm × 124 mm, 71 kg
- Desk mount



# Brackets for DS-MDS005

	<b>DS-MH1901</b>	Wall-mounted bracket - Main bracket (1-2) weight: appro 4.8kg / 593 x 370 mm / Suit for 8 or 16 slots
	<b>DS-MH1902</b>	Wall-mounted bracket - Main bracket (3-4) weight: appro 9.6kg / 1132 x 370 mm / Suit for 24 or 32 slots