



**HIKVISION®**

# Hikvision Solutions for Stadiums

Engaging fans, securing games

Stadium operators face a critical challenge in today's world: to create a real-life experience so unforgettable that fans want to attend games in person, rather than watching them from home.

To achieve this goal, stadium staff must offer efficient and enjoyable operations that optimize the spectator experience – and everything must be complemented by top-notch security.

At Hikvision, we understand these challenges. That's why we have developed solutions that help stadiums create exceptional environments for sports fans, with enhanced security. Our technologies simplify operations and improve fan engagement, making it easier than ever for stadiums to attract people on-site and build a strong brand image.

Read on to explore how Hikvision can help you take your stadium experience to the next level.

## Boosted Fan Experience



Convenient Parking



Visual Engagement



Event Live Streaming

## Secured & Streamlined Operations



Security Inspection & Access Control



Shuttle Bus Onboard Security



Emergency Management



Intelligent Perimeter Protection



Digital Patrol Management



AR Live Interaction

# BOOST YOUR FAN EXPERIENCE

Sports stadiums accommodate large crowds of people during exciting events. Providing a fluid experience from parking to navigation, interaction, and game-watching to so many people in a short period of time poses major challenges.

But now, equipped with Hikvision's solutions for guided parking, LED visual engagement, and event live streaming, you'll be able to deliver an unprecedented level of comfort and convenience to fans during their visits to your stadium.

## Here's how it works.



# Convenient Parking for Everyone

Stadium car parks require on-going efficiency in vehicle authentication, payment management, and entry or exit queues, especially at peak times.

Here, Hikvision's streamlined parking solution provides:



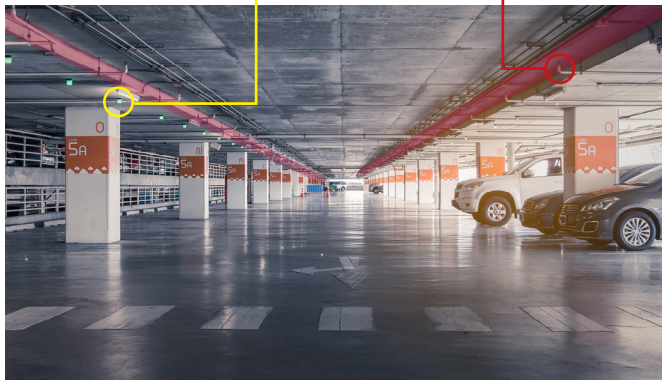
Fast authorized entry via intelligent barrier and **Automatic Number Plate Recognition (ANPR) Cameras**



**Parking Guidance Cameras** to help drivers quickly find a vacant space whether in off-street or open-air car parks



Flexible and simplified payment methods for parking fees, online and off



Off-street parking guidance



Open-air parking guidance

## Visual Engagement Through LED Screens

Large, bright LED displays can offer a stunning visual experience that can captivate and excite fans, making them feel more involved in the game. Stadiums can also communicate information such as scores, replays, upcoming events or promotions to fans quickly on these displays.

With Hikvision's visually engaging LED displays, you can create memorable experiences for fans at sports events while also generating revenue with ads and announcements. These screens can provide an indelible medium on which to build the brand image of your stadium and sports team.



## Record and Stream Games with Ease

By leveraging the excellent panoramic imaging of Hikvision's **PanoVu Cameras** to record games in real time, stadium operators can easily display live video on LED walls without the need for cameramen. Whether in the stadium or in the fan zone, fans can always see the big picture of the game.

With third-party algorithm developers, you can even overlay information of players and scores on the streaming video.



# SECURE & STREAMLINE YOUR OPERATIONS

Security is a critical issue for sports stadiums. These venues can be at risk of threats such as rowdiness and violence. Security measures play a key role in protecting the fans as well as the reputation of sports teams and stadiums.

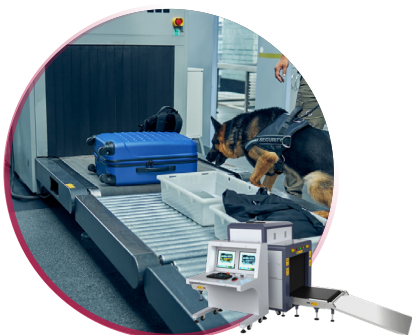
By leveraging Hikvision's AIoT-enabled devices in your operations, you'll gain the peace of mind that comes from knowing your stadium is well-protected with shortened response times and augmented situational awareness.



## Efficient Security Inspection & Access Control

Security screening and access control are usually the first and most important line of protection for stadiums.

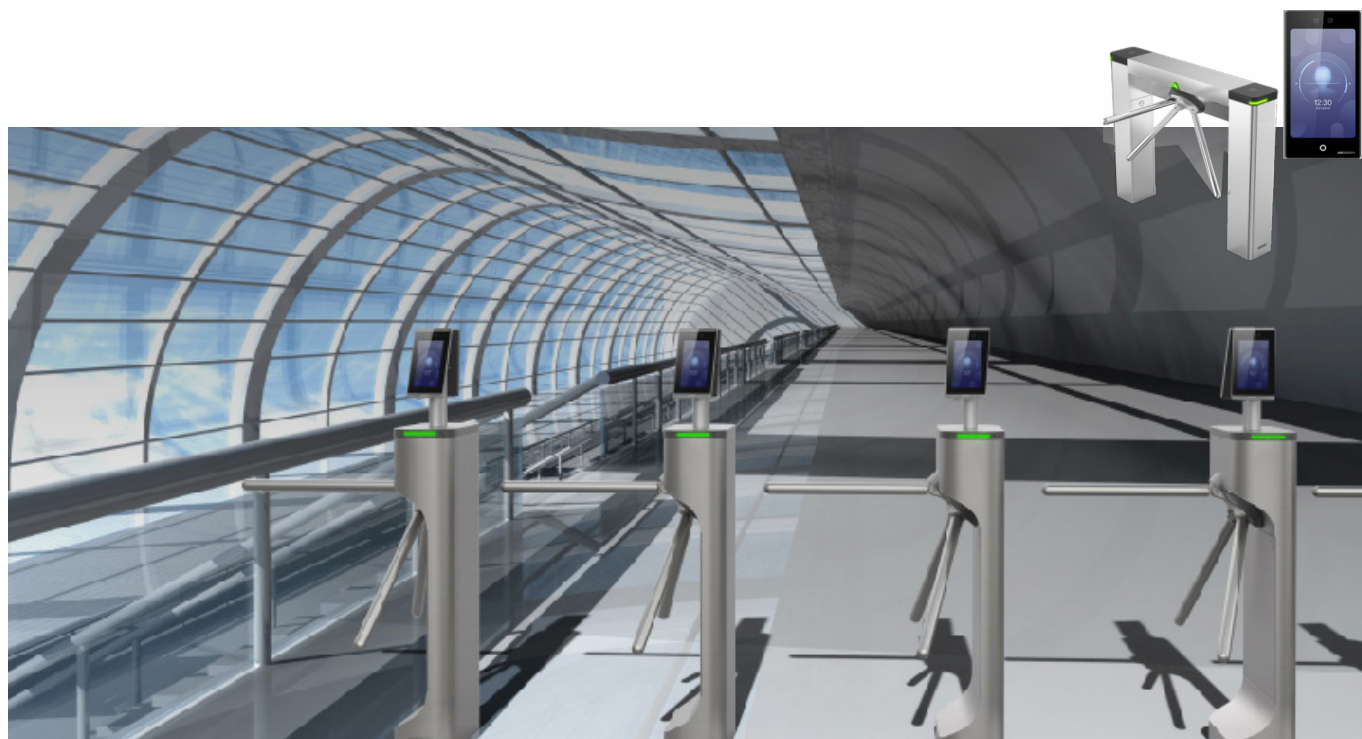
Hikvision designs intelligent equipment including **AI-based X-ray Baggage & Parcel Inspection Systems**, **Walk-Through Metal Detectors**, and **Handheld Metal Detectors** to detect up to 41 classes and 15 major types of prohibited items at sports venues.



Hikvision's variety of access control devices – such as **Tripod Turnstiles** and **Swing Barriers** – are designed to help fans move quickly and smoothly through the venue without long lines.

Integrated with ticketing systems, these devices automatically authenticate **more than 35 persons per minute** with QR codes on their printed tickets. They effectively minimize ticket evasion, inspection avoidance, or any other missed checkpoint while reducing staffing needs and costs.

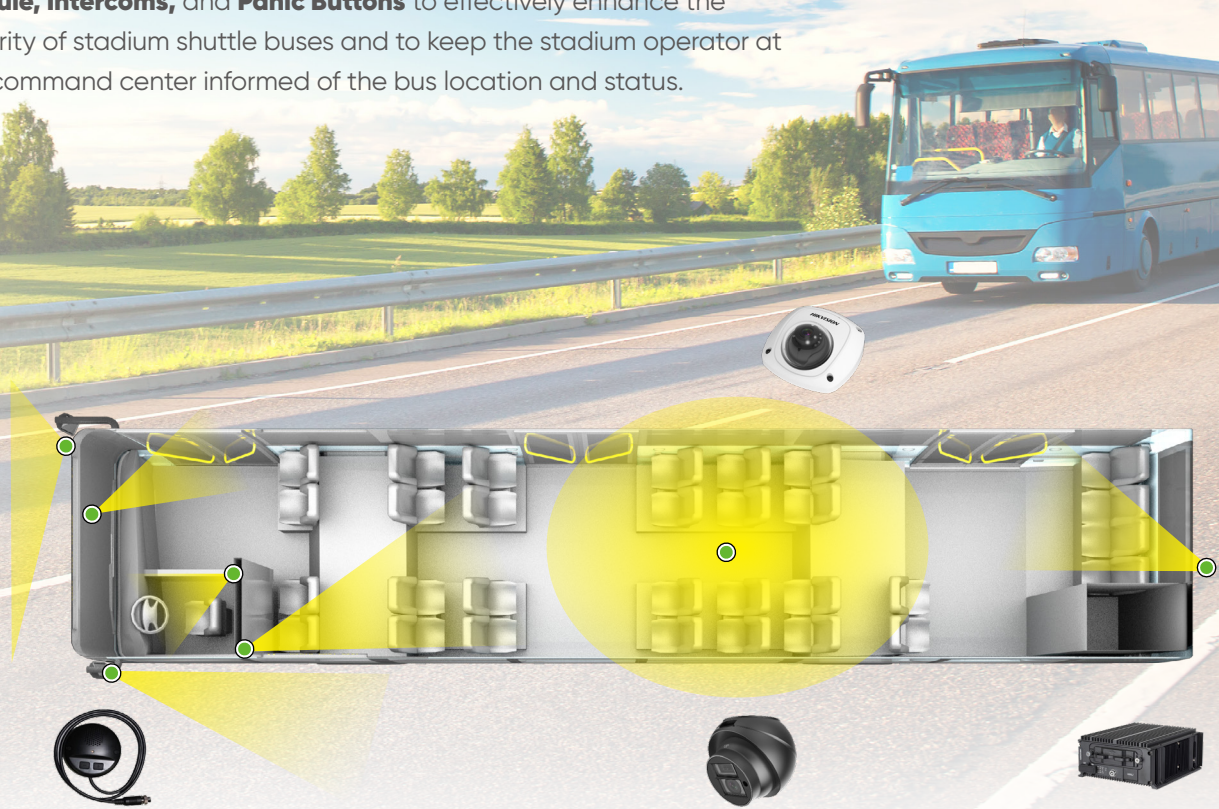
When needed, they can also support identification by face, fingerprint, and card.



## Protect Players, Staff and Fans on the Move

During sports events, shuttle buses are used to transport sports teams and staff between hotels and stadiums. Additionally, bus services can be provided for fans to conveniently travel to and from the venues.

We provide on-board **Security Cameras, Video Recorders with a GPS module, Intercoms, and Panic Buttons** to effectively enhance the security of stadium shuttle buses and to keep the stadium operator at the command center informed of the bus location and status.



## Emergency Alarms Always within Reach

Immediate response to emergency situations is crucial for securing a venue. Thus it is important for stadium personnel to provide sufficient means to report issues and problems as soon as they happen.

Hikvision offers several advanced **Emergency Alarm Products** in a variety of form factors, with features such as video linkage and audio intercoms. These products can be deployed both indoors and out, enabling faster and more effective emergency services to those in need.



## Automate Perimeter Protection with AI

Protecting the perimeter of a stadium from unauthorized access is essential for maintaining overall safety and protecting valuable assets from damage or loss. However, stadiums tend to have extensive perimeters that require a large number of security personnel to cover, which can be costly and difficult to manage.

Hikvision's **Intelligent Cameras** are ideal for perimeter protection at stadiums as they are specially engineered for automatically detecting persons and vehicles using deep-learning algorithms. These cameras can also deter would-be trespassers or vandals with visual and auditory warnings.

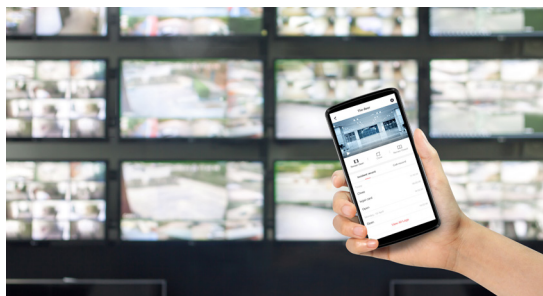
Where data wiring is too costly or power supply non-existent, operators can install our cable-free **Solar-powered Cameras**. **Thermal Cameras** can provide a vastly extended detection range, and they operate with extreme accuracy regardless of weather and light conditions.



# Digital Management of Security Patrols

Stadium security patrols help keep an eye on suspicious activities, initiate emergency services, and ensure a smooth flow of foot traffic to prevent accidents or incidents.

However, stadium operators have to strike a balance between protecting the attendees, the venue, and sports facilities versus keeping their operational costs within budget. Maximizing automation is critical. Here's how Hikvision's **Digital Patrol Management** solution comes in to regulate security patrols with increased efficiency.



A security manager designates a patrol route and schedule, and pushes the patrol task to a security guard's **HikCentral Professional** mobile app.

The security guard carries out the task by reporting anomalies on the app and punches in at access control devices along the route.



The security manager analyzes the security status of the venue with automatically generated statistics reports.

## Security patrol locations



Stadium entrances



Interior space



Control room



Fire extinguishers



Perimeters



Car parks

...

## Enhance Situational Awareness Throughout the Venue

Sports and other stadiums cover large areas and consist of various complex buildings. Getting a complete view of the entire venue using legacy CCTV systems would be terribly inefficient.

But now, by deploying Hikvision's **PanoVu** or **TandemVu Cameras** at the highest points, stadium operators can easily get a big picture of the whole stadium on a live, Augmented Reality map. This **AR Live Interaction** solution enables centralized management, allowing operators to:



“ Advanced and innovative technologies can unlock unforgettable fan experiences at thrilling live events – and they can do it while keeping visitors, employees, and property secure. Contact your local Hikvision representative today to see the amazing possibilities that await your stadium! ”

# Hikvision Solutions for Stadiums

Engaging fans, securing games



[www.hikvision.com](http://www.hikvision.com)  
[support@hikvision.com](mailto:support@hikvision.com)



**HIKVISION®**