

Model	DS-D5CxxRB/B2L					
Display						
Screen Size	65"		75"		86"	
Backlight	DLED		DLED		DLED	
Pixel Pitch	0.124 (H) × 0.372 (V) mm		0.143 (H) × 0.429 (V) mm		0.164 (H) × 0.493 (V) mm	
Resolution	3840 × 2160 @60 Hz		3840 × 2160 @60 Hz		3840 × 2160 @60 Hz	
Brightness	480 cd/m² (Typ.)		480 cd/m² (Typ.)		480 cd/m² (Typ.)	
Color Depth	10 bit		10 bit		10 bit	
Display Color	1.07 G		1.07 G		1.07 G	
Response Time	5 ms		5 ms		5 ms	
Panel Type	VA		VA		VA	
Contrast Ratio	5000:1 (Static)	30,000:1 (Dynamic)	5000:1 (Static)	30,000:1 (Dynamic)	5000:1 (Static)	30,000:1 (Dynamic)
Color Gamut	72% NTSC (CIE1931) (Typ.)		72% NTSC (CIE1931) (Typ.)		72% NTSC (CIE1931) (Typ.)	
Refresh Rate	60 Hz		60 Hz		60 Hz	
Viewing Angle	178° (H)/178° (V)		178° (H)/178° (V)		178° (H)/178° (V)	
Aspect Ratio	16:9		16:9		16:9	
Surface Hardness	9H (Pencil)7 (Mohs)		9H (Pencil)7 (Mohs)		9H (Pencil)7 (Mohs)	
Surface Glass	Anti-Glare & Anti-Fingerprint glass		Anti-Glare & Anti-Fingerprint glass		Anti-Glare & Anti-Fingerprint glass	
Surface Haze	25% Haze		25% Haze		25% Haze	
Glass Bonding Method	Zero Lamination		Zero Lamination		Zero Lamination	
Display Area	1428.48 (H) × 803.52 (V)		1650.24 (H) × 928.26 (V)		1895.04 × 1065.96 mm	
Working Duration	7 × 16 H		7 × 16 H		7 × 16 H	
Transmittance	88% ± 3		88% ± 3		88% ± 3	
Lifespan	50,000 hours		50,000 hours		50,000 hours	
Touch						
Type	Infrared Touch Screen		Infrared Touch Screen		Infrared Touch Screen	
Touch Point	Up to 50-point multi-touch		Up to 50-point multi-touch		Up to 50-point multi-touch	
Touch Response Time	≤ 2 ms		≤ 2 ms		≤ 2 ms	
Minimum Touch Object	≥ 1.5 mm (≥ 90% touching area)		≥ 1.5 mm (≥ 90% touching area)		≥ 1.5 mm (≥ 90% touching area)	
Touch Precision	± 0.5 mm (≥ 90% touching area)		± 0.5 mm (≥ 90% touching area)		± 0.5 mm (≥ 90% touching area)	
Touch Resolution	32768 × 32768		32768 × 32768		32768 × 32768	
Built-in System						
Operation System	Android 14.0		Android 14.0		Android 14.0	
Memory & Storage	8 GB + 128 GB		8 GB + 128 GB		8 GB + 128 GB	
Processor	Quad-core Cortex-A76 × 4 (2.4 GHz)and quad-core Cortex-A55 × 4 (1.8 GHz)		Quad-core Cortex-A76 × 4 (2.4 GHz) and quad-core Cortex-A55 × 4 (1.8 GHz)		Quad-core Cortex-A76 × 4 (2.4 GHz) and quad-core Cortex-A55 × 4 (1.8 GHz)	
GPU	Mali-G610 MC4		Mali-G610 MC4		Mali-G610 MC4	
HDCP Version	2.3 & 2.0 & 1.4		2.3 & 2.0 & 1.4		2.3 & 2.0 & 1.4	
Internal Function						
Loudspeaker	Built-in 2 × 20 W + 25 W loudspeaker;		Built-in 2 × 20 W + 25 W loudspeaker;		Built-in 2 × 20 W + 25 W loudspeaker;	
Bluetooth	Built-in BLE (Bluetooth Low Energy) module supports Bluetooth 5.4		Built-in BLE (Bluetooth Low Energy) module supports Bluetooth 5.4		Built-in BLE (Bluetooth Low Energy) module supports Bluetooth 5.4	
NFC	Support card reader13.56 MHz, (ISO 14443A/ ISO 14443B/ ISO 15693)		Support card reader13.56 MHz, (ISO 14443A/ ISO 14443B/ ISO 15693)		Support card reader13.56 MHz, (ISO 14443A/ ISO 14443B/ ISO 15693)	
Light Sensor	Yes		Yes		Yes	
Humidity and Temperature Sensor	Relative humidity accuracy: up to ± 1.5 %RH; Temperature accuracy: up to ± 0.1 °C		Relative humidity accuracy: up to ± 1.5 %RH; Temperature accuracy: up to ± 0.1 °C		Relative humidity accuracy: up to ± 1.5 %RH; Temperature accuracy: up to ± 0.1 °C	
Interface						
Video & Audio Interface	HDMI IN 2.0 x 3 (Front x 1; Rear x 2; Support HDCP2.3 & 2.0 & 1.4; Support HDMI CEC protocol), VGA IN x 1 (Rear), Audio IN x 1 (Rear), HDMI OUT 2.0 x 1 (Rear), Audio OUT x 1 (Rear), SPDIF x 1 (Rear)		HDMI IN 2.0 x 3 (Front x 1; Rear x 2; Support HDCP2.3 & 2.0 & 1.4; Support HDMI CEC protocol), VGA IN x 1 (Rear), Audio IN x 1 (Rear), HDMI OUT 2.0 x 1 (Rear), Audio OUT x 1 (Rear), SPDIF x 1 (Rear)		HDMI IN 2.0 x 3 (Front x 1; Rear x 2; Support HDCP2.3 & 2.0 & 1.4; Support HDMI CEC protocol), VGA IN x 1 (Rear), Audio IN x 1 (Rear), HDMI OUT 2.0 x 1 (Rear), Audio OUT x 1 (Rear), SPDIF x 1 (Rear)	
Control interface	TOUCH-USB 3.0 × 1 (Front × 1), TOUCH-USB 2.0 × 2 (Rear × 2),RS232 × 1 (Rear)		TOUCH-USB 3.0 × 1 (Front × 1), TOUCH-USB 2.0 × 2 (Rear × 2),RS232 × 1 (Rear)		TOUCH-USB 3.0 × 1 (Front × 1), TOUCH-USB 2.0 × 2 (Rear × 2),RS232 × 1 (Rear)	
Network Interface	LAN (1000 Mbps) × 2 (Rear),Wi-Fi AP & Station Wi-Fi AP & Station, 2.4 G/5 G Wi-Fi 6, IEEE 802.11 a/b/g/n/ac/ax 2 × 2 MIMO (2.4 GHz and 5 GHz) authentication protocols WEP, WPA, WPA2, PSK and 802.1X EAP		LAN (1000 Mbps) × 2 (Rear),Wi-Fi AP & Station Wi-Fi AP & Station, 2.4 G/5 Gt Wi-Fi 6, IEEE 802.11 a/b/g/n/ac/ax 2 × 2 MIMO (2.4 GHz and 5 GHz) authentication protocols WEP, WPA, WPA2, PSK and 802.1X EAP		LAN (1000 Mbps) × 2 (Rear),Wi-Fi AP & Station Wi-Fi AP & Station, 2.4 G/5 G Wi-Fi 6, IEEE 802.11 a/b/g/n/ac/ax 2 × 2 MIMO (2.4 GHz and 5 GHz) authentication protocols WEP, WPA, WPA2, PSK and 802.1X EAP	
Data Transmission Interface	USB 3.0 × 4 (Front × 2; Rear × 2),USB 2.0 × 1 (Rear) Type-C × 2 (Front × 1; Rear × 1; Support USB 2.0, 100 W charging functions, DP IN 1.2)		USB 3.0 × 4 (Front × 2; Rear × 2),USB 2.0 × 1 (Rear) Type-C × 2 (Front × 1; Rear × 1; Support USB 2.0, 100 W charging functions, DP IN 1.2)		USB 3.0 × 4 (Front × 2; Rear × 2),USB 2.0 × 1 (Rear) Type-C × 2 (Front × 1; Rear × 1; Support USB 2.0, 100 W charging functions, DP IN 1.2)	
Camera						
Pixel	Pixel 48 MP for Photos & 8 MP for Video		Pixel 48 MP for Photos & 8 MP for Video		Pixel 48 MP for Photos & 8 MP for Video	
Camera Function	Support intelligent switching between Android system, OPS, and PC.		Support intelligent switching between Android system, OPS, and PC.		Support intelligent switching between Android system, OPS, and PC.	
Field Angle	93.4° (diagonal), 84.5° (horizontal), 54.1° (vertical)		93.4° (diagonal), 84.5° (horizontal), 54.1° (vertical)		93.4° (diagonal), 84.5° (horizontal), 54.1° (vertical)	
Distortion	≤ 2.5%		≤ 2.5%		≤ 2.5%	
Camera Resolution Ratio	Up to 4K		Up to 4K		Up to 4K	
Microphone						
Specification	Omni-directional 8-array layout		Omni-directional 8-array layout		Omni-directional 8-array layout	
Mic Function	Echo reduction and smart noise-cancellation		Echo reduction and smart noise-cancellation		Echo reduction and smart noise-cancellation	
Voice Distance	12 m		12 m		12 m	
Sampling Rate	32 K		32 K		32 K	
Mic Depth	16 bit		16 bit		16 bit	
Working Environment						
Working Temperature	0 °C to 40 °C (32 °F to 104 °F)		0 °C to 40 °C (32 °F to 104 °F)		0 °C to 40 °C (32 °F to 104 °F)	
Working Humidity	10%-90% RH		10%-90% RH		10%-90% RH	

\*Also available: DS-D5CxxRB/ A2L (without camera and microphone).

Select Series

WonderHub

Touch. Teach. Wonder to Reach.



65"

75"

86"



8-Core CPU  
8GB RAM  
128GB Storage



Android 14  
EDLA Certified



Versatile  
Interfaces



480 Nits  
Brightness



Intelligent  
Whiteboard



Smart  
Education



display.hikvision.com/en/  
support@hikvision.com

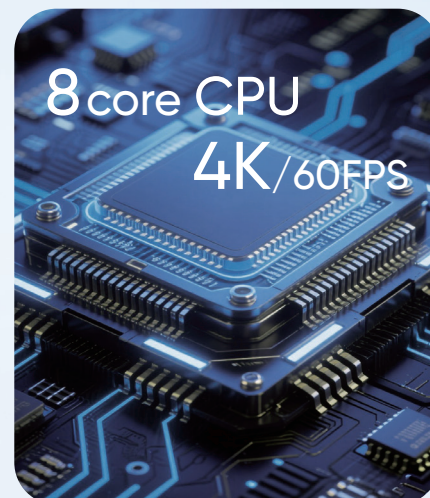


HIKVISION®



## 8-Core CPU Powerhouse for Unmatched Performance

- Experience seamless multitasking with a high-performance 8-core processor – built to handle demanding apps, real-time collaboration, and **4K content**.
- Ideal for interactive teaching, video streaming, and AI-powered tools.



## Android 14



## Android 14 EDLA Certified

for User-Friendly Operation Experience

- Android 14 preinstalled. Google EDLA certified.
- It offers easy interactions like with smart tablet, secure access to Google applications and educational apps, plus **OTA updates**. A trusted, future-ready platform for educators worldwide.

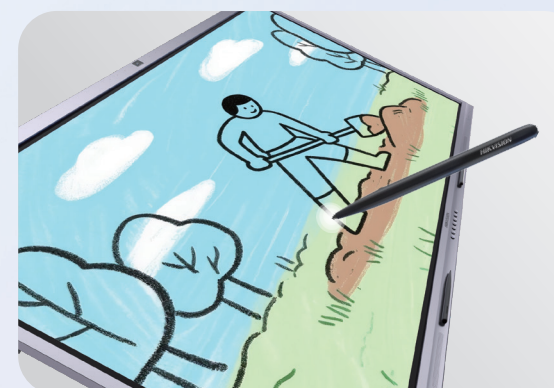
## Versatile Interfaces for Intuitive Control

- **Temperature & humidity sensor** to detect and show real-time data in the room. **Physical buttons** on the front panel.
- Dual full-feature **TYPE-C ports**, support audio and video transmission, up to 100W power supply.
- HCF centralized management platform for simplified IT operations.



## 480 Nits Ultra-Bright Display for Crystal-Clear Viewing Anywhere

- Say goodbye to glare. The anti-glare screen shines with 480 nits of brightness.
- Combined with exclusive picture quality tuning, it ensures vivid visuals even in sunlit classrooms. Plus, **TÜV-certified eye-care tech** eases strain during long sessions.



## Intelligent Whiteboard for Smarter Teaching

- **Zero-gap writing** delivers a true paper-like feel. Supports **50-point IR touch** with strong dust and palm rejection, ideal for multi-user collaboration.
- It offers diverse assistant tools, AI object recognition, and a rich online resource library make smart teaching easier than ever.

Built-in 8MP camera and  
8-microphone array



## Remote Education enabled by AI Camera and Built-in Loudspeakers

- Built-in **8MP camera** and **8-microphone array** that can pick up the sound within 12m, together supports sound screen, auto framing and speaker tracking.
- Built-in speakers support 2.1-channel: mid-treble 20W \* 2, bass 25W \* 1 for better sound effect.