

HikDashcam AE-DC4328-K5 User Manual

A Legal Statement

© 2022 Hangzhou HikAuto Technology Co., Ltd. All rights reserved. Specifications subject to change without notice.

HikAuto Technology Co., Ltd. is a division of Hikvision Digital Technology, Ltd., No.555 Qianmo Road, Binjiang District, Hangzhou 310051, China • Tel: +86-571-8807-5998

North America Offices: Hikvision USA Inc., 18639 Railroad St., City of Industry, CA 91748, USA • Hikvision Canada, 4848 rue Levy, St-Laurent, Quebec, Canada, H4R 2P1
Tel: +1-909-895-0400 • Toll Free in USA: +1-866-200-6690 • E-Mail: sales.usa@hikvision.com • www.hikvision.com

About this Manual

The Manual includes instructions for using and managing the Product. Pictures, charts, images, and all other information hereinafter are for description and explanation only. The information contained in the Manual is subject to change, without notice, due to firmware updates or other reasons.

Trademarks

- **HIKVISION** and other Hikvision trademarks and logos are the properties of Hikvision in various jurisdictions.
- Other trademarks and logos mentioned are the properties of their respective owners.

Disclaimer

TO THE MAXIMUM EXTENT PERMITTED BY APPLICABLE LAW, THIS MANUAL AND THE PRODUCT DESCRIBED, WITH ITS HARDWARE, SOFTWARE AND FIRMWARE, ARE PROVIDED "AS IS" AND "WITH ALL FAULTS AND ERRORS." HIKAUTO MAKES NO WARRANTIES, EXPRESS OR IMPLIED, INCLUDING WITHOUT LIMITATION, MERCHANTABILITY, SATISFACTORY QUALITY, OR FITNESS FOR A PARTICULAR PURPOSE. THE USE OF THE PRODUCT BY YOU IS AT YOUR OWN RISK. IN NO EVENT WILL HIKAUTO BE LIABLE TO YOU FOR ANY SPECIAL, CONSEQUENTIAL, INCIDENTAL, OR INDIRECT DAMAGES, INCLUDING, AMONG OTHERS, DAMAGES FOR LOSS OF BUSINESS PROFITS, BUSINESS INTERRUPTION, OR LOSS OF DATA, CORRUPTION OF SYSTEMS, OR LOSS OF DOCUMENTATION, WHETHER BASED ON BREACH OF CONTRACT, TORT (INCLUDING NEGLIGENCE), PRODUCT LIABILITY, OR OTHERWISE, IN CONNECTION WITH THE USE OF THE PRODUCT, EVEN IF HIKAUTO HAS BEEN ADVISED OF THE POSSIBILITY OF SUCH DAMAGES OR LOSS.

YOU ACKNOWLEDGE THAT THE NATURE OF INTERNET PROVIDES FOR INHERENT SECURITY RISKS, AND HIKAUTO SHALL NOT TAKE ANY RESPONSIBILITIES FOR ABNORMAL OPERATION, PRIVACY LEAKAGE OR OTHER DAMAGES RESULTING FROM CYBER-ATTACK, HACKER ATTACK, VIRUS INFECTION, OR OTHER INTERNET SECURITY RISKS; HOWEVER, HIKAUTO WILL PROVIDE TIMELY TECHNICAL SUPPORT IF REQUIRED. YOU AGREE TO USE THIS PRODUCT IN COMPLIANCE WITH ALL APPLICABLE LAWS, AND YOU ARE SOLELY RESPONSIBLE FOR ENSURING THAT YOUR USE CONFORMS TO THE APPLICABLE LAW. ESPECIALLY, YOU ARE RESPONSIBLE, FOR USING THIS PRODUCT IN A MANNER THAT DOES NOT INFRINGE ON THE RIGHTS OF THIRD PARTIES, INCLUDING WITHOUT LIMITATION, RIGHTS OF PUBLICITY, INTELLECTUAL PROPERTY RIGHTS, OR DATA PROTECTION AND OTHER PRIVACY RIGHTS. YOU SHALL NOT USE THIS PRODUCT FOR ANY PROHIBITED END-USES, INCLUDING THE DEVELOPMENT OR PRODUCTION OF WEAPONS OF MASS DESTRUCTION, THE DEVELOPMENT OR PRODUCTION OF CHEMICAL OR BIOLOGICAL WEAPONS, ANY ACTIVITIES IN THE CONTEXT RELATED TO ANY NUCLEAR EXPLOSIVE OR UNSAFE NUCLEAR FUEL-CYCLE, OR IN SUPPORT OF HUMAN RIGHTS ABUSES.

IN THE EVENT OF ANY CONFLICTS BETWEEN THIS MANUAL AND THE APPLICABLE LAW, THE LATTER PREVAILS.

B Regulatory Information

FCC Information

Please take attention that changes or modification not expressly approved by the party responsible for compliance could void the user's authority to operate the equipment.

FCC Compliance: This equipment has been tested and found to comply with the limits for a Class B digital device, pursuant to part 15 of the FCC Rules. These limits are designed to provide reasonable protection against harmful interference when the equipment is operated in a residential environment. This equipment generates, uses, and can radiate radio frequency energy and, if not installed and used in accordance with the instructions, may cause harmful interference to radio communications. However, there is no guarantee that interference will not occur in a particular installation. If this equipment does, which can be determined by turning the equipment off and on, the user is encouraged to try to correct the interference by one or more of the following measures:

- Reorient or relocate the receiving antenna.
- Increase the separation between the equipment and receiver.
- Connect the equipment to an outlet on a circuit different from that to which the receiver is connected.
- Consult the dealer or an experienced radio/TV technician for help.

FCC Conditions

This device complies with part 15 of the FCC Rules. Operation is subject to the following two conditions:

1. This device may not cause harmful interference.
2. This device must accept any interference received, including interference that may cause undesired operation.

The equipment should be installed and operated with a minimum distance of 20 cm between the radiator and your body.

EU Conformity Statement

This product and, if applicable, the supplied accessories too are marked with "CE" and comply therefore with the applicable harmonized European standards listed under the RE Directive 2014/53/EU, the EMC Directive 2014/30/EU, the LVD Directive 2014/35/EU, and the RoHS Directive 2011/65/EU.

2012/19/EU (WEEE Directive): Products marked with this symbol cannot be disposed of as unsorted municipal waste in the European Union. For proper recycling, return this product to your local supplier upon the purchase of equivalent new equipment, or dispose of it at designated collection points. For more information, please see: www.recyclethis.info.

2006/66/EC (Battery Directive): This product contains a battery that cannot be disposed of as unsorted municipal waste in the European Union.

B Regulatory Information

See the product documentation for specific battery information. The battery is marked with this symbol, which may include lettering to indicate cadmium (Cd), lead (Pb), or mercury (Hg). For proper recycling, return the battery to your supplier or to a designated collection point. For more information see: www.recyclethis.info.

Industry Canada ICES-003 Compliance

This device meets the CAN ICES-3 (B)/NMB-3(B) standards requirements.

This device complies with Industry Canada licence-exempt RSS standard(s). Operation is subject to the following two conditions:

1. This device may not cause interference, and
2. this device must accept any interference, including interference that may cause undesired operation of the device. Le présent appareil est conforme aux CNR d'Industrie Canada applicables aux appareils radioexempts de licence. L'exploitation est autorisée aux deux conditions suivantes
 1. l'appareil ne doit pas produire de brouillage, et
 2. l'utilisateur de l'appareil doit accepter tout brouillage radioélectrique subi, même si le brouillage est susceptible d'en compromettre le fonctionnement.

Under Industry Canada regulations, this radio transmitter may operate only using an antenna of a type and maximum (or lesser) gain approved for the transmitter by Industry Canada. To reduce potential radio interference to other users, the antenna type and its gain should be so chosen that the equivalent isotropically radiated power (e.i.r.p.) is not more than that necessary for successful communication.

Conformément à la réglementation d'Industrie Canada, le présent émetteur radio peut fonctionner avec une antenne d'un type et d'un gain maximal (ou inférieur) approuvé pour l'émetteur par Industrie Canada. Dans le but de réduire les risques de brouillage radioélectrique à l'intention des autres utilisateurs, il faut choisir le type d'antenne et son gain de sorte que la puissance isotrope rayonnée équivalente (p.i.r.e.) ne dépasse pas l'intensité nécessaire à l'établissement d'une communication satisfaisante.

This equipment should be installed and operated with a minimum distance of 20 cm between the radiator and your body.

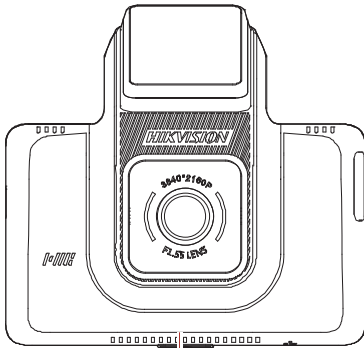
Cet équipement doit être installé et utilisé à une distance minimale de 20 cm entre le radiateur et votre corps.

Table of Contents

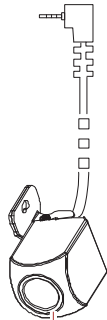
A Legal Statement	2
About this Manual	2
Trademarks	2
Disclaimer	2
B Regulatory Information	3
FCC Information	3
FCC Conditions	3
EU Conformity Statement	3
Industry Canada ICES-003 Compliance	4
C Packing List	6
D Parts Introduction	8
E Install Dashcam	9
F Install Rear Camera	10
OPTION 1: Exterior Mounting	10
OPTION 2: Interior Mounting	11
G Mobile Phone Connection	12
H Basic Operations	13
Start Up/Shut Down Manually	13
Recording	13
Firmware Upgrade	13
Specifications	13
I Cautions	14
Safety Instructions	14
Cautions	14
J Troubleshooting	15

C Packing List

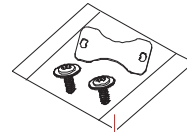
- 1 Dashcam × 1
- 2 Rear Camera × 1 and Connector Cable × 1
- 3 Accessory Package × 1
- 4 Electrostatic Sticker × 1
- 5 3-Lead Hardware Kit Power Cable × 1
- 6 User Manual × 1



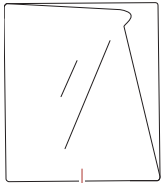
1



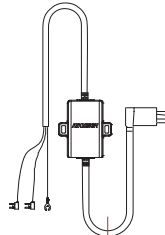
2



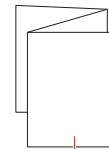
3



4



5



6



Figure 1, HikDashcam QR Code

D Parts Introduction

- ① 3M Adhesive Pad
- ② MicroSD Card Slot
- ③ Lens
- ④ Microphone
- ⑤ Rear Camera Connection
- ⑥ Power Supply Mini-USB Connection
- ⑦ Touch Screen
- ⑧ Indicator
- ⑨ Power Button

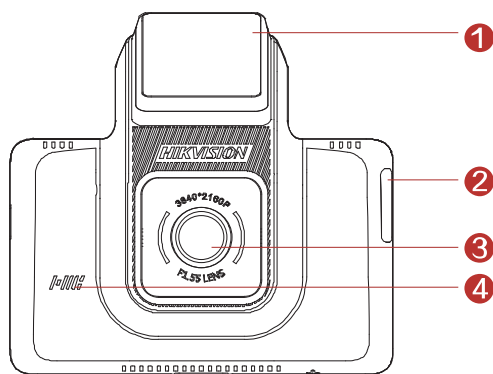


Figure 2, AE-DC4328-K5 Front View

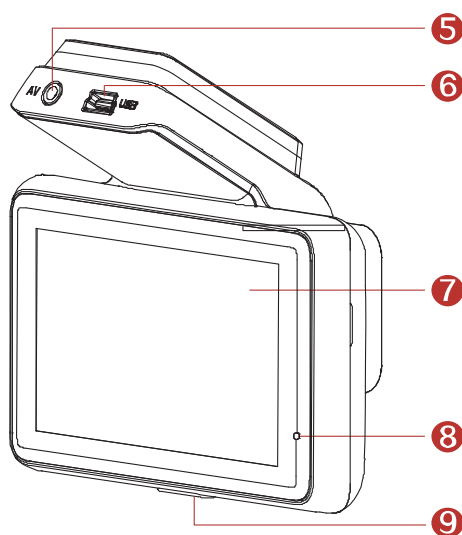


Figure 3, AE-DC4328-K5 Rear View

E Install Dashcam

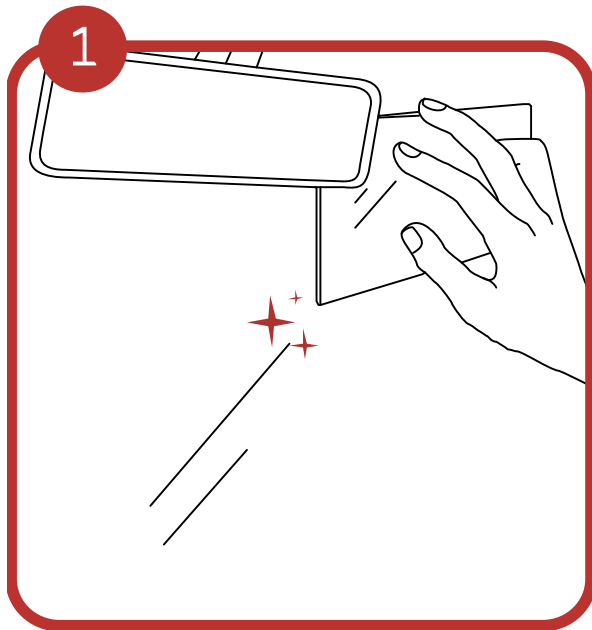


Figure 4, Apply Electrostatic Sticker

Clean the windshield and paste the electrostatic sticker onto the windshield.

Avoid introducing air bubbles. DO NOT reapply the film repeatedly.

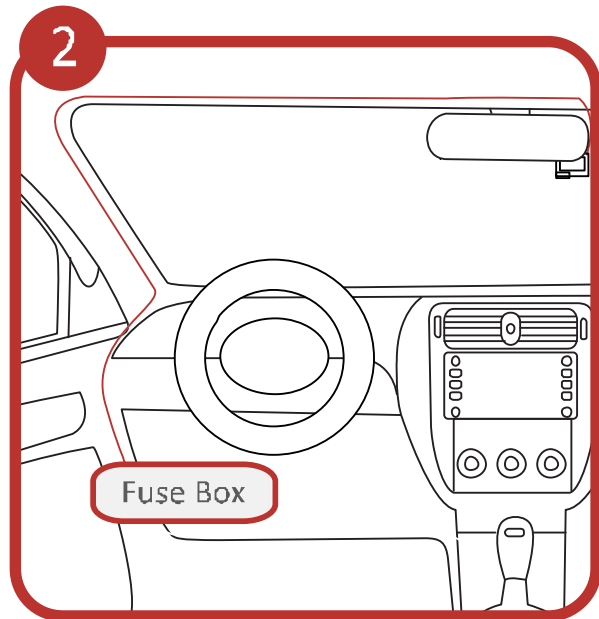


Figure 5, Route Cable to Fuse Box

Paste the device onto the electrostatic sticker and route cable to the fuse box for power.

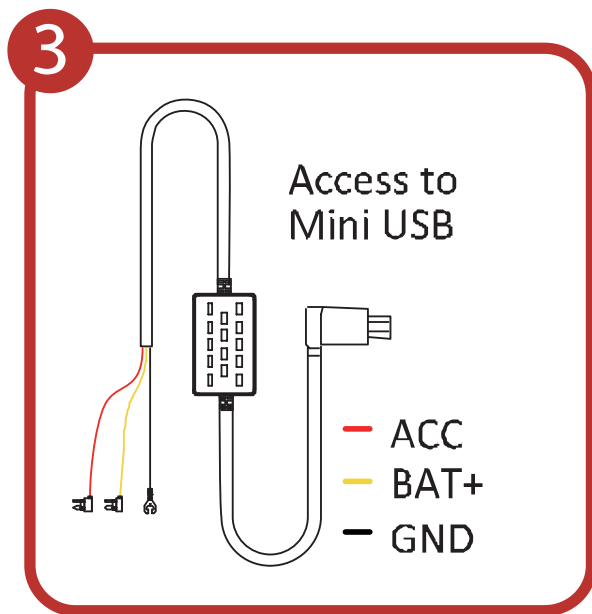


Figure 6, Connect Power Cord

Connect the power cord as per the above figure.

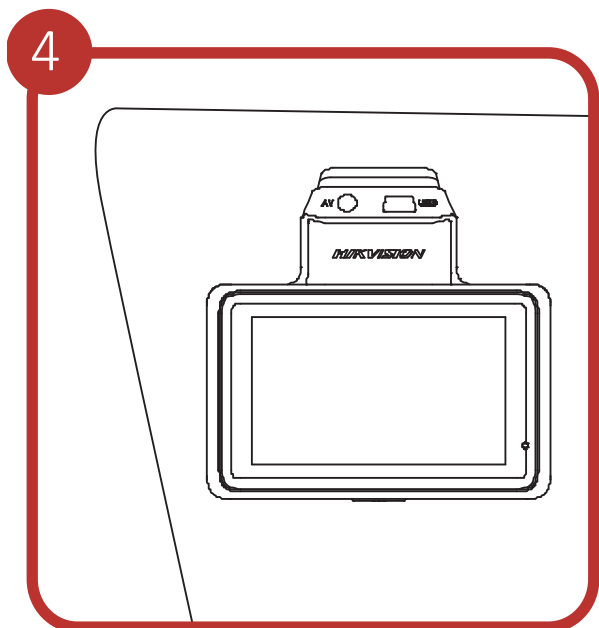


Figure 7, Adjust Dashcam Angle

Adjust the angle to the target direction.

F Install Rear Camera

OPTION 1: Exterior Mounting

- 1 Peel off the adhesive release paper on the camera bracket. Install the camera centered directly above the license plate so that it points at the road.
- 2 Connect the rear camera to the front dashcam by routing the cable as per the following diagram:

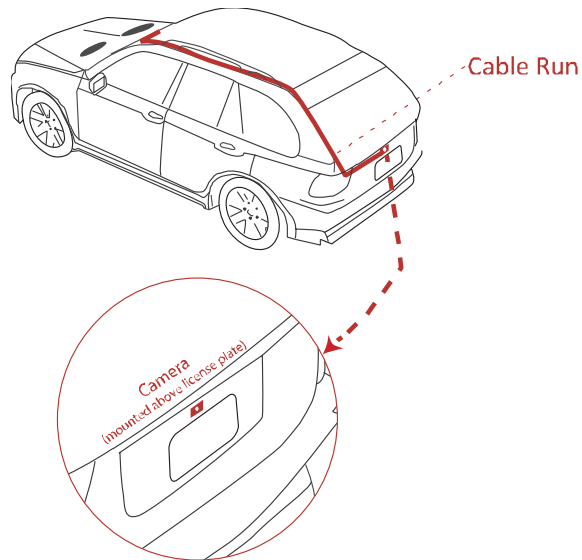


Figure 8, Rear Camera Exterior Cable Run



Figure 9, Rear Camera Exterior Placement

F Install Rear Camera (continued)

OPTION 2: Interior Mounting

- 1 Peel off the adhesive release paper on the camera bracket. Install the camera onto the top center of the rear window (interior side) so that it points directly at the road.
- 2 Connect the camera to the front dashcam by routing the cable as per the following diagram:

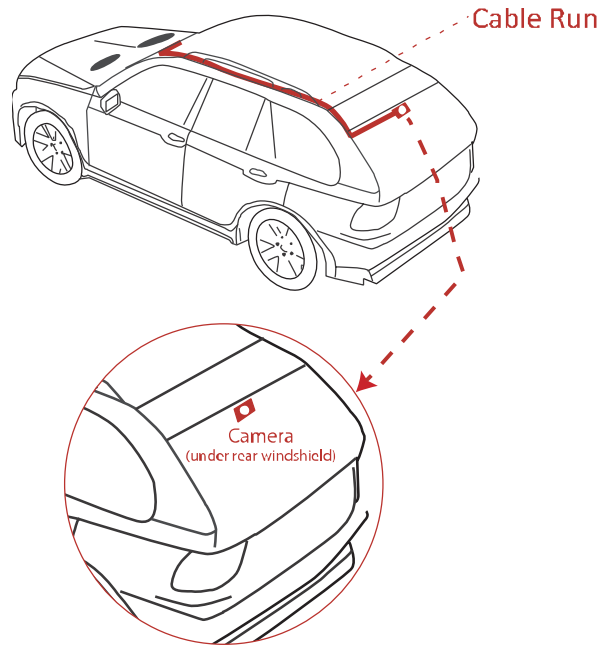


Figure 10, Rear Camera Interior Cable Run

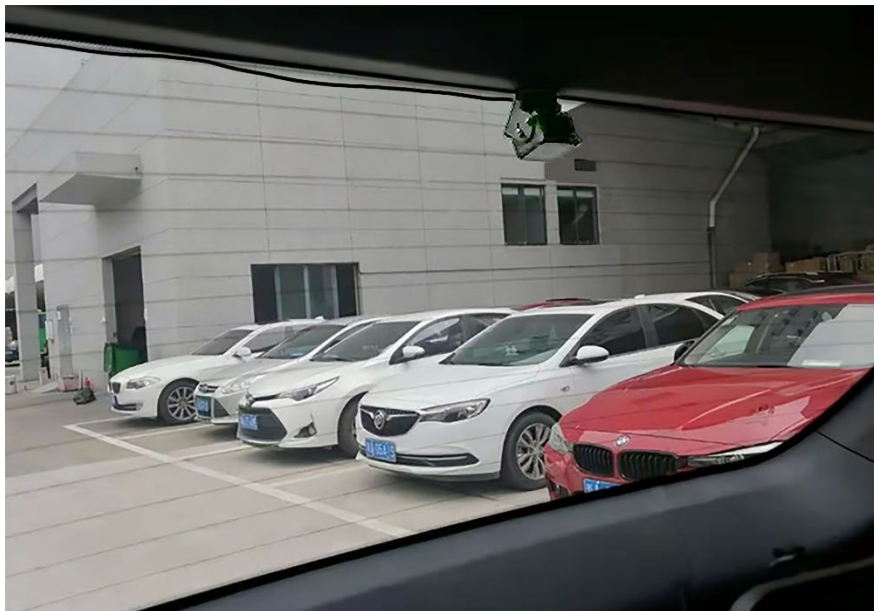


Figure 11, Rear Camera Interior Placement on Rear Windshield

G Mobile Phone Connection

- 1 Scan the QR code to download and install the HikDashcam app to your mobile phone.



Figure 12, Scan QR Code for HikDashcam

- 2 Add the dashcam to the app.
 - a. Run the HikDashcam app.
 - b. Tap Wi-Fi Connection.
 - c. In the Wi-Fi list, select the target dashcam's Wi-Fi SSID and enter the Wi-Fi password to establish a connection.
- You can set the dashcam parameters.
- For iOS, go your phone's Wi-Fi settings and connect to the dashcam Wi-Fi.
- 3 Edit the dashcam password to activate to avoid abnormal recording after connecting the Wi-Fi.

i Dashcam Wi-Fi default parameters:

- Wi-Fi SSID: HIKVISION-xxxx (xxxx refers to the last four verification code characters).
- Wi-Fi password by default is 1234567890
- Create a new password after first login.

H Basic Operations

Start Up/Shut Down Manually

Press and hold the power button for three seconds to shut down the dashcam. Press the power button to start the dashcam.

Recording

Recordings are divided into regular videos and emergency videos. You can set the video voice on/off through the system settings or the HikDashcam app.

Firmware Upgrade

Step 1: Run the HikDashcam app.

Step 2: Connect to the dashcam you would like to upgrade.

Step 3: Tap the **Upgrade** button to upgrade the firmware.

Specifications

	Model	AE-DC4328-K5
	Aperture	<i>f</i> /1.55
	Pixels	2560 x 1440
Video Resolution	Front Camera	1440p @ 30 fps, 1080p @ 30 fps
	Rear Camera	1080p @ 25 fps
	FOV	Diagonal: 123.4°, horizontal: 105°, vertical: 56.4°
	Screen	3-inch IPS 854 x 480
	Storage	MicroSD card, 16 GB to 256 GB
	G-Sensor	Built-in, collision triggered recording and recording lock
	Wi-Fi	Yes
	Audio Recording	Yes
	Power Supply	5 VDC, 2 A
	Power Consumption	Approximately 5 W
	Operating Temperature and Humidity	-20° to 70° C (-4° to 158° F), humidity 95% or less
	Dimensions (L x W x H)	89 mm x 42 mm x 80 mm (3.5" x 1.7" x 3.2")
	Weight	Approximately 110 g (0.24 lb)

I Cautions

Safety Instructions

These instructions are intended to ensure that users can use the product correctly to avoid danger or property loss.

Cautions

Injury or equipment damage may occur if any of the cautions are neglected.

- In the use of the dashcam, you must be in strict compliance with the local laws and regulations.
- You are recommended to install the dashcam near the rear mirror to ensure the dashcam can record with the best road view. DO NOT install the dashcam in a location that will block the driver's sight. Keep the user manual for future reference. See initial connection of dashcam in the user manual.
- Purchase the microSD card from a legal channel. To ensure safe and stable data transmission, it is recommended to use a microSD card of V30 or above.
- Format the new microSD card before using the card.
- To protect the microSD card from damage, shut down the dashcam before inserting and pulling out the microSD card.
- If the dashcam is directly connected with the vehicle power system, you are recommended to power off the dashcam when the engine is off. Disconnect the cigarette lighter power supply to avoid insufficient battery power. Reconnect the cigarette lighter when you start the car again.
- Operating temperature is from -20° to 70° C (-4° to 158° F).
- To protect the dashcam, DO NOT use it in high temperature, low temperature, or high-humidity environments. Protect the dashcam from rain and dust.
- The Manual is subject to update. The dashcam functions may vary by model.
- The device's driving assistance function only sends alarm or warning to the driver and cannot replace the driver's judgment. DO NOT rely only on the driving assistance function.

J Troubleshooting

Trouble	Solution
The dashcam falls off easily	<ul style="list-style-type: none"> • Clean the windshield before installation. • Check that the 3M adhesive pad is tightly adhered to the electrostatic film before installation.
Starting the dashcam failed	<ul style="list-style-type: none"> • Check whether the vehicle is started and the power supply is normal. • Check whether the car charger is tightly connected. • Restore to defaults: Hold the RESET button until the startup music is heard.
The dashcam powers off easily	<ul style="list-style-type: none"> • Make sure the power cord is in good condition. • Make sure the power cord is tightly connected to the appropriate interfaces.
Recording is abnormal and indicator is unlit	<ul style="list-style-type: none"> • Make sure that the dashcam started up successfully. Check that the microSD card is inserted. Check the microSD card status, e.g., its format and its lifespan. Change the microSD card if there are problems.
Recording is blurred	<ul style="list-style-type: none"> • Make sure the protective film has been removed. • Check that the windshield and the dashcam lens are clean.
Recording is muted	<ul style="list-style-type: none"> • Set audio settings on the device or turn on sound recording in the HikDashcam app. • Turn on sound through the dashcam's audio control function.
Dashcam reboots itself	<ul style="list-style-type: none"> • Check that the car charger is tightly connected. Check whether the car charger is equipped with a 5 VDC, ≥ 2 A power supply interface.
Mobile phone cannot connect to the dashcam	<ul style="list-style-type: none"> • Make sure the HikDashcam app is installed. Reinstall the dashcam to the app.

J Troubleshooting (continued)

The mobile phone cannot display recordings	Check the player or your phone system. Connect the microSD card to your computer and display the recordings.
The microSD card is not detected when connecting the dashcam to a computer with the supplied power cord	<p>The dashcam does not support data transmission, and the supplied power cord is only for charging.</p> <p>If you need to transfer data, connect the microSD card to your computer.</p>
Connecting to Wi-Fi takes a long time	<p>Check interference from surrounding Wi-Fi signals. Use the dashcam in an environment where there is less interference.</p> <p>Shut down unnecessary programs and apps on your phone to release some resources for the HikDashcam app, then reconnect the Wi-Fi.</p>
Dashcam Wi-Fi password is forgotten	<p>The default password is 1234567890. If you have revised the password, reset the password by doing the following:</p> <ol style="list-style-type: none"> 1. Hold the RESET button on the dashcam until the startup music is heard, the dashcam will be restored to the defaults. 2. Go to the HikDashcam app's Wi-Fi connection interface. 3. Select the Wi-Fi SSID, and log in with the default password 1234567890.
No GPS signal	<ul style="list-style-type: none"> • Check whether the GPS function is enabled. Normally, the GPS function is enabled by default. Make sure the device is not in a location with a weak signal or no signal, such as underground garage. • Make sure there is no metal around the device because metal can interfere with the GPS signal. • Make sure the location where the device is installed has good GPS reception.