

Remote Backup Software

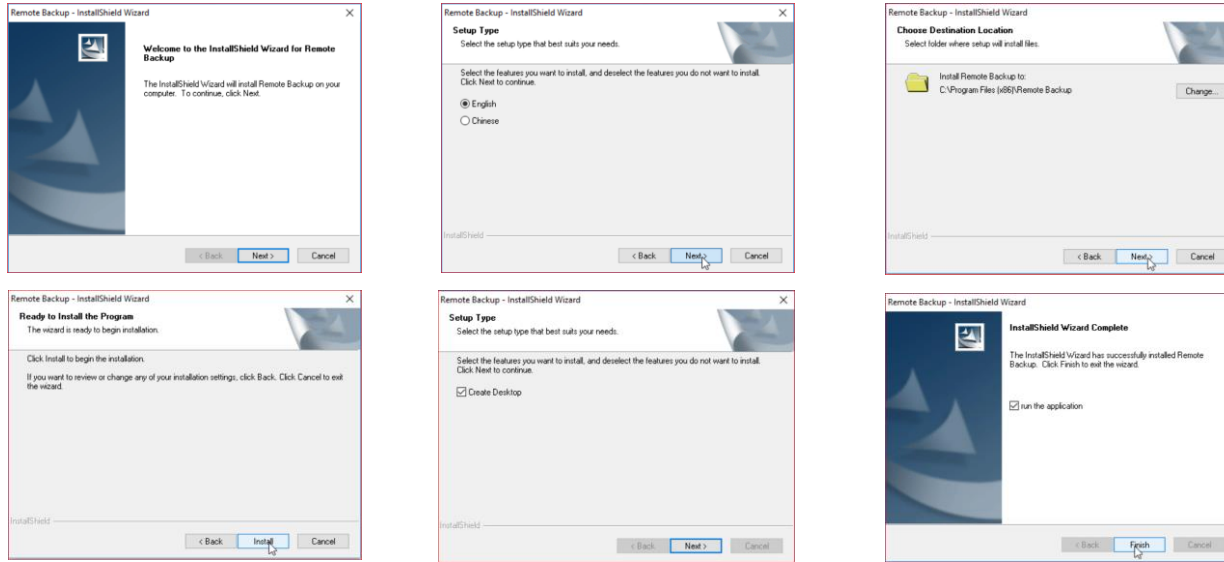
V2.2.0.8

GREAT PRODUCTS. GREATER PARTNERSHIPS.™

HIKVISION®

Installation

- Download installation file from http://overseas.hikvision.com/us/Tools_82.html
- Run installer  RemoteBackup.exe and agree to all prompts



- Consult program User Guide for detailed information (under 'Help' Tab in program or press F1 while program is running)
- Run program from desktop icon



Configure Settings

- Click Settings Tab

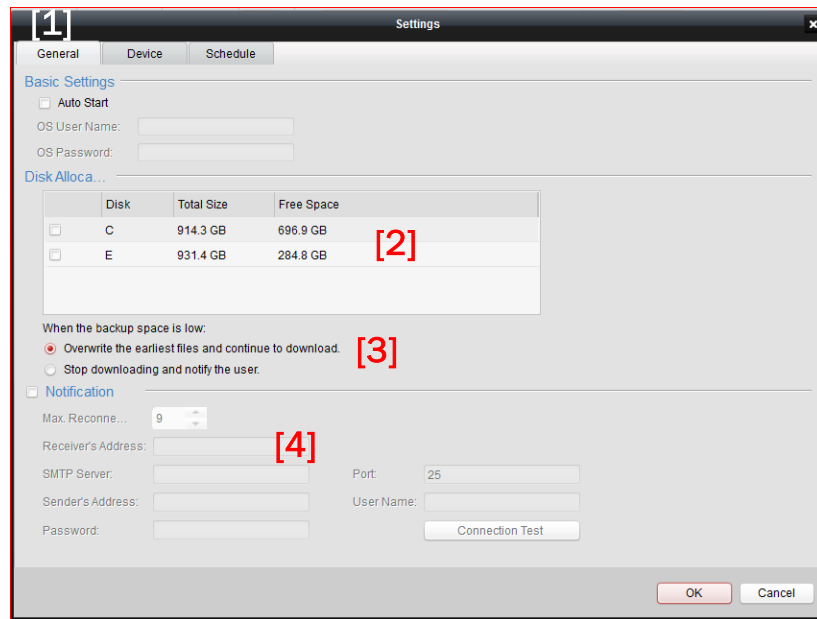


- In 'General' tab^[1]:

- Choose where files will be stored^[2]

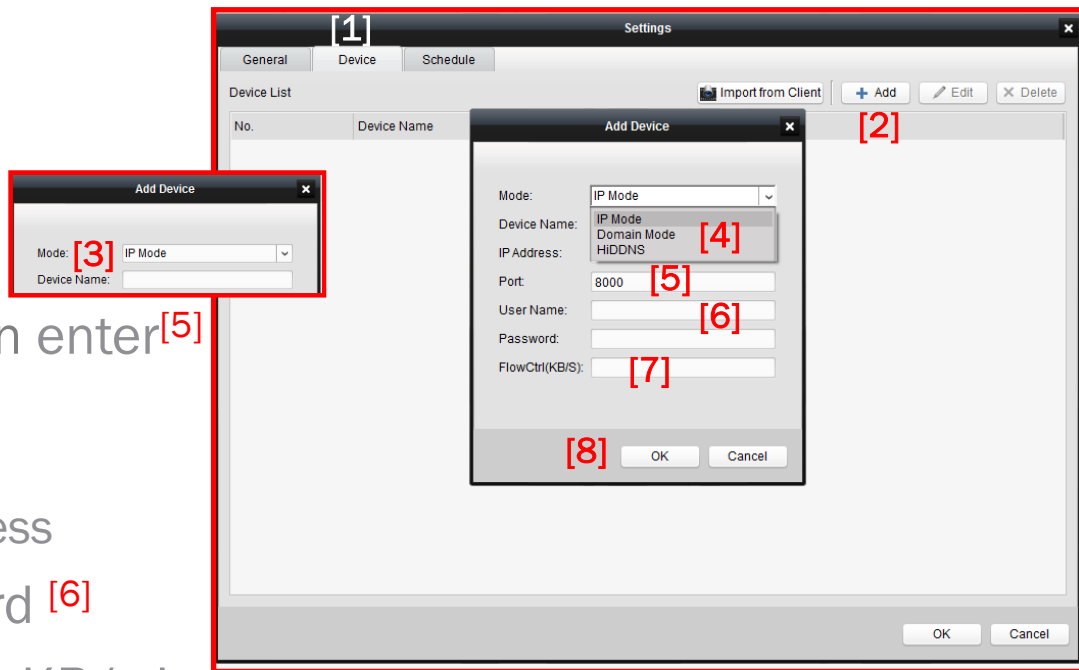
- Choose low disk space option^[3]

- If desired, enable email notification option^[4] and enter necessary data



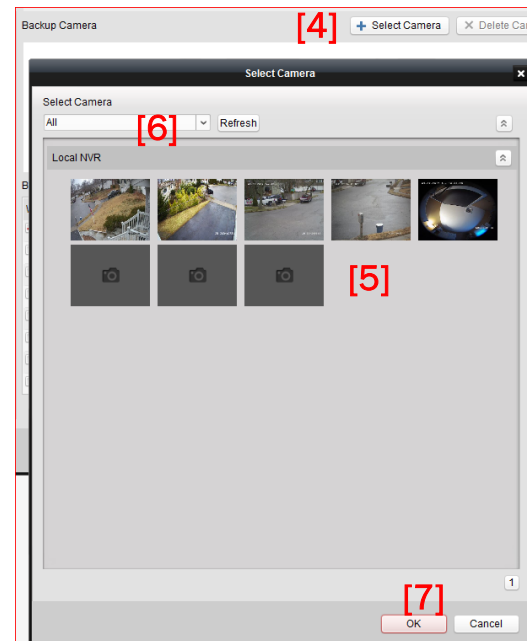
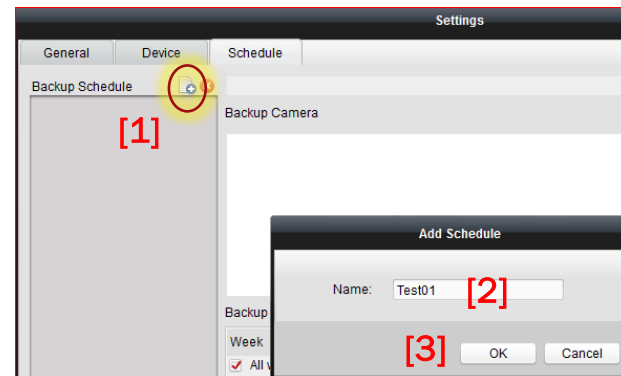
Add Devices

- In 'Device' tab^[1]:
- Choose 'Add'^[2]
- Enter a name for the device^[3]
- Select addressing mode^[4] then enter^[5]
 - IP address and port or
 - Domain Name and port or
 - HiDDNS name and server address
- Enter User Name and Password^[6]
- Flow control bandwidth limit in KB/s is optional^[7]
- Click 'OK'^[8]



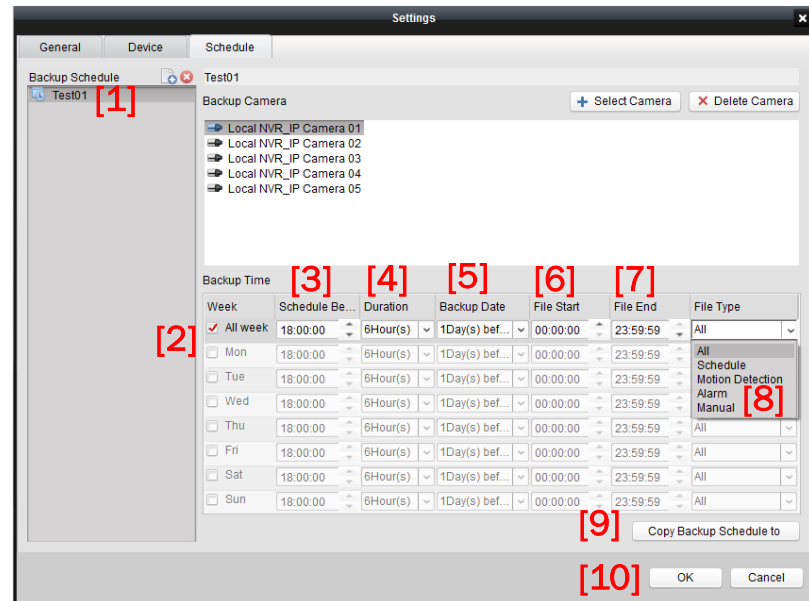
Add Schedule/Choose Cameras

- Add a schedule [1], add a name [2] and click OK [3]
- Click 'Select Camera' [4], click on desired cameras [5] (hold Ctrl key to select multiple cameras) or choose 'All'.
- Drop down [6] allows display of cameras attached to a specific device.
- Click 'OK' [7]



Set Schedule Time

- Highlight schedule to be defined [1]
- Choose day(s) of week [2] for backup
- Choose start time [3] and max duration [4] of backup process. (Allow sufficient time for all files to transfer.)
- Choose the age in days [5] of the files to be copied (e.g. yesterday – 1 day old; or today – 0 days old)
- Choose the time of day file start [6] and file end [7] for the recording period to be backed up (if less than the entire 24 hour period is desired).



- Choose file type [8] - all files or only specific types
- Copy Backup Schedule [9] can copy schedules to other devices
- Click 'OK' [10]

Status Monitoring / Backup Progress

- Choose backup type [1]

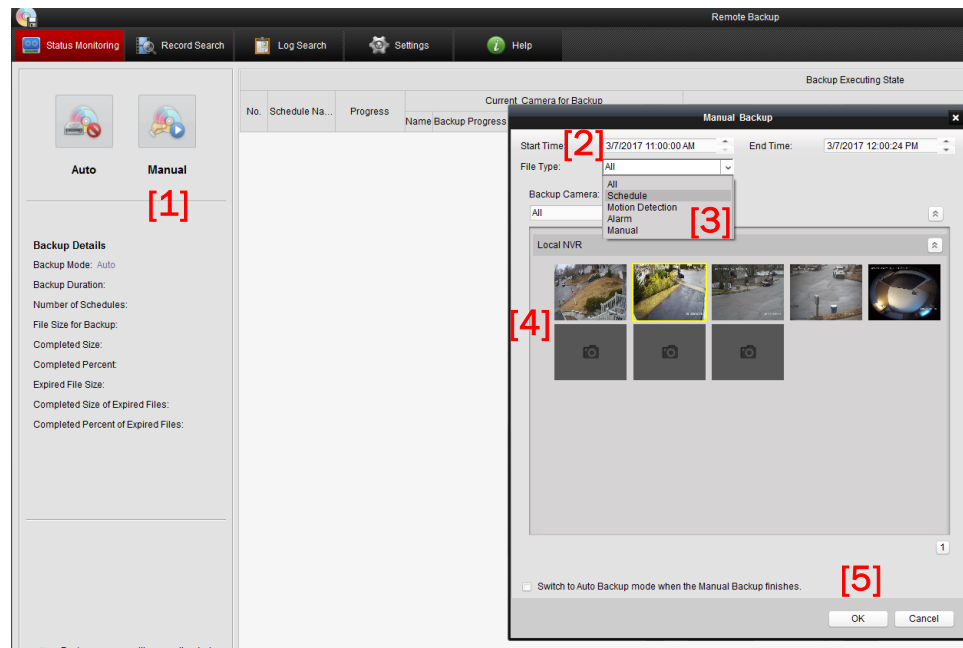
The screenshot displays the 'Remote Backup' window. On the left, there are 'Auto' and 'Manual' backup type buttons, with the 'Manual' button highlighted and labeled [1]. Below these is a 'Details:' section labeled [2] showing backup mode, duration, start and end times, file type, and camera selection. The main area is a table titled 'Backup Executing State' with columns for No., Schedule Na., Progress, Name Backup Progress, Completed (MB), Total Size(MB), Start Time, and End Time. A single row shows a manual backup in progress at 26% completion, with progress bars for both overall and current camera progress. Red callouts [3] through [8] point to specific data points in the table: [3] to the overall progress bar, [4] to the current camera progress bar, [5] to the completed MB value (990), [6] to the total size (3727), [7] to the start time (2017-03-07 11:14:09), and [8] to the end time (2017-03-07 12:18:45).

No.	Schedule Na.	Progress	Name Backup Progress	Completed (MB)	Total Size(MB)	Start Time	End Time
1	Manual Bac...	26%	Lo... 26%	990	3727	2017-03-07 11:14:09	2017-03-07 12:18:45

- Backups in progress will show an overview of the backup type in progress [2], overall [3] and current camera [4] progress, MB completed [5], total size of backup [6], start time [7] and end time [8]

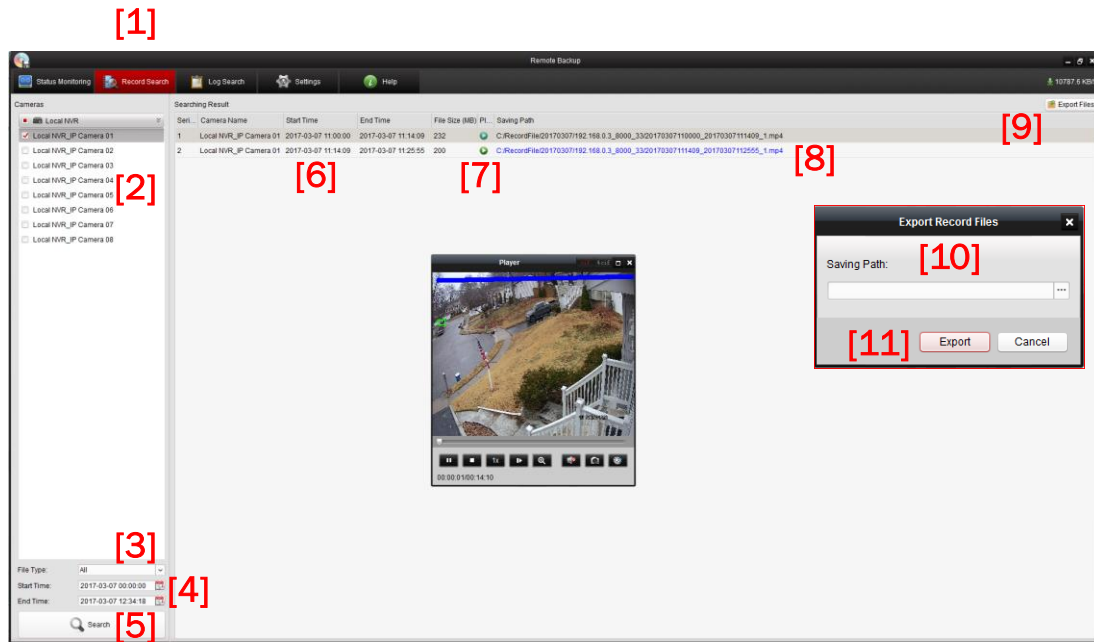
Starting a Manual Backup

- Choose 'Manual'[1]
- In popup, choose date/time range [2], file/event type [3], and camera(s) [4] for the backup
- Click 'OK'[5]
- Backup will start



Search Backup Files

- In Record Search [1] tab
- Choose camera(s) [2]
- Choose record file type [3]
- Choose date/time range [4]
- Click 'Search' [5]
- Video found within backup files will be displayed [6]
- Click [7] icon to preview video [8]
- Choose files [8] and click 'Export Files' [9] and in popup [10] specify file path for export and click 'Export' [11]



Log Search

- For information about Remote Backup program operation, choose Log Search tab [1]
- Specify search period start and end date/time [2] and log type [3]
- Click 'Search' [4] and log events are displayed [5]

[1]

Remote Backup

Status Monitoring Record Search **Log Search** Settings Help

Result

Serial No.	Time	Log Type	Details
1	2017-03-07 09:34:19	Start the software	Start Software
2	2017-03-07 10:23:49	Set disk	Disk Settings
3	2017-03-07 10:25:06	Set backup sched...	Configure Backup Schedule
4	2017-03-07 10:25:27	Set backup sched...	Configure Backup Schedule
5	2017-03-07 11:15:54	Set backup sched...	Configure Backup Schedule
6	2017-03-07 11:25:27	Set backup sched...	Configure Backup Schedule
7	2017-03-07 11:25:46	Set backup sched...	Configure Backup Schedule
8	2017-03-07 11:28:39	Start manual backup	Start Manual Backup
9	2017-03-07 14:07:30	Stop manual backup	Stop Manual Backup
10	2017-03-07 14:08:04	Start manual backup	Start Manual Backup
11	2017-03-07 14:14:28	Stop manual backup	Stop Manual Backup
12	2017-03-07 14:15:13	Set backup sched...	Configure Backup Schedule
13	2017-03-07 14:18:53	Set backup sched...	Configure Backup Schedule
14	2017-03-07 14:20:11	Start manual backup	Start Manual Backup
15	2017-03-07 14:20:35	Stop manual backup	Stop Manual Backup
16	2017-03-07 14:35:36	Start manual backup	Start Manual Backup

Start Time: 2017-03-07 00:00:00

End Time: 2017-03-08 00:00:00

Log Type: All

Search

[4]

[5]

Start Time: 2017-03-07 00:00:00

End Time: 2017-03-08 00:00:00

Log Type: All

All
Operation
Exception

[2]

[3]