

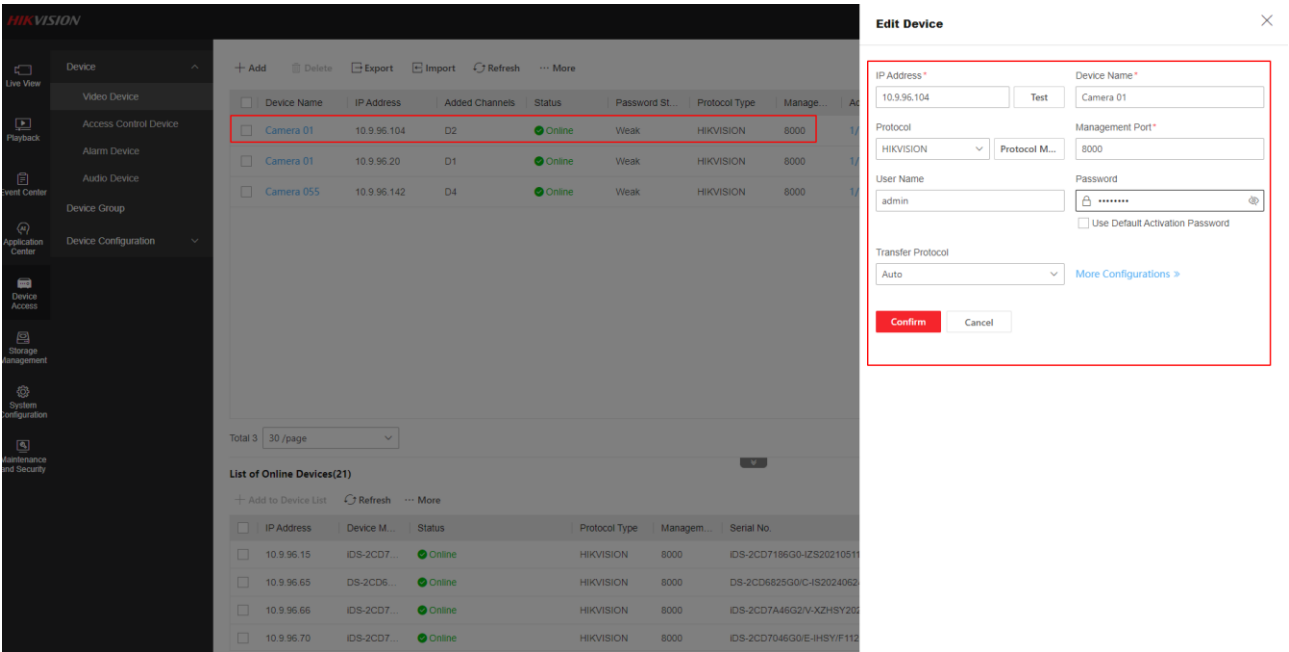


How to use Self-Learning on GUI5.0

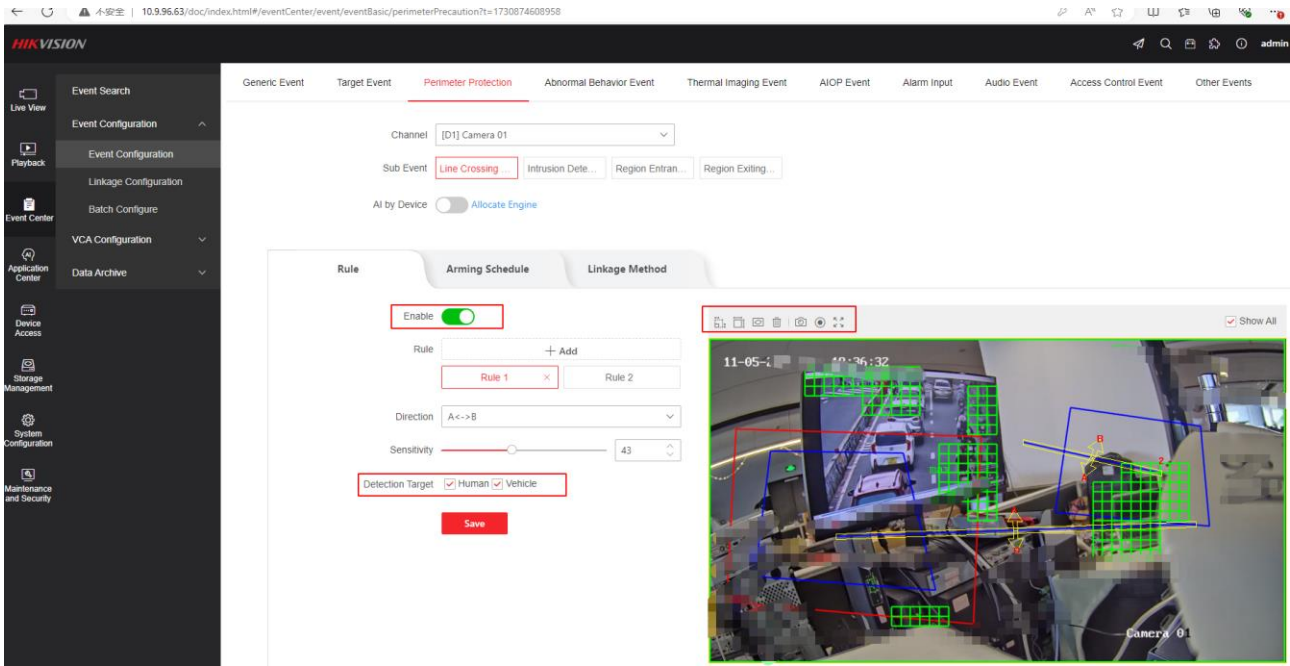
Title:	How to use Self-Learning on GUI5.0	Version:	v1.0	Date:	15/11/2024
Product:	NVR			Page:	1 of 3

How to use Self-Learning on GUI5.0

Step 1: Add camera And configure Perimeter Event

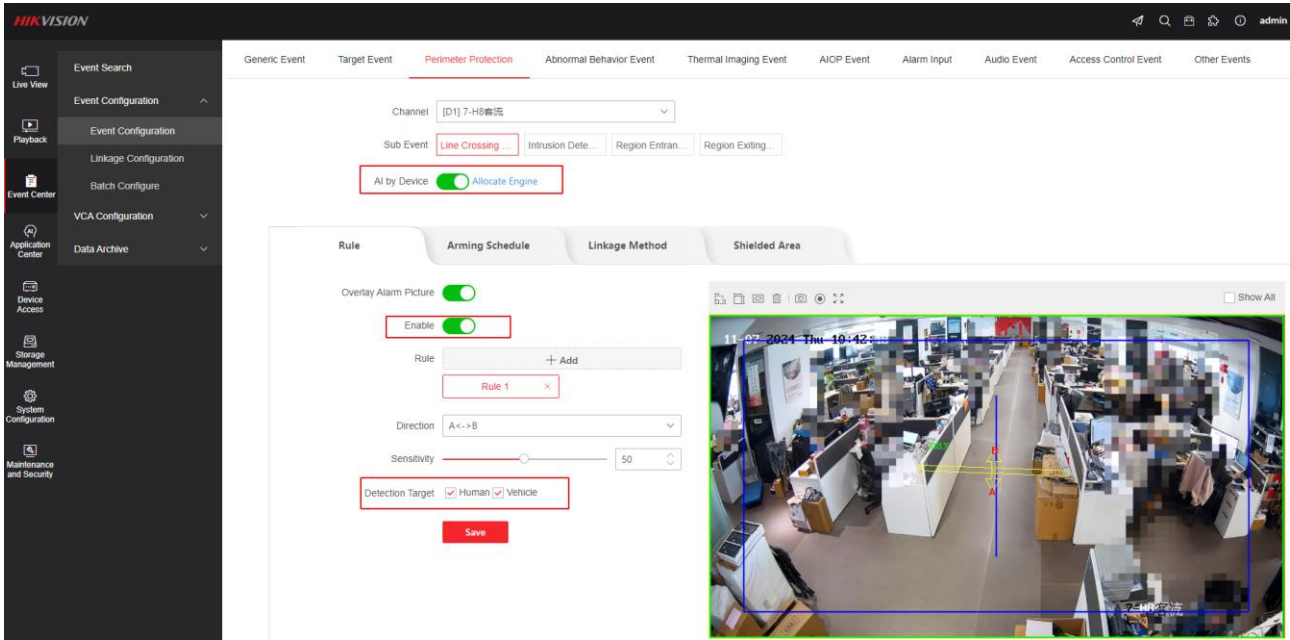
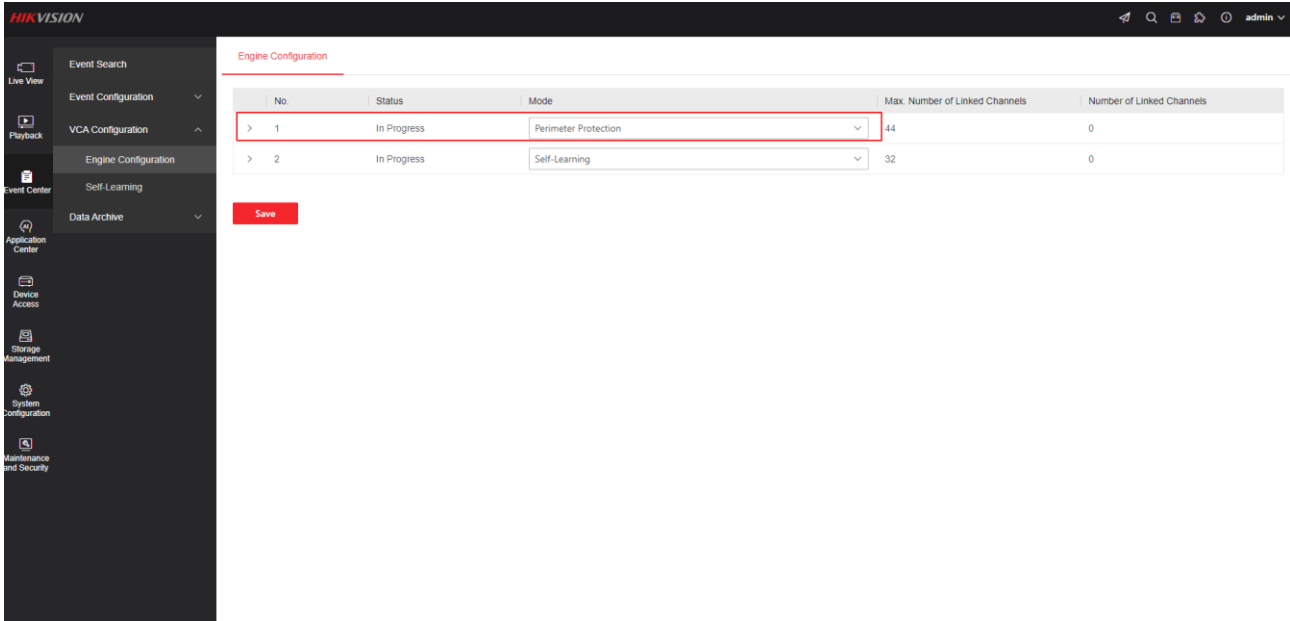


a) If IPC supports Perimeter Event, We can use the camera's perimeter function and select Humam or Vehicle

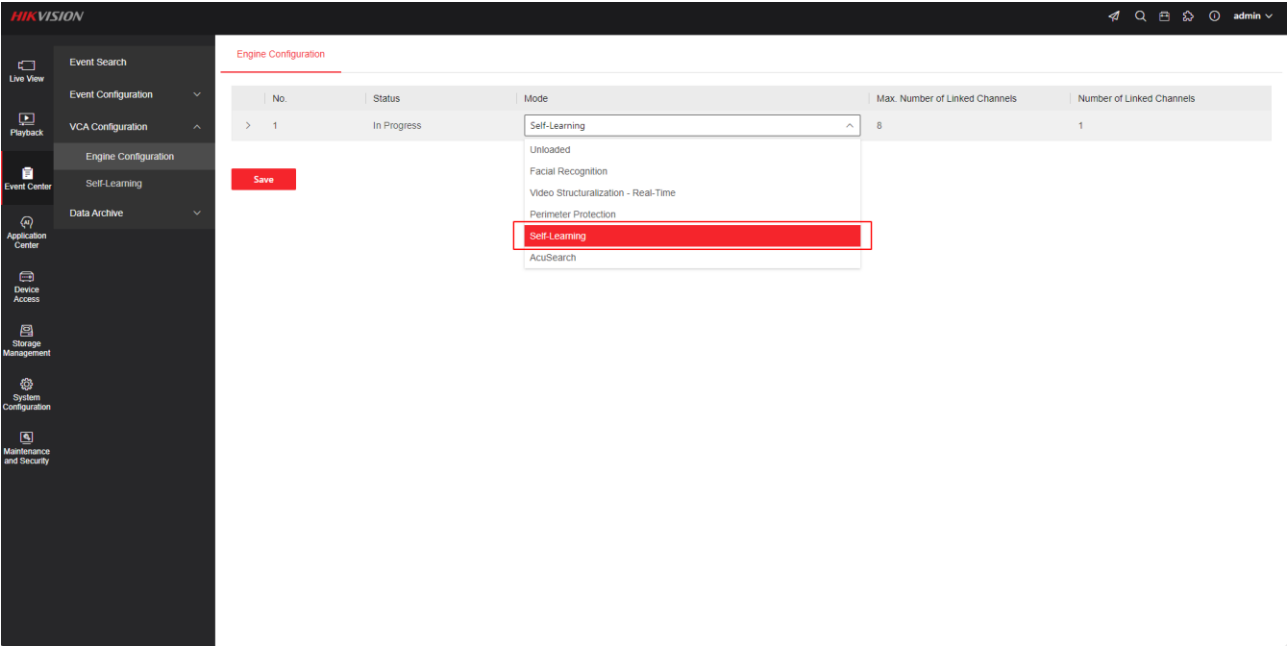


b) If ipc does not support Perimeter Event, NVR needs to have two engines, one of which switches to the Perimeter function

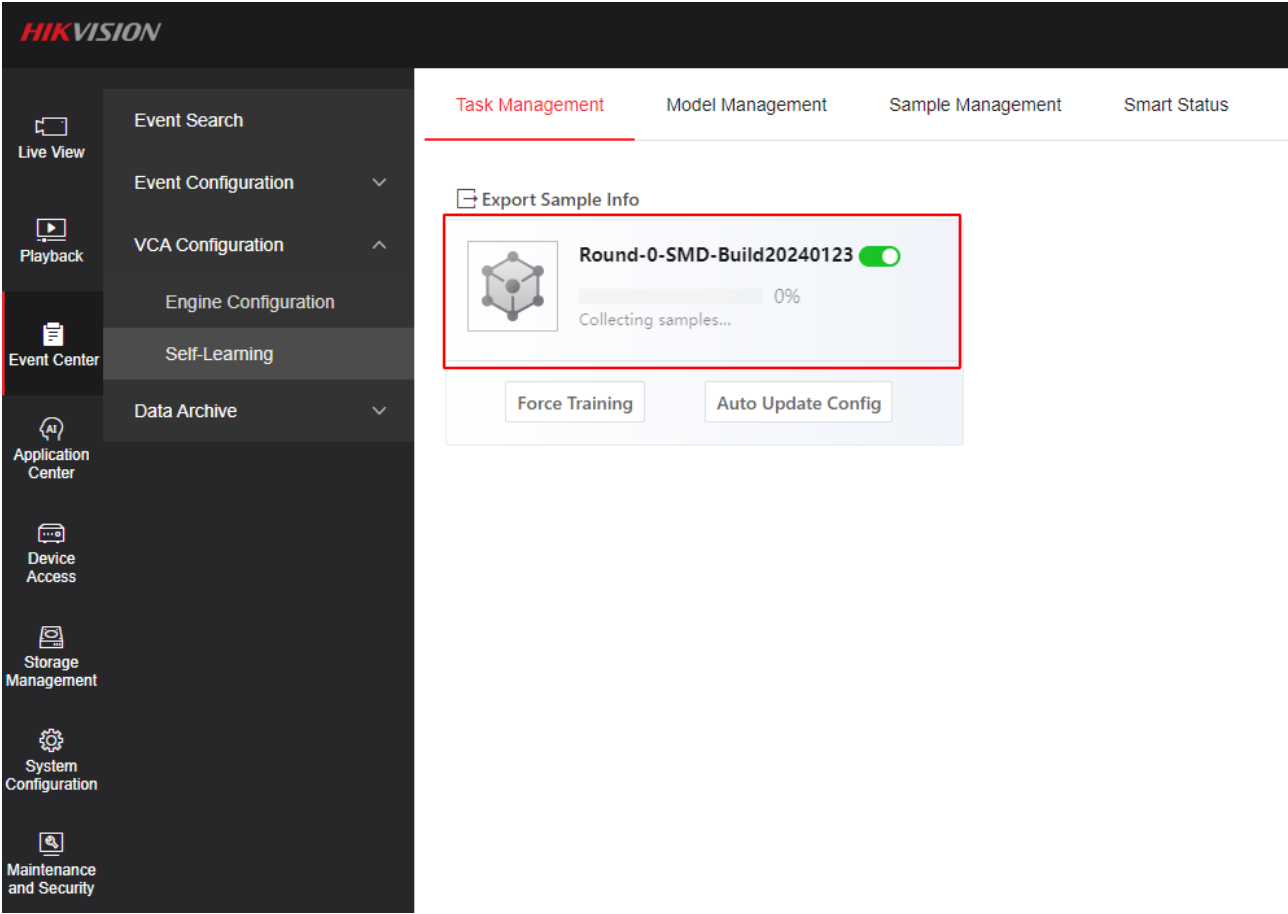
Title:	How to use Self-Learning on GUI5.0	Version:	v1.0	Date:	15/11/2024
Product:	NVR			Page:	2 of 3

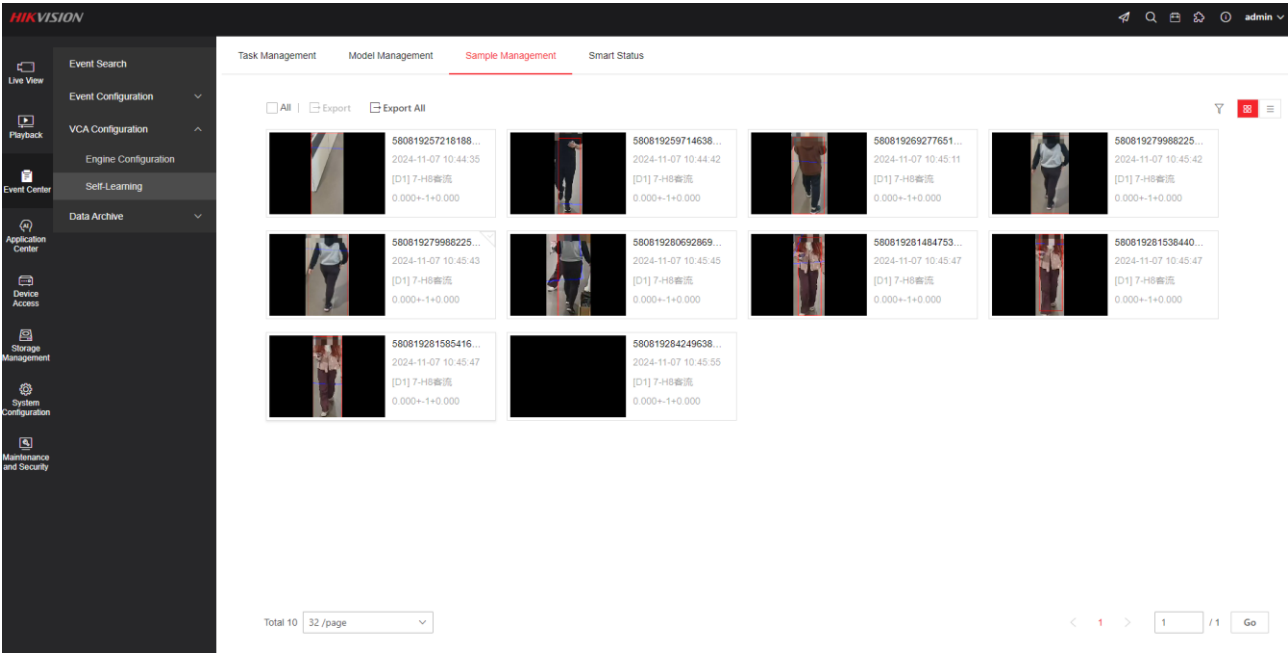


Step 2 : Switch Engine to Self-learning

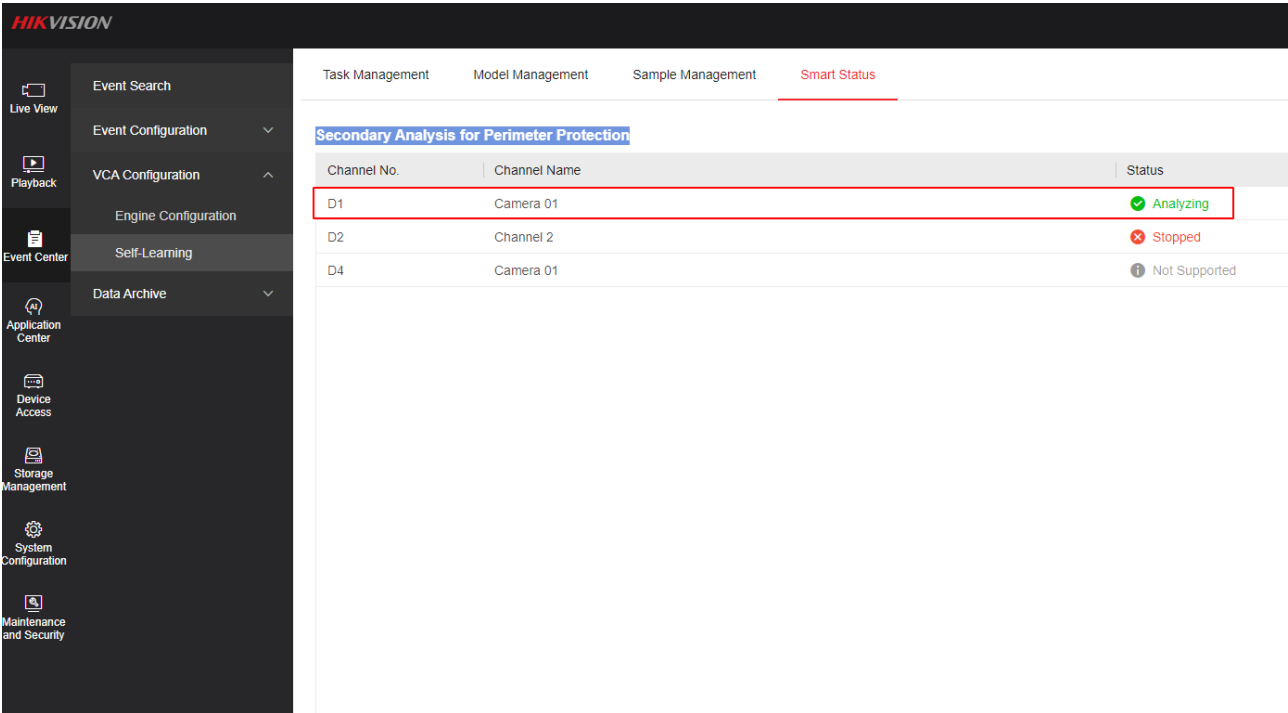


c) Check self-learning Progress and Secondary Analysis for Perimeter Protection





The capacity of the self-learning engine for secondary analysis is 4 per second



Step 3 : Training model

Once the sampel collection is complete, the model will be preprocessing
 Conditions to start training(Any one condition)

- 5W of samples in five days
- More than 5 days. Over 1W samples
- More than 30 days.Over 2,000 samples

Title:	How to use Self-Learning on GUI5.0	Version:	v1.0	Date:	15/11/2024
Product:	NVR			Page:	5 of 3

HIKVISION

Live View

Playback

Event Center

Application Center

Device Access

Storage Management

System Configuration

Maintenance and Security

Event Search

Event Configuration

VCA Configuration

Engine Configuration

Self-Learning

Data Archive

Task Management

Model Management

Sample Management

Smart Status

Export Sample Info

Round-0-SMD-Build20241023

Preprocessing...

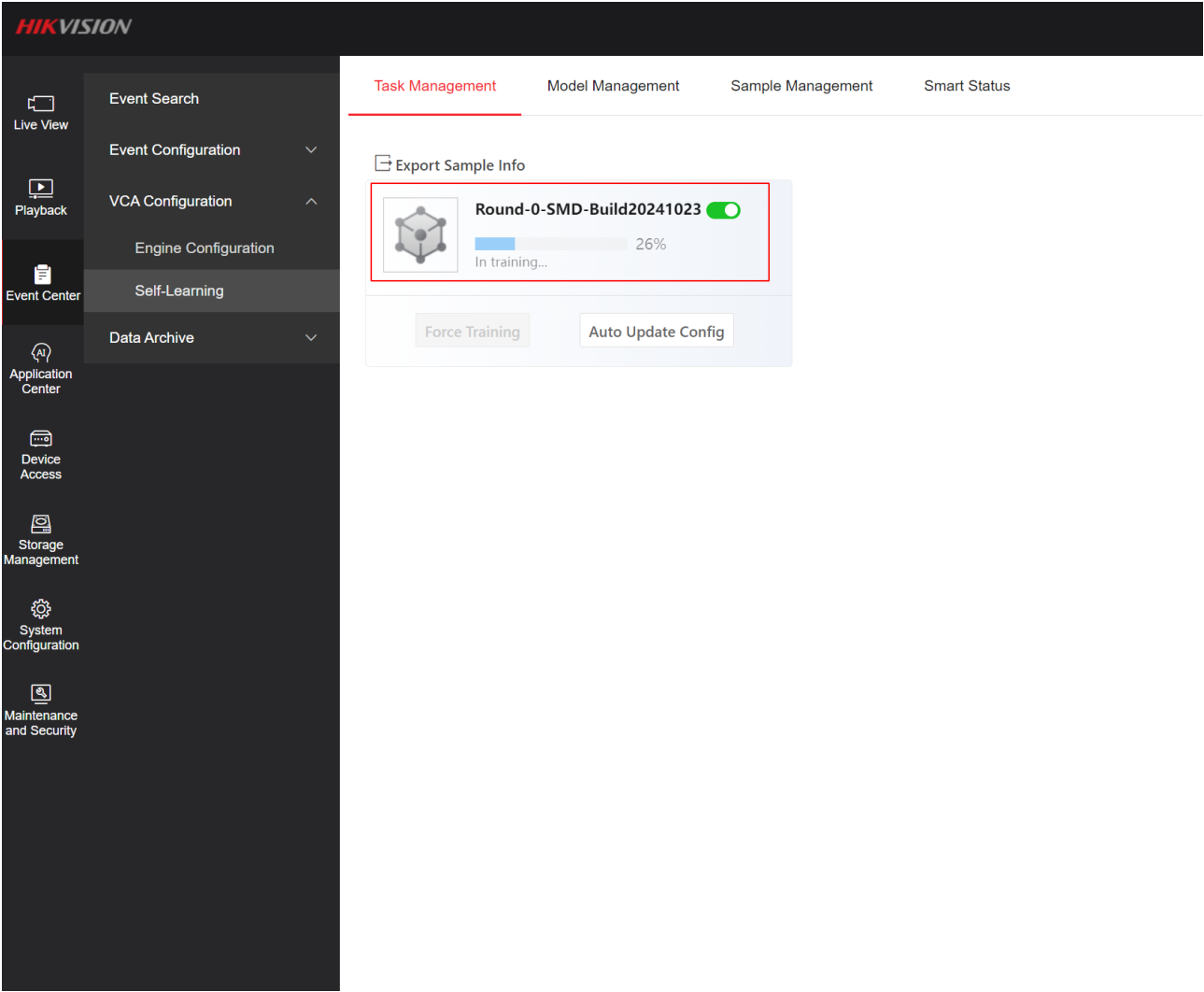
50%

Force Training

Auto Update Config

Title:	How to use Self-Learning on GUI5.0	Version:	v1.0	Date:	15/11/2024
Product:	NVR			Page:	6 of 3

After the preprocessing is completed, the model is in training



Title:	How to use Self-Learning on GUI5.0	Version:	v1.0	Date:	15/11/2024
Product:	NVR			Page:	7 of 3

Training Completed

HIKVISION

Live View

Playback

Event Center

Application Center

Device Access

Storage Management

System Configuration

Maintenance and Security

Event Search

Event Configuration

VCA Configuration

Engine Configuration

Self-Learning

Data Archive

Task Management

Model Management

Sample Management

Smart Status

Export Sample Info

Round-0-SMD-Build20241023

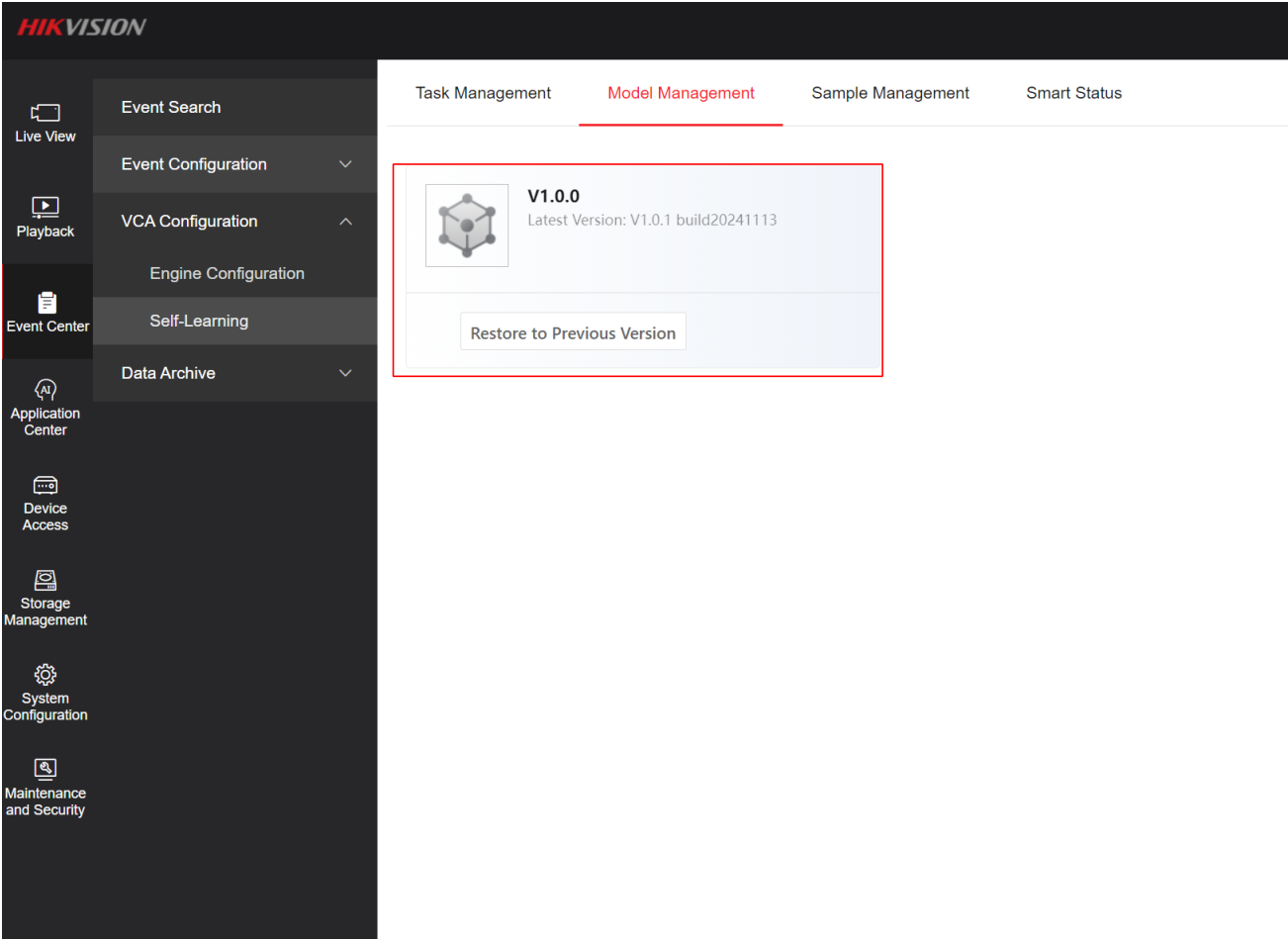
100%

Training completed

Force Training

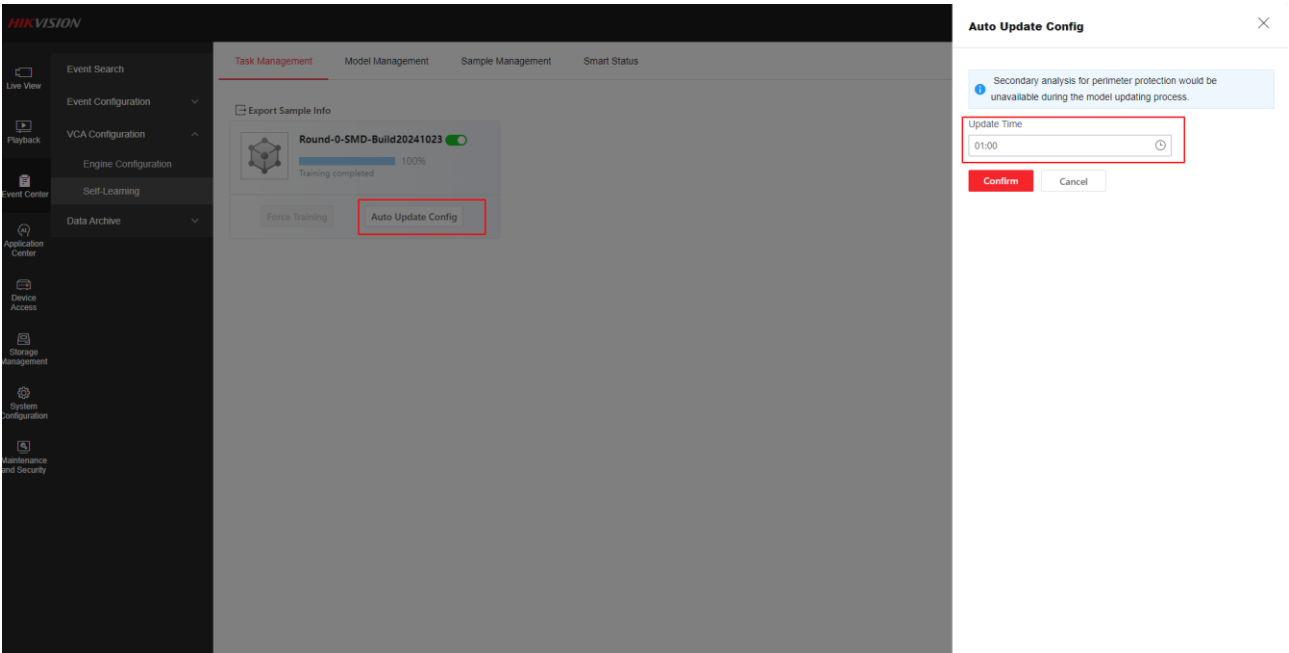
Auto Update Config

Title:	How to use Self-Learning on GUI5.0	Version:	v1.0	Date:	15/11/2024
Product:	NVR			Page:	8 of 3

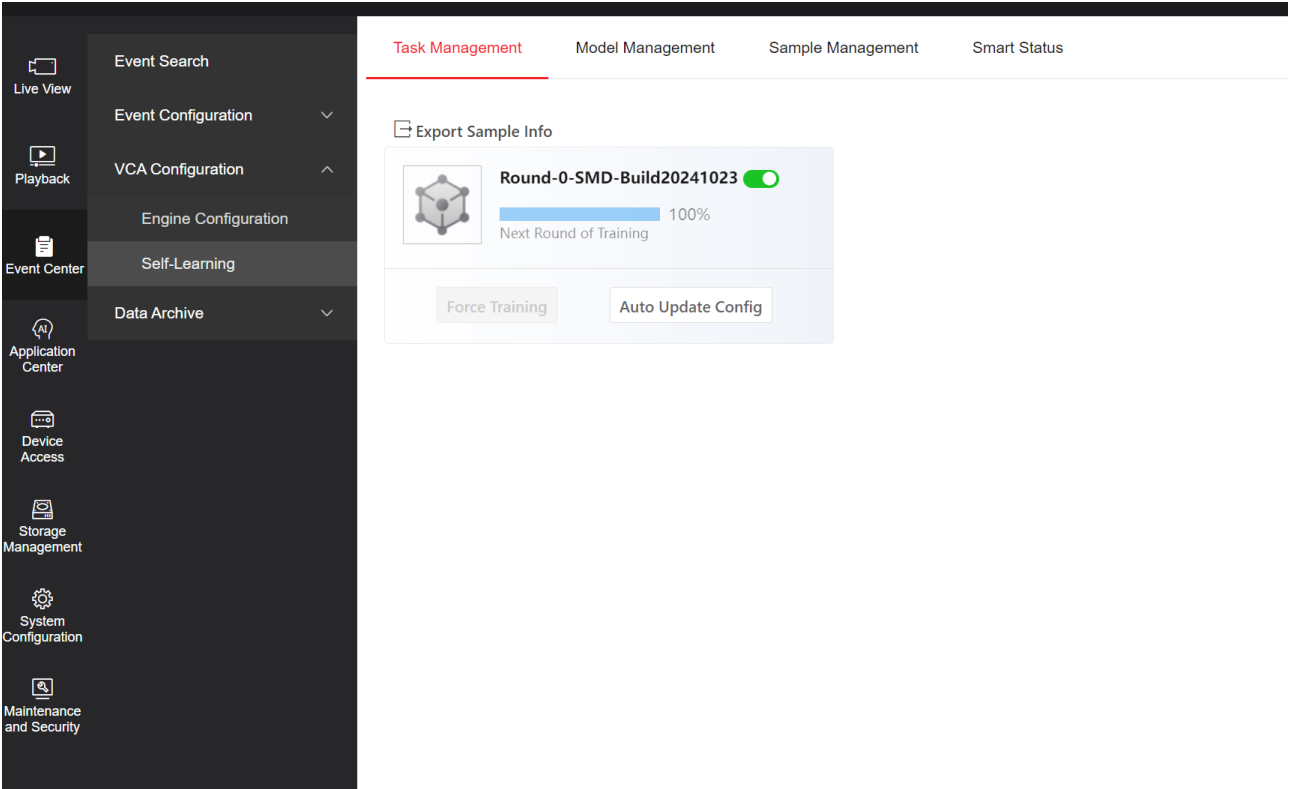


Step 4 : Loading Model

We can set the update time or update the model at 1:00 by default, At the same time the next model starts training

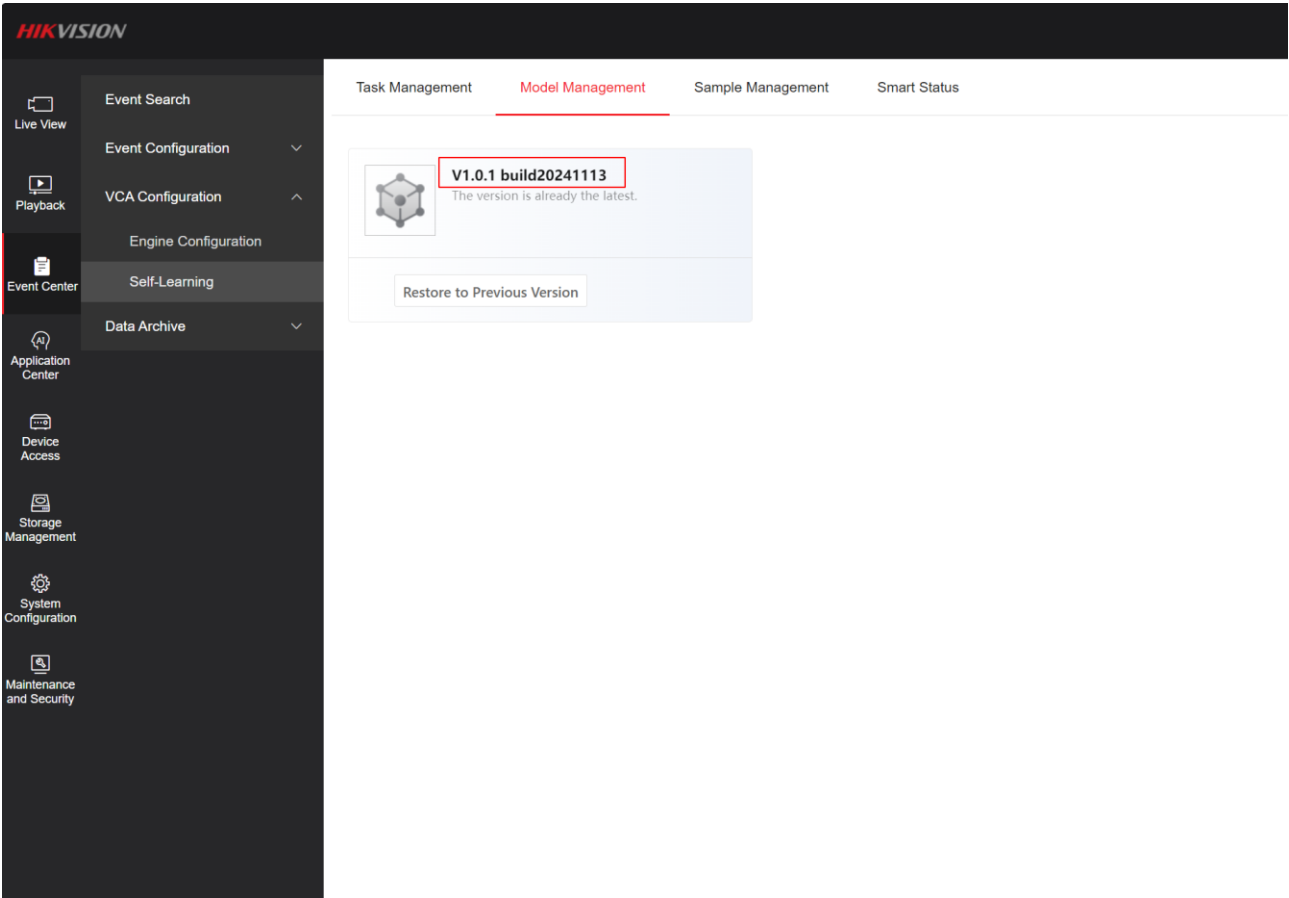


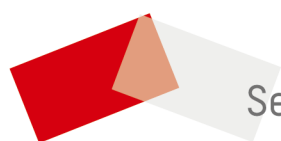
Title:	How to use Self-Learning on GUI5.0	Version:	v1.0	Date:	15/11/2024
Product:	NVR			Page:	9 of 3



After training, the model is updated again, and the algorithm begins to collect samples (V1.0.0 to V1.0.1 to.....)

The more iterations of the model, the more accurate the algorithm will be





See Far, Go Further