



How to configure 2XX7G3 (LI/SL/2U) camera based on H13 platform

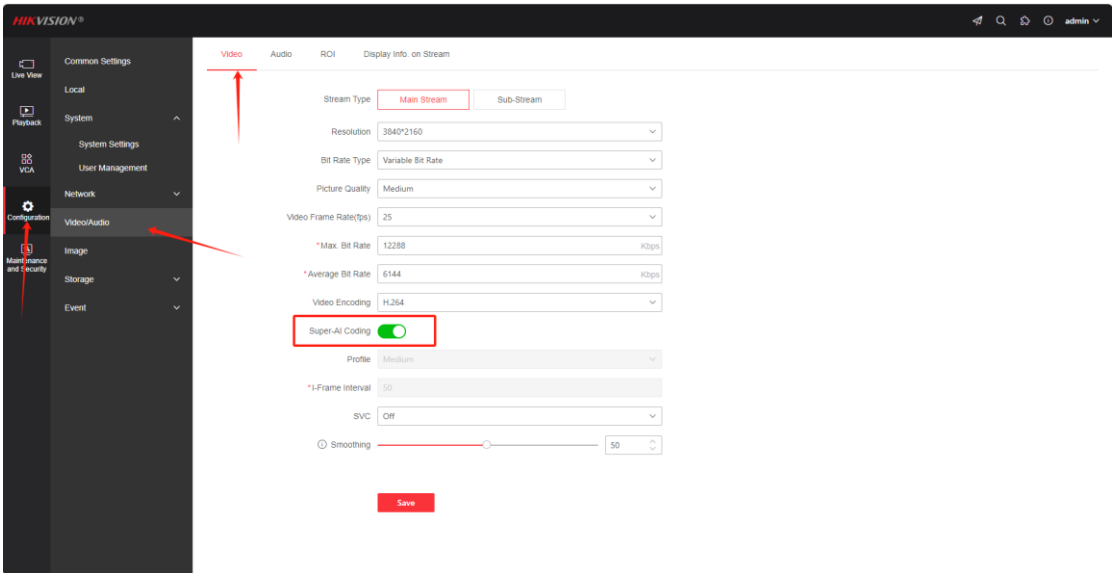
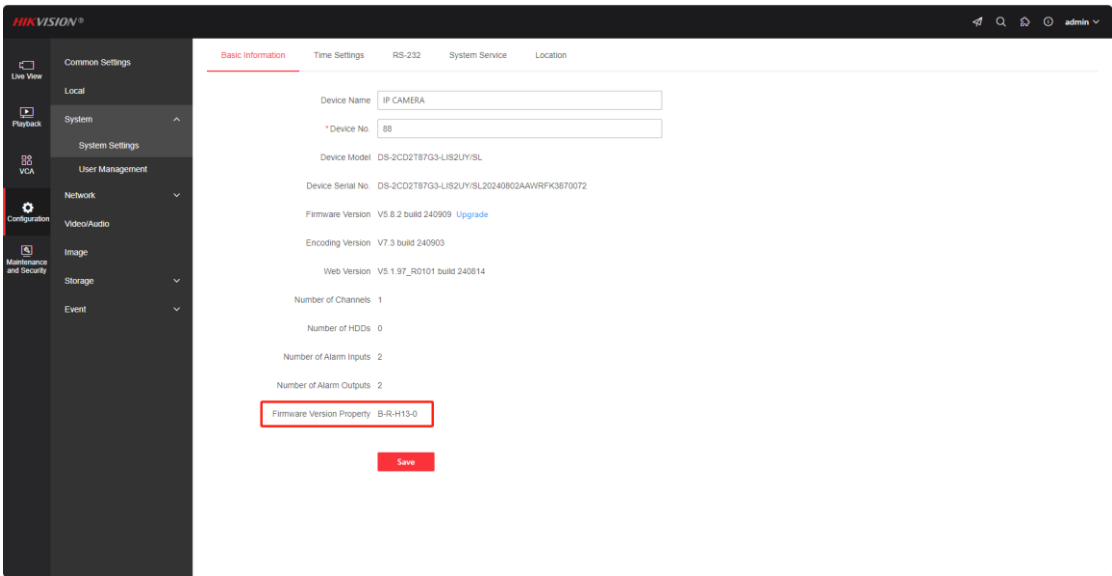
Title:	How to configure 2XX7G3 (LI/SL/2U) camera based on H13 platform	Version:	v1.0	Date:	2024/09/20
Product:	IPC			Page:	1 of 6

How to configure 2XX7G3 (LI/SL/2U) camera based on H13 platform

1. Configuration of H264+ H265+

【Configuration】 - 【Video/Audio】 - 【Video】

The H13 platform has changed the name of H264+H265+to Super AI Coding, which is enabled by default.



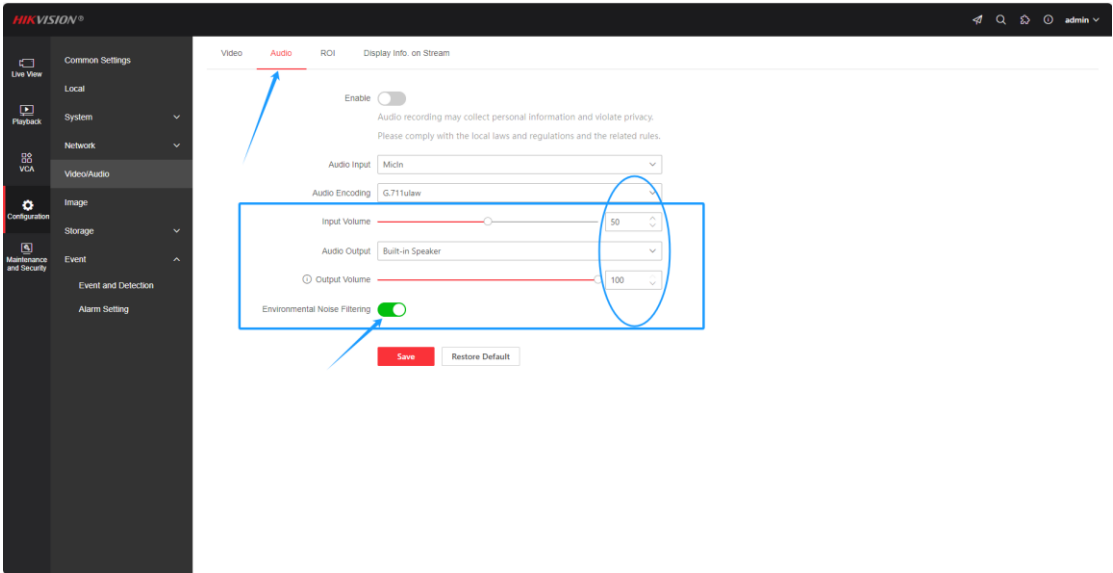
2. Audio configuration

【Configuration】 - 【Video/Audio】 - 【Audio】

Different with the old camera's two-way audio function, the new dual-Mic two-way camera

Title:	How to configure 2XX7G3 (LI/SL/2U) camera based on H13 platform	Version:	v1.0	Date:	2024/09/20
Product:	IPC			Page:	2 of 6

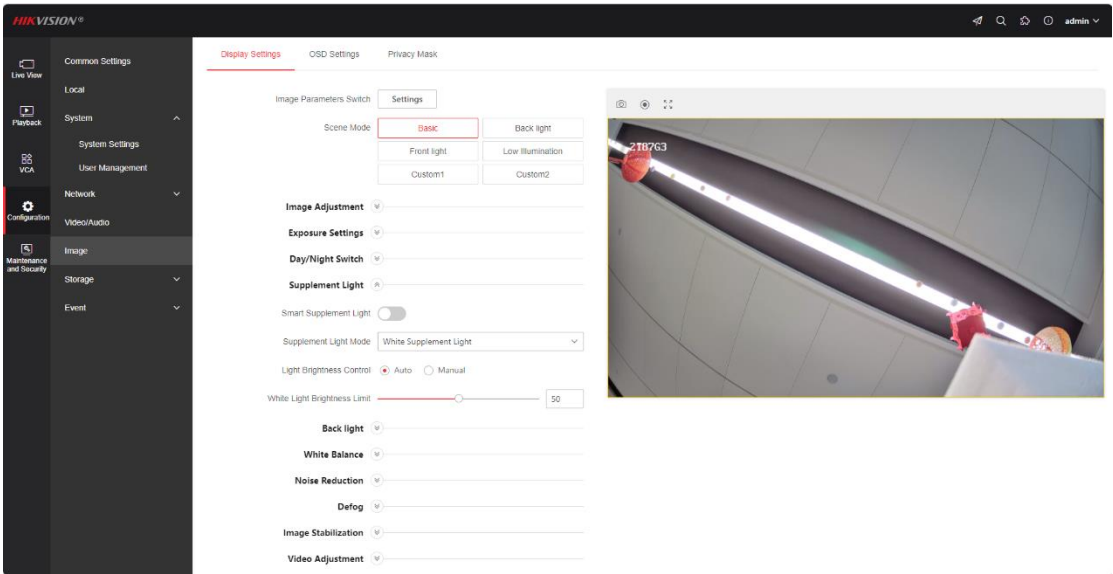
supports volume adjustment during two-way audio, and the volume adjustment interface has been uniformly changed from the linkage configuration interface to the [Video/Audio] - [Audio] interface. The default input volume is 50, and the default output volume is 100. And it also supports dual-Mic Environmental Noise Filtering, which is enabled by default.



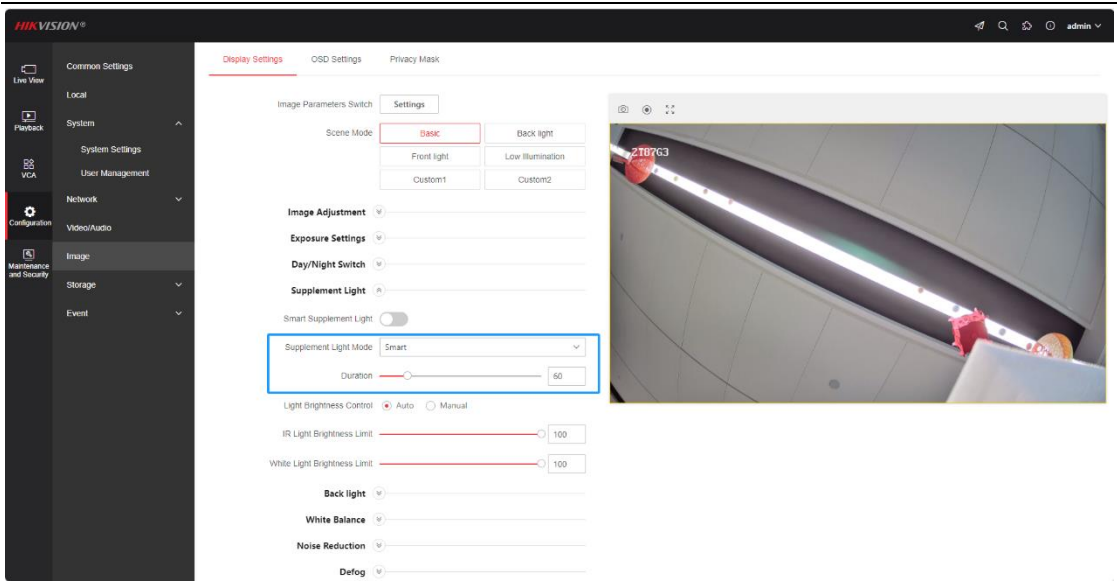
3. Smart hybrid light configuration

【Configuration】 - 【Image】 - 【Display Settings】 - 【Supplement Light】

The default supplement Light Mode is white light. After switching to smart mode, different with the old smart hybrid camera, the 2XX7G3 smart hybrid camera can be configured with a white light supplement light on duration of 10-300S, with a default of 60S.



Title:	How to configure 2XX7G3 (LI/SL/2U) camera based on H13 platform	Version:	v1.0	Date:	2024/09/20
Product:	IPC			Page:	3 of 6

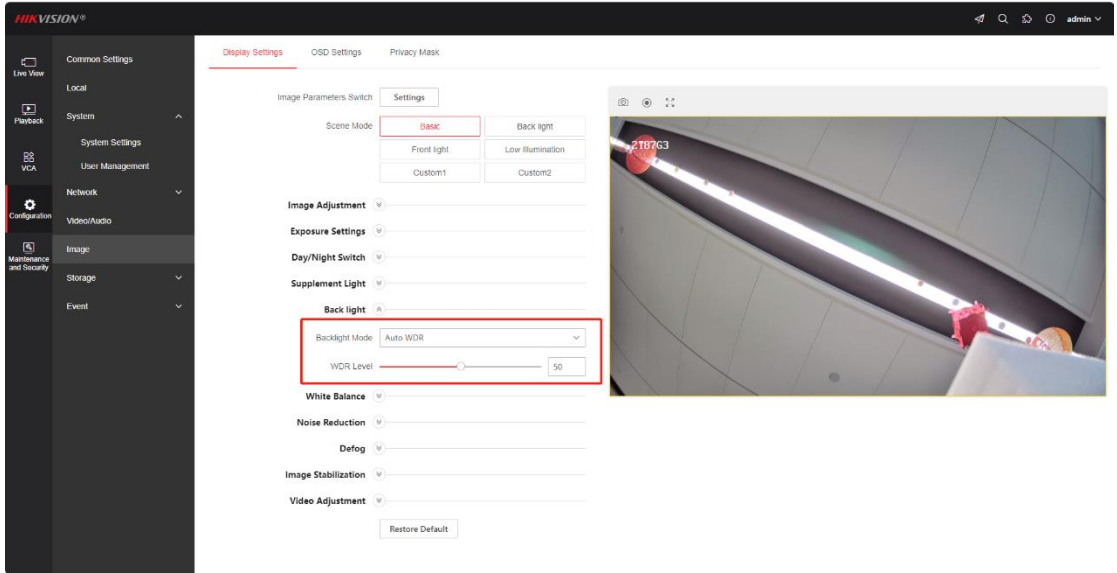


4. Smart hybrid light configuration

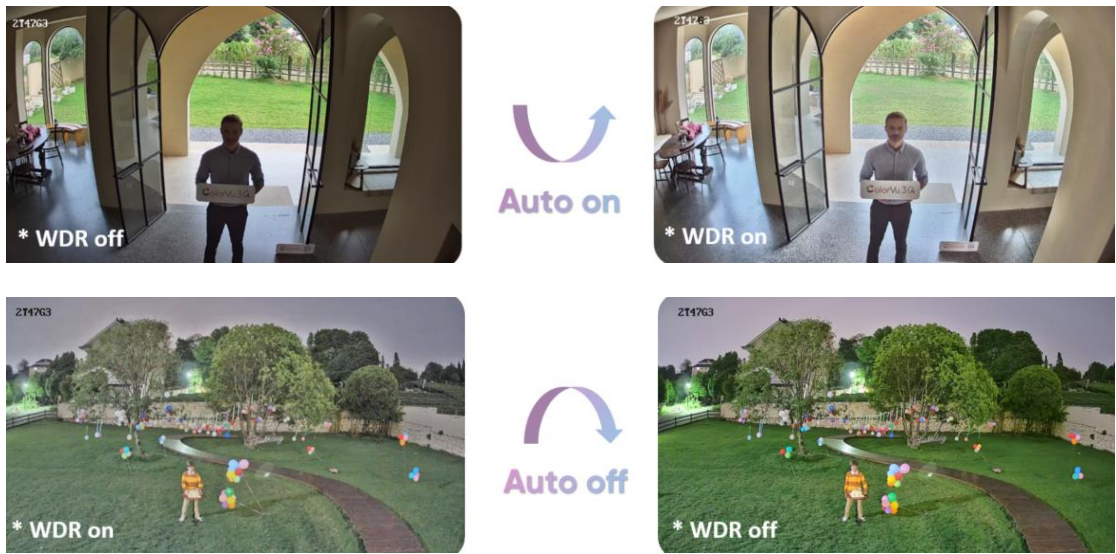
1). WDR

【Configuration】 - 【Image】 - 【Display Settings】 - 【Back light】

The 2XX7G3 camera supports Auto-WDR, with the default backlight mode being Auto-WDR and a default level of 50. In this mode, the camera will automatically turn on or off WDR based on changes in scene lighting and other factors.



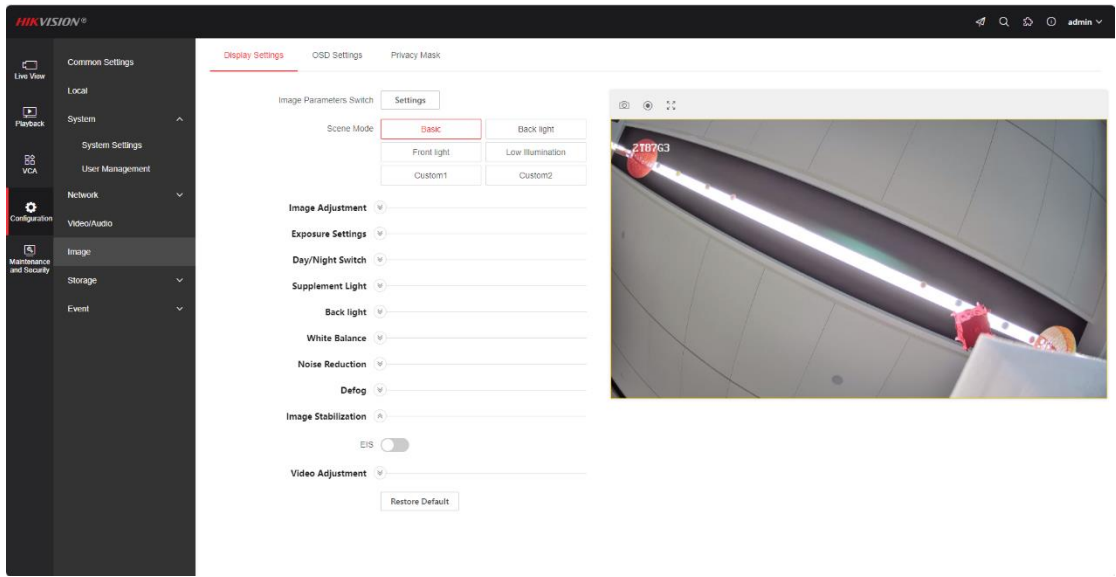
Title:	How to configure 2XX7G3 (LI/SL/2U) camera based on H13 platform	Version:	v1.0	Date:	2024/09/20
Product:	IPC			Page:	4 of 6



2). EIS

【Configuration】 - 【Image】 - 【Display Settings】 - 【Image Stabilization】

The 2XX7G3 camera supports EIS electronic image stabilization, which is turned off by default. When the camera installation environment experiences shaking due to external factors, EIS can be turned on to improve the image quality.



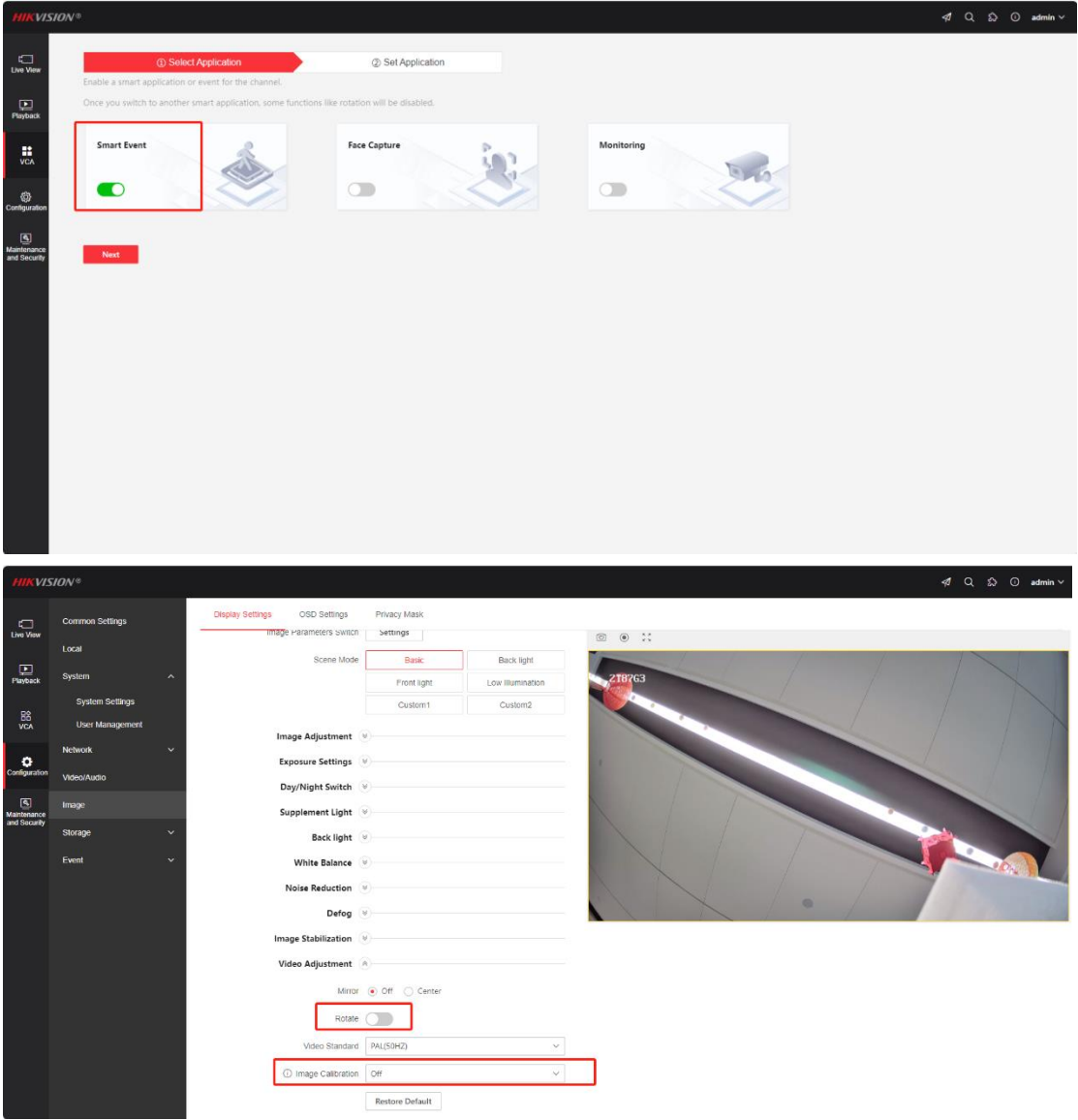
3). Rotate mode and Image Calibration

【Configuration】 - 【Image】 - 【Display Settings】 - 【Video Adjustment】

The 2XX7G3 camera supports rotate mode, which is turned off by default. Different with older models such as the G5 platform, which require switching to normal monitoring mode to support rotate mode, the 2XX7G3 camera still supports rotate mode in perimeter mode.

Title:	How to configure 2XX7G3 (LI/SL/2U) camera based on H13 platform	Version:	v1.0	Date:	2024/09/20
Product:	IPC			Page:	5 of 6

The fixed focus camera of 2XX7G3 supports image calibration and is turned off by default. If some scenes require image calibration, it is recommended to use level 1 for devices with 4MM lenses. It is recommended to use level 2 for equipment with a 2.8mm lens. It is recommended to use level 3 for equipment with a 2MM lens; Specific adjustments can be made according to actual scenarios.



Title:	How to configure 2XX7G3 (LI/SL/2U) camera based on H13 platform	Version:	v1.0	Date:	2024/09/20
Product:	IPC			Page:	6 of 6

