

HIKVISION®

HeatPro

Hikvision HeatPro Series Thermal Cameras Professional Protection Made Simple

Engineered for any light

Sees the unseen

Radically reduces false alarms



Perimeter Protection

Improved Target Identification

Person and vehicle targets are accurately distinguished and classified.



Classified Object Detection

Conventional cameras may fail to detect the overlapping of person and vehicle targets. Hikvision's HeatPro Series Thermal Cameras excel with classified object detection, distinguishing persons and vehicles. This advanced capability ensures that users can focus their attention and respond only to targets that truly matter.



Grouping Detection

Even when people gather in groups, HeatPro Series Thermal Cameras can accurately identify and classify each individual with precision.

Higher Agility and Adaptability

Targets are detected quickly, even in very challenging conditions.

Challenging Temperature Conditions

When exposed to high temperatures, background infrared radiation can be quite similar to that of the person or vehicle targets. HeatPro Series Thermal Cameras accurately distinguish targets from their background, even with limited temperature-data differences.



Challenging Viewing Angles

HeatPro Series Thermal Cameras have superior movement detection capabilities, they will detect even the slightest movement of targets.



3-Step VCA Configuration

Simpler and faster deployment for SMB users with down to 30s setup time.



1

Enable VCA



2

Draw a detection area



3

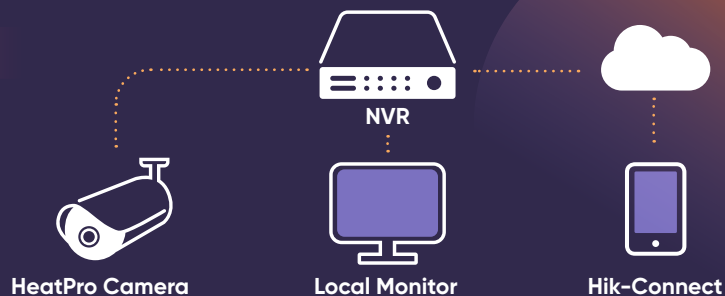
Set human/vehicle as the target

Demand-based Product Applications

HeatPro Series Thermal Cameras combine with Hikvision's various products to meet diverse needs of users.

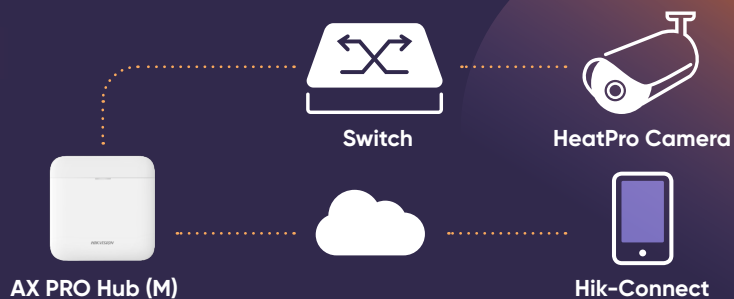
Fundamental Protection

Connected to an NVR, HeatPro cameras provide highly-efficient security protection for places like villas, communities, and grocery stores.



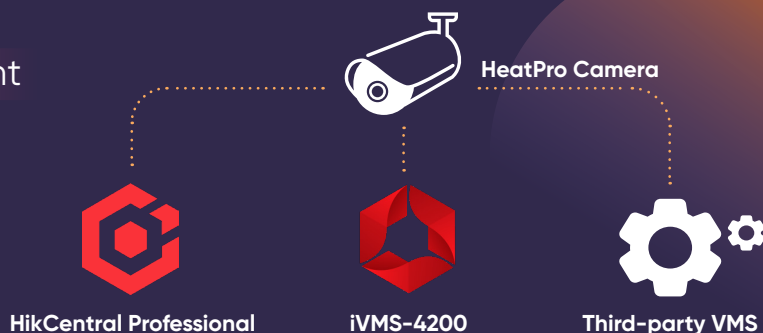
Intrusion Verification

Linked with AX PRO Hub, HeatPro cameras capture real-time video clips to verify alarms whenever an intrusion event happens.



Large-scale Deployment

HeatPro cameras can be deployed on a large scale for more complex projects like chain stores and industrial parks, and managed in a centralized way.



Perimeter Protection

Affordable excellence for increased security



Strong Environmental Adaptability



Colourful Imaging 24/7



Small-range Perimeter Protection

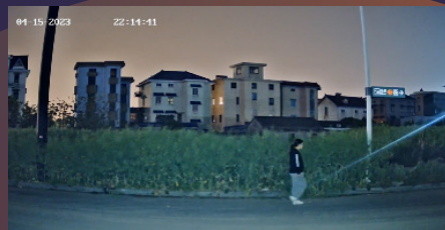


Visual & Auditory Warnings

Conventional thermal cameras tend to be overpriced and unaffordable for convenience stores, small office buildings, and high-end residences.

However, these scenarios often require thermal cameras for comprehensive security in challenging conditions – such as strong backlight or dense fog.

To address these concerns, HeatPro Lite Cameras are an excellent solution. Plus, they are equipped with by Hikvision's ColorVu technology to deliver colourful, detailed images, even in very low light. With HeatPro Lite Cameras, users get comprehensive security solutions while staying within their budget.



VCA Performance

Person or Vehicle VCA Detection Distance



VCA Range



VCA Range

DS-2TD2608-1/QA 11 m 33 m

DS-2TDxx28-3/QA 29 m 76 m

DS-2TD2628-10/QA 78 m 204 m

DS-2TD1228-2/QA 17 m 50 m

DS-2TDxx28-7/QA 55 m 145 m

DS-2TD2608-2/QA 21 m 63 m

Advantages of Thermal Cameras for Fire Detection



**Early detection
and warning**



**Temperature
visualization**



**Support for
flexible rules & alarms**

Hikvision's Thermography Cameras are being used in various applications around the world to detect temperature anomalies before a fire starts, finding hot spots and invisible defects on machinery or electrical systems that could lead to critical failures. These advanced cameras are also used for surveying areas that are hard to reach with conventional measurement tools.

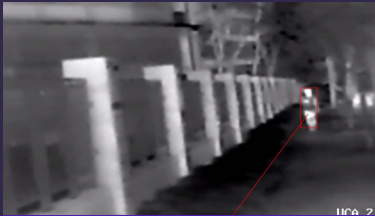
In one example application, Hikvision's thermography cameras effectively monitor temperature changes at a series of electric vehicle (EV) charging stations and send alerts to first responders, reducing time between detection and response. These cameras detect fires before they spread, vastly minimizing safety risks or catastrophic losses.

Other common applications include office buildings, warehouses and villas. Find out how these amazing cameras can work for you!



Perimeter Protection & Fire Detection

Application Scenarios



Villas/Communities



Office Buildings



Construction Sites



Parking Lots



Electric vehicle charging stations



Warehouses

Product Showcase

Thermal cameras

Thermography cameras

256 x 192



DS-2TD1228-2/3/7 QA
DS-2TD2628-3/7/10 QA
DS-2TD4228-7/10 S2

DS-2TD1228T-2/3/7 QA
DS-2TD2628T-3/7/10 QA
DS-2TD4228T-7/10 S2

96 x 72



DS-2TD2608-1/2 QA

Dedicated to bringing professional protection solutions to the mass market, Hikvision's HeatPro Series Thermal Cameras provide perimeter protection with unparalleled accuracy, and fire detection with remarkable sensitivity. The cameras hit the target for cost and performance in a variety of residential, commercial and industrial applications.

Follow us on social media to get the latest product and solution information



Hikvision Canada



Hikvision Canada



HikvisionCanada



Hikvision Canada



hikvision_ca

www.hikvision.ca



HIKVISION