

**HIKVISION**<sup>®</sup>



**HeatPro**

# Hikvision HeatPro Series Thermal Cameras

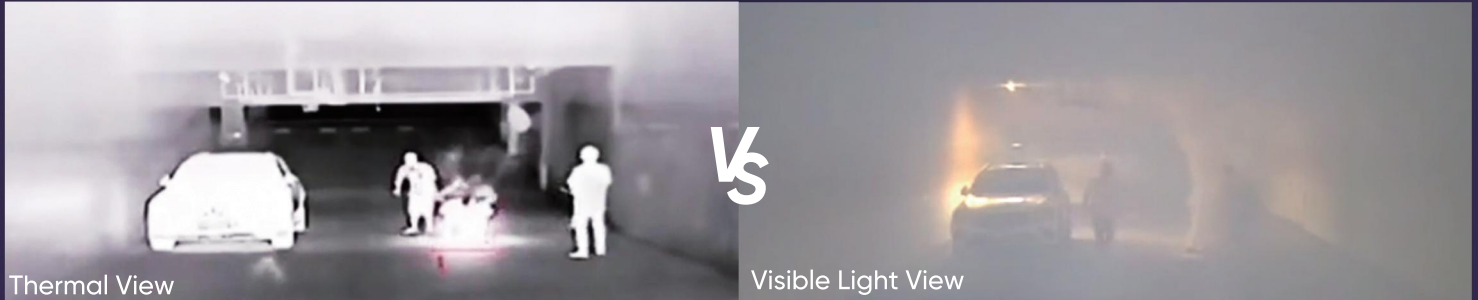
Professional Protection Made Simple



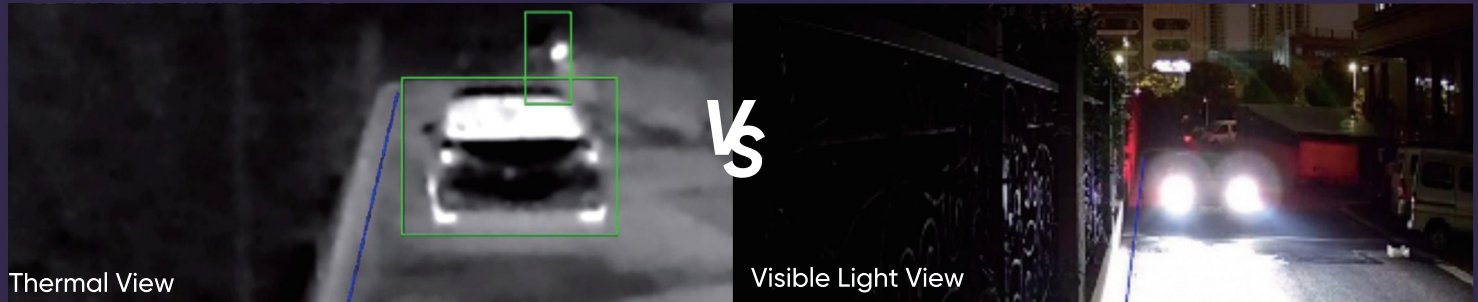
Dedicated to bringing professional protection solutions to the mass market, Hikvision's HeatPro Series Thermal Cameras provide perimeter protection with unparalleled accuracy, and fire detection with superlative sensitivity. The cameras hit the target for cost and performance in a variety of residential, commercial and industrial applications.

# THERMAL ADVANTAGES

## Super Environmental Adaptability



Spots the fire source right away, even in heavy smoke



Detect target in strong light/low light/total darkness

## See the Unseen



Detect target hidden in bush

## Extended Distance



Covers much longer distances and requires fewer devices to do so



# PERIMETER PROTECTION

Note: VCA is short for Video Content Analysis, referring to the camera's ability to analyze video footage to identify any event automatically.

## SHORT-RANGE PROTECTION

### 3-steps VCA

With a 3-step configuration, users can easily set up VCA rules for the camera with no need to calibrate manually.



**Enable VCA**



**Draw a detection area**



**Set human/vehicle as the target**

### Human & Vehicle Classification

Hikvision's VCA 2.0 is an intelligent video content analysis technology based on deep learning algorithms. It detects and classifies targets into human or vehicle types while filtering out the other objects.

**Thermal Lens Detection**



**Deep Learning Classification**



### Light & Audio Warning

Our cameras detect intrusion threats in a timely manner and trigger the strobe light and customizable audio alarms. You can achieve arm or disarm easily with a few taps via Hik-Connect.





RESIDENTIALS



PARKING LOTS



CONSTRUCTION SITES

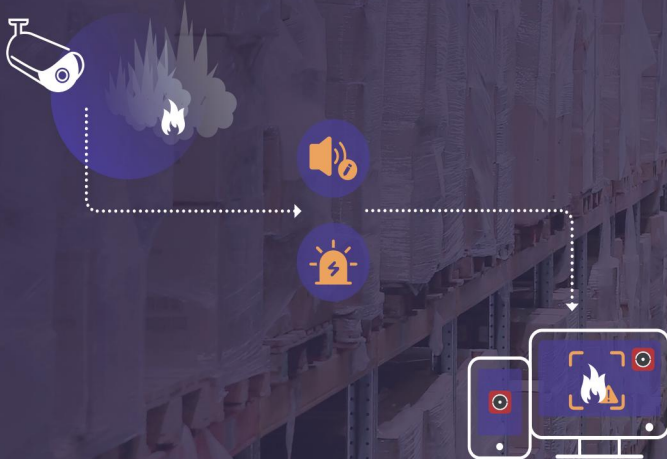


BUSINESS PARKS

# FIRE PREVENTION

## Fire and Temperature Detection

Provides temperature measurement, fire detection, and smoking detection for fast and visible detection.



## Non-contact

Non-contact method fire-prevention without effect on normal working of monitor target.

## Visualized

Heating distribution could be caught clearly help in locate risk point easily.

## Sun Reflection

our thermography cameras can analysis and flit the potential false alarm caused by sun reflection

## Forklift Filter

With the help of an AI algorithm, Hikvision thermography cameras recognize and ignore the heat from forklift engines to reduce unwanted alarms.

## Fast Warning

Caught temperature-exception in only few seconds helps protect your property

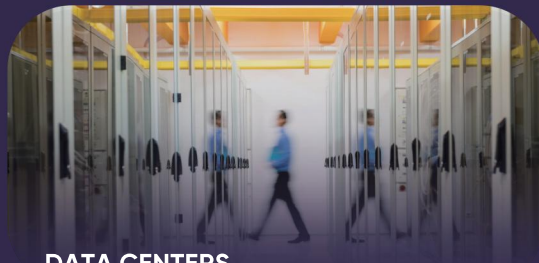
## Light & Audio Warning

Detects threats in a timely manner and triggers a strobe light with customizable audio alarms.





WAREHOUSES



DATA CENTERS



E-CHARGING STATIONS



FACTORIES



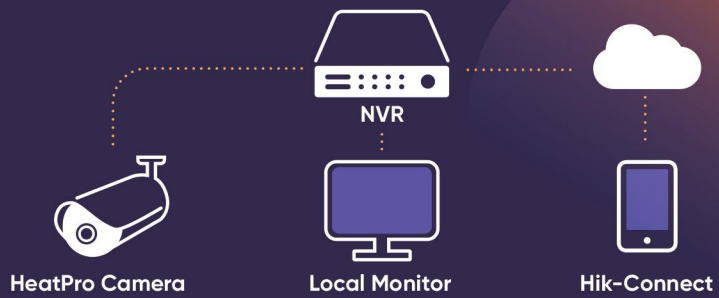
BATTERY STORAGE FACTORIES

## Demand-based Product Applications

Simpler and faster deployment for SMB users

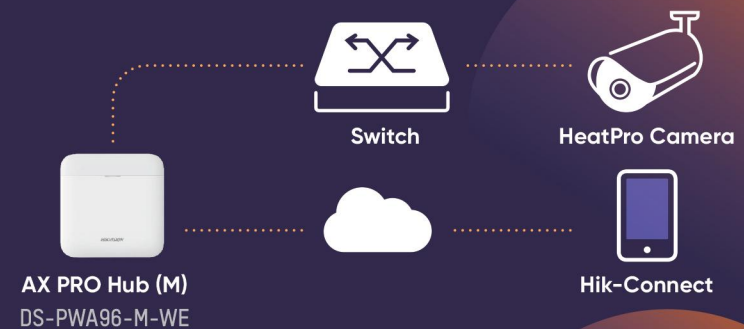
### Fundamental Protection

Connected to an NVR, HeatPro cameras provide highly-efficient security protection of places like villas, communities, and groceries.



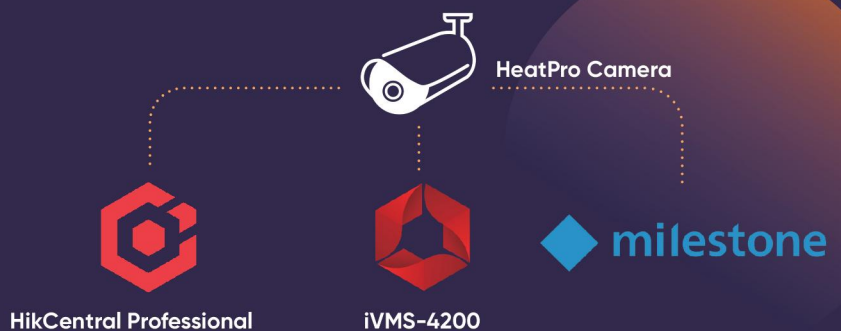
### Intrusion Verification

Linked with AX PRO Hub, HeatPro cameras capture real-time video clips to verify alarms whenever an intrusion event happens.



### Large-scale Deployment

HeatPro cameras can be deployed on a large scale for more complex projects like chain stores and industrial parks, and managed in a centralized way.



# PRODUCT MODELS

## DS-2TD2628/QA

Thermal Network  
Bullet Camera



Thermal: 256 × 192, 12 μm, Optical: 2688 × 1520  
Lens (thermal): 3 / 7 / 10 mm  
Lens (optical): 4 / 6 / 8 mm  
VCA : Line crossing / Intrusion / Region entrance / Region exiting Audible Alert and Strobe Light  
Temperature Exception  
Temperature Exception Range : -20 to 150°C  
Temperature Accuracy : ±8°C  
Working Temperature :  
-40°C to 65°C (-40° F to 149° F)  
IP67

## DS-2TD1228/QA

Thermal Network  
Turret Camera



Thermal: 256 × 192, 12 μm, Optical: 2688 × 1520  
Lens (thermal) : 2 / 3 / 7 mm  
Lens (optical) : 2 / 4 / 6 mm  
VCA : Line crossing / Intrusion / Region entrance / Region exiting Audible Alert and Strobe Light  
Temperature Exception  
Temperature Exception Range : -20 to 150°C  
Temperature Accuracy : ±8°C  
Working Temperature :  
-40°C to 65°C (-40° F to 149° F)  
IP66

## DS-2TD2617/QA

Bi-Spectrum Network  
Bullet Camera



Thermal : 160 × 120, 17 μm; Optical : 2688 × 1520  
Lens (thermal) : 3 / 6 / 10 mm  
Lens (Optical) : 4 / 6 / 8 mm  
VCA : Line crossing / Intrusion / Region entrance / Region exiting Audible Alert and Strobe Light  
Temperature Exception  
Temperature Exception Range : -20 to 150°C  
Temperature Accuracy : ±8°C  
Working Temperature :  
-40°C to 65°C (-40° F to 149° F)  
IP67

## DS-2TD1217/QA

Thermal Network  
Turret Camera



Thermal : 160 × 120, 17 μm; Optical : 2688 × 1520  
Lens (thermal) : 2 / 3 / 7 mm  
Lens (Optical) : 2 / 4 / 6 mm  
VCA : Line crossing / Intrusion / Region entrance / Region exiting Audible Alert and Strobe Light  
Temperature Exception  
Temperature Exception Range : -20 to 150°C  
Temperature Accuracy : ±8°C  
Working Temperature :  
-40°C to 65°C (-40° F to 149° F)  
IP66

## DS-2TD4228-10/W

Network Bi-Spectrum  
Speed Dome



Thermal: 256 × 192, 12 μm  
Optical: 1920 × 1080  
Lens (thermal) : 10 mm; Optical: 4.8-153 mm  
FOV: 10mm: 18° × 13.5°  
VCA : Line crossing / Intrusion / Region entrance / Region exiting  
Temperature Exception  
Temperature Exception Range : -20 to 150°C  
Temperature Accuracy : ±8°C  
Working Temperature :  
-40°C to 65°C (-40° F to 149° F)  
IP66

## DS-2TD4228T-10/W

Network Bi-Spectrum  
Speed Dome



Thermal: 256 × 192, 12 μm  
Optical: 2688 × 1520  
Lens (Thermal): 10 mm; Optical: 4.8-153 mm, 32X  
FOV: 10 mm: 18 × 13.5°  
VCA: Line crossing / Intrusion / Region entry & exit  
Temperature Exception / Anomaly  
Temperature Exception Range:  
-20 to 550°C (-4 to +1,022°F)  
Temperature Accuracy: Max (±2°C, ±2%)  
Alarm Input: Up to 7 ch. of input (0-5 VDC)  
Alarm Output: 2 ch. of relay outputs, alarm response actions configurable  
Operating Temperature: -40 to 65°C (-40 to 149° F)  
IP66

## DS-2TD2628T/QA

Thermographic Network  
Bullet Camera



Thermal: 256 × 192, 12 μm, Optical: 2688 × 1520  
Lens (Thermal): 3 / 7 mm  
Lens (Optical): 4 / 6 mm  
FOV (Thermal): 3 mm: 50.0 × 37.3°; 7 mm: 24.9 × 18.7° Audible Alert and Strobe Light  
Temperature Exception / Anomaly  
Temperature Exception Range: -20 to 150° C  
Temperature Accuracy: ±8° C  
Operating Temperature: -40 to 65° C  
(-40 to 149° F)  
IP67

## DS-2TD1228T/QA

Thermographic Network  
Turret Camera



Thermal: 256 × 192, 12 μm, Optical: 2688 × 1520  
Lens (Thermal): 2 / 3 mm  
Lens (Optical): 2 / 4 mm  
FOV (Thermal): 2 mm: 90.0 × 65.4°; 3 mm: 50.0 × 37.3° Audible Alert and Strobe Light  
Temperature Exception / Anomaly  
Temperature Exception Range: -20 to 150° C  
Temperature Accuracy: ±8° C  
Operating Temperature: -40 to 65° C  
(-40 to 149° F)  
IP66

## DS-2TD3017T

Thermographic Network  
Cube Camera



Thermal: 160 × 120, 17 μm;  
Optical: 1600 × 1200  
Lens (Thermal): 2 / 3 mm  
Lens (Optical): 2 mm  
FOV (Thermal): 2 mm: 90.0 × 66.4°; 3 mm: 50.0 × 37.2° Audible Alert and Strobe Light  
Temperature Exception / Anomaly  
Temperature Exception Range: -20 to 150° C / 20 to 550° C  
Temperature Accuracy: ±2° C or 2%  
Operating Temperature: -20 to 50° C  
(-4 to 122° F)  
IP67

## Effective Coverage Short Range (20-77 m)

HeatPro Series Cameras



VCA Range  
(Humans: 1.8 × 0.5 m)



VCA Range  
(Vehicles: 1.4 × 4.0 m)

DS-2TDxx17-2/QA



FOV: 90° × 66.4°

DS-2TD1228-2/QA



FOV: 90° × 65°

DS-2TDxx17-3/QA



FOV: 50° × 37.2°

DS-2TDxx28-3/QA



FOV: 84° × 13°

DS-2TDxx17-6/QA



FOV: 25° × 18.7°

DS-2TDxx28-7/QA



FOV: 25° × 19°

DS-2TD2617-10/QA



FOV: 16° × 12°

DS-2TD4228-10/QA



FOV: 18° × 14°

## Effective Coverage Small & Medium Area Fire Prevention



Temperature Measurement  
(Object: 0.2 × 0.2 m)



Temperature Measurement  
(Object: 0.5 × 0.5 m)

DS-2TD1228T-2/QA



FOV: 84° × 13°

DS-2TD3017T-2/V



FOV: 90° × 66.4°

DS-2TD1228T-3/QA  
DS-2TD2628T-3/QA



FOV: 25° × 19°

DS-2TD3017T-3/V



FOV: 50° × 37.2°

DS-2TD1228T-7/QA  
DS-2TD2628T-7/QA



FOV: 18° × 14°

DS-2TD4228T-10/W



FOV: 18° × 14°