

Flexible Security, Environmental Sustainability

Solar-powered Security Camera Setups

What is a solar-powered camera setup?

By design, Hikvision Solar offers rapid deployable solutions to meet many applications, where local power is not an option: farming (live-stock monitoring, feed & water levels), illegal activity (dumping & hooning), building & construction, forestry, temporary event deployment, with smart analytics on board reducing false alarms, with capability to send event and detection notifications being pushed to the included app Hik-Connect. No subscriptions or monthly fees, letting you know when to look and where to look.

Hikvision Solar solutions are 4G Ready, with SD Storage slot, including Solar Panel, Lithium Battery, together with Engineered Mounting Bracket System allowing for rapid setup and deployment.



Scan to learn more



4G Communication
(Support Hik-Connect Service,
No Subscription Cost)



Long Battery Life



Low Power
Consumption



Quick Assembly
(Allowing for Rapid
Deployment)



Engineered Solid
and Durable

4K ColorVu Solar-Powered Camera

Provides vivid colour images in low light

- **Power**
80W Solar Panel, 30AH battery, up to 4.5 days battery life in cloudy
- **Data Transmission**
Built-in 4G module, supports all Australia/New Zealand mobile networks
- **Camera**
8MP Ultra HD, ColorVu, AcuSense

ColorVu

AcuSense

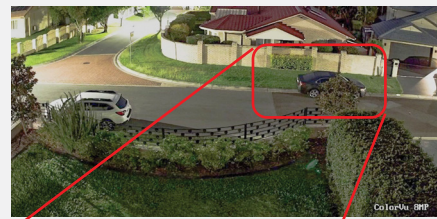
4K
ULTRA HD



24/7 Vivid Colour



Conventional Camera



ColorVu Camera

Thermal Solar-Powered Camera

The first line of defence, stay ahead of the flame

- **Power**
80W Solar Panel, 30AH battery, up to 3.5 days battery life in cloudy
- **Data Transmission**
Built-in 4G module, supports all Australia/New Zealand mobile networks
- **Camera**
Thermal & Visible Bi-spectrum
Thermal: 256 x 192, 12µm; Optical: 4MP



See the Unseen



Hikvision HeatPro series thermal camera



Conventional optical camera



Hikvision HeatPro series thermal camera



Conventional optical camera

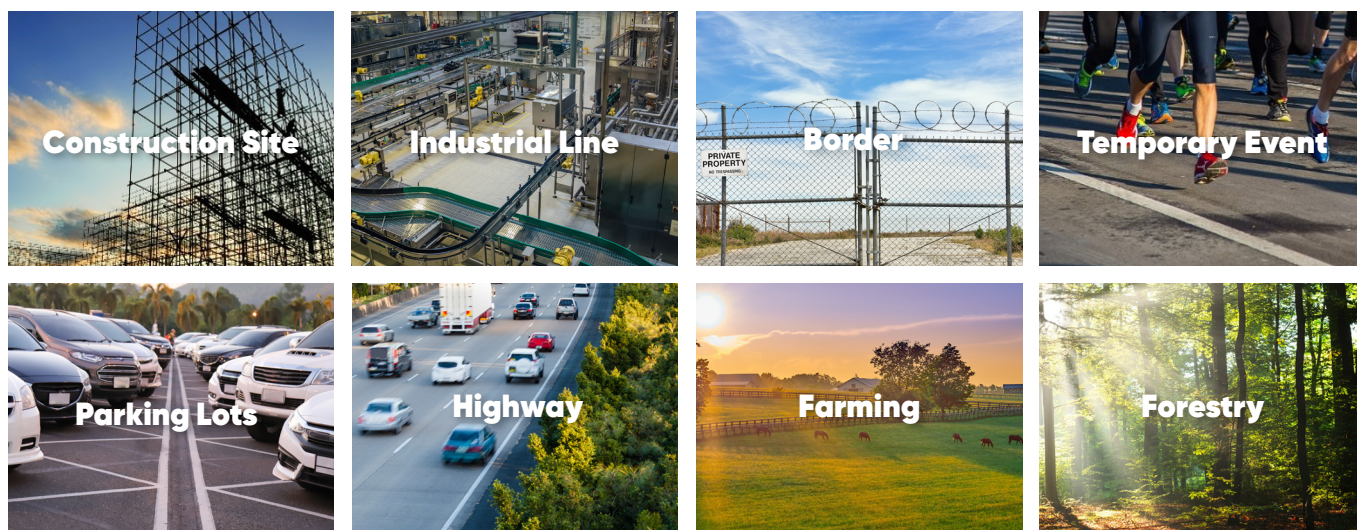
2MP Standard Solar-Powered Camera

Cost-effective solar-powered camera solution

- **Power**
40W Solar Panel, 30AH battery, up to 10 days battery life in cloudy
- **Data Transmission**
Built-in 4G module, supports all Australia/New Zealand mobile networks
- **Camera**
2MP HD, 120dB WDR



Application Scenarios



Product Comparison

		4K ColorVu Solar-Powered Camera	Thermal Solar-Powered Camera	2MP Standard Solar-Powered Camera
Feature	Model	DS-2XS6A87G1-L/C32S80	DS-2TXS2628-3P/QA/GLT/CH30S80 DS-2TXS2628-7P/QA/GLT/CH30S80 DS-2TXS2628-10P/QA/GLT/CH30S80	DS-2XS6A25G0-I-CH20S40
	Camera	8 MP ColorVu	256x192 Thermal+4MP	2 MP
	Lens	2.8/4	3/7/10	2.8/4/8
	Acusense	Support	Thermal Lens Support	N/A
	Supplement light	White Light 30m	IR 30m	IR 30m
	Visual Alarm	N/A	White Flashing Light +Audio	N/A
	Alarm output	N/A	2 in/out	N/A
	Battery	30AH	30AH	30AH
	The Average Power Consumption	2 W (4G transmission is excluded) The max. power consumption: 3.2 W	2.97 W Thermal only mode power consumption: 2.73 W The max. power consumption: 7.1 W (IR light on)	1.76 W
Solar	Solar Panel	80W	80W	40W
Battery life	Performance mode	Up to 4.5 days	Up to 3.5 days	Up to 10 days
4G	Frequency	LTE-TDD: Band38/40/41 LTE-FDD: Band1/3/5/7/8/20/28		
Platform		HikConnect, HikCentral, NVR, Milestone		