



HIKVISION®

Smart Retail Solution

Retail Chain · Shopping Centre · Supermarket · Petrol Station

Hikvision's Smart Retail Solution digs into retailers' essential needs, and empowers them with unparalleled capabilities to connect, protect, and perceive for smart, fluid security management and business operations. Hikvision's retail solution caters to businesses that may vary in size but share the need for smarter operations, better security, and more insightful business.

Car Park Management



- Capture number plates on entry and exit to the shopping centre.
- Manage multiple vehicle lists for monitoring staff, VIPs, deliveries, and contractors.
- Efficiently search for vehicles using number plate details, partial plate or vehicle type through our intelligent search feature.
- Automate staff time attendance using biometric authentication.
- Analyse peak hours of vehicle traffic on a daily, weekly, monthly, and annual basis to better understand patterns and trends.

Store Entry

Intelligent Metrics Camera

- Gain insights into customer behaviour with metrics, such as demographics.
- Use intelligent search with attribute filters to efficiently find when specific individual entered.
- Receive real-time notifications for Persons of Interest (shoplifters/trouble makers).

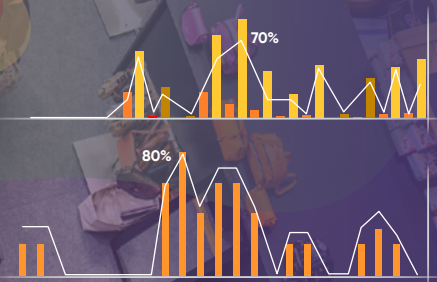
Digital Display

- Centrally manage dynamic marketing materials, specials, events, restaurant/cafe menus.
- Schedule contents to suit your customer demographic.
- No subscriptions and no more paper waste.



In-Store Analytics and Report

- Customer walk-in rate report: Provides insights into foot traffic patterns, empowering businesses to make data-driven decisions that lead to improved operations and customer experiences.
- Store promotion report: Shows customer traffic during the promotional days, clearly indicating the promotional period on the charts, to provide a quick and visual representation of the promotion's effectiveness.
- Heat Mapping: Generates an overview of your store to understand people's movements.
- Area Popularity Analysis: Provides real-time statistics on customer counts and dwell time in a specific area, allowing you to measure the effectiveness of your promotions.
- Video-based Flow Direction Analysis: Offers a quick overview of the directions customers take once they enter your store.

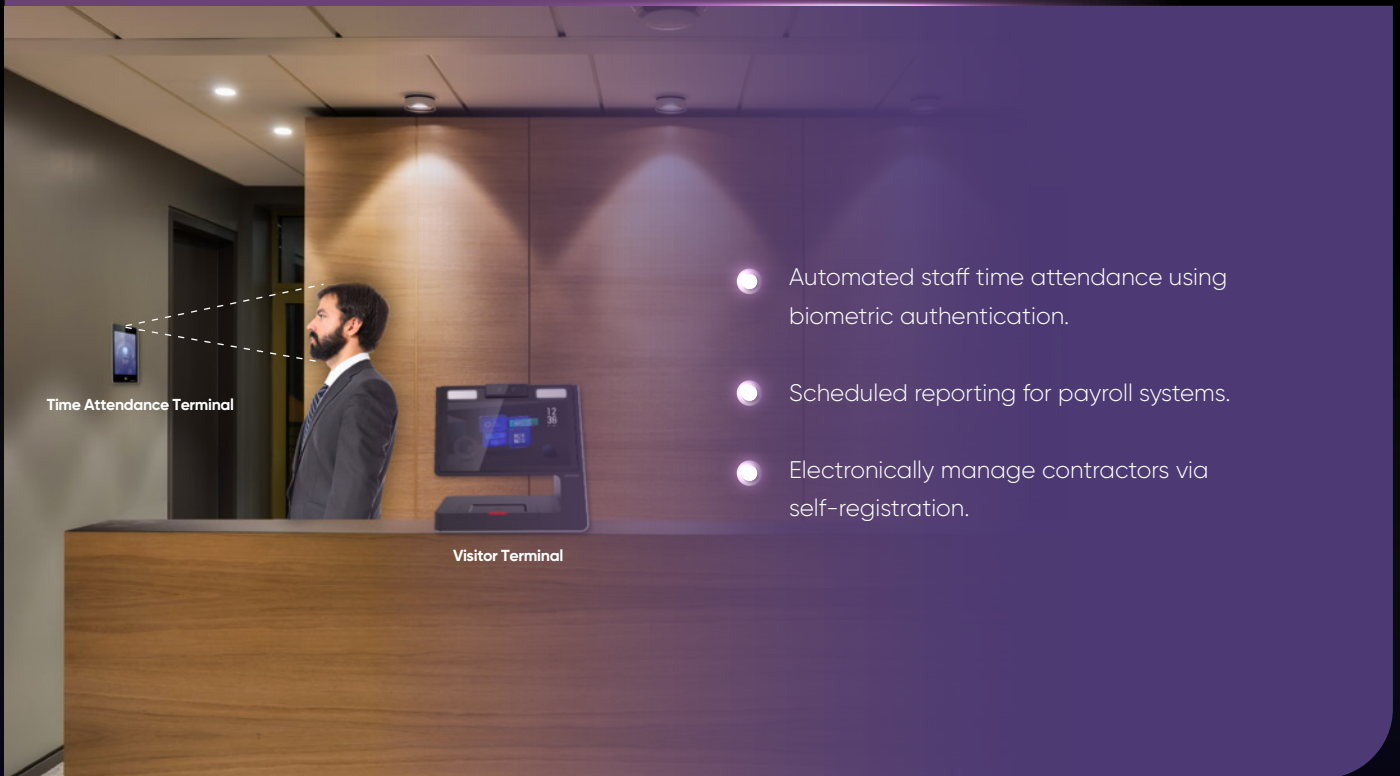


Cash Register



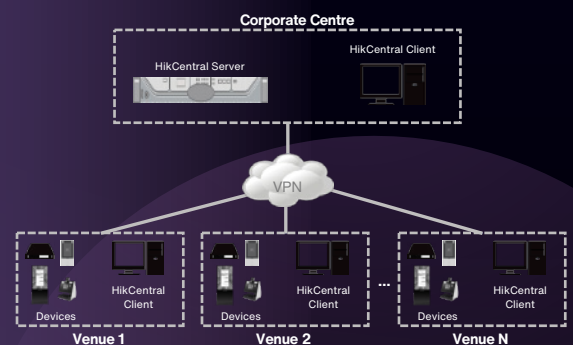
- Optimise transaction analysis by overlaying transaction details from the POS machine.
- Search video based on specific keywords, such as "no sale", "refund", or "cash out".
- Businesses gain insights into customer and staff behaviour and detect fraudulent activities in real time or playback.
- Enhance customer service by utilising a real-time Queue Analysis application with cameras that monitors in-store queues and sends notifications to store managers when wait times become excessive, helping businesses proactively manage staffing levels.

Staff and Contractor Management

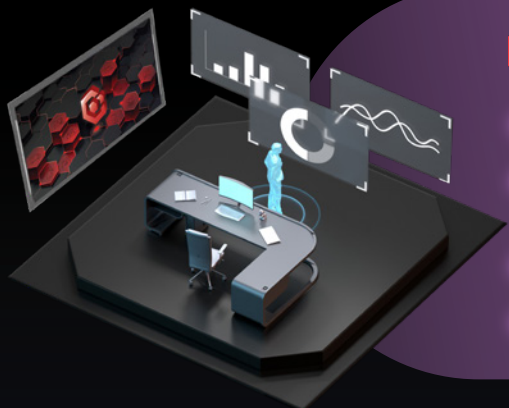


Control Room

- Centralised management for CCTV, Time Attendance, Access Control, and Digital Signage.
- Review live or playback footage across single or multiple sites.
- Health monitoring with proactive and visual system diagnostics.
- Intuitive user interface featuring video walls, meaningful reports, and customisable dashboards.
- Receive real-time notifications for VIPs and Persons of Interest (shoplifters, trouble makers).



Product Showcase



HikCentral Professional

- Easy to deploy and use.
- A unified security system that enhances management operations.
- Personalise your own security system.
- Visualised systems, data, and maintenance.

Car Park Management



ANPR Camera

- 4MP, DarkFighter
- License plate recognition
- Vehicle attribute



Video Intercom

- 2MP
- Single button
- Built-in card reader



Hybrid Light ColorVu Camera

- 24/7 colour imaging
- Three supplemental lighting modes available
- Human & vehicle classification



Fisheye Camera

- 6MP or 12MP
- De-warping and heatmap
- Built-in MIC

Main Area



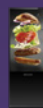
Intelligent Metrics Camera

- 4MP, DarkFighter
- Facial recognition
- Human attribute



People Counting Camera

- Dual-lens 2MP
- People counting
- 3D modelling



Digital Signage

- 1080p, Android OS
- 43" or 55" LCD screen
- Floor-standing
- Ethernet and WIFI



Signage Box

- 1080p, Android OS
- 1 HDMI output
- Ethernet and WIFI

Staff & Contractor Management



Time Attendance Terminal

- 7" LCD touch screen
- Facial recognition
- Built-in card reader



Visitor Terminal

- 10.1" LCD touch screen
- Built-in card reader
- WIFI supported



DeepinMind NVR

- 16-ch or 32-ch
- Up to 16-ch facial recognition



HikCentral Pro VMS

- Management
- Operation & report
- Health monitoring



Sydney office: 46 Brookhollow Ave,
Baulkham Hills, NSW 2153
Email: salesau@hikvision.com
Hotline: +61 1300 976 305
www.hikvision.com/au-en/



Hikvision Australia and New Zealand



Learn more
about our solutions



Book a consultant