

# TandemVu Series PTZ Cameras with Smart Features

*Big Picture and Details in One View*



**Bullet**



DS-2SE3C404MWG-E/14



DS-2SE7C432MWG-EB/26(F0)



DS-2SF8C442MXG1-ELWY/26(F0)



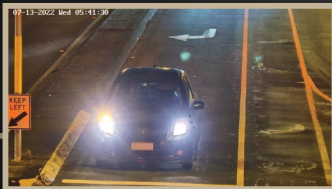
DS-2SE4C425MWG-E/26(F0)



DS-2SE4C425MWG-E(14F0)

The TandemVu PTZ camera represents the cutting-edge in Hikvision's latest camera design, allowing users to capture panoramic overviews and detailed close-up shots simultaneously.

They provide a fixed overview regardless of PTZ camera movements, such as panning, tilting, or zooming, ensuring users have a comprehensive and uninterrupted view from the moment of deployment.



**PTZ**

## Introducing the *Smart Features* of the TandemVu PTZ cameras:

These cameras go beyond merely combining the two cameras into one body; they intelligently link the two cameras.

The SE4, SE7, and SF8 TandemVu PTZ cameras offer exceptional smart linkage tracking capabilities. When a target is detected through the panoramic lens, the PTZ swiftly initiates linkage tracking to ensure that no subject escapes observation. Additionally, the SE7 Series can perform takeover tracking even when the target leaves the field of view of the panoramic camera.

The SF8 Series introduces advanced AI features that capture a wider array of data, including number plates, vehicle types, colours, face recognition, and body-related attributes. This adaptability makes it invaluable for a broad range of advanced applications.

## Hikvision Australia & New Zealand

Sydney office: 46 Brookhollow Ave, Baulkham Hills, NSW 2153

Email: [salesau@hikvision.com](mailto:salesau@hikvision.com)

Hotline: +61 1300 976 305



@ Hikvision Australia and New Zealand



Scan to  
learn more

## TandemVu SE3 PTZ Camera



DS-2SE3C404MWG-E/14

- **Compact Size**

Only 1.4kg, all-in-one bracket suitable for ceiling mount or wall mount.

- **Smart Linkage Tracking**

Focus on human target and track when the bullet camera detects a target.

- **Built-in Microphone and Speaker**

Support two way audio, or audible warning linkage with Smart VCA events.

## TandemVu SE4 PTZ Camera

### ColorVu Panoramic View



ColorVu  
Technology

### Detailed PTZ View



DS-2SE4C425MWG-E/26(F0)



### Panoramic + Details

6MP 180° panoramic lens &  
4MP 25X Optical PTZ lens



### ColorVu Technology

24/7 Colourful imaging  
in bullet channel



### Smart Linkage Tracking

The PTZ camera will  
automatically track  
when the bullet camera  
detects a target



### AcuSense Technology

Human and vehicle  
classification



### Easy Installation

Weigh up only 2.4kg, and  
powered by POE+, or 12V  
DC compatible for  
solar-powered solution



### 3D Positioning

Click or draw a box in  
overview channel, and PTZ  
will zoom in accordingly

## TandemVu SE7 PTZ Camera



DS-2SE7C432MWG-EB/26(F0)

- **PTZ Smart Linkage Tracking**

When a smart VCA event is triggered in the bullet channel, the PTZ camera will automatically track the target, until the target leaves the field of view of the bullet channel.

- **Takeover Tracking**

During the linkage tracking, if the target leaves the field of view of the bullet channel, the PTZ will still keep tracking the target.

- **Live Guard**

Active Deterrence with strobe light and audible warning.

## TandemVu SE8 PTZ Camera



DS-2SF8C442MXG1-ELWY/26(F0)

Colourful global panoramic **ColorVu** Technology



**Bullet**

① Intrusion Detection in Panoramic Channel

**Smart Linkage**



**PTZ**

② Smart linkage with PTZ Channel

Detailed PTZ view **DarkFighter 2.0**

Less Blind Spot

Smart-Linkage Tracking

Corrosion Resistant Coating

Switchable AI modes

With dual AI chips, integrating multiple algorithms into one device is possible. This design allows one camera to serve multiple purposes in complex scenarios.

**Auto Tracking 2.0**



Perimeter Protection

OR



Human Target Detection

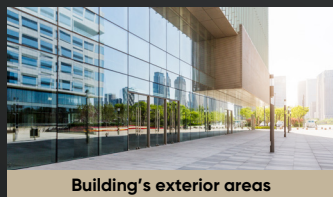
OR



Vehicle & Traffic Detection



## Application Scenarios



Building's exterior areas



Shopping centres



Warehouses



Factories



Car parks



Temporary sites



Ports and harbours

## Product Comparison

Module	DS-2SE3C404MWG-E/14	DS-2SE4C425MWG-E(14F0)	DS-2SE4C425MWG-E/26(F0)	DS-2SE7C432MWG-EB/26(F0)	DS-2SF8C442MXG-EL(W)/26(F0)(AUS)
Bullet Camera	2.8mm 4MP	2.8mm 4MP ColorVu	2.8mm 6MP Pano ColorVu	2.8mm 6MP Pano ColorVu	2.8mm 6MP Pano ColorVu with 1/1.8" sensors
PTZ Camera	4MP 2.8-12mm	4MP Acusense4.8 to 120 mm, 25x optical	4MP Acusense4.8 to 120 mm, 25x optical	4MP Acusense5.9 to 188.8 mm, 32x optical	4MP Acusense 6 to 252 mm, 42xoptical
Min. Illumination	<b>Bullet channel: Colour:</b> 0.01 Lux @ (F1.6, AGC ON), B/W: 0.005 Lux @ (F1.6, AGC ON), 0 Lux with IR <b>PTZ channel: Color:</b> 0.01 Lux @ (F1.5, AGC ON), B/W: 0.005Lux @ (F1.5, AGC ON), 0 Lux with IR	<b>Bullet channel:</b> 0.0005 Lux @ (F1.0, AGC ON), 0 Lux with light; <b>PTZ channel: Color:</b> 0.005 Lux @ (F1.6, AGC ON), B/W: 0.001 Lux @ (F1.6, AGC ON), 0 Lux with IR	<b>Bullet channel:</b> 0.0005 Lux @ (F1.0, AGC ON), 0 Lux with light; <b>PTZ channel: Color:</b> 0.005 Lux @ (F1.6, AGC ON), B/W: 0.001 Lux @ (F1.6, AGC ON), 0 Lux with IR	<b>Bullet channel:</b> 0.0005 Lux @ (F1.0, AGC ON), 0 Lux with light; <b>PTZ channel: Color:</b> 0.005 Lux @ (F1.5, AGC ON), B/W: 0.001 Lux @ (F1.5, AGC ON), 0 Lux with IR	<b>Bullet channel: Color:</b> 0.0005 Lux @ (F1.0, AGC ON), B/W: 0.0001 Lux @ (F1.0, AGC ON), 0 Lux with Light <b>PTZ channel: Color:</b> 0.0005 Lux @ (F1.2, AGC ON), B/W: 0.0001 Lux @ (F1.2, AGC ON), 0 Lux with IR
Adjustable Tiltingangle of bulletchannel	<b>Manual, 0-17deg</b>	N/A	N/A	N/A	<b>Motorised, 12-24 degree</b>
Supplement light	[PTZ channel]: IR Distance: up to 40 m; [Bullet channel]: IR Distance: up to 30 m; Hybrid Light Distance: 30 m	IR up to 100m White Light up to 30m	IR up to 100m White Light up to 30m	IR up to 200m White Light up to 30m	IR up to 300m White Light up to 30m
Active Deterrence	Audible Alarm Linkage	N/A	N/A	<b>Flashing light and audible warning</b>	<b>Flashing light and audible warning</b>
Pan Speed	Configurable from 0.1° to 30°/s; preset speed: 30°/s	Rotate speed:0.1°to 80°/s Preset speed: 80°/s	Rotate speed:0.1°to 80°/s Preset speed: 80°/s	Rotate speed:0.1°to 160°/s Preset speed: 240°/s	Rotate speed:0.1°to 160°/s Preset speed: 240°/s
Tilt Speed	Configurable from 0.1° to 30°/s, preset speed 30°/s	Tilt speed: 0.1° to 80°/s preset speed: 80°/s	Tilt speed: 0.1° to 80°/s preset speed: 80°/s	Tilt speed: 0.1° to 120°/s preset speed: 200°/s	Tilt speed: 0.1° to 120°/s preset speed: 200°/s
Corrosion-resistant coating	N/A	N/A	N/A	N/A	<b>YES</b>
Bullet - PTZ 3D Positioning	Supported	Supported	Supported	Supported	Supported
Bullet - PTZ Smart Linkage Tracking <sup>①</sup>	Supported	Supported	Supported	Supported	Supported
Tracking Takeover <sup>②</sup>	Not Supported	Not Supported	Not Supported	Supported	Supported
Smart Event - Bullet Channel	Intrusion, Line Crossing, region entrance/exit detection	Intrusion, Line Crossing, region entrance/exit detection,face capture	Intrusion, Line Crossing, region entrance/exit detection,face capture	Intrusion, Line Crossing, region entrance/exit detection	Intrusion, Line Crossing, region entrance/exit detection
Smart Event - PTZ Channel	Intrusion, Line Crossing, region entrance/exit detection	Intrusion, Line Crossing, region entrance/exit detection	Intrusion, Line Crossing, region entrance/exit detection	Intrusion, Line Crossing, region entrance/exit detection	Multi-target detection, face recognition, ANPR,Intrusion, line crossing, regiona entrance/exit
Power	12VDC, POE+	12VDC, POE+, Max.24W	12VDC, POE+, Max.24W	12VAC, Hi-PoE,Max. 60W	36VDC± 25%, Hi-PoE,Maz. 60W
Dimensions	311.5 mm × 223.5 mm × 156 mm (12.26" × 8.80" × 6.14")	Ø166 mm x375 mm (Ø 6.5"x 14.7")	Ø166 mm x375 mm (Ø 6.5"x 14.7")	Ø222.3 mm × 387.2 mm (Ø8.75" × 15.2")	Ø290 mm × 453.2 mm (Ø11.42" × 17.84")
Weight	Approx. 1.37 kg (3.02 lb.)	<b>Approx. 2.4 kg</b>	<b>Approx. 2.4 kg</b>	Approx. 6 kg	Approx. 10.5 kg

### Term Explanation:

- ① Bullet - PTZ Smart Linkage Tracking:** When a smart VCA event is triggered in the bullet channel, the PTZ camera will automatically track the target, until the target leaves the field of the view of bullet channel.
- ② Tracking Takeover:** During the linkage tracking, if the target leaves the field of view of the bullet channel, the PTZ will still keep tracking the target.