

TandemVu Series PTZ Cameras with Smart Features

Big Picture and Details in One View



Bullet



DS-2SE3C404MWG-E/14



DS-2SE7C432MWG-EB/26(F0)



DS-2SF8C442MXG1-ELWY/26(F0)



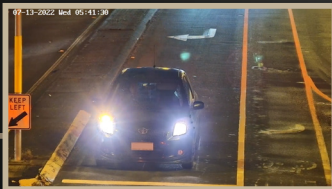
DS-2SE4C425MWG-E/26(F0)



DS-2ST5C432MWG-EW/26(PA)

The TandemVu PTZ camera represents the cutting-edge in Hikvision's latest camera design, allowing users to capture panoramic overviews and detailed close-up shots simultaneously.

They provide a fixed overview regardless of PTZ camera movements, such as panning, tilting, or zooming, ensuring users have a comprehensive and uninterrupted view from the moment of deployment.



PTZ

Introducing the **Smart Features** of the TandemVu PTZ cameras:

These cameras go beyond merely combining the two cameras into one body; they intelligently link the two cameras.

The SE4, SE7, and SF8 TandemVu PTZ cameras offer exceptional smart linkage tracking capabilities. When a target is detected through the panoramic lens, the PTZ swiftly initiates linkage tracking to ensure that no subject escapes observation. Additionally, the SE7 Series can perform takeover tracking even when the target leaves the field of view of the panoramic camera.

The SF8 Series introduces advanced AI features that capture a wider array of data, including number plates, vehicle types, colours, face recognition, and body-related attributes. This adaptability makes it invaluable for a broad range of advanced applications.

Hikvision Australia & New Zealand

Sydney office: 46 Brookhollow Ave, Baulkham Hills, NSW 2153

Email: salesau@hikvision.com

Hotline: +61 1300 976 305



@ Hikvision Australia and New Zealand



Scan to
learn more

TandemVu SE4 PTZ Camera

ColorVu Panoramic View

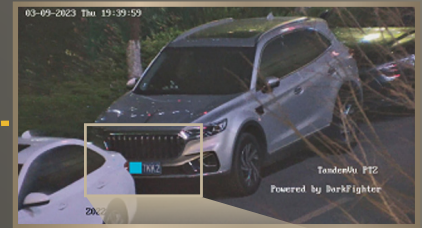


ColorVu
Technology



DS-2SE4C425MWG-E/26(F0)

Detailed PTZ View



Panoramic + Details

6MP 180° panoramic lens & 4MP 25X Optical PTZ lens



ColorVu Technology

24/7 Colourful imaging in bullet channel



Smart Linkage Tracking

The PTZ camera will automatically track when the bullet camera detects a target



AcuSense Technology

Human and vehicle classification



Easy Installation

Weigh up only 2.4kg, and powered by POE+, or 12V DC compatible for solar-powered solution



3D Positioning

Click or draw a box in overview channel, and PTZ will zoom in accordingly

TandemVu ST5 PTZ Camera



DS-2ST5C432MWG-EW/26(PA)

• Anti-corrosion:

Both the PTZ and brackets are C5-M and NEMA 4X certified, ensuring excellent corrosion resistance and high material strength.

• Panoramic Lens

Provides a 180° wide-angle view, with motorized tilt adjustment from 12° to 24°.

• LiveGuard

Active deterrence with strobe light and audible warning for proactive intrusion response.

TandemVu SE7 PTZ Camera



DS-2SE7C432MWG-EB/26(F0)

- **PTZ Smart Linkage Tracking**

When a smart VCA event is triggered in the bullet channel, the PTZ camera will automatically track the target, until the target leaves the field of view of the bullet channel.

- **Takeover Tracking**

During the linkage tracking, if the target leaves the field of view of the bullet channel, the PTZ will still keep tracking the target.

- **Live Guard**

Active Deterrence with strobe light and audible warning.

TandemVu SE8 PTZ Camera



DS-2SF8C442MXG1-ELWY/26(F0)

Colourful global panoramic

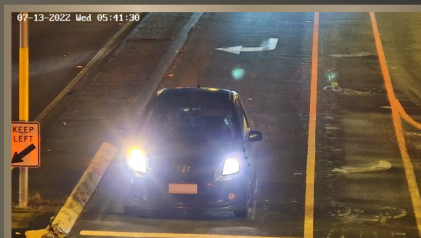
ColorVu
Technology



Bullet

① Intrusion Detection
in Panoramic Channel

Smart Linkage



PTZ

② Smart linkage with
PTZ Channel

Detailed PTZ view

DarkFighter 2.0

Less Blind Spot

Smart-Linkage
Tracking

Corrosion Resistant
Coating

Switchable AI modes

With dual AI chips, integrating multiple algorithms into one device is possible. This design allows one camera to serve multiple purposes in complex scenarios.

Auto Tracking 2.0

Auto Tracking 3.0



Perimeter
Protection

OR



Human Target
Detection

OR



Vehicle & Traffic
Detection

Application Scenarios



Building's exterior areas



Shopping centres



Warehouses



Factories



Car parks



Temporary sites



Ports and harbours

Product Comparison

Module	DS-2SE3C404MWG-E/14	DS-2SE4C425MWG-E/26(F0)	DS-2ST5C432MWG-EW/26(PA)	DS-2SF8C442MXG-EL(W)/26(F0)(AUS)
Bullet Camera	2.8mm 4MP	2.8mm 6MP Pano ColorVu	2.8mm 6MP Pano ColorVu	2.8mm 6MP Pano ColorVu with 1/1.8" sensors
PTZ Camera	4MP 2.8-12mm	4MP Acusense4.8 to 120 mm, 25x optical	4MP Acusense5.9 to 188.8 mm, 32x optical	4MP Acusense 6 to 252 mm, 42xoptical
Min. Illumination	Bullet channel: Colour: 0.01 Lux @ (F1.6, AGC ON), B/W: 0.005 Lux @ (F1.6, AGC ON), 0 Lux with IR PTZ channel: Color: 0.01 Lux @ (F1.5, AGC ON), B/W: 0.005Lux @ (F1.5, AGC ON), 0 Lux with IR	Bullet channel: 0.0005 Lux @ (F1.0, AGC ON), 0 Lux with light; PTZ channel: Color: 0.005 Lux @ (F1.6, AGC ON), B/W: 0.001 Lux @ (F1.6, AGC ON), 0 Lux with IR	Bullet channel: 0.0005 Lux @ (F1.0, AGC ON), 0 Lux with light; PTZ channel: Color: 0.005 Lux @ (F1.5, AGC ON), B/W: 0.001 Lux @ (F1.5, AGC ON), 0 Lux with IR	Bullet channel: Color: 0.0005 Lux @ (F1.0, AGC ON), B/W: 0.0001 Lux @ (F1.0, AGC ON), 0 Lux with Light PTZ channel: Color: 0.0005 Lux @ (F1.2, AGC ON), B/W: 0.0001 Lux @ (F1.2, AGC ON), 0 lux with IR
Adjustable Tiltingangle of bulletchannel	Manual, 0-17deg	N/A	Motorised, 12-24 degree	Motorised, 12-24 degree
Supplement light	[PTZ channel]: IR Distance: up to 40 m; [Bullet channel]: IR Distance: up to 30 m; Hybrid Light Distance: 30 m	IR up to 100m White Light up to 30m	IR up to 200m White Light up to 30m	IR up to 300m White Light up to 30m
Active Deterrence	Audible Alarm Linkage	N/A	Flashing light and audible warning	Flashing light and audible warning
Pan Speed	Configurable from 0.1° to 30°/s; preset speed: 30°/s	Rotate speed:0.1°to 80°/s Preset speed: 80°/s	Rotate speed:0.1°to 80°/s Preset speed: 80°/s	Rotate speed:0.1°to 160°/s Preset speed: 240°/s
Tilt Speed	Configurable from 0.1° to 30°/s; preset speed 30°/s	Tilt speed: 0.1° to 80°/s preset speed: 80°/s	Tilt 0.1° to 80°/s Preset speed: 80°/s	Tilt speed: 0.1° to 120°/s preset speed: 200°/s
Corrosion-resistant coating	N/A	N/A	NEMA 4X and C5-M	NEMA 4X
Bullet - PTZ 3D Positioning	Supported	Supported	Supported	Supported
Bullet - PTZ Smart ^① Linkage Tracking	Supported	Supported	Supported	Supported
Tracking Takeover ^②	Not Supported	Not Supported	Supported	Supported
Smart Event - Bullet Channel	Intrusion, Line Crossing, region entrance/exit detection	Intrusion, Line Crossing, region entrance/exit detection,face capture	Intrusion, Line Crossing, region entrance/exit detection	Intrusion, Line Crossing, region entrance/exit detection
Smart Event - PTZ Channel	Intrusion, Line Crossing, region entrance/exit detection	Intrusion, Line Crossing, region entrance/exit detection	Multi-target detection, face recognition, ANPR, intrusion, line crossing, regiona entrance/exit	Multi-target detection, face recognition, ANPR,intrusion, line crossing, regiona entrance/exit
Power	12VDC, POE+	12VDC, POE+, Max:24W	12VDC, Hi-POE, Max 90W	36VDC± 25%, Hi-PoE,Maz. 60W
Dimensions	311.5 mm × 223.5 mm × 156 mm (12.26" × 8.80" × 6.14")	Ø166 mm x375 mm (Ø 6.5"x 14.7")	Ø218 mm × 389 mm (Ø8.58" × 15.31")	Ø290 mm × 453.2 mm (Ø11.42" × 17.84")
Weight	Approx. 1.37 kg (3.02 lb.)	Approx. 2.4 kg	Approx. 5.4 kg	Approx. 10.5 kg

Term Explanation:

- Bullet - PTZ Smart Linkage Tracking:** When a smart VCA event is triggered in the bullet channel, the PTZ camera will automatically track the target, until the target leaves the field of the view of bullet channel.
- Tracking Takeover:** During the linkage tracking, if the target leaves the field of view of the bullet channel, the PTZ will still keep tracking the target.