

HIKVISION®

Industry Dashcam **G40 PRO**



**Comprehensive Protection for Your Journey
Drive with Confidence**

Background

Challenges and Pains of Driving Safety and Efficiency



Disputed Accident Liability

30% of logistics disputes result in delayed payouts due to insufficient evidence.

More angles and coverage of the video picture is an urgent need in the market.



Driver Driving Safety

Fatigue/distracted driving causes 25% of freight accidents.

Alerting and monitoring drivers' driving behavior is a basic need in the industry.



Fleet Management

Vague and unverifiable driver/vehicle data compromise operational control over transportation processes.



Cost Overruns

Fuel stolen and abnormal use increases the operation cost of the company, and the real-time understanding of the use status is a pressing issue for the company to solve.

Key Values



Integrated Dual-Lens Design

Combines **5MP** front and **2MP** interior cameras without extra installation

5

5-Channel Video Input

Include default 2 channels and 3 additional channels (Up to 2MP)



Professional AI

Supports **DSM** and **ADAS** intelligent functions, providing timely alerts to ensure safe driving
Support Driver ID Recognition



AE-DI5052-G40 PRO

Dual MicroSD Card and SIM Card

Total **2TB** storage and **2 SIM** cards automatic signal switching for interstate transportation.



Sentry Mode

Activates after ignition off, enabling low-power dual-channel monitoring (front and interior).

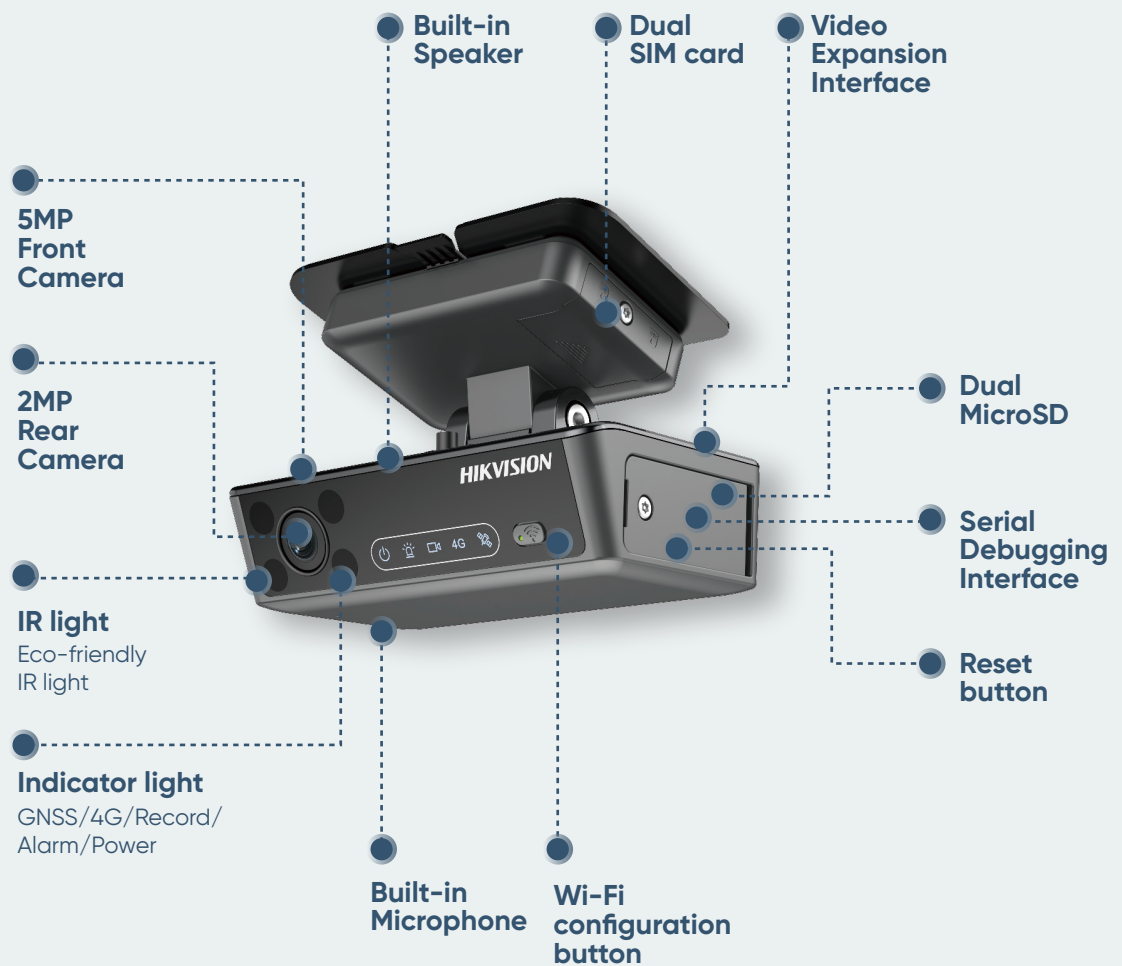


Platform Compatibility

Supports integration with platforms **HCT/HCP/3rd Party integration** for device management and video playback.



Dimension & Appearances



Dual MicroSD & SIM Card Design

Always Stored, Always Connected

Massive Storage Capacity

- 1TB MicroSD per one slot of 2TB in total: Each MicroSD slot supports up to 1TB, enabling more footage of continuous recording.
- Dual Backup Redundancy: Simultaneous recording to both cards prevents data loss during card failures.
- Smart Overwrite: Auto-deletes oldest files when full, ensuring uninterrupted recording.

Dual SIM Card Innovation

- Auto-Switch Networks: Seamlessly transitions between carriers in cross-border transport.
- 4G Dual Standby: Maintains real-time GPS tracking and cloud uploads even if one network fails.





Sentry Mode

24/7 Protection, Zero Compromise

G40 PRO industrial dashcam features an intelligent Sentry Mode that activates automatically when the vehicle is powered off. Utilizing ultra-low-power optimization. It contentiously monitors the inside of vehicle through rear incabin camera.

- **In-vehicle Surveillance**

24/7 HD recording with motion detection.

- **Energy-Efficient Design**

Consumes only 3W in standby mode, extending battery life by 300% vs. conventional solutions.

- **Secure Evidence Lock**

Critical footage is auto-saved to encrypted local storage MicroSD backup.



Professional AI

ADAS – Advanced Driver Assistance Systems



FCW

Forward Collision Warning



LDW

Lane Departure Warning



FCL

Front Car Launch



SLW

Solid lane Warning



PCW

Pedestrian Collision Warning



HMW

Headway Monitoring Warning



TLD

Traffic Lights Detection



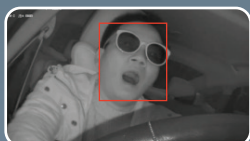
TSR

Traffic Sign Recognition

DSM – Driver Status Monitoring



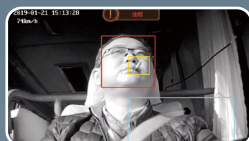
Fatigue



High Accuracy



Smoke



High Accuracy



Distraction



High Accuracy



Phone Call



High Accuracy



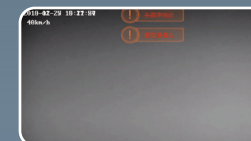
Driver Off Seat



High Accuracy



Blocked



High Accuracy

Multi-Channel Monitoring Expansion

G40 PRO industrial dashcam supports flexible integration with 3 additional analog cameras, enabling multi-angle situational awareness for complex operational scenarios.

- **CAN Bus Interface**

Access vehicle data (fuel levels, engine diagnostics, OBD-II codes).

- **I/O for Vehicle Signals**

Real-time integration of turn signals, reverse lights, and custom triggers.

- **Alarm Input**

Capture emergency alerts (e.g., panic buttons) and auto-upload to the platform.

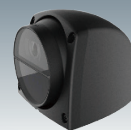
- **RS232 Port**

Connect peripherals (Door sensors, temperature sensors).



**G40 PRO
Front/interior**

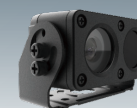
3-Channel Expandable Camera



Side Camera



Side Camera



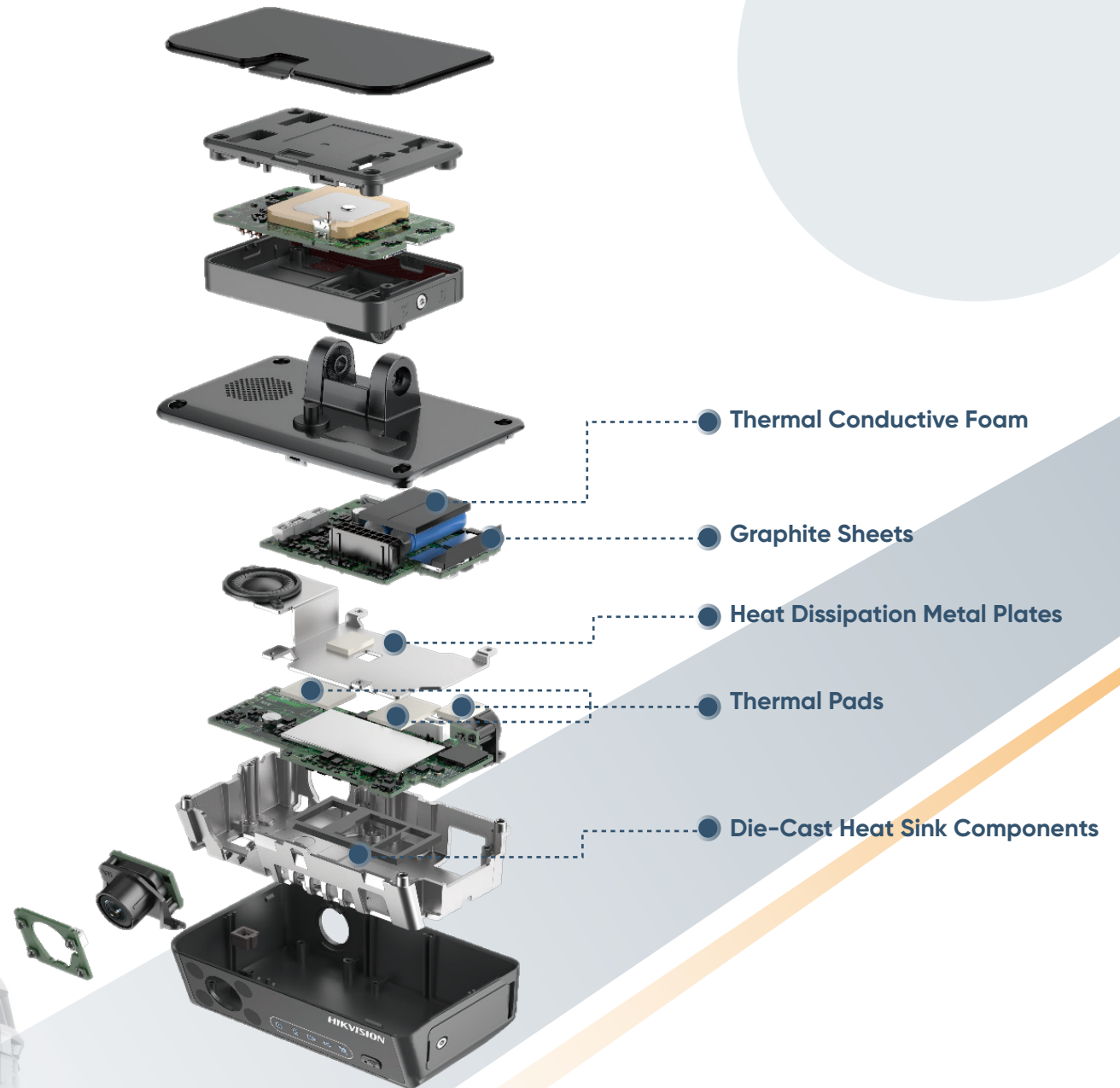
Rear Camera



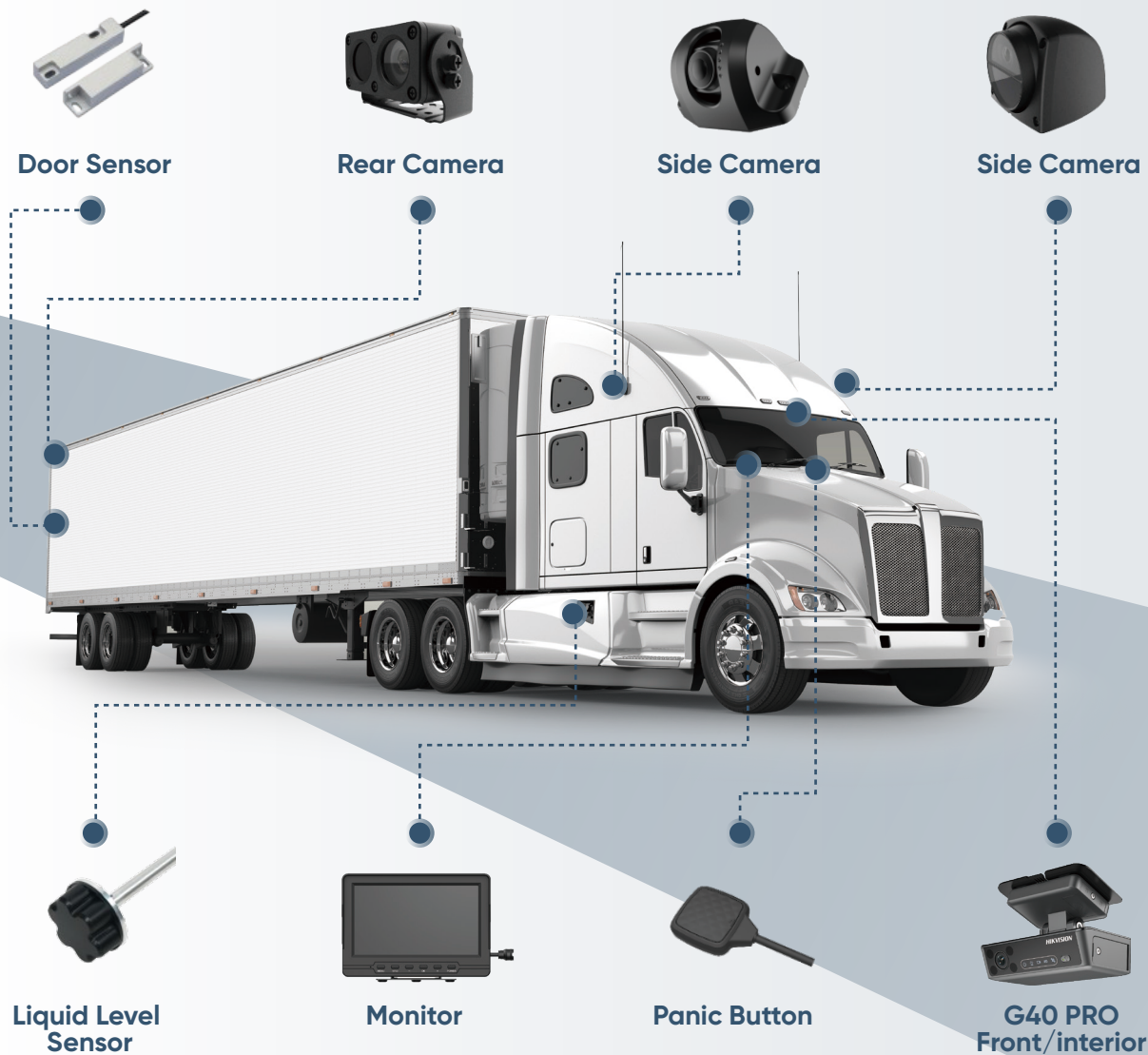
Thermal Management

G40 PRO industrial dashcam is engineered with an advanced thermal management system to ensure unparalleled reliability in extreme operating environments (-30°C to 70°C).

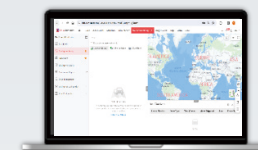
By integrating multiple cutting-edge heat dissipation technologies, including:



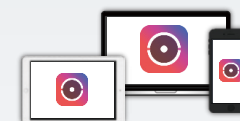
Complete Solutions



Platform



 **HikCentral Professional**



 **Hik-Connect Team**



 **3rd Party Integration**

Application Scenarios



Dimension & Appearances

Video & Audio

Camera Resolution	4G Dual SIM (Nano) Bluetooth 5.0 (third-party sensors) Wi-Fi (AP hotspot)
Video Compression	H.265/H.264
Field of View	Front camera: (H)123° (V) 63° (D)142° Rear camera: (H)145° (V) 78° (D)172°
Low-Light Performance	Min. Illumination: 0.1 Lux (color), 0.01 Lux (B&W IR)
Audio Features	Built-in microphone + speaker (two-way audio)

Storage & Communication

Storage Expansion	Dual Micro-SD slots (supports up to 1TB each, Class 10 or higher)
Wireless Connectivity	4G Dual SIM (Nano) Bluetooth 5.0 (third-party sensors) Wi-Fi (AP hotspot)

Positioning & Interfaces

Satellite Positioning	GPS/GLONASS/GALILEO tri-mode (speed/time overlay)
Motion Sensor	6-axis gyroscope (triggers emergency recording on collision/severe vibration)
Alarm Input	2-ch I/O alarm signals, 3-ch steering signals
Interfaces	1* CAN 1* RS232 serial port 1* 6 pin aviation Ethernet port

Hardware & Environment

Operating Temperature	-30°C ~ 70°C
Protection Rating	IP4X (dust-proof, non-waterproof)
Power Input	11.8V~16V/23.5V~36V, max. 15W
Dimensions & Weight	113mm×71mm×68mm (with bracket) net weight 321g