

HikCentral Professional  
Get flexible add-ons to suit your needs



[www.hikvision.com](http://www.hikvision.com)  
[support@hikvision.com](mailto:support@hikvision.com)



 **HikCentral Professional 2.6**

**HIKVISION**







# What is HikCentral Professional

HikCentral Professional – Hikvision’s security management software – helps professionals tackle various security obstacles on a single platform.

With HikCentral Professional, professionals can effortlessly manage different systems with ease, such as video security, access control, alarm detection, attendance and more. By using this software, you can optimize your day-to-day security operations in various scenarios.

Read on to discover why countless professionals rely on HikCentral Professional and join them in enhancing your security management capabilities.



## Content Overview

### Key Benefits

02

### Integration & Partnership

06

### Core Applications

07

01 Video

07

02 Access Control

09

### Advanced Applications

10

01 Smart Wall

11

02 Time & Attendance

11

03 Parking Lot

12

04 Visitor

13

05 Intrusion Detection

14

06 On-Board Monitoring

15

07 Intelligent Analysis

16

08 Portable Enforcement

17

09 Evidence Management

17

10 AR

18

11 Guard Patrol

18

12 Commercial Display

19

13 Security Inspection

19

14 Emergency Mustering

20

15 Remote Site Management (RSM)

21

### Innovative Industrial Applications

22

01 Parcel Tracking

22

02 Dock Management

23

03 Canteen Consumption

23

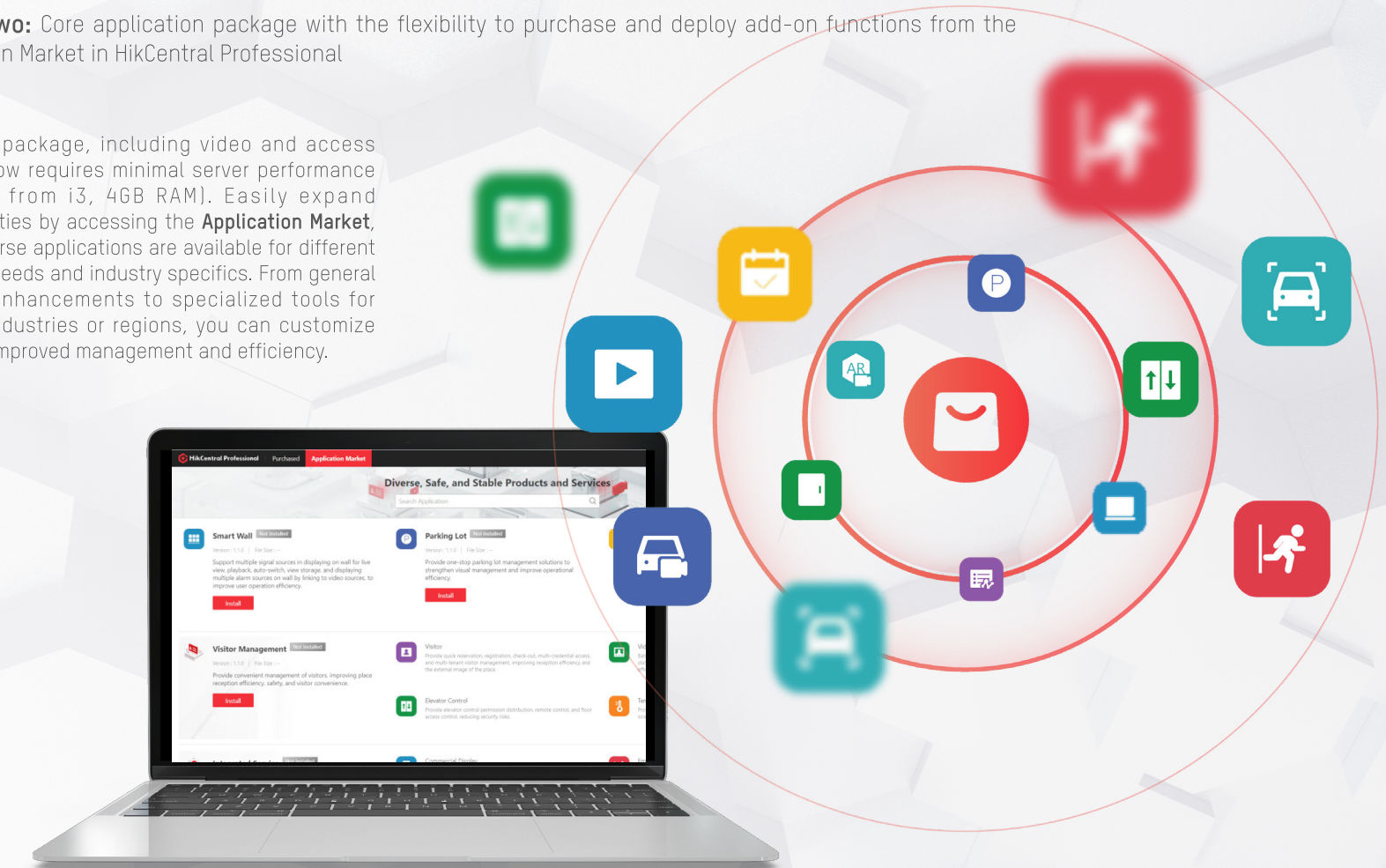
Trusted by customers in  
**200+**  
countries & regions

Connect to over  
**6,000,000+**  
security devices



HikCentral Professional offers ready-to-go solutions for specific scenarios like stores, logistics parks, bus stations, etc., improving their daily security and operation with data insights and unified management.

The base package, including video and access control, now requires minimal server performance (starting from i3, 4GB RAM). Easily expand functionalities by accessing the **Application Market**, where diverse applications are available for different business needs and industry specifics. From general security enhancements to specialized tools for specific industries or regions, you can customize setup for improved management and efficiency.





## Easy operations

User-friendly interface with visualized design and wizards.



## Simplified installation

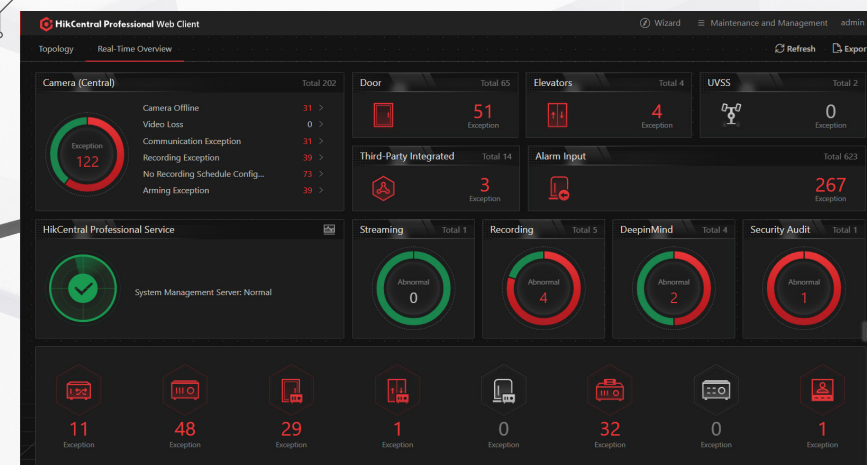
Minimum system requirements for HikCentral Professional is an i3 CPU and 4 GB of RAM.

## Easy maintenance

System health status is displayed visually in real time, contributing to faster notifications and locating of abnormal situations. What's more, all system historical records are conveniently trackable.

## Role-based permission control

Personalized content display based on your role makes you focus on the applications that matter most.



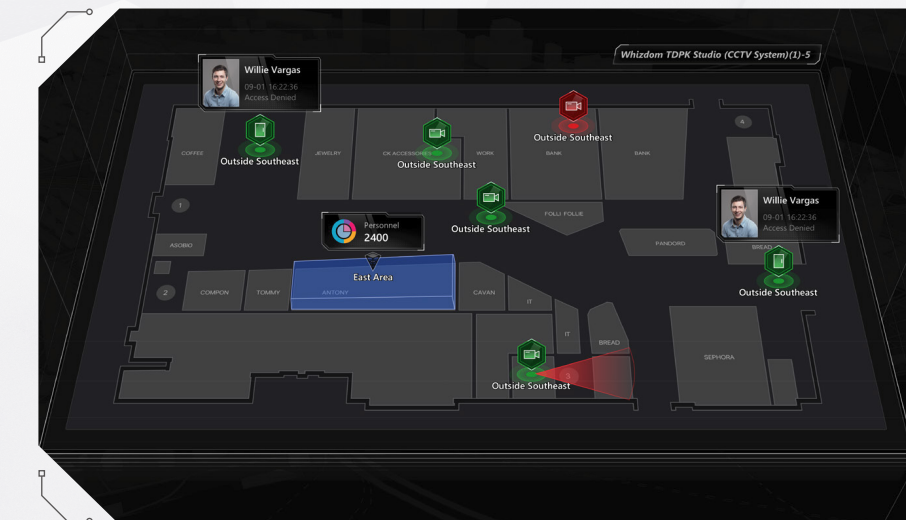
## Visualized systems for better insights

Alarm management, event tracking and AR live interaction in a visualized way make it easy to understand data from various applications. The dashboard supports creating a personalized display for the information you care about the most, contributing to smarter decision-making with more situational awareness.



## Interactive E-Maps

Interactive E-Maps give users an instant, dynamic view of multiple sites and the status of various devices all at the same time, as well as a shortcut to handle events and alarms directly onboard. It enables management and security staff to get accurate and timely notifications while responding to incidents promptly, enhancing day-to-day operational efficiency.





## Open system architecture allows easy and convenient integration



### Strong integration capabilities

The robust integration capabilities ensure powerful, innovative solutions, extending functionality beyond security to meet diverse demands and requirements.

HikCentral Professional can seamlessly integrate to various systems (e.g., WMS, AMS/CMS, BMS) and manage other devices (e.g., cameras, alarm panels, HVACs, NVRs) via standardized protocols like Onvif, BACnet, SIA and Modbus.

### OpenAPIs

### Comprehensive OpenAPIs

We offer a suite of professional APIs for your convenience, including a No Plugin Solution delivered through web portal. With our APIs, you can access technical documentation and code samples specifically structured to simplify your system building journey.

We continuously improve with industry developments by adding new APIs and standardized protocols. You can rely on us to provide you with the cutting-edge technologies.

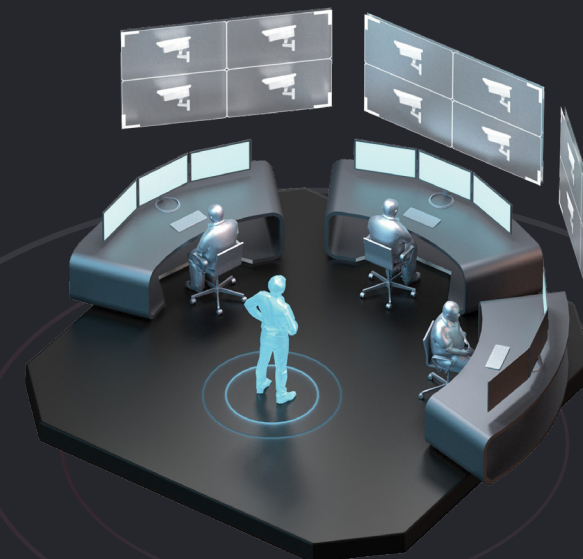
### Shared success with global partners

We collaborate with global technology partners to implement time-tested solutions. Our goal is to extend Hikvision's product benefits to you, so together we deliver reliable and expert solutions to meet our customers' needs.



## Core Applications

### 01 Video



### Efficient and comprehensive video security

Quickly save scenes and efficiently complete daily monitoring. Users can customize their own view to have a holographic perception of all videos, maps and data. Specified views can be opened in one minute for quick preview and playback.

### Quick and convenient search and playback

- Users will enjoy the quick incident search and location using thumbnails, supporting sub-stream, transcoded, and frame-extracting playback
- Convenient event search is based on tags and VCA search analysis, as well as key attributes of vehicles and persons
- A quick go-through of video based on event types reduces potential risks by locating high-frequency events in critical areas

### Low bandwidth network adaptability

Smooth streaming automatically adjusts bitrate and resolution between clients and NVRs or network cameras according to real-time network conditions.

### Flexible auto-patrolling

Users are able to set up scheduled capture plan based on actual scenarios or needs, and the captured pictures will be sent to users automatically.

### Versatile audio broadcasting

Integrating the video security expertise with smart audio capabilities, Hikvision network speaker offers an advanced audio & video linkage solution.

- Centrally control multiple audio devices and broadcast live or pre-recorded voice messages in real time to multiple zones
- Multiple broadcast modes such as scheduled, alarm linkage and emergency mustering, ensuring accurate and timely delivery of critical information



## 02 Access Control

### Video export as evidence

- Supports merging several clips into one downloadable video file, making management workflow simpler and easier
- File export is available in various formats including exe., avi., mp4, and more

### Reliable storage satisfies diversified needs



#### Flexible storage

HikCentral Professional offers event-triggered video recording and playback, along with automated video backup during idle periods. Channel-based video and image storage can be configured as well.



#### Multiple storage media

Video and images can be stored on various media storage platforms, such as NVRs / DVRs, pStor, Hybrid SAN, and Cluster Storage Servers.



#### High availability

HikCentral Professional features a fail-safe / high availability design with redundant remote & local backup and scheduled copy-back, along with pStor cluster services and NVR hot swapping.

### Comprehensive and flexible access management

Get flexible, customized, and comprehensive access control systems for employees and visitors with diverse credentials including face, iris, fingerprint, card, dynamic QR code, PIN code, mobile credentials including Bluetooth, 512 authentications, and 5 access strategies to choose from, for hundreds of scenarios.



### Easy and convenient personnel management

With HikCentral Professional, HRs and managers can easily assign various groups of people with different credentials with step-by-step guidance, manage employee on-board and demission procedures easily, and more.

To register, employees can use their smartphone to scan a QR code generated by HikCentral Professional and register their information remotely; they will receive access permission instantly.

What's more, with HikCentral Professional, it is easier than ever to enter employee information and design their badge with several unique styles and layouts to choose from. With a few clicks, managers can enter their information and print employee badges with all necessary access permissions.



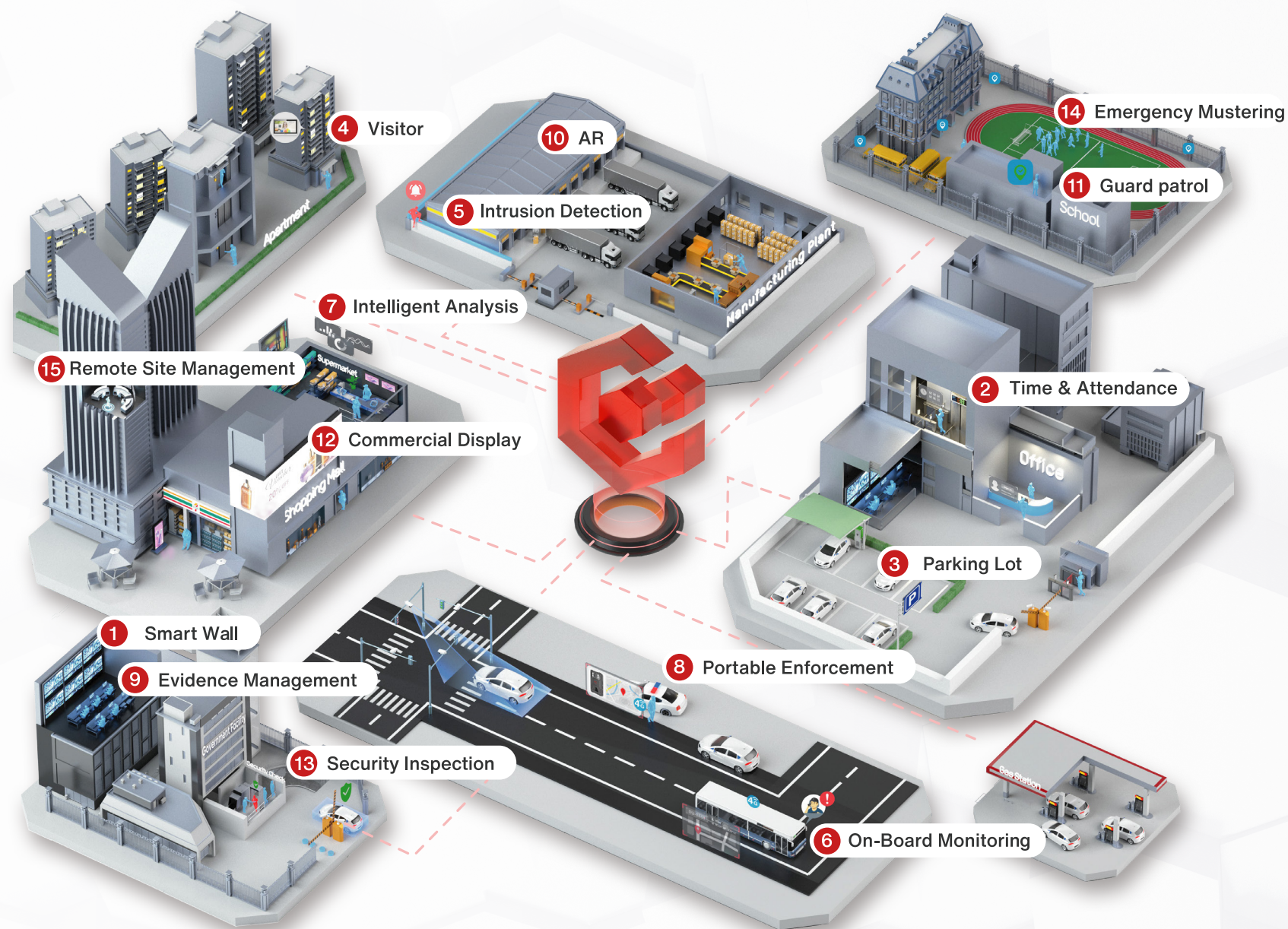
### Quick alarm handling

When incidents occur, the access control system will trigger network cameras to capture images and record videos. Security staff can check the video in real time and take multiple any necessary action.

The abnormal access points can be detected timely using e-maps, and the abnormalities are addressed efficiently through video verification.



## Advanced Applications



### 1 Smart Wall

#### Live data visualization

Operators gain valuable insights through real-time data visualization, which provides a comprehensive overview of key metrics and indicators.

#### Video carousels and scheduled playback

Operators check on overall situations as well as specific details without manually switching between multiple cameras, allowing for efficient and effective security and analysis.

#### Alarm notifications on the smart wall

When an alarm is triggered, it provides immediate notification to the operator through pop-up windows on the smart wall, and the corresponding video will automatically play.

### 2 Time & Attendance

#### Flexible settings

- Users can schedule attendance rules for fixed / flexible / multi-day shifts based on specific scenarios for offices, factories, stores, and more
- Seamless scheduling management by department, group, or individual, with easy ad-hoc adjustments

#### Convenient attendance options

Based on GEO fencing, on-site and mobile attendance get easy.

#### Efficient employee self-service

Employees can easily check their attendance results and send anomaly / corrective applications to HRs or managers. All these can be done conveniently on web & mobile app.

#### Easy integration with payroll systems

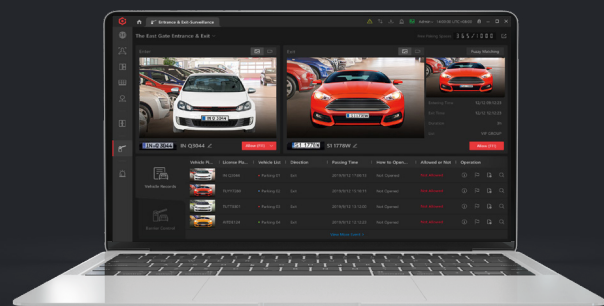
HikCentral Professional integrates widely with third-party software systems such as salary calculation systems, through Open API, database connectivity, and FTP. Multi-dimensional preset reports and custom templates are available.



## 3 Parking Lot

### Vehicle entrance & exit management

HikCentral Professional supports both self-service card or ticket dispensers and integrates with automatic number plate recognition (ANPR) cameras and touch-free, non-stop vehicle authentication to help reduce rush hour congestion.



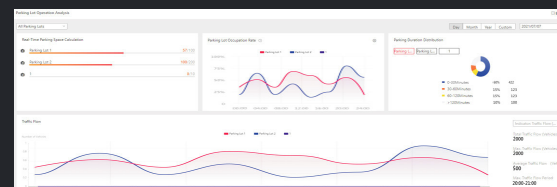
### Self-service parking assistance

Drivers can easily find their vehicles using the self-service query by entering their license plate numbers, which offers a shortest route for quick navigation. Guidance screens and displays are also available to assist in finding available parking spaces, aiming to make the process seamless and efficient.



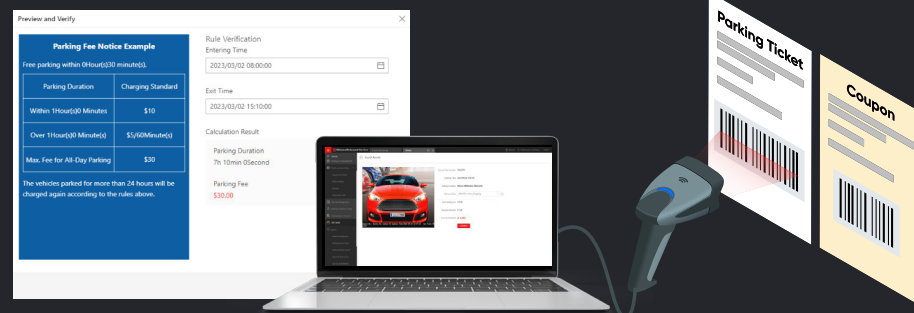
### Advanced statistics and reports

HikCentral Professional enables intuitive and efficient analyses of parking operation and transaction reports. This facilitates in-depth analysis of operations, income, and expenses, assisting with informed decision-making.



### Flexible parking fee calculation

HikCentral Professional offers versatile billing and scheduling options to cater to the diverse requirements of parking lots. This includes, the ability to charge yearly, monthly, or other scheduled time periods, as well as setting specific billing rules for different types of drivers. Moreover, the platform supports charging fees by scanning the parking tickets' barcodes or QR codes.



## 4 Visitor

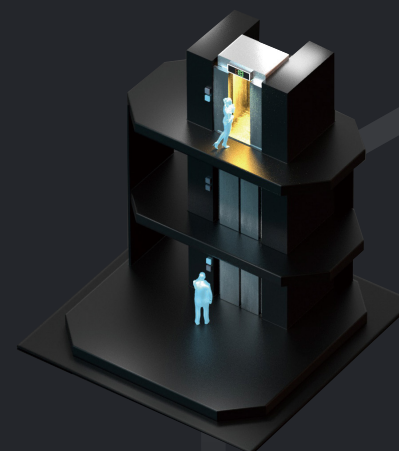
### Visitor management

- Use WhatsApp for convenient visitor pre-registration
- Enhance visitor satisfaction with ANPR vehicle number plate recognition, fast access using ID or face recognition, and self-service checkout at designated locations
- Ensure secure guest visits, control access to specific areas, and maintain a traceable visit record. Alerts are triggered if visitors fail to check out on time
- Enable individual companies in the same building to independently manage their visitors, ensuring visitor privacy and reducing the property management burden



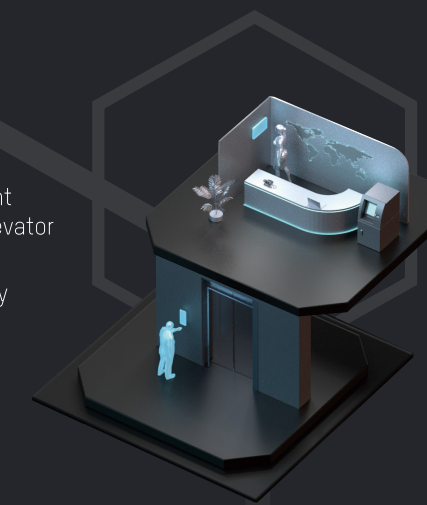
### Elevator control

- Enhance the experience for building residents and workers through efficient permission distribution and remote elevator control
- Improve overall security by effectively managing floor access permissions



### Video Intercom

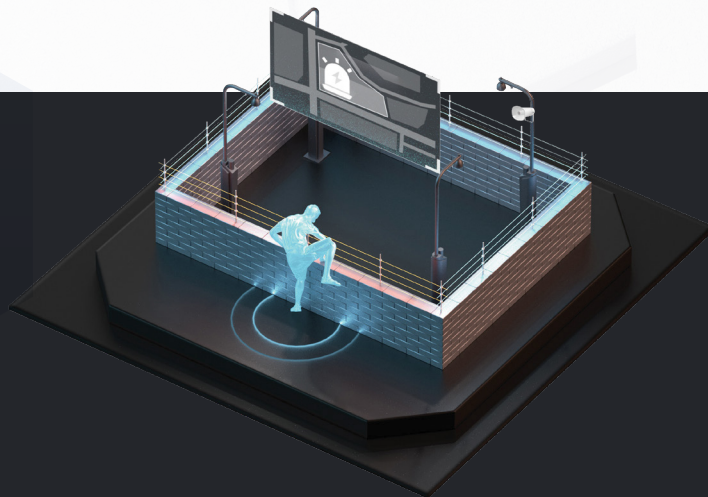
- Serves as a centralized platform to manage the video intercom system
- Increase delivery efficiency through device configuration and rule-setting for device interaction
- Improve property management with call from the indoor or outdoor station to management staff
- Enhance resident living experience with batch notifications to indoor stations





## 5 Intrusion Detection

HikCentral Professional offers comprehensive alarm zone management with real-time monitoring. Instant alerts will be sent to users, helping identify abnormal activities such as intrusions, fire incidents, glass breakage in designated areas. In case of emergencies, one-click assistance through emergency alarm devices is available to enable quick response and effective dispatching.



### Real-time zone monitoring

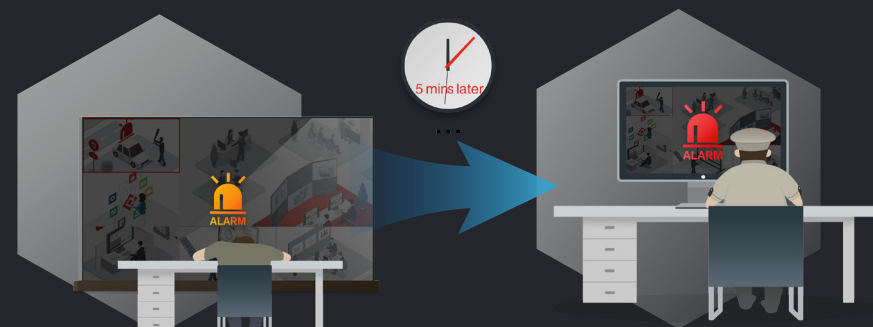
Get a centralized overview of subsystems and visualize the status of alarm zones. This provides continuous situational awareness and enhances overall security effectiveness.

### Tailored deployment planning

Customize arming schedules for specific partitions (areas) to define preferred schedules and alarm linkage for alarm inputs within each partition.

## Efficient emergency alarms

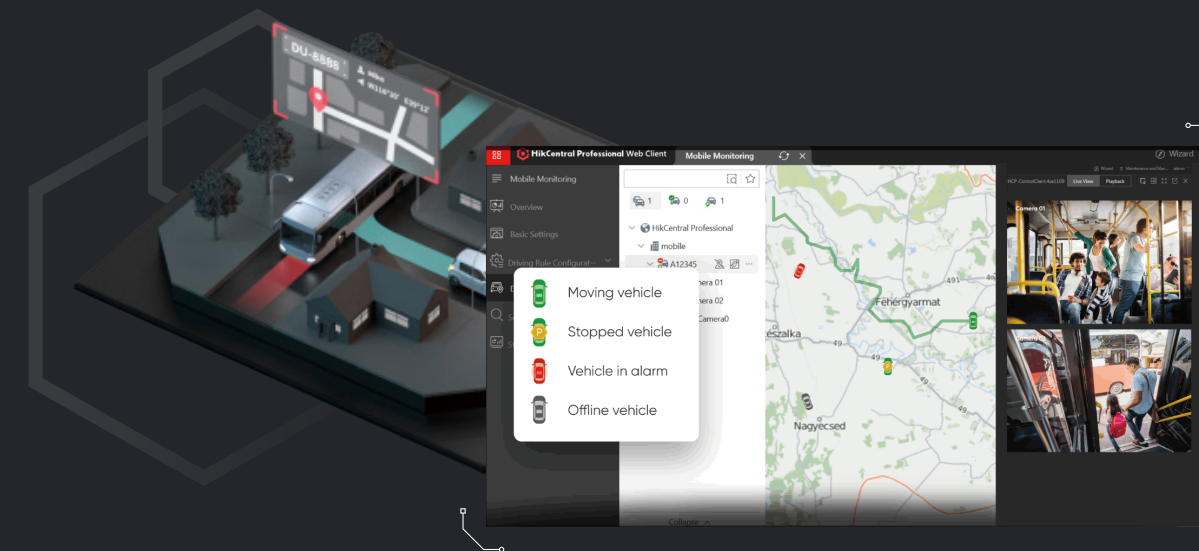
Access an integrated emergency call and intercom system directly within the platform, ensuring timely assistance and coordination.



## 6 On-Board Monitoring

### Efficient on-board monitoring for quick response

HikCentral Professional can serve as a unified platform for mobile security management including real-time GPS positioning and tracking, remote checks on vehicle driving conditions, and more. Accurate detection and alarms enable quick response to abnormal driving events, ensuring the safety of both the driver and the vehicle.



### Flexible and convenient video management solution

Users get flexibility with viewing the live feed, store and play back video clips from the mobile video recorders on vehicles from the command center, upload event videos under mobile network, and back up videos using Wi-Fi.



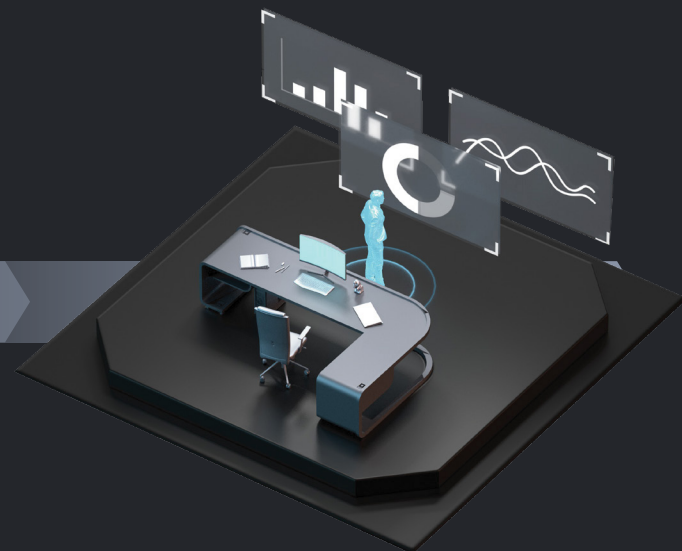
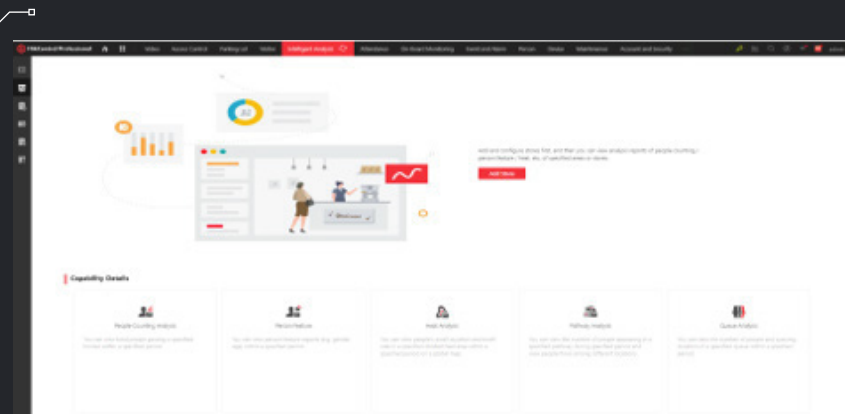
## Customized reports for enhanced operational efficiency

With a diversity of report templates to choose from, users can effectively gain insights on vehicle driving conditions like distance, time, and much more, helping better schedule and optimize operations.

Multi-dimensional analysis reports, scheduled video backups, and evidence management are helpful for thorough problem investigation and documentation.



## 7 Intelligent Analysis



### Single / Multiple Store(s) Reports



### Store comparison reports

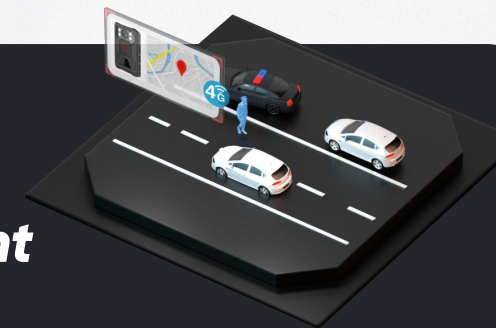


### Store promotional day report



- Gain a holistic understanding and evaluate key metrics such as walk-in rate, people counting, queue analysis, heat analysis, pathway analysis and more
- Ensure accurate customer traffic analysis, including staff and repeat customers, revealing the true "Customer Traffic In" and enabling conversion rate analysis
- Leverage smart commercial analyses with intuitive dashboards and diverse BI reports, including single / multiple store reports, store comparison reports, promotion day report, to help store managers evaluate operations and make data-driven decisions

## 8 Portable Enforcement



### Streamlined law enforcement management

- Enable efficient communication with group intercom, SOS alarm and location tracking
- Use face recognition, fingerprint, card or/and password to quickly access devices

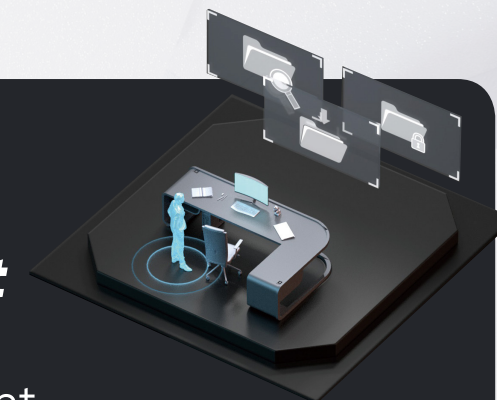
### Unified and flexible file management

Quick retrieval of important recordings, long-term backups, and file-level permission management for regular users and supervisors

### Easy setup and maintenance

- Rapidly distribute devices to persons in batches, standardize settings such as GPS parameters, video resolution
- Offer detailed logs for personnel and equipment use

## 9 Evidence Management



### File management

- Conveniently collect information using multi-clients (mobile, web, control clients) for file uploads, manage and store cross-service evidence files in long term
- Unified management of evidence files from various services, including videos, pictures, audios, and documents uploading in the daily operations
- Long-term backup and efficient retrieval: evidence classification, archiving, retrieval, export, internal and external sharing

### Case management

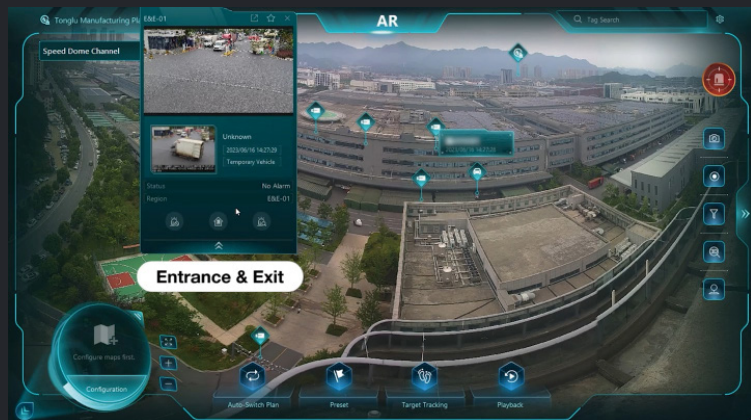
- Users can add multiple associated files into one case, displaying basic information, case content, and operational records
- Manage evidence effectively with strict access permissions, edit videos, add watermarks, organize cases, and sort evidence with data security
- Easily retrieve and share evidence by classifying, searching by location, and facilitating internal and external sharing





## 10 AR

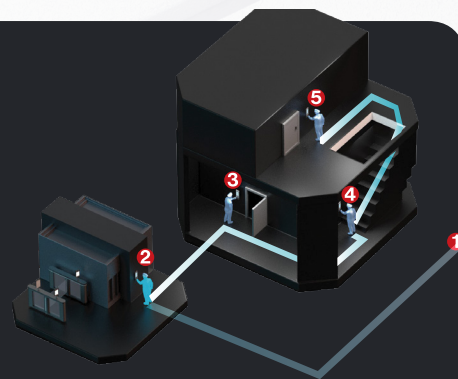
- Provide a complete perception of panorama and details in open spaces such as industrial parks and construction sites, using the "Pic in Pic" mode for finger-based operations that simulate being on-site. Easily access key position cameras without losing the global view.
- Locate key positions on the AR Live Map with tags through simple "Click" and "Filter" buttons
- 3D Target tracking realized on AR augmented devices. Design an efficient process for quick event handling with a closed loop from notification to acknowledgment
- Allow to add various labels to the display, including video, access control, alarms, entry/exit tags and more



## 11 Guard Patrol

Inefficient patrol schedule management and proxy patrolling can mean headaches for security managers. This solution aims to make guided patrols more convenient and efficient.

- Design patrol schedules and routes effortlessly using an intuitive e-map interface
- Security staff check in using access control devices via face recognition, fingerprints, or QR code with all data automatically uploaded to the software
- Report anomalies during the patrol to the center via a mobile app, with all patrolling data automatically uploaded and saved on HikCentral Professional
- Alarms triggered instantly if unauthorized individuals attempt to conduct patrol
- Comprehensive patrol reports enable managers to assess performance effectively
- Allows for QR code patrols in some places where wiring or device installation is not possible



Factories



Logistics parks



Office buildings



## 12 Commercial Display

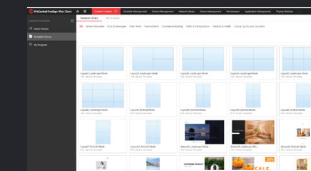


### Rich content creation

Create vivid and attractive advertisements with over 10 content forms and various templates to choose from. The display of people counting programs enables better service to customers.

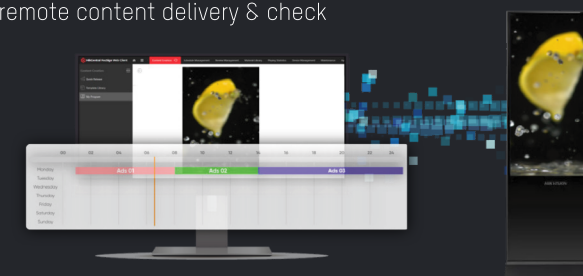
### Quick design process

Choose from multiple pre-installed program templates with customizable layouts, and easily input desired content.

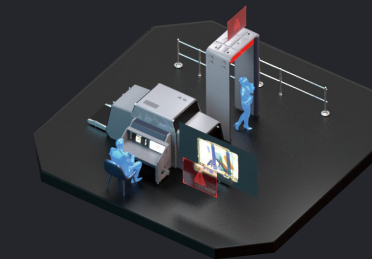


### Remote management

- Access and manage devices remotely across multiple branches, eliminating the need for on-site control
- Enable remote content delivery & check



## 13 Security Inspection



### Threats detection

- Identify a wide range of prohibited items timely and accurately, reducing labor costs and security threats
- Simplify centralized management with real-time detection results, alarm information, and live view

### Under vehicle surveillance system (UVSS)

The under vehicle surveillance system accurately detects anomalies beneath vehicles, significantly reducing security risks. It utilizes a comparison function to provide precise scan results in a single, high-resolution photo with low distortion, ensuring a thorough inspection of vehicles passing through.





## 14 Emergency Mustering

### Instant response to emergencies

When emergencies occur, HikCentral Professional can automatically or manually trigger to start the emergency state with just one click.

### Enhanced evacuation experience

The system will trigger IP speakers for a cycled broadcast of evacuation messages and keep all doors open along the escape route, helping personnel quickly assemble at muster points.



### Augmented security levels for everyone

At the muster points, the security staff can efficiently count and verify everyone's safety. If someone is missing, they can check the most recent locations where stranded personnel swiped ID cards.

## 15 Remote Site Management (RSM)

HikCentral Professional facilitates centralized monitoring, alarm processing and resource management across hundreds or thousands of sites.

### Centralized management of remote sites

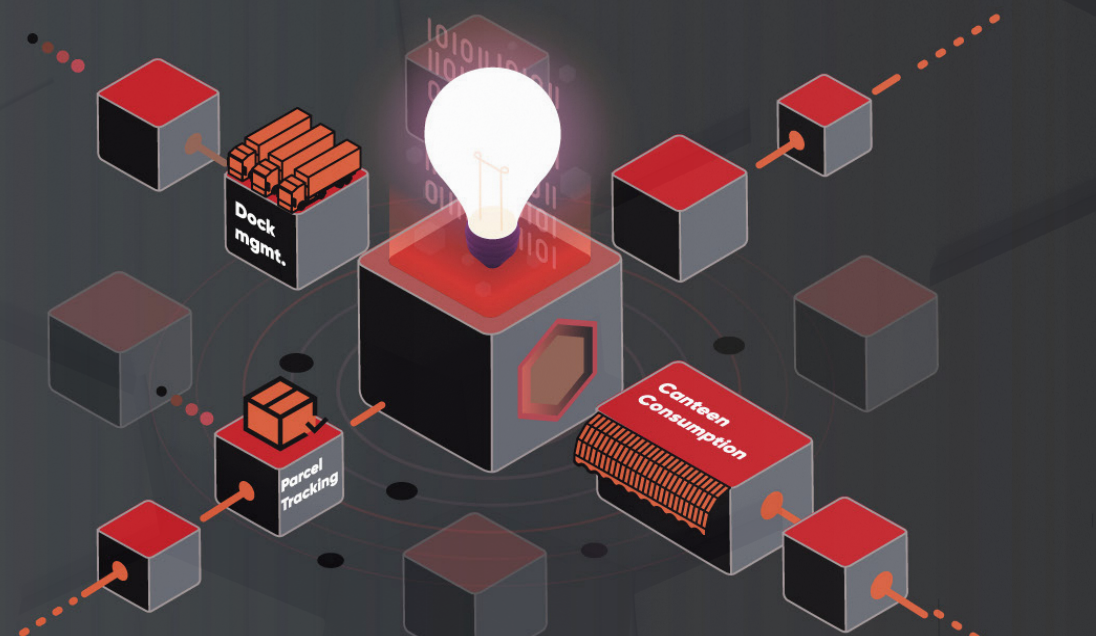
- Manage multi-site resources, providing unified management of cameras, access control, alarms, ANPR recording and search, and support video walls
- Allow for flexible site-specific settings, independent from the central system

### Top-level system capacity

Far exceed regular multi-site solutions in terms of the number of devices, remote sites and concurrent events, making it ideal for large-scale security projects



## Innovative Industrial Applications

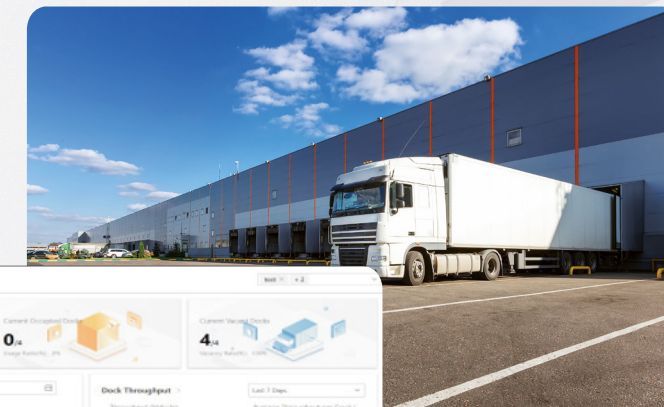
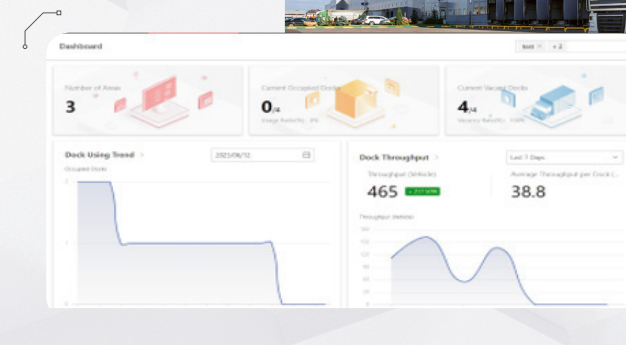


### Dock Management

#### Enhanced Dock Efficiency Tools

- Comprehensive video recording and search ensure all operations are **documented and easily retrievable**
- Real-time visualization of **dock status and insightful data** for decision-making:

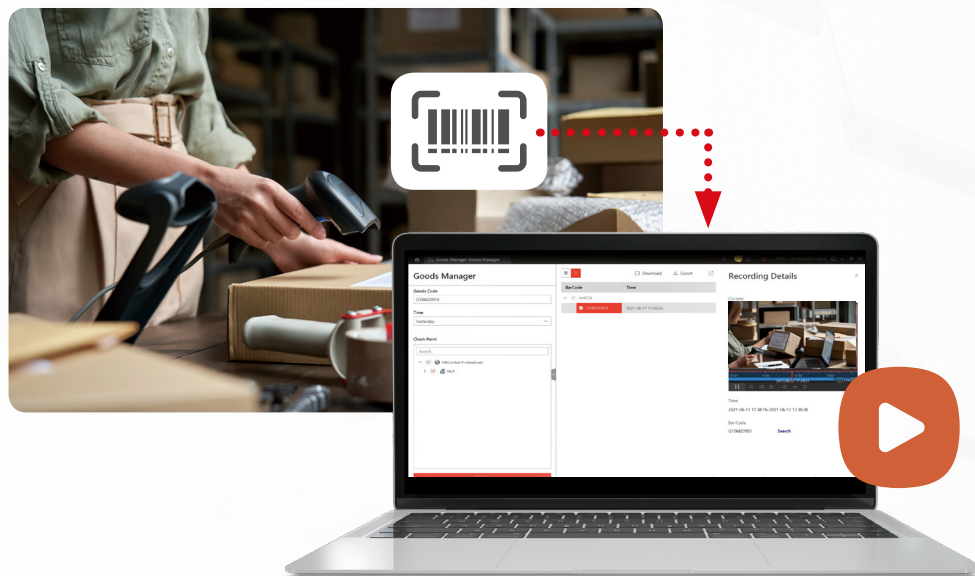
- ✓ Monitor **dock utilization rates** with detailed statistics to optimize efficiency
- ✓ Analyze **dock throughput** to inform decisions on potential business expansion



### Parcel Tracking

#### Efficient and accurate parcel management

- Integrate barcode and video security systems for **complete parcel tracking** across different facilities
- Quickly resolve issues with **targeted parcel search** at checkpoints, ensuring no delays or lost items on conveyor belts
- Simplify identification and tracking using combined data from barcode scanners and cameras, with the ability to **export video and barcode data** for investigation purposes



### Canteen Consumption

#### Advanced Canteen Operation Management

- Manage multiple canteens and merchants, adapting to various project scales with diverse billing methods and consumption patterns
- Customize consumption controls by defining specific times and locations suited to the unique schedules and locations of employees
- Streamline top-ups and subsidies with online management features for quick transactions and clear tracking
- Support additional consumption scenarios such as visitor and offline purchases
- Simplify daily operations with recording and multi-dimensional reporting for transparency and analysis in canteen operations

