

Entertainment Venue Club Pub Hotel Intelligent Solutions

Hikvision's Club & Pub Intelligent Solution offers a centralised platform for device management, smarter operation with boosted efficiency, and more intelligent business insight for gaining customer loyalty and delivering better marketing campaigns.

Car Park Management



- Capture number plates on entry and exit to your venue
- Manage multiple vehicle lists – Monitoring your staff, VIPs, deliveries, and contractors
- Intelligent search – Efficiently search for vehicles using the number plate details
- Automated staff time attendance using biometric authentication
- Understand peak hours of vehicle traffic on daily, weekly, monthly, and annual basis



Main Entrance

Intelligent Metrics Camera

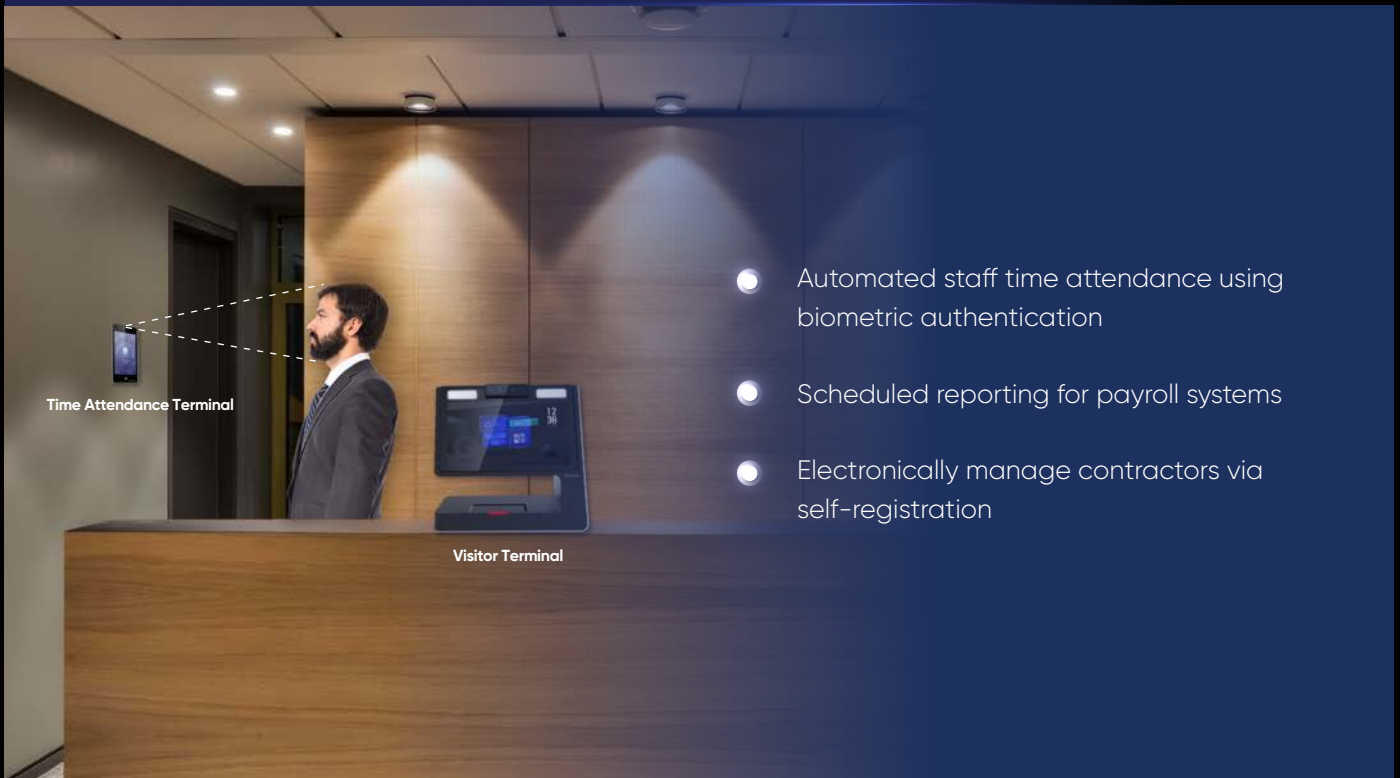
- Real-time notifications – VIPs, self-barred gamblers, banned people
- Intelligent search – Efficiently search for people using attribute filters
- Better understand your patrons with more metrics on who's visiting

Digital Signage

- Digital Display – Centrally manage dynamic marketing materials, specials, events, restaurant/cafe menus
- Schedule contents to suit your customer demographic
- No subscriptions and no more paper waste



Staff and Contractor Management



Gaming Area



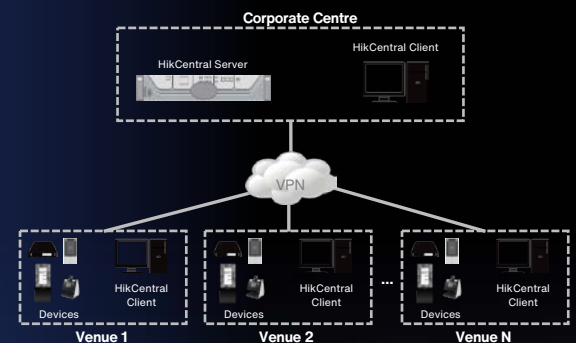
Bottle Shop



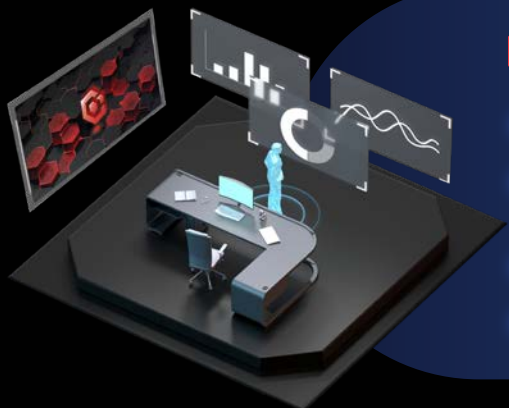
- Real-time notifications – banned people, the person of interest, VIPs/Loyalty Members
- Overlay transaction details from POS machine – Search by keywords – no sale, refund, cash out
- Better understand your patrons with more metrics on who's visiting
- Understand customer flow through the store for marketing
- Digital display – Centrally manage dynamic marketing materials, specials, events
- Create remote alert notifications when customers walk into an unattended store

Control Room

- Central management – CCTV, Time Attendance, Access Control, Digital Signage
- Single/Multi-site reviewing live playback footage
- Produce daily reports for compliance
- Health Monitoring – Centralised management with pro-active and visualised system diagnostics
- Intuitive user interface – Video wall, meaningful reports and customisable dashboard
- Real-time notifications – VIPs, self-barred gamblers, banned people



Product Showcase



HikCentral Professional

- Easy to deploy and use
- A unified security system that enhances management operations
- Personalise your own security system
- Visualised systems, data, and maintenance

Car Park Management



ANPR Camera

- 4MP, DarkFighter
- License plate recognition
- Vehicle attribute



Video Intercom

- 2MP
- Single button
- Built-in card reader



ColorVu Camera

- 24/7 colourful imaging
- Human & vehicle classification
- Two-way audio



Fisheye Camera

- 6MP or 12MP
- De-warping and heatmap
- Built-in MIC

Main Area



Intelligent Metrics Camera

- 4MP, DarkFighter
- Facial recognition
- Human attribute



People Counting Camera

- Dual-lens 2MP
- People counting
- 3D modelling



Digital Signage

- 1080p, Android OS
- 43" or 55" LCD screen
- Floor-standing
- Ethernet and WIFI



Signage Box

- 1080p, Android OS
- 1 HDMI output
- Ethernet and WIFI

Staff & Contractor Management



Time Attendance Terminal

- 7" LCD touch screen
- Facial recognition
- Built-in card reader



Visitor Terminal

- 10.1" LCD touch screen
- Built-in card reader
- WIFI supported



DeepinMind NVR

- 16-ch or 32-ch
- Up to 16-ch facial recognition



HikCentral Pro VMS

- Management
- Operation & report
- Health monitoring



Sydney office: 46 Brookhollow Ave,
Baulkham Hills, NSW 2153
Email: salesau@hikvision.com
Hotline: +61 1300 976 305
www.hikvision.com/au-en/



Hikvision Australia and New Zealand



Learn more
about our solutions



Book a consultant