

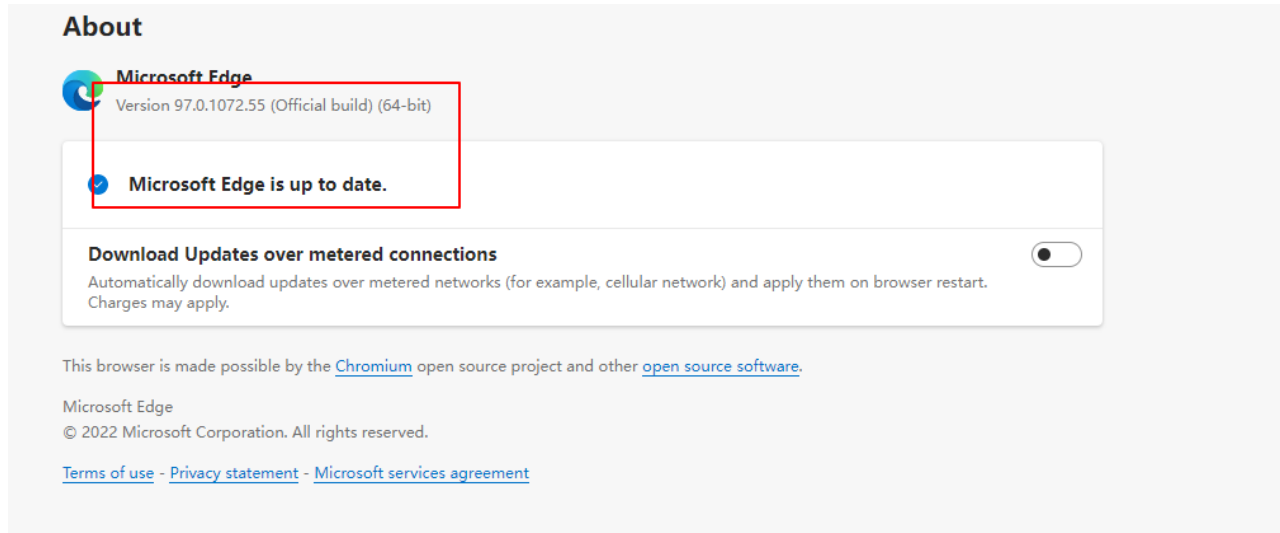


How to enable IE compatibility mode on Microsoft Edge

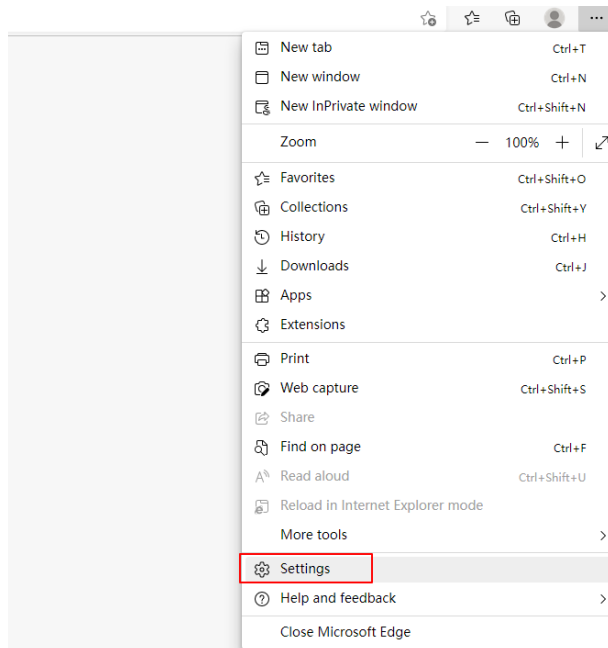


Step 1. Ensure that the Edge browser version is later than 89.

Recommend to use the latest Edge browser version.

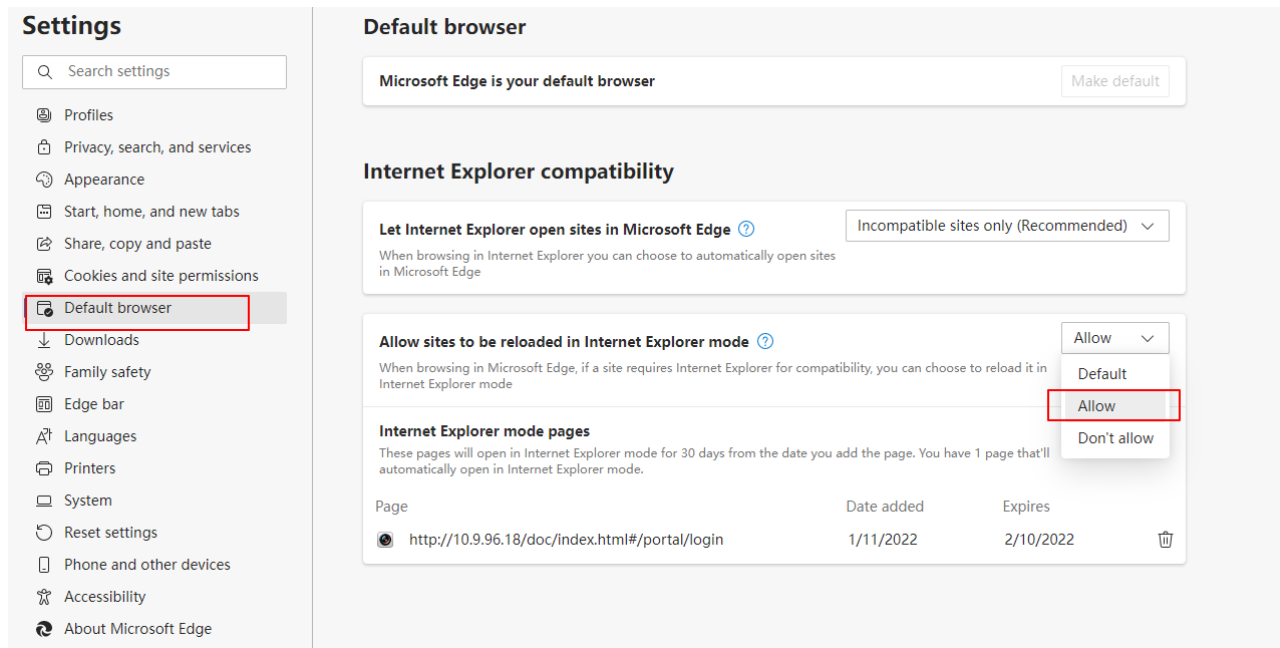


Step 2. Click the drop-down box on the right side of the Edge browser and select Settings to enter.

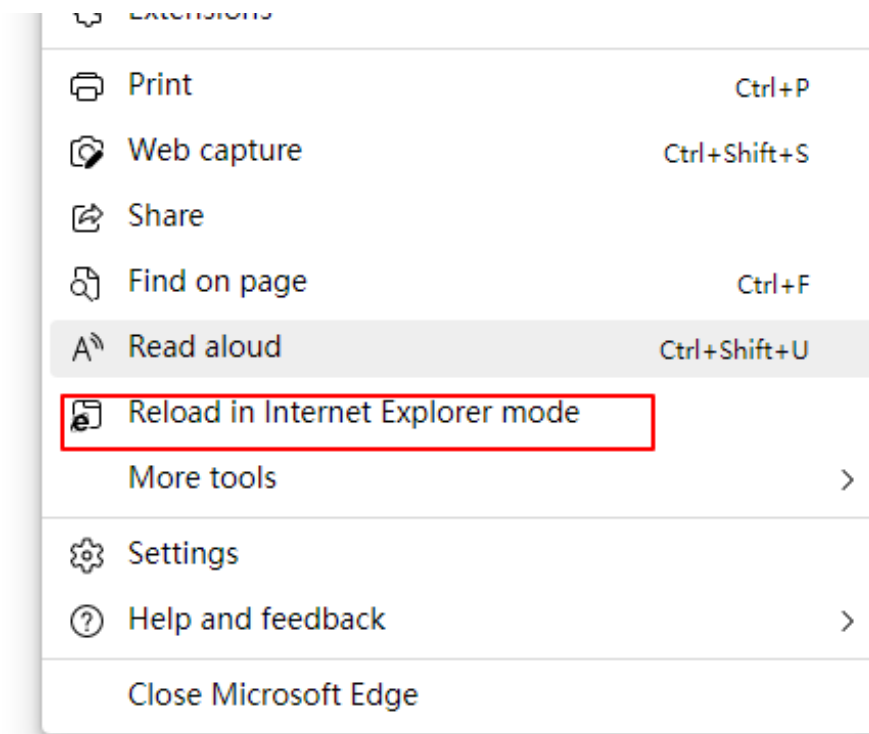


Step 3. Select the default browser, enable allowing the site to

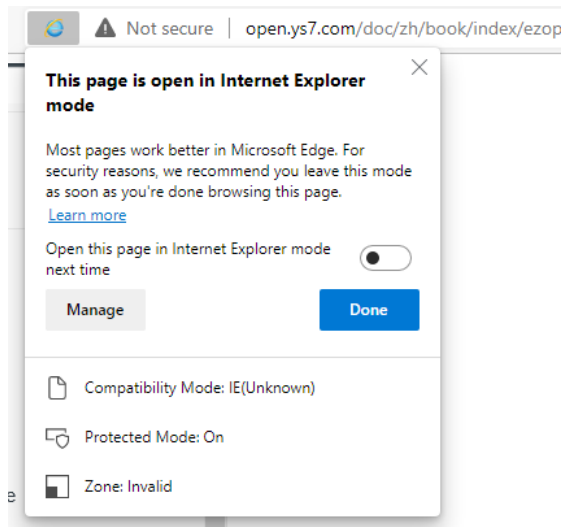
reload in IE mode, and restart the browser as prompted.



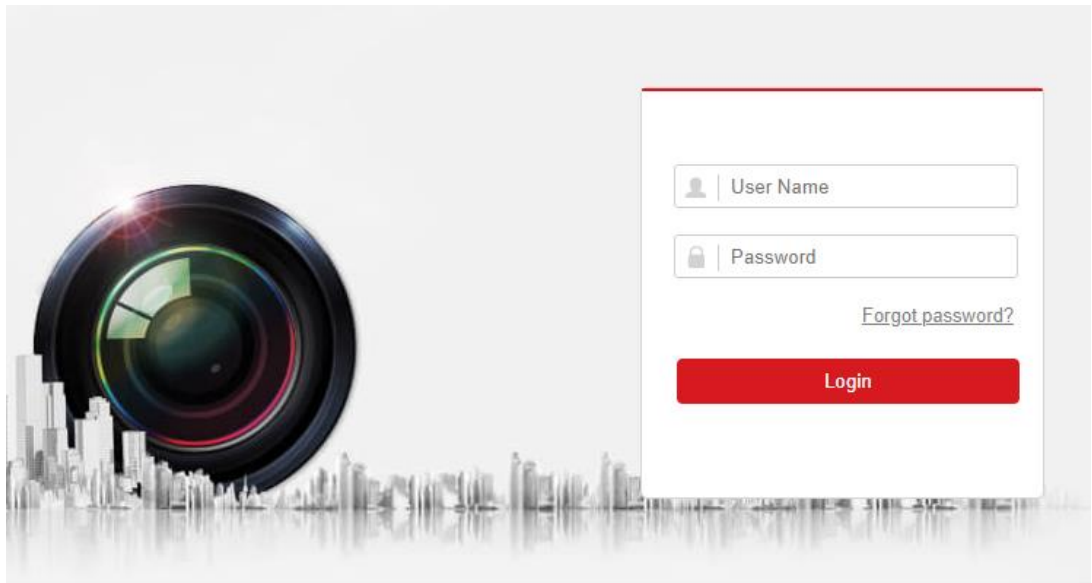
Step 4. Click the right drop-down box and select Reload in IE mode.



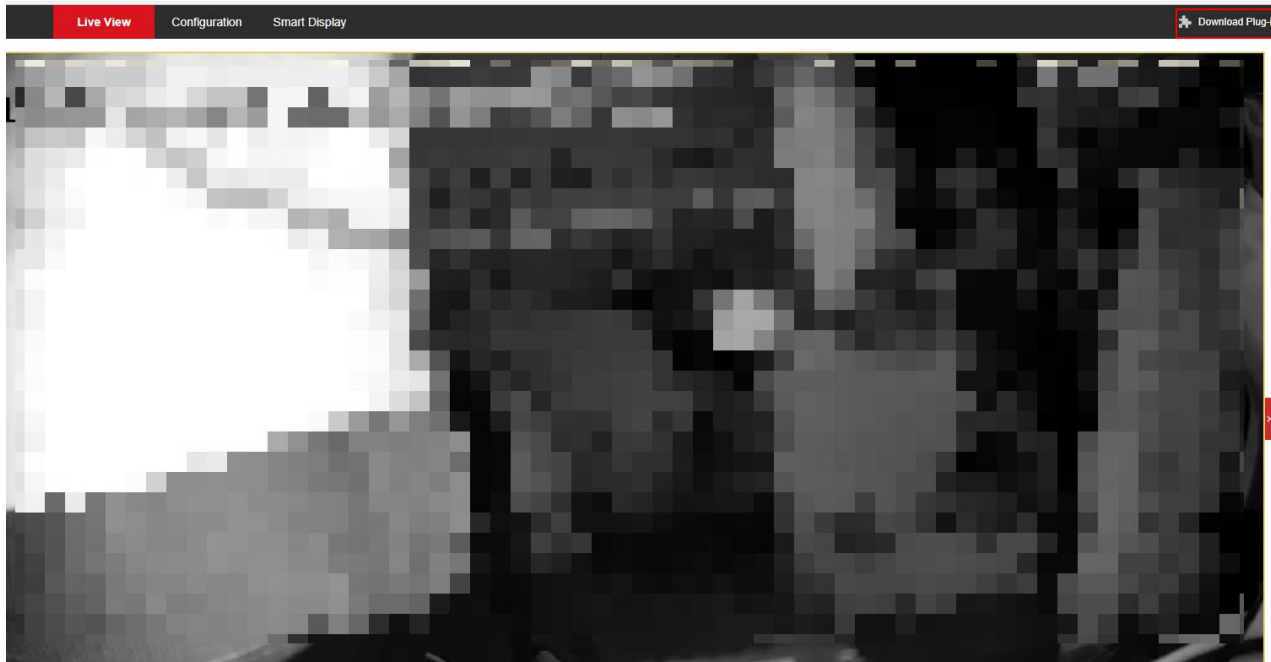
Step 5. It has been switched to running in IE mode.



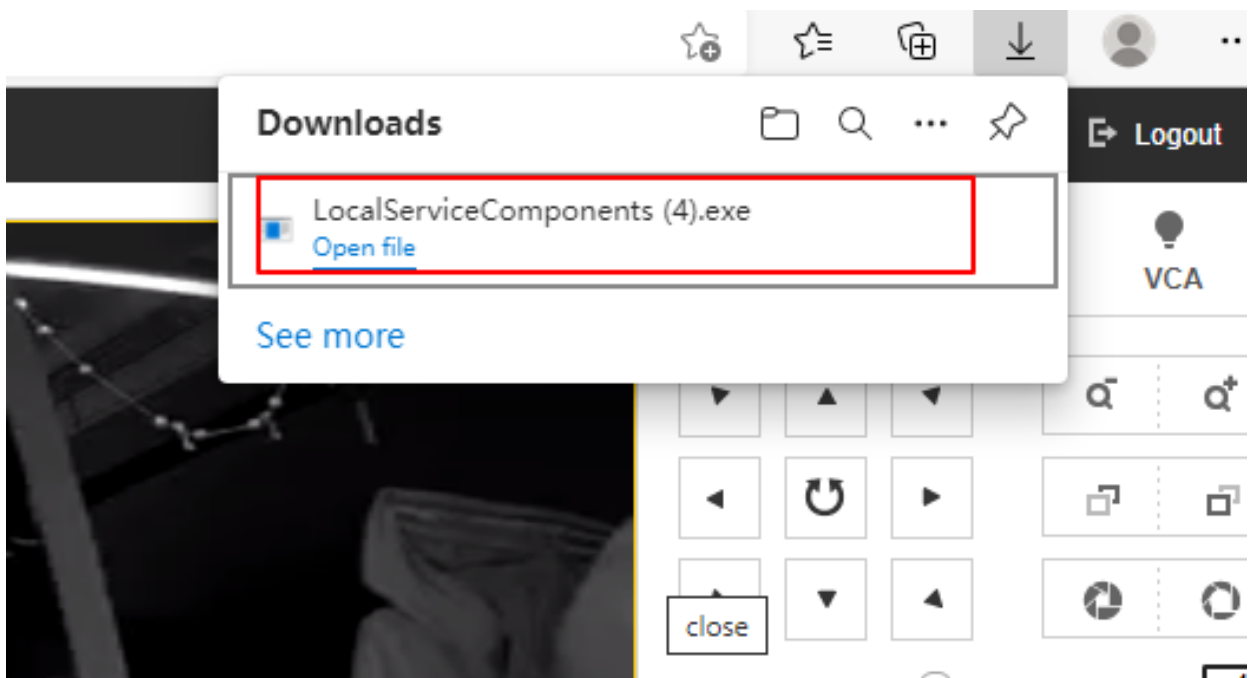
Step 6. Login camera ip.



Step 7. Enter the camera web page and click on the upper right corner to download the Plug-in.



Step 8. Click to open the downloaded file and then can successfully preview the camera



First Choice for Security Professionals

***HIK*VISION Technical Support**