

PRIVACY REDACTION SOLUTION 2.0



Background

As society develops alongside the advancement of science & technology, people are paying more attention to personal privacy.



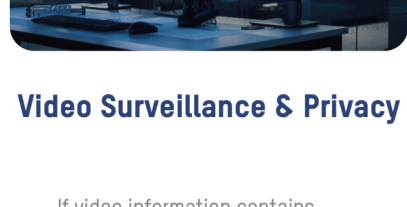
Regulation

GDPR: The UK Data Protection Act 2018 - Everyone responsible for using personal data has to follow strict rules called 'data protection principles'.



Privacy & Security

Privacy information shall be used fairly, lawfully and transparently, for specified, explicit purposes, in a way that is adequate, relevant and limited to only what is necessary.



Video Surveillance & Privacy

If video information contains personal data of an individual and that of third parties, security companies will need to redact the footage to protect people's privacy when dealing with data subject access requests.

Targeted Application Scenarios

Redaction in live video



Entrance / Cashier Desk / Lobby

Display the live surveillance video without leaking personal privacy on a public monitor.

Redaction in recorded video



Monitoring Centre

Privacy redaction before sending incident video footage to a police officer or related parties.

Solution Introduction

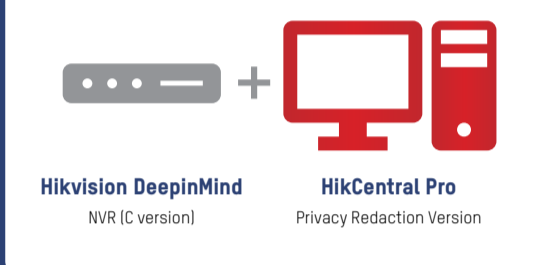
Solution 1: NVR Only



NVR Local Output

- Live Face/Body Redaction [pixelation mode only] via NVR local output with fixed mosaic area configurable
- On-premises live video redaction with better security

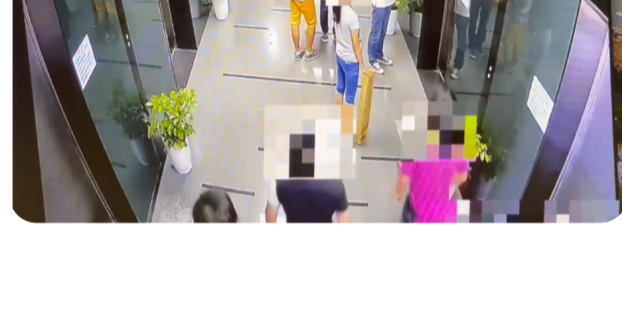
Solution 2: NVR & HikCentral



HikCentral

- Live Face/Body Redaction [pixelation mode only] via NVR local output with fixed mosaic area configurable
- On-premises live/recorded video redaction with better security
- Live Face/Body Redaction on HikCentral with user permission control
- Upload Hikvision video clips for video redaction
(NVR firmware used for live redaction is different from the NVR firmware used for recorded video redaction. Two NVRs are required if both live redaction and recorded video redaction need to be applied.)

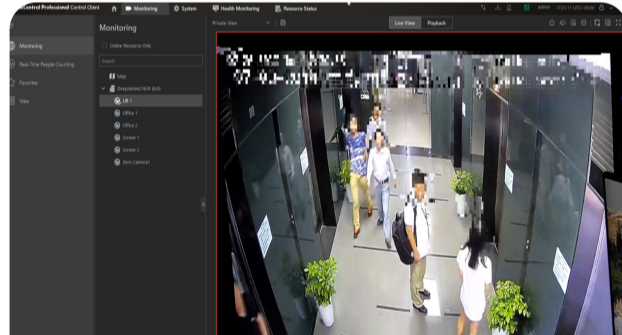
Live Video Redaction on NVR Local Output



- Choice**
 - Full Body OR Face
- Mosaic Mode**
 - Pixelated
- Flexible Control**

- One simple click to turn on and turn off face/body redaction [pixelation mode only] in NVR's local live view interface.
- Fixed mosaic area can be added to the live video.
- Each 77/96 series DeepinMind NVR supports 8-ch live redaction at 1080P.

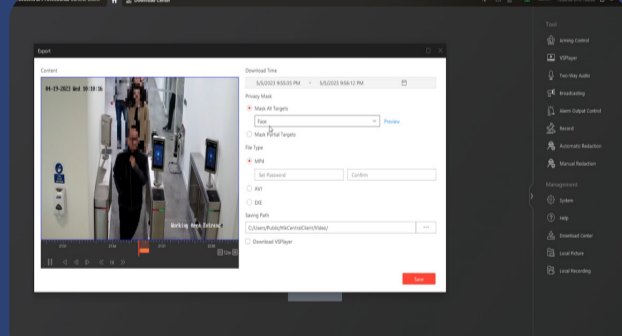
Live Video Redaction on HikCentral



- Choice**
 - Full Body OR Face
- Mosaic Mode**
 - Gaussian OR Pixelated
- Flexible Control**
- User Permission Control**

- One simple click to turn on and turn off face/body redaction on HikCentral live view interface.
- Support user permission control on the removal of mosaic (By default live video redaction is mosaic mode).
- Fixed mosaic area can be added to the live video (via NVR configuration menu).
- Each 77/96 series DeepinMind NVR supports 8-ch live redaction at 1080P.

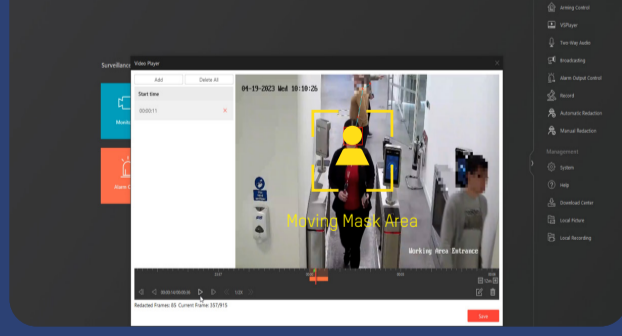
Automatic Redaction on Recorded Video



- Choice**
 - Mask OR Unmask OR Mask
- Unlimited usage of video uploading**
- On-premises solution has better security**

- Upload Hikvision recorded video footage for automatic video redaction with selectable targets.
- Users can upload video footage for redaction for unlimited times, as long as the redaction feature is enabled.
- On-premises redaction solution gives user better security with full control of personal privacy data.

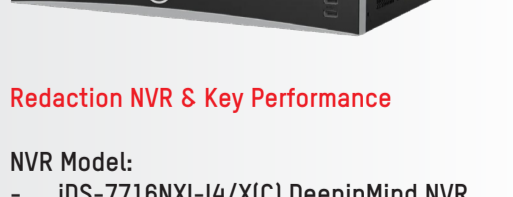
Manual Redaction on Recorded Video



- Draw moving mask boxes**
- Unlimited usage of video uploading**
- On-premises solution has better security**

- Upload recorded video footage for manual redaction, which allows drawing moving mask area to cover moving targets.
- Users can upload video footage for redaction for unlimited times, as long as the redaction feature is enabled.
- On-premises redaction solution gives user better security with full control of personal privacy data.

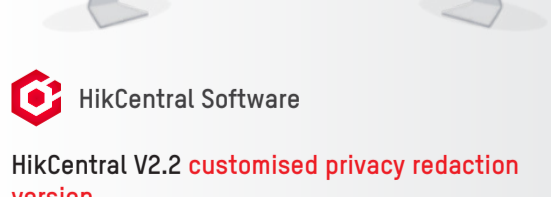
Product Showcase



Redaction NVR & Key Performance

- NVR Model:**
- iDS-7716NXI-I4/X(C) DeepinMind NVR
 - iDS-7732NXI-I4/X(C) DeepinMind NVR
 - iDS-9632NXI-I8/X(C) DeepinMind NVR

Customised NVR firmware required.
Different customised firmware required for live video redaction vs recorded video redaction.



HikCentral Software

HikCentral V2.2 **customised privacy redaction version**.
Camera base license and **Redaction module license** required.

Redaction module license valid for one-year after activation.

HikCentral Client PC Requirements

- CPU: Intel® Core™ i7-7700k @ 4.2 GHz
- RAM: 16 GB
- Graphic Card: NVIDIA GeForce GTX 1050
- NIC: GbE Network Interface Card

NOTE: Human detection accuracy in redaction is not 100%. Accuracy is related to the installation scenarios including lighting conditions, camera installation angle, target distance, etc. Please contact Hikvision for more details.