

# HIKCENTRAL WORKSTATION

- ▶ HikCentral Professional installed by default
- ▶ Expandable Licence Supported  
\*Maximum expansion and performance dependent on hardware specification



HikCentral Workstation is a cost-effective unit embedded with HikCentral Professional software and Windows operating system. Combining the HikCentral Professional server and client, it creates efficient management of the live feed, playback, facial recognition, ANPR, access control, video intercom, alarm management, and more. It is used widely in small- to medium-sized projects and Hikvision's "solutions by scenario."

- ▶ Efficient and comprehensive **video security**
- ▶ Flexible **vehicle entrance & exit modes** and authorisation rules
- ▶ Easy and powerful **access control** management

## Product Specification

Key Feature	Workstation/32	Workstation/32 upper limit with inclusive expansion	Workstation/64	Workstation/64 upper limit with inclusive expansion
Cameras (Including ANPR Cameras and Cameras with Face Capture Function)	32	64	64	128
ANPR Cameras	4	8	8	16
Cameras with Face Capture Function	2	4	4	8
Access Points (Doors + Outdoor Station)	8	16	16	32
Video Intercom (Including Indoor Station)	8	64	16	128
Alarm Inputs	32	64	32	128
Alarm Pictures Receiving	5 per second	5 per second	10 per second	10 per second
Control Client Decoding Performance	6 @ 1080p	6 @ 1080p	8 @ 1080p	8 @ 1080p
Expandable Modules	Temp and mask, Entrance and Exit	Temp and mask, Entrance and Exit, Attendance, Visitor, Business Intelligence Report <i>*Other modules need to be analysed on a case-by-case basis</i>	Temp and mask, Entrance and Exit	Temp and mask, Entrance and Exit, Attendance, Visitor, Business Intelligence Report, Video Wall <i>*Other modules need to be analysed on a case-by-case basis</i>



### Expandable Licence

Inclusive Expansion License allows more Channel Resources and Functional Modules

## Benefits



### Integrated In One Unit

Hardware, operating system and HikCentral Professional software



### Plug & Play

No additional activation required



### 3 Years Aftersales Service

Covering hardware, software and operating system



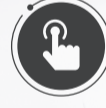
### Cost Effective

HikCentral-Workstation is a cost-effective all-in-one unit embedded with HikCentral Professional software and Windows operating system. It is used widely in small- to medium-sized projects and Hikvision's "solutions by scenario."



### Designed for SMB

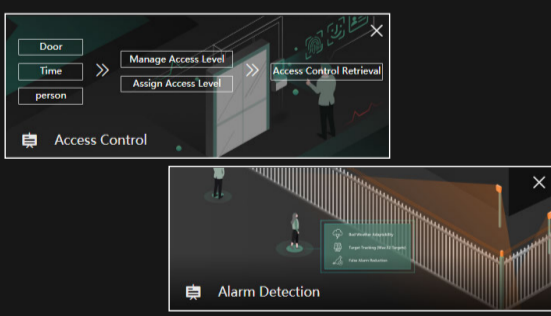
Combining the HikCentral Professional server and client, it creates efficient management of the live feed, playback, facial recognition, ANPR, access control, video intercom, alarm management, and more.



### Ease of Use

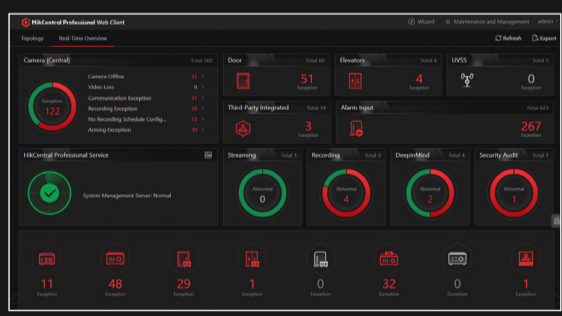
Embedded wizard makes it easy for users to learn and configure. Customised control panel can be self-defined by different operators, so that each operator is able to focus on his own part. System status can be visually displayed in real time, as well as trackable history records, maintenance easier than ever.

## Product Features



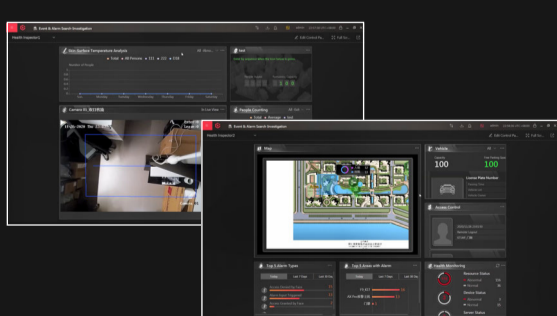
### Easy Operation

Embedded wizard for video, access control, entrance & exit, alarm detection and signage applications, easy for users to learn and configure.



### Easy Maintenance

Visual display system status in real-time, to quickly notice and locate abnormal situations. All system history records are trackable.



### Self-defined Control Panel

On control client, operator can self-define their own control panel, that each individual is able to focus on their own part and not be effected by extra information.



### Application Linkage

Operators can build linkage between different applications. E.g. access control detects intrusion and triggers CCTV to do recording.