

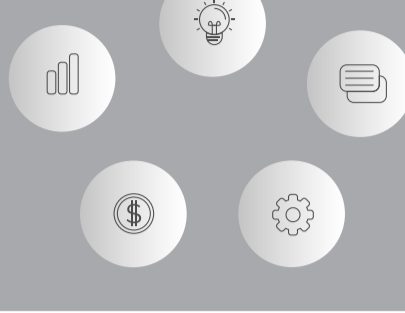
OPTIMUS



Honeywell Galaxy Integration

Introduction

When Hikvision CCTV and Honeywell Galaxy alarm systems are used in the same project, customers are always looking for a central management platform that can manage all devices. This is where **Hikvision Optimus Solution** can help your business.



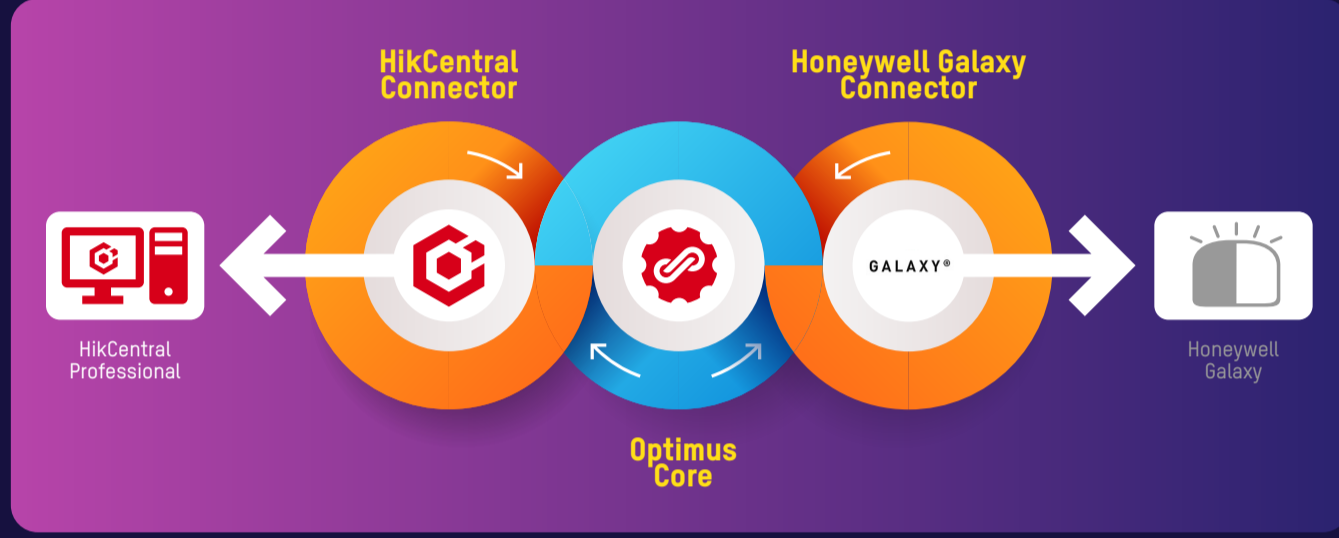
What we offer

Integrate Honeywell Galaxy alarm system with HikCentral Professional via **Optimus Honeywell Connector**, providing:

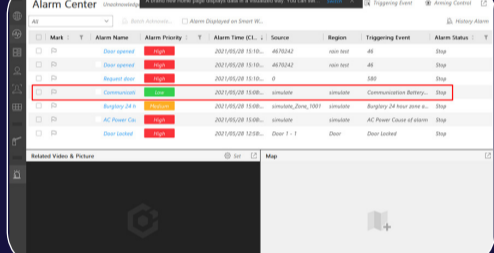
- Centralised management of both Hikvision and Honeywell devices/resources on HikCentral Professional.
- Honeywell events and alarms sent to HikCentral Professional, linking Hikvision camera recording or PTZ preset action.
- Honeywell resources manual control on HikCentral Professional control client, or use Hikvision events to trigger Honeywell resources control.



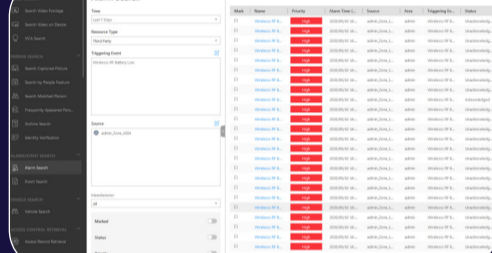
Solution Structure



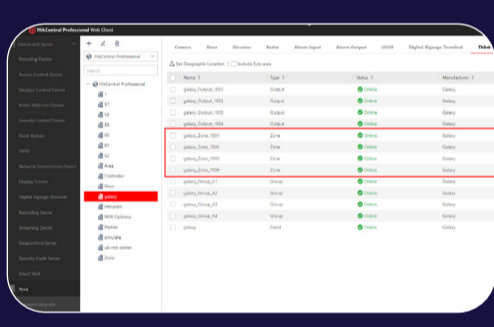
Solution Features



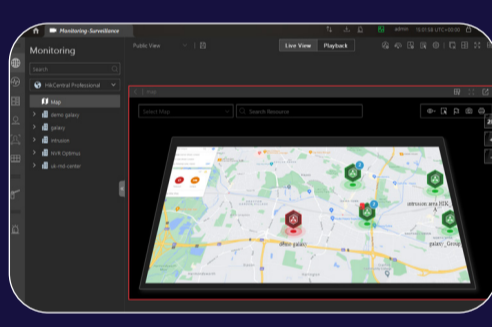
- 1. Receive real-time Galaxy events and alarms on HikCentral Alarm Centre



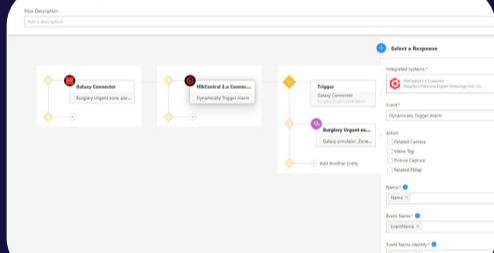
- 2. Search Galaxy events and alarms history on HikCentral control client



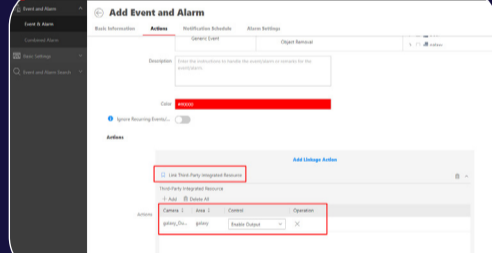
- 3. Synchronise Galaxy resources on Optimus and display them on HikCentral web client



- 4. Display and manual control Galaxy resources on HikCentral E-map



- 5. Galaxy alarms trigger HikCentral actions. For example, Galaxy zone isolated event triggers Hikvision camera recording



- 6. HikCentral event triggers Galaxy actions. For example, Hikvision camera line crossing event triggers Galaxy relay output.

Solution Values



Resource Central Management
Manage both Hikvision and Honeywell products centrally on HikCentral client's user-defined group and E-map. Operator no longer needs to switch between multiple platforms.



Easy To Use Graphical User Interface
Intuitive and friendly user interface to synchronise resources between two systems and create a unique workflow to set up linkages across devices.



Accurate intruder detection
Combine advantages of Hikvision video surveillance detection and Galaxy intruder detection to provide immediate alarm notifications with video footage for reviewing.

Product Showcase

HikCentral Professional (V2.0 and above)

Hikvision's integrated security software designed to meet versatile security challenges in one platform. Centralised management for video surveillance, access control, alarm, vehicle, business intelligence, commercial display and much more. While protecting people and property, it makes daily operations more efficient, and helps various kinds of users make smarter decisions.



Hikvision Optimus (V1.3.1 and above)

Optimus is a system-level middleware product aiming to build up an information bridge between HikCentral Professional and third-party systems. By using Optimus, third-party resources such as events, alarms, access points can be imported into HikCentral Professional. Additionally, the user can control or create linkages between physical resources across systems.



Honeywell Galaxy (Galaxy SIA level4 required)

Galaxy Dimension security range has innovative intrusion and door control systems to protect commercial and high-end residential premises. User-friendly and cost effective, the systems provide a wealth of features including wireless options and remote management tools for security managers.

