



Hikvision HeatPro Series Thermal Cameras

Professional protection made simple

Designed for any amount of light

Sees the unseen

Radically reduces false alarms

Dedicated to bringing professional protection solutions to the mass market, Hikvision's HeatPro Series Thermal Cameras provide perimeter protection with unparalleled accuracy, and fire detection with superlative sensitivity. The cameras hit the target for cost and performance in a variety of residential, commercial and industrial applications.



HIKVISION[®]

Advantages of Thermal Cameras for Fire Prevention



**Early detection
and warning**



**Temperatures
visualized**



**Support for
flexible rules & alarms**

Intelligent Fire Safety Alerts

Leaving a burning or smoldering fire unattended can be really dangerous, in residential, commercial, or industrial environments. Such occasions include indoor waste facilities, E-chargers in parking lots, warehouses, factories, and more. Bi-spectrum HeatPro Series Thermal Cameras automatically identify risks on these occasions. If the temperature exception is detected by the thermal lens, the camera will trigger the alarm. Temperature information is visualized to help double-check problems and improve problem solving efficiency.



Better Target Identification

Human and vehicle targets are accurately distinguished and classified.



Separation of Humans and Vehicles

Conventional cameras may fail to detect the overlapping of human and vehicle targets. But Hikvision's HeatPro Series Thermal Cameras support human and vehicle classification, always distinguishing human and vehicle targets so that users respond only to those of real concern.



Detection of Grouping

When people gather into groups, HeatPro Series Thermal Cameras can still accurately identify each individual and classify them accurately.

Higher Agility and Adaptability

Targets are detected quickly, even in very challenging conditions.

Challenging Temperature Conditions

When exposed to high temperatures, background infrared radiation can be similar for both human and vehicles. HeatPro thermal cameras accurately distinguish targets from their background even with limited temperature-data differences.



Challenging Viewing Angles

HeatPro Series Thermal Cameras detect targets moving straight towards the camera with comparatively small perceivable displacements.



3-Step VCA Configuration

Simpler and faster deployment for SMB users with only a 30 sec setup time



1 Enable VCA



2 Draw a detection area



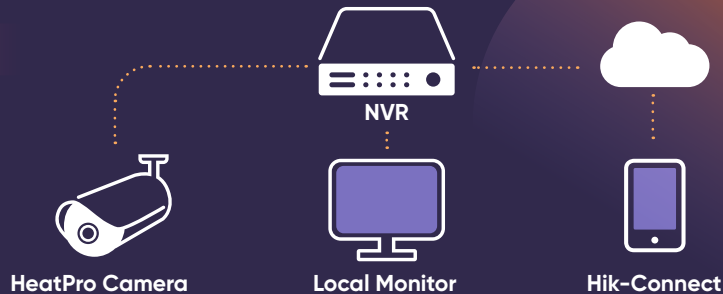
3 Set human/vehicle as the target

Demand-based Product Applications

HeatPro Series Thermal Cameras combine with Hikvision's other products to meet diverse needs of users.

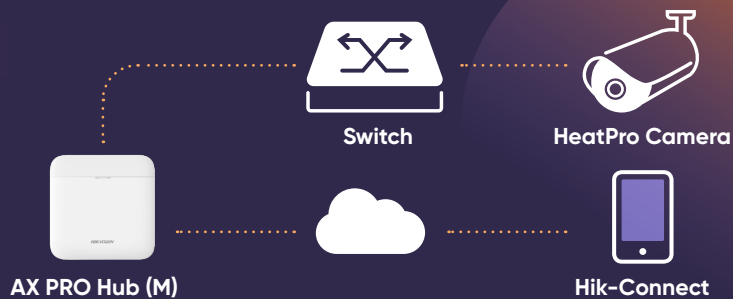
Fundamental Protection

Connected to an NVR, HeatPro cameras provide highly-efficient security protection of places like villas, communities, and groceries.



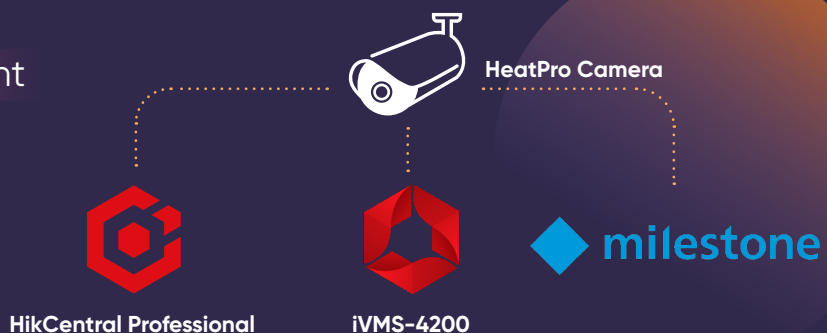
Intrusion Verification

Linked with AX PRO Hub, HeatPro cameras capture real-time video clips to verify alarms whenever an intrusion event happens.



Large-scale Deployment

HeatPro cameras can be deployed on a large scale for more complex projects like chain stores and industrial parks, and managed in a centralized way.



Field Demonstrations

HeatPro Series Thermal Cameras have been tested at a number of demonstration sites, giving field-proven results of favorable, minimized false alarm rates.



Office building entrance



Car park



Community



Villa

Effective Coverage Short Range (20-70m)

HeatPro Series Cameras



VCA Range
(Humans: 1.8 x 0.5 m)

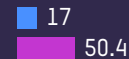


VCA Range
(Vehicles: 1.4 x 4.0 m)

DS-2TDxx17-2/QA



DS-2TD1228-2/QA



DS-2TDxx17-3/QA



DS-2TDxx28-3/QA



DS-2TDxx17-6/QA



DS-2TDxx28-7/QA



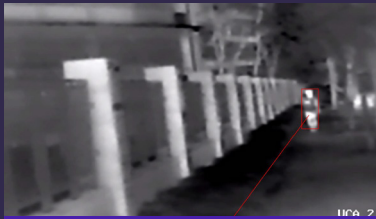
DS-2TD2617-10/QA



DS-2TD2628-10/QA



Application Scenarios



Villas/Communities



Office buildings



Construction sites



Car parks



Grocery stores



Warehouses

Product Showcase

- Resolution: 256 x 192 for thermal; 4 MP for visible light
- VCA: Line crossing, intrusion
- Temperature accuracy: $\pm 8^{\circ}\text{C}$; $\pm 2^{\circ}\text{C}$ or 2% (-T)
- Temperature measurement range: -20 to 150°C ; -20 to 550°C (-T)
- Built-in strobe light and audio alarm



Bi-spectrum

Turret

DS-2TD1228-2/3/7 QA
DS-2TD1228T-2/3 QA

Bullet

DS-2TD2628-3/7/10 QA
DS-2TD2628T-3/7 QA

- Resolution: 160 x 120 for thermal; 4 MP for visible light
- VCA: Line crossing, intrusion
- Temperature accuracy: $\pm 8^{\circ}\text{C}$;
- Temperature measurement range: -20 to 150°C ;
- Built-in strobe light and audio alarm



Bi-spectrum

Turret

DS-2TD1217-2/3/6 QA

Bullet

DS-2TD2617-3/6/10 QA

High quality detector with 10 years guarantee



Hikvision Europe
Dirk Storklaan 3
2132 PX Hoofddorp
The Netherlands
T +31 23 5542770
info.eu@hikvision.com
www.hikvision.com

 @HikvisionEurope

 @HikvisionEurope

 HIKVISION Europe

