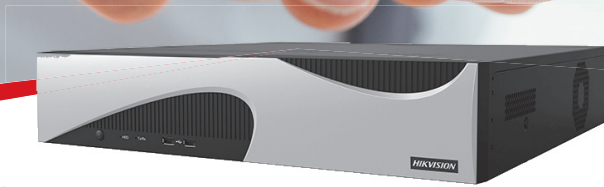


HIKVISION®



SEEKING VMS PARTNERS
FOR COLLABORATION
HIKVISION WORKSTATION

WHY HIKVISION WORKSTATION



Hikvision provides hardware modules with rich experience in hardware development.

VMS partners provide software modules without changing the user interface to keep user habits and preferences.

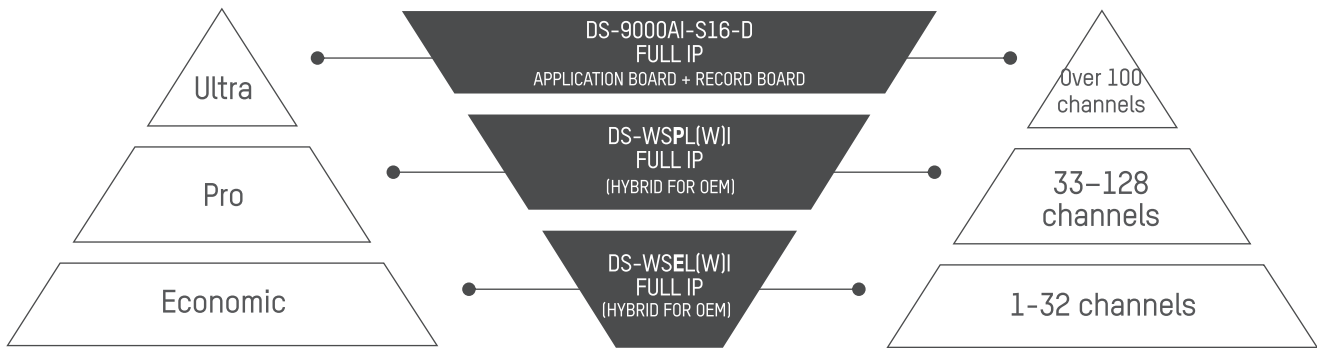
Excellent user experience & Budget-friendly projects

WHO WE ARE SEEKING FOR COLLABORATION

1 System Integrators	2 VMS Vendors	3 Software Distributors
Focus on software and combine Hikvision Workstations with their VMS to create PC NVR or VMS Client.	Choose Hikvision Workstations to create hardware solutions, such as recorders, servers, and clients under the VMS brand.	Purchase Hikvision Workstations to offer hardware + VMS packaged solutions.



PRODUCT MATRIX



ADVANTAGES



Leading Hardware and Software Provider

Hikvision offers a wide range of solutions to customers through unrivaled R&D capability in both hardware and software.



Rich Interfaces for Diverse Features

Abundant PoE ports, alarm I/O ports and HDD slots to integrate diverse CCTV features



Superior Cost Efficiency

A wide range of products from economic to ultra series; higher performance-cost ratio compared with a conventional PC or server

PRODUCT SHOWCASE

Series	Appearance	Model	Pre-installed OS
Ultra 100 to 256 ch		DS-9000AI-S16-D	Ubuntu Linux
Pro 33 to 128 ch		DS-WSPW(L)I-T2 DS-WSPW(L)I-T4 DS-WSPWI-T8 DS-WSPLI-T8	Win 10 / Ubuntu Linux
Eco 1 to 32 ch		DS-WSEWI-T2 (/8P) DS-WSELI-T2 (/8P) DS-WSELI-T4 (/16P) DS-WSEWI-T4 (/16P) DS-WSEWI-T2/4200	Win 10 / Ubuntu Linux
Eco [1, 32] ch		DS-WSELI-T4/16H DS-WSEWI-T4/16H DS-WSELI-T8/16P/16H DS-WSEWI-T8/16P/16H	Win 10 / Ubuntu Linux (hybrid system to connect both analog and network cameras)

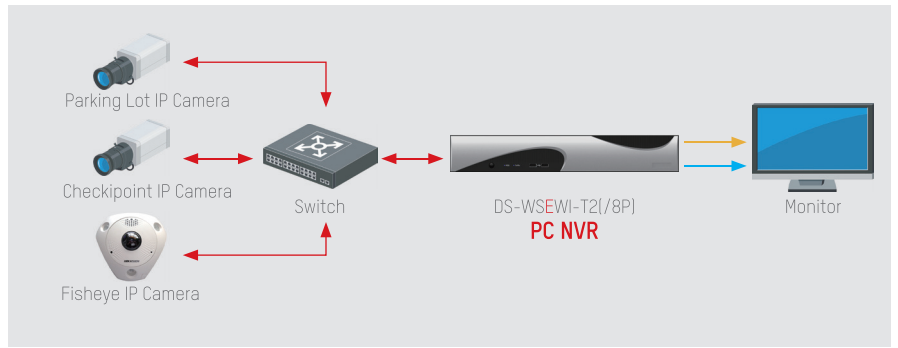
*Note: Eco series DS-WSEWI-T2/4200 has Hikvision iVMS-4200 software pre-installed.

PC NVR

Ideal for single-site projects as a PC NVR

Key Functions

- Installation of a third-party VMS
 - Compatibility with PoE cameras
 - On-site management
 - Video recording and decoding
- * The DS-WSEWI-T2/4200 model does not even need a third-party VMS.



— Network Cable — HDMI Cable — VGA Cable

APPLICATION SCENARIOS



Museums



Retail Centres



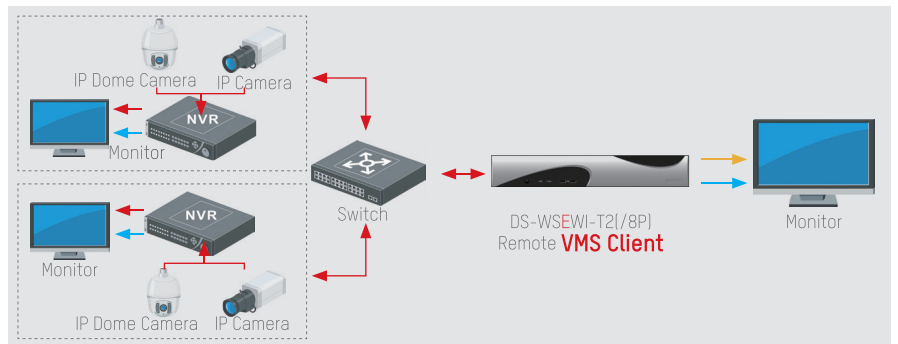
Gymnasiums

VMS CLIENT

Ideal for small and medium multi-site projects as a VMS Client

Key Functions

- Installation of a third-party VMS
 - Remote and centralized management
 - Video decoding
- * The DS-WSEWI-T2/4200 model does not even need a third-party VMS.



— Network Cable — HDMI Cable — VGA Cable

APPLICATION SCENARIOS



Libraries



Car Dealerships



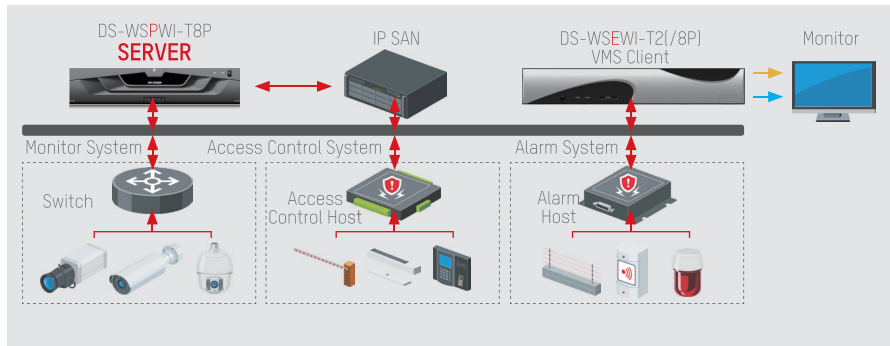
Petrol Stations

SERVER

Ideal for less-than-128-channels business management projects as a Server

Key Functions

- Installation of a third-party VMS
- Centralized management of up to 128 channels
- Video recording



APPLICATION SCENARIOS



Hotels



Industrial Parks



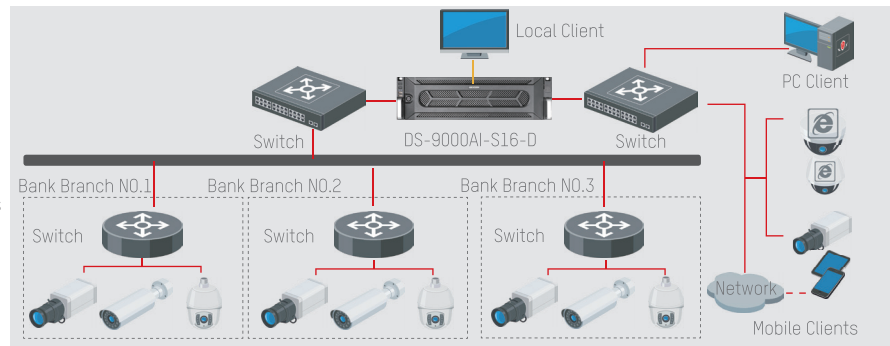
Shopping Malls

SERVER

Ideal for medium- to large-scale projects as a Server

Key Functions

- Installation of a third-party VMS
- Management of over 100 channels
- Onboard storage of up to 128 channels



APPLICATION SCENARIOS



Shopping Plazas



Hospitals



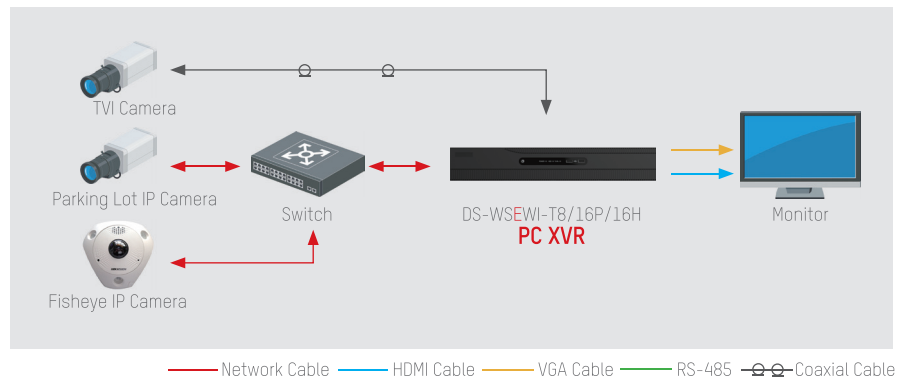
Banks

PC XVR

Ideal for small and medium hybrid surveillance projects as a PC XVR

Key Functions

- Hybrid surveillance solution
- Centralized management
- Video recording and decoding
- Installation of a third-party VMS



APPLICATION SCENARIOS



Retail Centres



Chain Restaurants



Museums



SPOTLIGHT PRODUCT SHOWCASE



DS-WSEWI-T2/4200



Designed for security system

- Pre-installed Windows 10 enterprise version
- Enterprise-SSD for fast boot and running



Advanced iVMS-4200



Preinstalled Hikvision iVMS-4200, overall management of video / access control / alarm / intercom, etc.






Improve decoding capability and 4K Output


- Max. 15-ch 1080p decoding performance
- Two 4K HDMI and One VGA interface to support independent video output


KEY PARAMETERS

Product	Eco Series 2 HDD	Eco Series 4 HDD
Front Panel		
Memory	Intel® Celeron® Processor J3455 (2M Cache, up to 2.3 GHz), 64-bit, 4 cores	
Processor	DDR3L, 4 GB	
Storage	Onboard 32 GB mSATA (for Linux), 64 GB mSATA optional; 64 GB mSATA SSD (for Windows), 128 GB mSATA optional	
	2 × SATA 2.0	4 × SATA 2.0
OS	Windows (Win 10 by default), Linux (Ubuntu Linux by default)	
Monitor Output	1 × VGA, 2 × HDMI (4K)	
NIC	Up to 2 Ethernet interfaces (10M/100M/1000M self-adaptive)	
PoE	Up to 16 RJ45 interfaces (10M/100M/1000M self-adaptive)	
USB	Front panel: 2 × USB 2.0, rear panel: 4 × USB 3.0	
Alarm I/O	4/2	16/4
Chassis	1U	1.5U

Product	Pro Series 2 HDD	Pro Series 4 HDD
Front Panel		
CPU Processor	Intel® Xeon® Processor i5-8500 (G4900/i3-8100/i7-8700/E2176)	
Memory	8 GB = 2 * 4 GB	
Storage	Standard 128 GB mSATA SSD (for Windows/Linux, 64 GB are optional)	
	2 × SATA 2.0	4 × SATA 2.0
OS	Windows (Win 10 by default), Linux (Ubuntu Linux by default)	
Monitor Output	1 × VGA, 2 × HDMI (4K)	
NIC	Up to 2 Ethernet interfaces (10M/100M/1000M self-adaptive)	
PoE	NA	
USB	Front panel: 2 × USB 2.0, rear panel: 4 × USB 3.0	
Alarm I/O	4/2	16/4
Chassis	1U	1.5U

Product	Pro Series 8 HDD
Front Panel	
Processor	Intel® Xeon® Processor E3-1225 v5, 3.30 GHz (G4400 3M Cache, 3.30 GHz, i3-6100 3M Cache, 3.70 GHz, i5-6500 6M Cache, 3.20 GHz or i7-6700 8M Cache, 3.40 GHz is optional)
Memory	8 GB = 2 × 4 GB (Optional G4400, i3, i5, i7 DIMM: Max. 2 × 8 GB DDR4 E3, DIMM: Max. 4 × 8 GB DDR4)
Storage	Standard 64 GB mSATA SSD (for Windows/Linux, 128 GB are optional)
	8 × SATA 2.0
OS	Windows (Win 10 by default), Linux (Ubuntu Linux by default, CentOS Linux)
Monitor Output	1 × VGA, 2 × HDMI (4K)
NIC	Up to 2 Ethernet interfaces (10M/100M/1000M self-adaptive)
PoE	NA
USB	Front panel: 2 × USB 2.0, rear panel: 4 × USB 3.0
Alarm I/O	None by default (optional 16/4)
Chassis	2U

Product		DS-9000AI-S16-D
Front Panel		
Server Board	Processor	Intel® Xeon® Processor, 14 nm, 4 cores, 64-bit CPU, E3-1225 v5, 3.3 GHz
	Memory	16 GB = 2 × 8 GB, 4 × DDR4 slots, ECC + UDIMM, up to 64 GB
	Storage	4 × 2.5-inch HDDs are connectable
	System Disk	Industrial-level SSD with 128 GB capacity. Pre-installed Ubuntu Linux (Win 7, Win 7E, Win 10, Windows Server 2008 R2, Windows Server 2012 R2 can be installed by customers)
	Monitor Output	1 × VGA, 2 × HDMI (4K)
	NIC	4 Ethernet interfaces (10M/100M/1000M self-adaptive)
Storage Board	Processor	Dual-Core Intel Processor
	Operation System	Embedded Linux
	Storage	16 × 3.5-inch HDD slots, hot swapping
	IPC Video Input	128-ch
	Monitor Output	1 × VGA, 2 × HDMI (dual-4K)
	RAID	RAID 0, RAID 1, RAID 5, RAID 6, RAID 10
	NIC	4 Ethernet interfaces (10M/100M/1000M self-adaptive)
	USB	Rear panel: 2 × USB 3.0
Chassis	3U	

Product	Eco Series 4 HDD Hybrid	Eco Series 8 HDD Hybrid
Front Panel		
CPU Processor	Intel® Celeron® Processor J3455 (2M Cache, up to 2.3 GHz), 64-bit, 4 cores	
Memory	DDR3L, 4 GB (8 GB optional)	
Storage	Onboard 32 GB eMMC (for Linux), 64, 128 GB optional; 64 GB mSATA SSD (for Windows), 128 GB optional	
	4 × SATA 2.0	8 × SATA 2.0
OS	Windows (Win 10 by default), Linux (Ubuntu by default)	
Monitor Output	1 × VGA, 2 × HDMI (4K)	
NIC	Up to 2 Ethernet interfaces (10M/100M/1000M self-adaptive)	
PoE	NA	Up to 16 RJ45 interfaces (10M/100M/1000M self-adaptive)
USB	Front panel: 2 × USB 2.0, Rear panel: 4 × USB 3.0	
Alarm I/O	16/4	
Monitor Output	1.5U	2U



SEEKING VMS PARTNERS FOR COLLABORATION HIKVISION WORKSTATION

Distributed by



HIKVISION®

Headquarters

No.555 Qianmo Road, Binjiang District,
Hangzhou 310051, China
T +86-571-8807-5998
overseasbusiness@hikvision.com

Hikvision USA
T +1-909-895-0400
sales.usa@hikvision.com

Hikvision Australia
T +61-2-8599-4233
salesau@hikvision.com

Hikvision India
T +91-22-28469900
sales@pramahikvision.com

Hikvision Canada
T +1-866-200-6690
sales.canada@hikvision.com

Hikvision Thailand
T +662-275-9949
sales.thailand@hikvision.com

Hikvision Germany
T +49-69-401507290
sales.adch@hikvision.com

Hikvision Europe
T +31-23-5542770
sales.eu@hikvision.com

Hikvision Italy
T +39-0438-6902
info.it@hikvision.com

Hikvision Brazil
T +55 11 3318-0050
Latam.support@hikvision.com

Hikvision Turkey
T +90 (216)521 7070- 7074
sales.tr@hikvision.com

Hikvision Malaysia
T +6-032-7224000
sales.my@hikvision.com

Hikvision Philippines
sales.ph@hikvision.com

Hikvision UK & Ireland
T +01628-902140
sales.uk@hikvision.com

Hikvision South Africa
Tel: +27 (10) 0351172
sale.africa@hikvision.com

Hikvision France
T +33(0)1-85-330-450
info.fr@hikvision.com

Hikvision Kazakhstan
T +7-727-9730667
nikia.panfilov@hikvision.ru

Hikvision Vietnam
T +84-974270888
sales.vt@hikvision.com

Hikvision UAE
T +971-4-4432090
salesme@hikvision.com

Hikvision Singapore
T +65-6684-4718
sg@hikvision.com

Hikvision Spain
T +34-91-737-16-55
info.es@hikvision.com

Hikvision Tashkent
T +99-87-1238-9438
uzb@hikvision.ru

Hikvision Hong Kong
T +852-2151-1761
info.hk@hikvision.com

Hikvision Russia
T +7-495-669-67-99
saleru@hikvision.com

Hikvision Korea
T +82-(0)31-731-8817
sales.korea@hikvision.com

Hikvision Poland
T +48-22-460-01-50
info.pl@hikvision.com

Hikvision Indonesia
T +62-21-2933759
Sales.Indonesia@hikvision.com

Hikvision Colombia
sales.colombia@hikvision.com

www.hikvision.com

Follow us on social media to get the latest product and solution information:



Hikvision



HikvisionHQ



HikvisionHQ



Hikvision_Global



hikvisionhq



Hikvision
Corporate Channel