

# EasyIP 4.0

JUST THE RIGHT INTELLIGENCE  
IN JUST THE RIGHT PLACES

EasyIP 4.0 SOLUTION

Video surveillance does not have to be complex. Technological advancements in every corner of our lives is becoming more and more simplified and user-friendly. And it's true in security, too.

What makes the best security system? The right components in the right places. And for the small to medium sized businesses with budget and time restrictions, Hikvision has got the right solution. The EasyIP 4.0 Solution.

For those who know the earlier EasyIP versions, this is the go-to, out-of-the-box system. With new and intelligent features, the EasyIP 4.0 Solution gets more done – and does it smarter.

The EasyIP 4.0 Solution from Hikvision is truly the easier way to better security. Keep reading to see all the benefits EasyIP 4.0 offers.



# EasyIP HISTORY

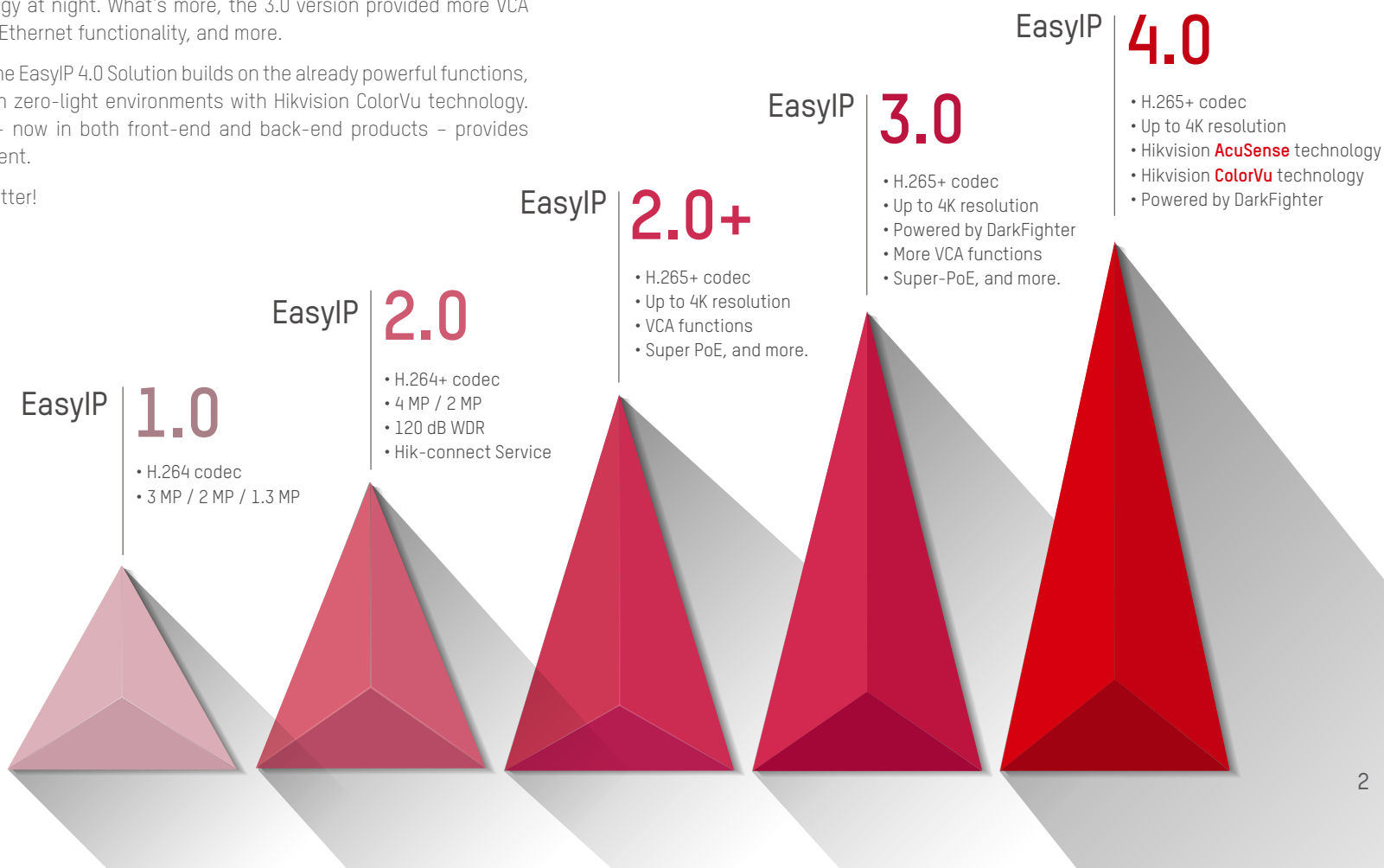
In 2012, Hikvision launched the first iteration of the EasyIP Solution, making a significant impact on the industry. EasyIP 1.0 employed the H.264 codec and offered 1.3, 2, and 3 MP cameras.

Hikvision responded to the increased demand for this renowned solution, applying more advanced technologies in 2014. The result was EasyIP 2.0, utilizing the H.264+ codec, and this time offering 2 and 4 MP cameras. More than that, the 2.0 version carried 120 dB Wide Dynamic Range cameras and Hik-connect Service, opening up new possibilities and extending system management.

In 2017, the EasyIP 3.0 Solution featured the H.265+ codec, maximizing resources and taking video surveillance resolution up to 4K! Sharp, vivid imaging during the day was complemented by powerful DarkFighter technology at night. What's more, the 3.0 version provided more VCA functions, extended power-over-Ethernet functionality, and more.

But Hikvision did not stop there. The EasyIP 4.0 Solution builds on the already powerful functions, now achieving colorful imaging in zero-light environments with Hikvision ColorVu technology. Hikvision AcuSense technology - now in both front-end and back-end products - provides more efficient security management.

The best SMB solution just got better!







## Hikvision AcuSense Technology

---

Based on deep learning algorithms, Hikvision AcuSense technology can now perform target classification. This technology immensely increases the alarm accuracy rate and brings a more convenient and effective way to search through video clips.



## Hikvision ColorVu Technology

---

With Hikvision ColorVu technology, zero-light environments are no longer a problem for security. Better lenses, more advanced sensors, and soft supplemental lighting come together to take image quality, even in total darkness, to a new level.

## OTHER FEATURES

- H.265+ codec
- Up to 4K resolution
- Powered by DarkFighter

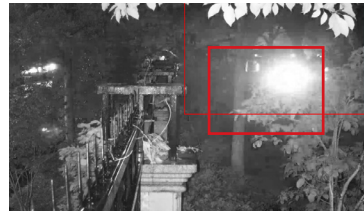
# HIKVISION AcuSense TECHNOLOGY

## False Alarms

People and vehicle intrusions are the most common concerns in perimeter protection. However, conventional security surveillance systems lack the ability to classify object types, resulting in endless false alarms.



Animals



Lights



Rain



Spiderwebs



Limbs or leaves

False alarms caused by different objects



### Unnecessary Information

Users receive too much irrelevant information



### Low Alarm Effectiveness

False alarms cause low alarm effectiveness



### High Labor Costs

Extra costs accrue when users have to double-check each alarm



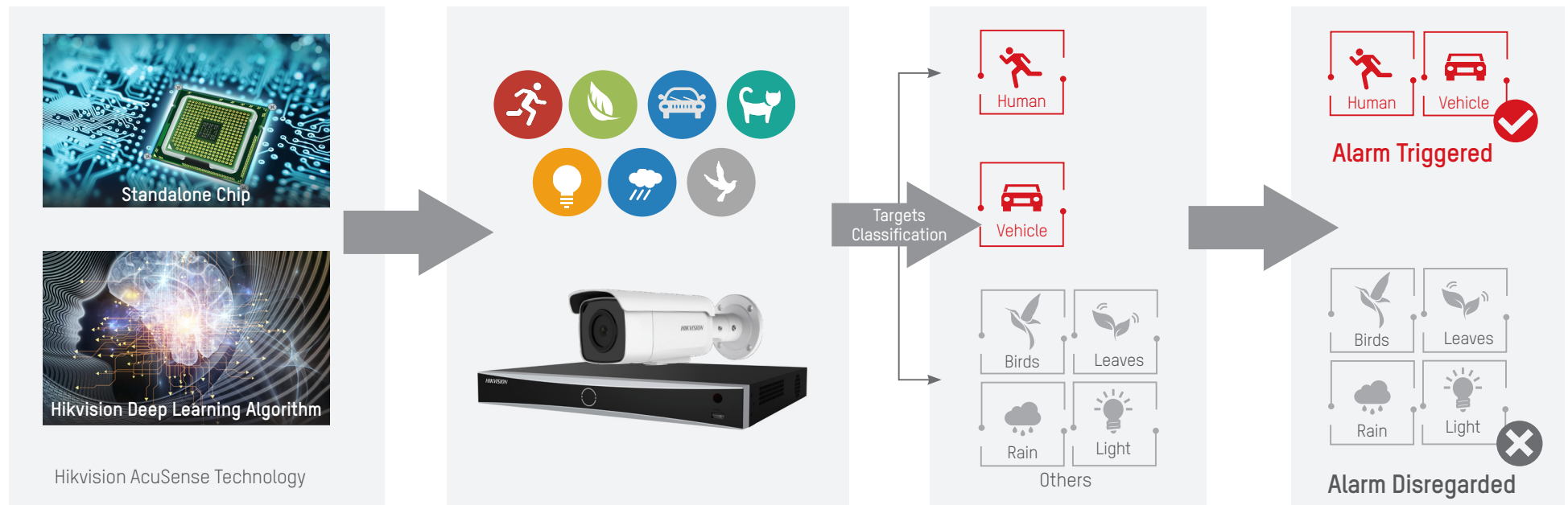
### Low User Satisfaction

Room to improve user experience with fewer false alarms remains

Problems associated with too many false alarms

## False Alarm Filter

Empowered by deep learning algorithms, Hikvision AcuSense technology brings target classification to both front-end and back-end devices. With precise target classification, the system can filter out up to 90% of the false alarm events, vastly improving alarm efficiency and effectiveness, as well as reducing labor costs.



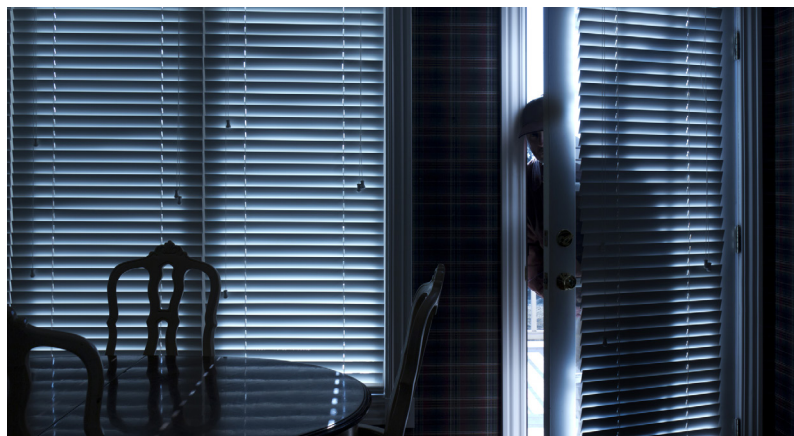
False alarm filtering based on target classification

### 3 Strobe Light and Audio Alarm



#### Ward off potential intruders by combining alarms with flashing light

IP cameras equipped with Hikvision AcuSense technology now have the ability to identify and classify objects into three categories: human, vehicle, and other. In perimeter protection, when cameras classify a moving object as human, they trigger an alarm and flashing light to ward off intruders.



#### Capture facial information of intruders

Cameras with strobe light and audio alarm provide better opportunities to capture facial information of intruders because people are inclined to turn to the source of sudden lights and sounds.

*\*Only select Hikvision AcuSense cameras support this function.*



## 4 Quick Target Search



### Before

#### Browse large amounts of files to find the one you need

Without quick target searches, finding video clips related to specific persons or vehicles is both time-consuming and unproductive.



### Now

#### More efficient and effective file searching using human and vehicle classification

Hikvision AcuSense Series NVRs can quickly retrieve all video clips with persons or vehicles from stored videos. Quick target search options can be found on local GUI for quick access to either human-related files or vehicle-related files.



## 5 Application Scenarios



Warehouses



Critical Infrastructure



Borders



Residential Areas



Parking Areas



Campuses

# HIKVISION ColorVu TECHNOLOGY

## Overcoming Obscurity to Capture Colors

Darkness provides cover for theft, trespassing, and other crimes. When incidents occur at night, conventional cameras without supplemental lighting miss or lose critical details.

Infrared LEDs do bring more details as lighting conditions at night challenge a video camera's capabilities. The trade-off for sharp imaging is, of course, turning images black and white.

Imagine capturing vivid, colorful details, in total darkness – such as on clothing or a car...

Hikvision ColorVu Technology is the answer.



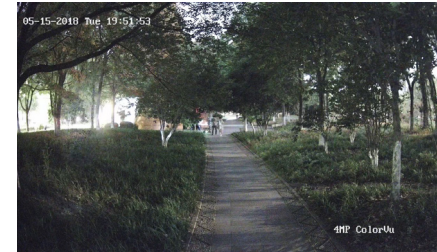
## ■ Overcoming Obscurity to Capture Colors



Conventional 4 MP Camera  
(IR LED off)



4 MP Powered-by-DarkFighter Camera  
(IR LED off)



4 MP Hikvision ColorVu Camera  
(Warm-light LED off)

Supplemental Light Off



Conventional 4 MP Camera  
(IR LED on)



4 MP Powered-by-DarkFighter Camera  
(IR LED on)



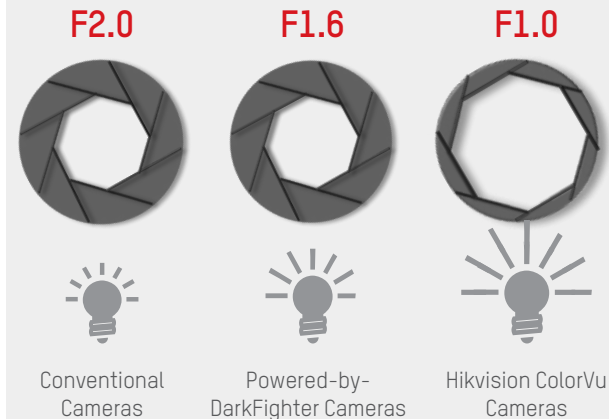
4 MP Hikvision ColorVu Camera  
(Warm-light LED on)

Supplemental Light On

## Bright and Colorful Imaging

### Large Apertures

F1.0 Super-aperture collects more light to produce brighter images

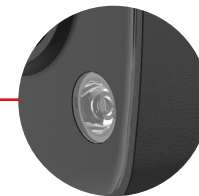


4X amount of light of conventional cameras, 2.56X amount of light of cameras powered by DarkFighter



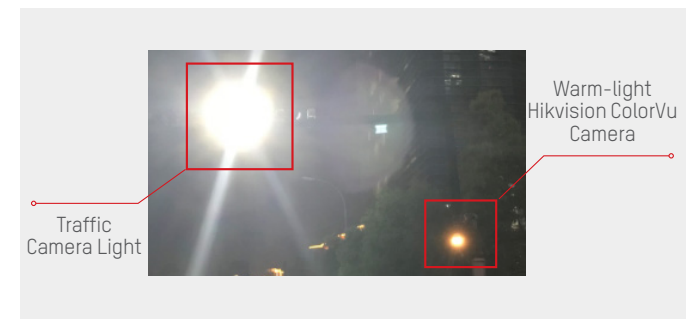
### Advanced Sensors

Improves the utilization of available light (4 MP 1/1.8" sensor)



### Non-Dazzling Lighting

Built-in, environmentally-friendly, soft and warm supplemental lighting works to guarantee colorful images, even in complete darkness. The luminance is adjustable on a scale of 0-100.





## PRODUCT SHOWCASE

### Hikvision AcuSense Cameras



**DS-2CD2146G0-I(S)**  
Network Dome  
Camera

- Powered by DarkFighter
- Powered by DeepLearning
- Up to 4MP resolution
- 2.8/4/6mm fixed lens, optional
- H.265+/H.265
- IP67, IK10
- 120dB WDR



**DS-2CD2126G0-I(S)**  
Network Dome  
Camera

- Powered by DarkFighter
- Powered by DeepLearning
- Up to 2MP resolution
- 2.8/4/6mm fixed lens, optional
- H.265+/H.265
- IP67, IK10
- 120dB WDR



**DS-2CD2386G0-I**  
Network Turret  
Camera

- Powered by DarkFighter
- Powered by DeepLearning
- Up to 8MP high resolution
- 2.8/4/6mm fixed lens, optional
- H.265+/H.265
- IP67
- 120dB WDR



**DS-2CD2346G0-I**  
Network Turret  
Camera

- Powered by DarkFighter
- Powered by DeepLearning
- Up to 4MP resolution
- 2.8/4/6mm fixed lens, optional
- H.265+/H.265
- IP67
- 120dB WDR



**DS-2CD2326G0-I**  
Network Turret  
Camera

- Powered by DarkFighter
- Powered by DeepLearning
- Up to 2MP resolution
- 2.8/4/6mm fixed lens, optional
- H.265+/H.265
- IP67
- 120dB WDR



**DS-2CD2T86G0-I**  
Network Bullet  
Camera

- Powered by DarkFighter
- Powered by DeepLearning
- Up to 8MP high resolution
- 2.8/4/6/8mm fixed lens, optional
- H.265+/H.265
- IP67
- 120dB WDR



**DS-2CD2T46G0-I**  
Network Bullet  
Camera

- Powered by DarkFighter
- Powered by DeepLearning
- Up to 4MP resolution
- 2.8/4/6/8mm fixed lens, optional
- H.265+/H.265
- IP67
- 120dB WDR



**DS-2CD2T26G0-I**  
Network Bullet  
Camera

- Powered by DarkFighter
- Powered by DeepLearning
- Up to 2MP resolution
- 2.8/4/6/8mm fixed lens, optional
- H.265+/H.265
- IP67
- 120dB WDR



**DS-2CD268660-IZ(S)**  
Network Bullet  
Camera

- Powered by DarkFighter
- Powered by DeepLearning
- Up to 8MP high resolution
- 2.8-12mm VF lens
- H.265+/H.265
- IP67, IK10
- 120dB WDR



**DS-2CD264660-IZ(S)**  
Network Bullet  
Camera

- Powered by DarkFighter
- Powered by DeepLearning
- Up to 4MP resolution
- 2.8-12mm VF lens
- H.265+/H.265
- IP67, IK10
- 120dB WDR



**DS-2CD262660-IZ(S)**  
Network Bullet  
Camera

- Powered by DarkFighter
- Powered by DeepLearning
- Up to 2MP resolution
- 2.8-12mm VF lens
- H.265+/H.265
- IP67, IK10
- 120dB WDR



**DS-2CD278660-IZ(S)**  
Network Dome  
Camera

- Powered by DarkFighter
- Powered by DeepLearning
- Up to 8MP high resolution
- 2.8-12mm VF lens
- H.265+/H.265
- IP67, IK10
- 120dB WDR



**DS-2CD274660-IZ(S)**  
Network Dome  
Camera

- Powered by DarkFighter
- Powered by DeepLearning
- Up to 4MP resolution
- 2.8-12mm VF lens
- H.265+/H.265
- IP67, IK10
- 120dB WDR



**DS-2CD272660-IZ(S)**  
Network Dome  
Camera

- Powered by DarkFighter
- Powered by DeepLearning
- Up to 2MP resolution
- 2.8-12mm VF lens
- H.265+/H.265
- IP67, IK10
- 120dB WDR

## PRODUCT SHOWCASE

### Hikvision AcuSense Cameras with Strobe Light and Audio Alarm



**DS-2CD2346G0-I/SL**  
Network Turret  
Camera

- Powered by DarkFighter
- Powered by DeepLearning
- Strobe light and audio alarm
- Up to 4MP resolution
- 2.8/4/6mm fixed lens, optional
- H.265+/H.265
- 120dB WDR



**DS-2CD2326G0-I/SL**  
Network Turret  
Camera

- Powered by DarkFighter
- Powered by DeepLearning
- Strobe light and audio alarm
- Up to 2MP resolution
- 2.8/4/6mm fixed lens, optional
- H.265+/H.265
- 120dB WDR



**DS-2CD2T46G0-I/SL**  
Network Bullet  
Camera

- Powered by DarkFighter
- Powered by DeepLearning
- Strobe light and audio alarm
- Up to 4MP resolution
- 2.8/4/6mm fixed lens, optional
- H.265+/H.265
- IP66
- 120dB WDR



**DS-2CD2T26G0-I/SL**  
Network Bullet  
Camera

- Powered by DarkFighter
- Powered by DeepLearning
- Strobe light and audio alarm
- Up to 2MP resolution
- 2.8/4/6mm fixed lens, optional
- H.265+/H.265
- IP66
- 120dB WDR

### Hikvision ColorVu Cameras



**DS-2CD2347G3E-L**  
Network Turret  
Camera

- ColorVu
- Up to 4MP resolution
- 4/6mm fixed lens, optional
- H.265+/H.265
- IP67
- 120dB WDR



**DS-2CD2327G3E-L**  
Network Turret  
Camera

- ColorVu
- Up to 2MP resolution
- 4/6mm fixed lens, optional
- H.265+/H.265
- IP67
- 120dB WDR



**DS-2CD2T47G3E-L**  
Network Bullet  
Camera

- ColorVu
- Up to 2MP resolution
- 4/6mm fixed lens, optional
- H.265+/H.265
- IP67
- 120dB WDR



**DS-2CD2T27G3E-L**  
Network Bullet  
Camera

- ColorVu
- Up to 2MP resolution
- 4/6mm fixed lens, optional
- H.265+/H.265
- IP67
- 120dB WDR

## Hikvision AcuSense NVRs

DS-7608NXI-I2(/8P)/4S  
2HDD NVR



- Up to 8-ch IP cameras for access.
- False alarm filtering for 4-ch behavior (line crossing and intrusion) detection for 2 MP, 3 MP, 4 MP and 8MP network camera
- Support quick target search
- H.265/H.265+/H.264/H.264+/MPEG4 supported decoding formats.
- 80 Mbps/256 Mbps for incoming/outgoing bandwidth
- 12-ch 1080p decoding
- 1 HDMI, 1 VGA and 1 CVBS output
- Optional 8 PoE ports, with /8P model
- 1U chassis

DS-7616NXI-I2(/16P)/4S  
2HDD NVR



- Up to 16-ch IP cameras for access.
- False alarm filtering for 4-ch behavior (line crossing and intrusion) detection for 2 MP, 3 MP, 4 MP and 8MP network camera
- Support quick target search
- H.265/H.265+/H.264/H.264+/MPEG4 supported decoding formats.
- 160 Mbps/256 Mbps for incoming/outgoing bandwidth
- 12-ch 1080p decoding
- 1 HDMI, 1 VGA and 1 CVBS output
- Optional 16 PoE ports, with /16P model
- 1U chassis

DS-7716NXI-I4(/16P)/4S  
4HDD NVR



- Up to 16-ch IP cameras for access.
- False alarm filtering for 4-ch behavior (line crossing and intrusion) detection for 2 MP, 3 MP, 4 MP and 8MP network camera
- Support quick target search
- H.265/H.265+/H.264/H.264+/MPEG4 supported decoding formats.
- 256 Mbps/200 Mbps for incoming/outgoing bandwidth
- 12-ch 1080p decoding
- 2 HDMI, 1 VGA and 1 CVBS output
- eSATA by default.
- Optional 16 PoE ports, with /16P model
- 1.5U chassis

DS-7732NXI-I4(/16P)/4S  
4HDD NVR



- Up to 32-ch IP cameras for access.
- False alarm filtering for 4-ch behavior (line crossing and intrusion) detection for 2 MP, 3 MP, 4 MP and 8MP network camera
- Support quick target search
- H.265/H.265+/H.264/H.264+/MPEG4 supported decoding formats.
- 256 Mbps/200 Mbps for incoming/outgoing bandwidth
- 12-ch 1080p decoding
- 2 HDMI, 1 VGA and 1 CVBS output
- Optional 16 PoE ports, with /16P model
- 1.5U chassis

## SYSTEM RECOMMENDATIONS

AcuSense Camera  
+  
AcuSense NVR



All-channel false alarm filter and quick target search

Conventional Camera  
+  
AcuSense NVR

False alarm filter and quick target search

AcuSense Camera  
+  
Conventional NVR






False alarm filter

ColorVu Camera  
+  
AcuSense NVR

24/7 colorful imaging, false alarm filter, and quick target search









## ACCESSORIES

				
DS-2CD26XXG1 DS-2CD2TXG1	DS-1260ZJ Junction box(only for model without -IZS)	DS-1280ZJ-S Junction box(water proof)	DS-1275ZJ-SUS Vertical pole mount	DS-1276ZJ-SUS Corner mount

									
DS-2CD2Tx763E	DS-1292ZJ Wall mount (Included in the package)	DS-1299ZJ Pendant Mount	DS-1269ZJ Pendant Mount	DS-1214ZJ-T Horizontal pole mount	DS-1275ZJ-SUS Vertical pole mount	DS-1276ZJ-SUS Corner mount	DS-1233ZJ Corner mount	DS-1232ZJ Cardan Joint	DS-1232ZJ-T Cardan Joint

					
DS-2CD27X6G0	DS-1471ZJ-155 Pendant Mount	DS-1473ZJ-155 Wall Mount	DS-1475ZJ-SUS Vertical pole mount	DS-1476ZJ-SUS Corner mount	DS-1279ZJ Extendable pole for Pendant mount

							
DS-2CD23XXG2 DS-2CD23XXG3	DS-1275ZJ-SUS Vertical pole mount	DS-1276ZJ-SUS Corner mount	DS-1273ZJ-130-TRL Wall mount	DS-1280ZJ-M Junction box	DS-1281ZJ-M Inclined ceiling mount	DS-1271ZJ-130-TRL Pendant mount	DS-1279ZJ Extendable pole for Pendant mount

										
DS-2CD21XXG1	DS-1271ZJ-110 Pendant mount	DS-1272ZJ-110 Wall mount	DS-1272ZJ-110B Wall mount	DS-1276ZJ-(SUS) Corner mount	DS-1280ZJ-DM18 Junction box	DS-1471ZJ-155 Pendant Mount	DS-1473ZJ-155 Wall Mount	DS-1475ZJ-SUS Vertical pole mount	DS-1476ZJ-SUS Corner mount	DS-1279ZJ Extendable pole for Pendant mount





JUST THE RIGHT INTELLIGENCE  
IN JUST THE RIGHT PLACES

EasyIP 4.0 SOLUTION

**Hikvision Headquarters**

No.555 Qianmo Road  
310052 Hangzhou  
China  
T +86 571 88075998  
sales@hikvision.com

**Hikvision Europe**

Dirk Storklaan 3  
2132 PX Hoofddorp  
The Netherlands  
T +31 23 5542770  
info.eu@hikvision.com

**Hikvision France**

6 rue Paul Cézanne,  
93360 Neuilly-Plaisance  
France  
T +33 (0)1 85330450  
info.fr@hikvision.com

**Hikvision Italy**

Via Abruzzo 12  
Z.I. San Giacomo  
31029 Vittorio Veneto TV  
Italy  
T +39 0438 6902  
info.it@hikvision.com

**Hikvision Poland**

The Park, Office Building A  
Krakowiaków 50  
02-255 Warsaw, Poland  
T +48 22 4600150  
info.pl@hikvision.com

**Hikvision Spain**

Calle de Almazara 9  
28760 Tres Cantos  
Madrid, Spain  
T +34 91 7371655  
info.es@hikvision.com

**Hikvision Czech**

BETA Building, Vyskocilova  
1481/4, Prague 4  
Czech Republic  
T +42 29 6182640  
info.cz@hikvision.com

**Hikvision Germany**

Flughafenstr. 21  
63263 Neu-Isenburg  
Zeppelinheim, Germany  
T +49 69 401507290  
sales.dach@hikvision.com