

**HIKVISION®**

# COMMERCIAL DISPLAY SOLUTIONS FOR ENTERPRISES 2023/2024

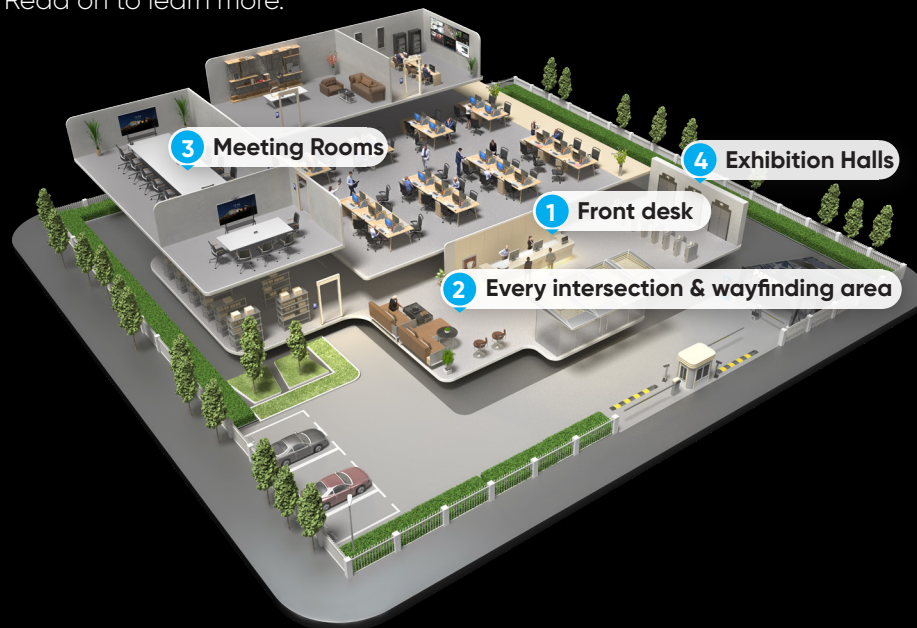


# COMMERCIAL DISPLAY SOLUTIONS FOR ENTERPRISES

Today, high-quality displays are an integral part of the modern working environment. Enterprises, customers, employees all require versatile displays to bridge each other with expanded collaboration and efficient communication, from enterprise image demonstrations to critical information sharing, and from fluid coloration to convenient management.

Hikvision's Commercial Displays provide tailored solutions that contribute to success for enterprises around the world. Lineups consist of various professional displays demonstrating brilliance, strength, and economy of design.

Read on to learn more.



# 01

## AN EXCELLENT IMPRESSION STARTS AT THE **FRONT DESK**

The front desk is where customers get their first impressions. A grand demonstration with clear, bright, and realistic backgrounds can help communicate the company's vision and philosophy more effectively.

### LED Video Wall

With completely seamless splicing and true-to-life visuals, Hikvision's LEDs are powerfully designed for large front desk displays in spacious halls, providing a captivating and stunning visual experience for various display size.

# 02 KEEP WELL-INFORMED IN EVERY INTERSECTION & WAYFINDING AREA

For some key entrances and intersections in the company buildings, an efficient information sharing system can conveniently boost internal communications and promotions, such as important notices, policies, and announcements.

Hikvision's LED poster displays and digital signage establish an effective internal messaging system with HikCentral FocSign, keeping pleasantly staff well-informed.



## LED Poster Display

- Built-in LED controller
- Information sharing system
- Flexible mounting
- Support up to 10 self-splicing units with only HDMI cables for an expansive view



## Digital Signage

- Floor-standing and wall-mounted models available
- Convenient central program design and sharing



## Central Management

With HikCentral FocSign, operators can easily access remote terminals from the control center to design and release programs to them, as well as remotely control devices.

# 03

## MAKE COLLABORATION EVER EASIER

### IN MEETING ROOMS

Meeting rooms create a collaborative environment where great ideas are discovered, nurtured, and discussed. Where creative imaginations get a space to come to life. Where exciting possibilities get sketched out on scratchpads. And today's technology has the media to help make it happen. To boost communication efficiency, Hikvision developed various commercial display packages for conference room scenarios, such as ample screen size and multi-screen wireless projection for efficient content sharing and discussion, smart interaction for more impressive presentations, and more.

#### Small Size Meeting Rooms

##### Interactive Flat Panel

Integrated design & flexible interaction

Conventional meeting rooms often require a projector and all the right cables, a whiteboard and writing utensils, and other items – and everything must be available and working properly when you need them.

But now, Hikvision Interactive Flat Panels provide the all-in-one solution to replace all of that. These panels support wireless projection, smart whiteboard, free annotation, remote meeting, scanning code sharing, and more, meeting every demand of a small size conference room.



##### Advanced Industrial Design

- 4K anti-glare, 0-gap bonding screen
- Anodizing, 150-mesh sandblasted metal frame
- Slim body with thinnest part only 22.8 mm
- Linear pen slot with magnetic holding points



##### Easy Projection

- Supports cable, Wi-Fi, and Airplay projection
- Supports simultaneous projection from 4 signal sources
- Supports HDMI loop out to establish simultaneous, multiple-IFP projection



##### Smart Whiteboard

- 45-point IR touch for multiple people drawing simultaneously
- Mohs level 7 hardness glass, resistant to fingerprints and scratches
- Supports inserting images, tables, flow charts, etc.



##### Remote Conferencing

With built-in 8 MP camera and 6-microphone array, users can hold remote conferences with ease

## Small Size Meeting Rooms LED All-in-one Display

Quick deployment with easy use

Hikvision's all-in-one LED displays offer ample screen sizes for small size conference-use, up to 162". Featuring built-in LED controller, information sharing system and wireless projection, users will enjoy pleasant viewing and convenient deployment at once, sharing multiple forms of content from a PC or mobile phone to the screen with ease for unlimited inspiration.



### Quick Deployment

With up to 162" screens, users will very quickly establish a versatile large size video wall with multiple functions.



### Wireless Projection

PCs & mobile phones can project to the display conveniently via Wi-Fi.

## Medium Size Meeting Rooms LED Video Wall

Sufficient view with excellent display effect

In medium-sized meeting rooms, immersive and sufficient viewing experiences are important. Hikvision's LEDs harness the power of various unique and superb technologies to help users to build up a hassle-free, large video wall, with the most vivid and realistic display performance, making presentations and sharing more fluid and immersive.



### True-to-life Display

- Unique PixMaster image enhancement technology.
- Up to 22-bit top gray level.
- Different display modes and color modes optional
- Minimum P0.9 pixel pitch available



### Friendly Experience

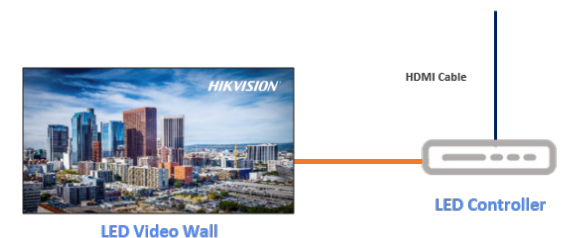
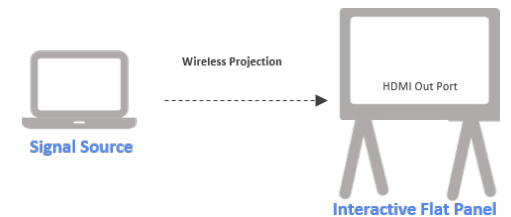
- Users can use remote adjust the screen's parameters conveniently.
- Hikvision LED can adjust brightness automatically according to ambient brightness.



## Large Size Meeting Rooms Dual-screen Interactive Solution

Spacious view with simultaneous interaction

In large conference rooms, convenient content annotation and interaction are always pain points for creators. Fortunately, Hikvision's fine pitch LEDs can create a spectacular picture with seamless splicing, tailor-made for spacious indoor displays. More importantly, the smart interaction also helps synchronize annotations for more effective presentations. Plus, our Blue Light Filtering also reduces eye strain during prolonged use.



# 04

## DEMONSTRATE YOUR STRENGTH SPLENDIDLY IN EXHIBITION HALLS

The exhibition hall is the ideal method to let customers and partners learn about a company's background and technical strengths. Hikvision's creative LEDs can help companies create a captivating exhibition hall to demonstrate their products and technologies vividly.



### Central Exhibition Rooms Curved and isolated LEDs

In a central exhibition room, an enormous screen is recommended to display the enterprise's ideas and concepts. Curved shapes are more suitable for large-scale views.



### Central Exhibition Rooms Naked-Eye 3D LED

The naked-eye 3D solution can achieve stereoscopic visual effects without the need for external tools such as polarized glasses. Using such technology, video walls can better attract customers' attention and hit commercial targets.

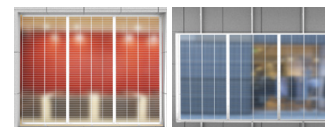
### Glass Wall Transparent LED

Glass walls can be built to delineate large areas, and transparent LED screens can be installed inside the walls. They can display video content while at the same time allowing the audience's sight to penetrate the screen, achieving a remarkable effect.



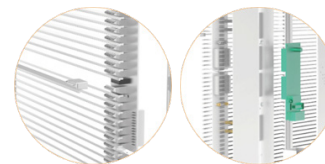
#### Translucent display

- LED lamps are installed on the light bars with ample space between, giving the screen a translucent appearance.



#### Easy installation

- The transparent LEDs can either be embedded into the window frame with better display quality, or fixed to the ceiling and floors with higher environmental adaptability.



#### Convenient maintenance

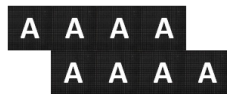
- Independent light bar and driver modules: The light bar and driver modules can be replaced to quickly solve problems.
- Quick connection: Quick connections for power and signal cables.



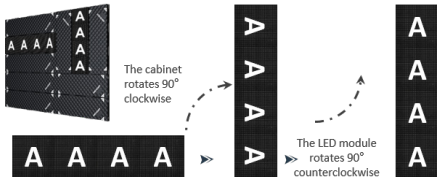


### Creative Splicing LEDs

LED screens are not restricted to rectangular shapes. The CGFx Series LEDs from Hikvision are compatible with dislocation splicing to create a unique screen shape.



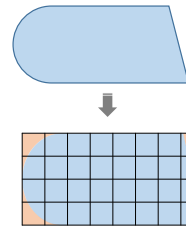
- Supports dislocation splicing with a unit of 250 mm to make creative shaped screens.



- The LED cabinet supports rotating 90° installation, and the LED module supports rotating 90° as well to ensure that the light emitting angle of the LED lamp remains consistent.
- Offer 5 product sizes, and the narrowest is 250mm wide and suitable for shop fronts. Those of the same pixel pitch but in different sizes support mixed splicing.

### Irregularly Shaped LED

By splicing an ordinary screen with baseline LED cabinets, and then covering a part of the area with decorative materials, users can realize various irregularly shaped screens.



#### LED Video Wall

Each cell represents an LED cabinet

#### Orange Zone

The area covered by decorative materials

#### Blue Zone

The actual displayed part



# COMMERCIAL DISPLAY SOLUTION KEY PRODUCTS

### Indoor Fixed LED

Model	DS-D4209CI-ZWDH(B)	DS-D4212FI-CWF	DS-D4226FI-CGFC
Image			
LED Lamp	P0.9 Flip-chip COB	P1.2 SMD LED	P2.6 SMD LED
Brightness	1,000 nits	800 nits	800 nits
Cabinet Size	600 x 337.5 mm	600 x 337.5 mm	1,000 x 250 mm

### Interactive Flat Panel

Model	DS-D5B75RB/C	DS-D5B86RB/D
Image		
Memory & Storage	4 GB + 64 GB	4 GB + 64 GB
Android Version	11.0	11.0
Built-in Microphone & Speaker	No	Yes

### LED Poster Display

Model	DS-D4212MI-070H(B)
Image	
Size	70"
Brightness	600 nits
Resolution	480 x 1,350

### LED All-in-one Display

Model	DS-D4215FI-135(B)
Image	
Pixel Pitch	1.5 mm
Size	135"
Resolution	1,920 x 1,080

### Digital Signage

Model	DS-D6043UN-B	DS-D6055UL-B/S	DS-D60C-B
Image			
Size	43"	55"	-
Brightness	500 nits	500 nits	-
Type	Wall-mounted	Floor-standing	Digital Signage Box

# Commercial Display Solutions

FOR ENTERPRISES

2023/2024



[www.hikvision.com](http://www.hikvision.com)  
[support@hikvision.com](mailto:support@hikvision.com)



**HIKVISION**