

MEDICAL
CARE



HEALTH

JOINT VALUE BROCHURE

CREATING SENIOR CARE NURSING
SOLUTIONS TOGETHER

A new solution that sends clearly articulated
notifications about the client's status to caregivers

About Kepler Night Nurse

Care providers receive hundreds of alarms during a shift. The overwhelming majority of the time, these alarms do not reflect what is going on, only which sensor triggered them. Meanwhile, when a client falls, they often lay on the floor for a long time without assistance. In some cases for many hours.

Kepler Night Nurse solves these problems. It recognizes falls within 60 seconds, and alarms and notifications identify and articulate exactly what is going on. The total amount of false alarms is reduced by 99%, freeing up care staff to focus on other tasks, and ensuring clients are not disturbed unnecessarily. The notifications are adjustable per client to allow for tailored care, and activity reports shows what happened in the room over time – allowing for better care in the long term.

Kepler Night Nurse frees caregivers as they no longer need to spend time on monitoring tasks. They can focus on providing actual care for their clients.



Technical Details

Solution Type Health Monitoring Platform
Human Activity Recognition

Integration Protocol HEOP, ISAPI

Product Languages English/Dutch

Regions Europe, North America

Integrated Hikvision Products

✓ Network camera, Fisheye camera

Supported Product Models and Versions

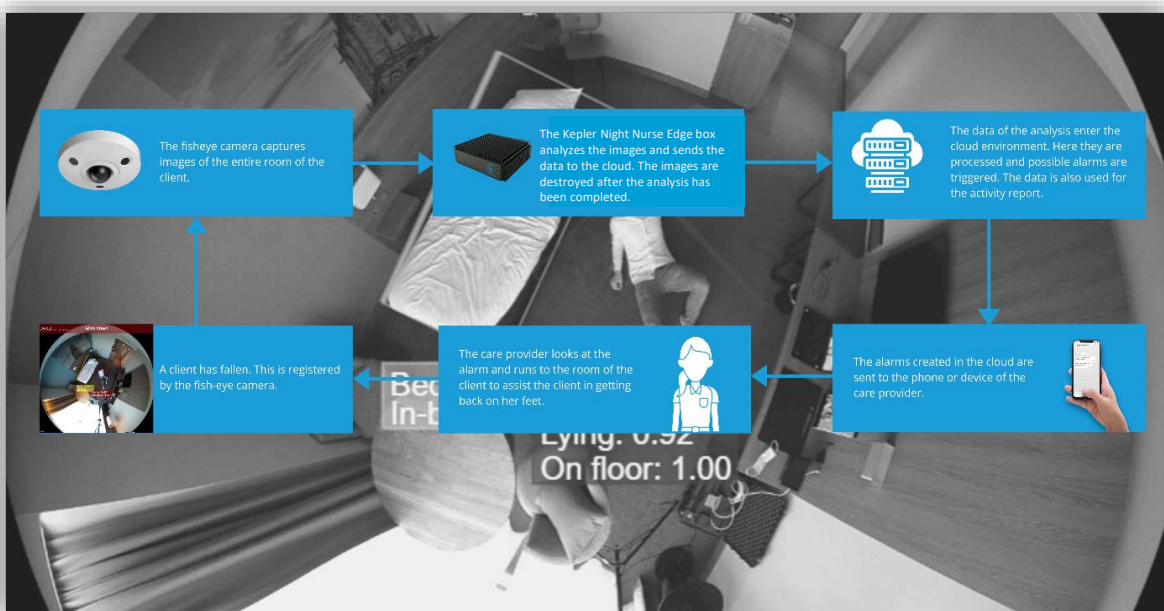
Fisheye 6MP model: Hikvision DS-2CD6362F-I;

Fisheye 12MP model: Hikvision DS-2CD63C560; iDS-2CD714660-IZS.

Firmware: IPCMF_H3_EN_STD_5.5.75 or later

Solution Architecture

An elderly person falls in the room. This is seen by the Hikvision fisheye camera, and the images are sent to the Edge Appliance. They are analyzed and text messages describing what happens in the image is sent to the cloud. Images with personal data are never saved. The data arriving in the cloud triggers alarms and creates the Activity Reports. The alarms are routed to the Nurse Call System which distributes them further to the right caregiver. The caregiver receives the message “man down in room 13” and rushes to that room to help.



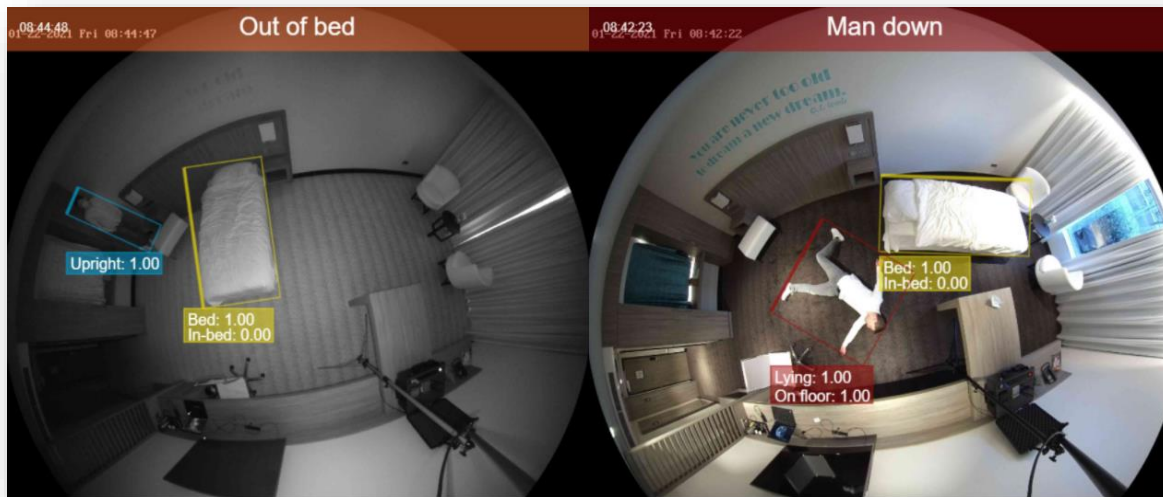
Key Benefits

Works 24/7 in all rooms

With a fisheye camera, the system can provide 24/7 continuous monitoring with a wide view angle of the whole room. Designed with independently adjustable IR lights, the camera can capture very clear and detailed images at night.

Gives immediate notification and help when fall occurs

In case an elderly person falls in the room, the Kepler Night Nurse registers a fall immediately. It makes sure a nurse is present and can pick the client up within 60 seconds in 6 out of 7 cases, providing help much faster.



Improves quality of elderly care

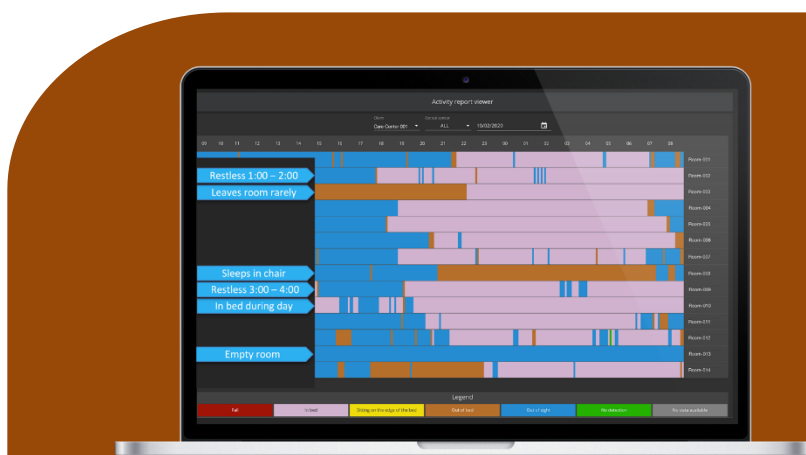
The system can achieve the health gains for the client and more job satisfaction for care providers:

- Care providers are present within 1 minute in the event of a fall.
- Insight provided into what is happening in the room.
- Adjustable alarms, and no more needless or false alarms.

99% reduction of false alarms

With Deep Learning technology and precise video analytics, the system can effectively remove false and unnecessary alarms, drastically reducing instances of "alarm fatigue" among caregivers.

This also ensures fewer care providers need to be deployed.



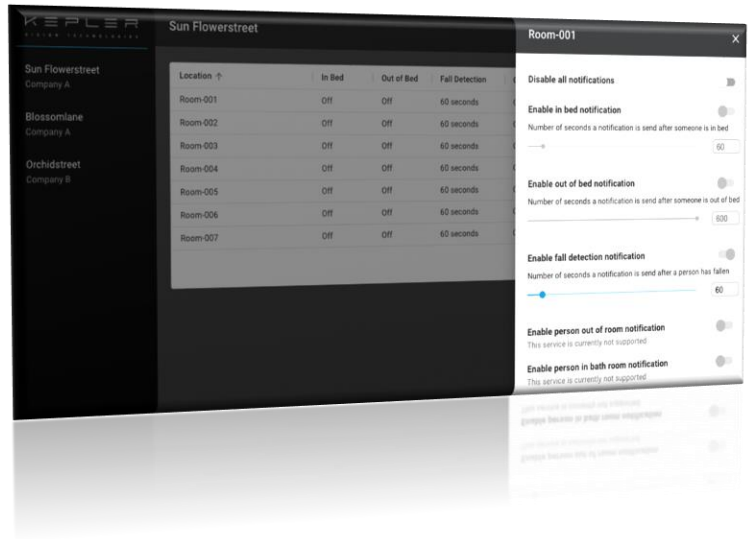
Kepler Vision

X

Hikvision

Provides overviews of client's health status

The Activity Report shows what the activity has been in a room and is updated once a day. It provides insights into the client's life rhythm and can be used by healthcare staff to see if the client's health is deteriorating.



Key Features



High-definition image with wide-angle view and detailed night vision



Falls recognized within 60 seconds



Adjustable fall-risk notifications



99% reduction of alarms. No vague or false alarms



Clear overview of room activity of the client

Targeted Industries (Verticals)



Residential



Healthcare

About Us

Hikvision Digital Technology

Hikvision is an IoT solution provider with video as its core competency. At Hikvision, we believe that it's the close collaboration with our ecosystem of partners that accelerates innovation and development, while also securing maximum value creation for clients.

We work closely with hundreds of the best manufacturers of technical hardware and software systems in the security, automated manufacturing, and IoT industries. Our Technology Partner Program demonstrates how clients can use Hikvision technologies with full confidence that we provide vendors the right tools for comprehensive integration and compatibility with all our products, empowering our joint-value solutions to address pain points in various industries.

Kepler Vision Technologies

Founded in 2018, Kepler Vision Technologies is a healthcare technology company that provides software for fall detection and fall prevention. Kepler Vision's core healthcare software is called the Kepler Night Nurse. Based on computer vision image analysis, alarms are sent to the alarm system of the healthcare institution whenever someone falls or needs help getting out of bed. The software can determine the activity of clients so that tailor-made care can be provided. The Kepler Night Nurse is a form of AI that analyzes images from optical sensors in healthcare. Fall detection is no longer a care provider's job.





Hikvision Europe

Dirk Storklaan 3, 2132 PX Hoofddorp,
The Netherlands
Email: tpp.eu@hikvision.com
T +31 23 5542770
tpp.hikvision.com

Kepler Vision Technologies

Deymanstraat 18F, 1091 SE Amsterdam,
The Netherlands
Email: info@keplervision.eu
T + +31 6 22 59 00 36
<https://keplervision.eu>