

<b>Title:</b>	How to configure Insite PCX UDL "Cloud" Connection	<b>Version:</b>	v1.0	<b>Date:</b>	03/01/2020
<b>Product:</b>	Pyronix Product			<b>Page:</b>	1 of 3

## Preparation

---

1. Pyronix Deltabell-X
2. Pyronix Panel
3. DS-19A series Network Security Control Panel or MBUS Security Control Panel


## How to Connect Pyronix Deltabell to Panel

---

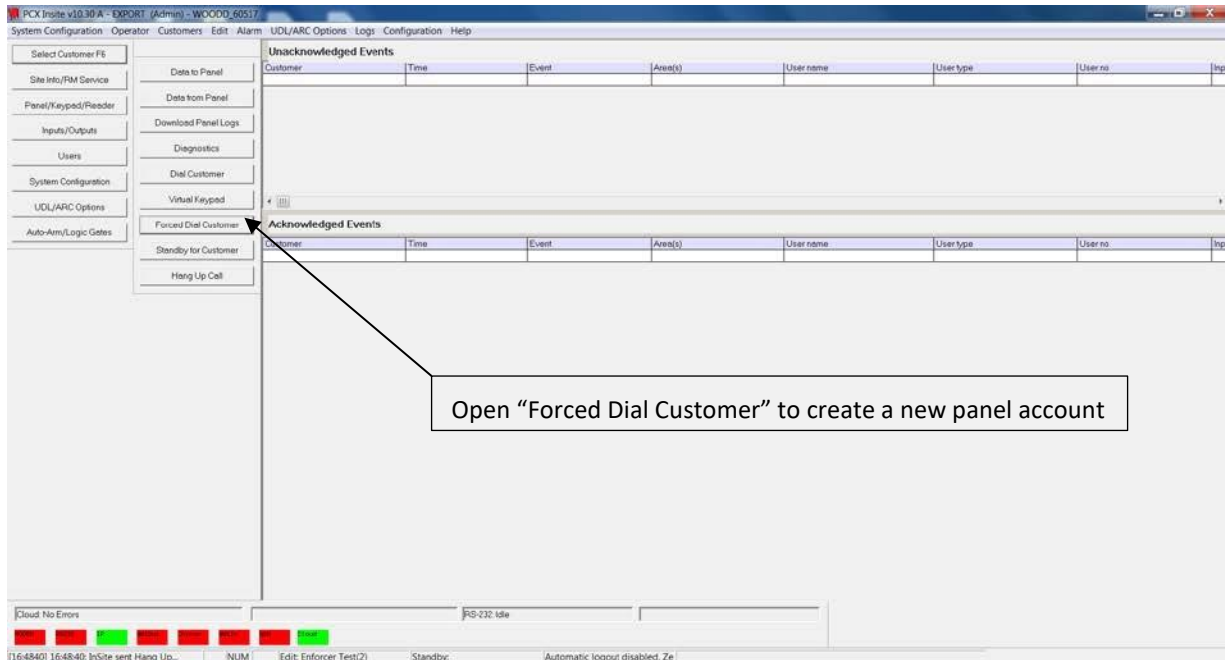
The Auto-Arm / Disarm feature can only be set up within the Insite software.

Provision is made to have Arm / Disarm periods for each day or for set Holidays so that a building can be automatically secured. To enable the Auto-Arm, select the "Add Action" tab and select the day(s). To each day adjust the 'Arm' and 'Disarm' times as required.

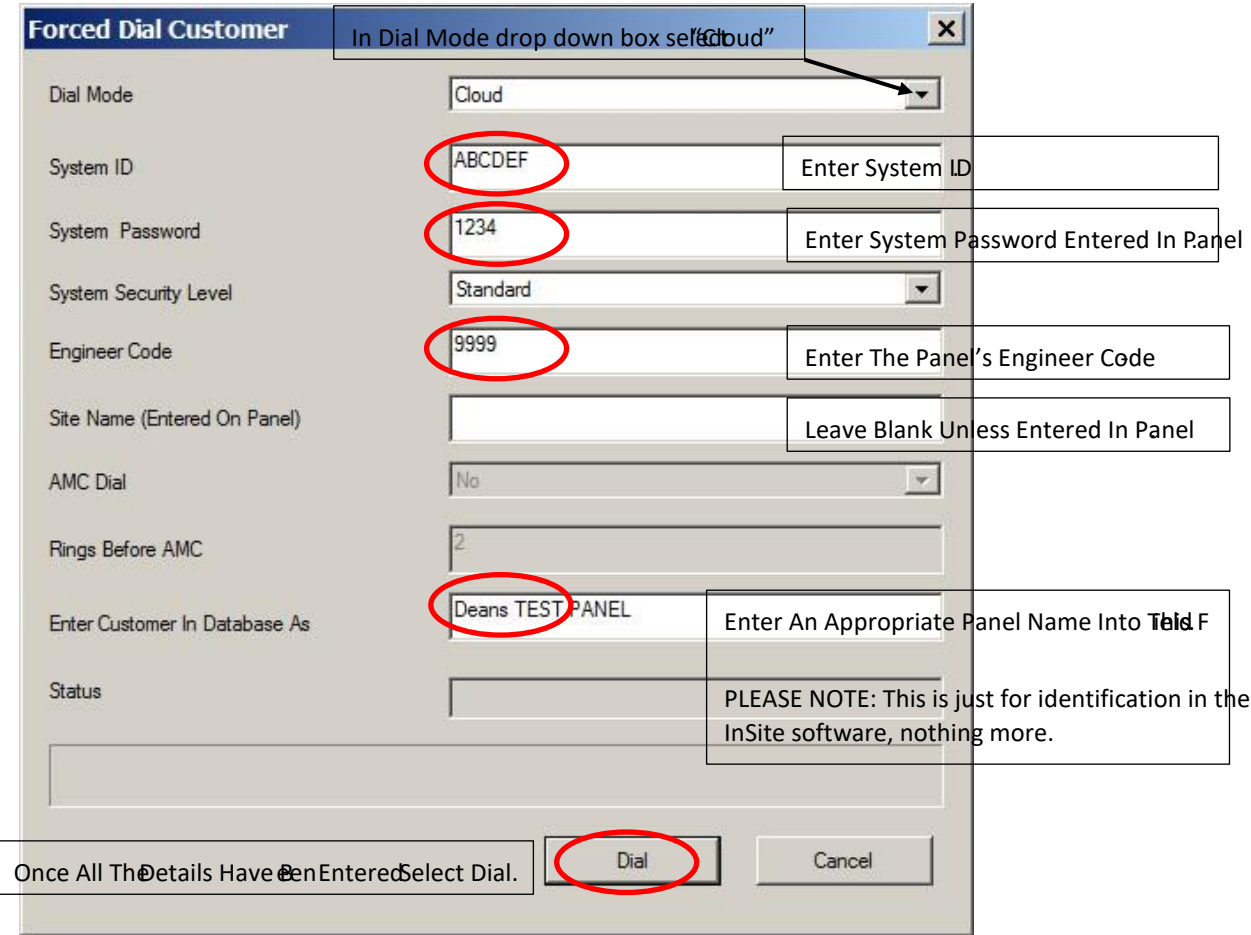
### 1. Within the Engineer Menu: Options UP/ Downloading

- "OPTIONS UP/ DOWNLOADING" In "Download by" check or change the connection path from RS232 to Cloud.
- Then scroll through the submenu and check or change the following parameters:-
- "System ID" – Take a note of the system ID. AAAAAAA ( Remember we do not use 1 or 0 )
- "Security" set to "Standard".
- "System Password" – **Must be Set** to allow Cloud UDL connection via the Insite UDL software. **Whatever** you input here **must be** set in the panel account details within Insite UDL software.
- "Poll server?" should be set to **"yes"**.
- "UDL password"... We recommend that this is not set for initial connections.
- "Site Name" ... We recommend that this is not set for initial connections. As with UDL password. If you do add it then it **must be** set up in the panel account within Insite UDL software.
- "UDL Priority" – Set to low.
- Select "A" To Exit Engineer **to save the changes**
- **IMPORTANT – Go back into the Engineer menu – "DIAGNOSTICS" – "Communications" – and press the  key twice – "App Status" It should state "Polling Cloud" It must state this before trying to connect with Insite** Open Insite UDL software.

<b>Title:</b>	How to configure Insite PCX UDL "Cloud" Connection	<b>Version:</b>	v1.0	<b>Date:</b>	03/01/2020
<b>Product:</b>	Pyronix Product			<b>Page:</b>	2 of 3



Open "Forced Dial Customer" to create a new panel account



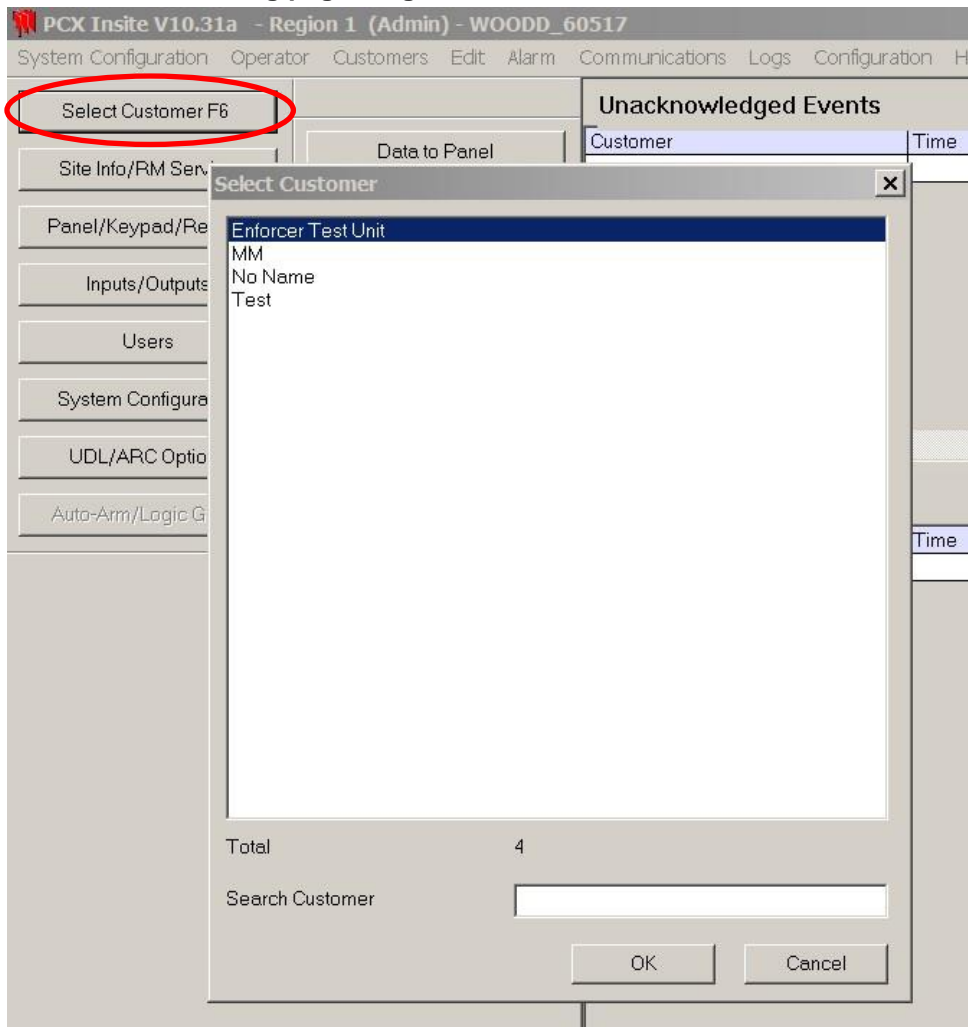
<b>Title:</b>	How to configure Insite PCX UDL “Cloud” Connection	<b>Version:</b>	v1.0	<b>Date:</b>	03/01/2020
<b>Product:</b>	Pyronix Product			<b>Page:</b>	3 of 3

The “Status” box will say connecting and a Blue status bar will gradually populate the area below it.

If connection is successful, the Cloud Icon will become blue, and a dialogue box will appear asking if you would like to create a customer – click ‘Yes’ to continue.

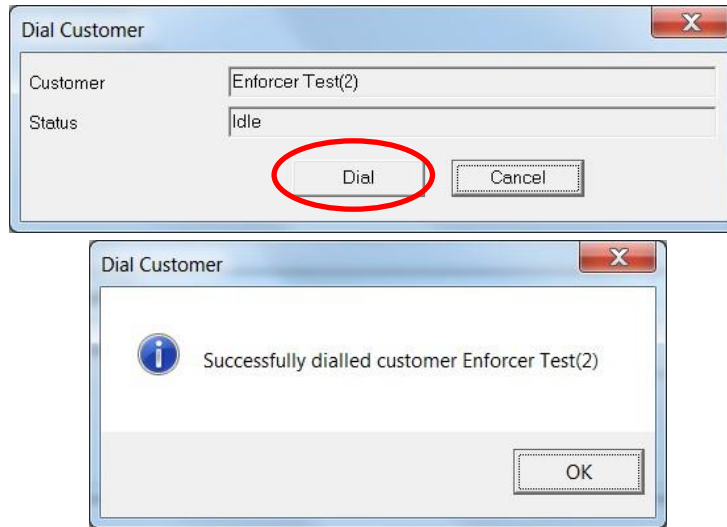
Once connected its good practice to save panel configuration and then upload changes where necessary.

- Select Tab “Hang Up Call” To Disconnect Panel.
- **To connect to the same account again simply select the Tab “Select Customer F6” - See Screenshots on the following page for guidance.**



•

<b>Title:</b>	How to configure Insite PCX UDL "Cloud" Connection	<b>Version:</b>	v1.0	<b>Date:</b>	03/01/2020
<b>Product:</b>	Pyronix Product			<b>Page:</b>	4 of 3



**First Choice for Security Professionals**  
**HIKVISION Technical Support**