

Title:	DS-PWA32 How to Reset Wireless Detector & Keyfob	Version:	v1.0	Date:	10/30/2018
Product:	AX Series Wireless Security Control Panel			Page:	1 of 4

Preparation

1. Wireless PIR Detector: DS-PD2-P10PW
2. Wireless Magnetic Contact: DS-PD1-MC-WWS
3. Wireless Keyfob: DS-19K00-Y

How to Reset Wireless Detector & Keyfob

1. Reset PIR Detector

- 1) Hold down **Learn Button** of Detector, and then **Put the battery**.



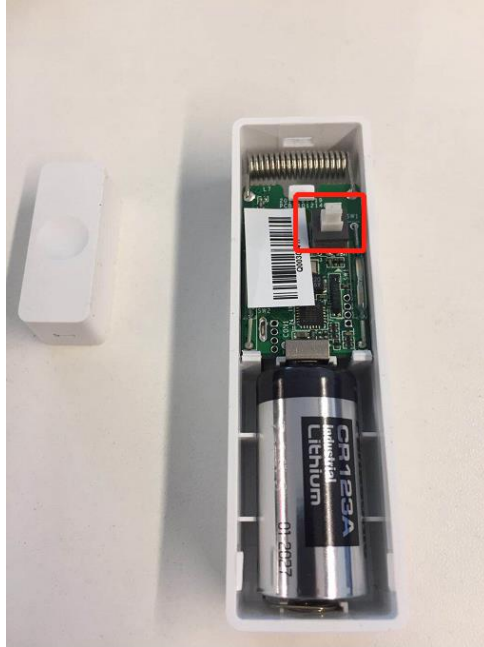
- 2) Hold down about 5 seconds, then release the button.
- 3) After release, you can see **Red** and **Green** light flash, means reset successfully



Title:	DS-PWA32 How to Reset Wireless Detector & Keyfob	Version:	v1.0	Date:	10/30/2018
Product:	AX Series Wireless Security Control Panel			Page:	2 of 4

2. Reset Wireless Magnetic Contact

- 1) Hold down **Tamper Button** of Wireless Magnetic Contact, and then **Put the battery**.



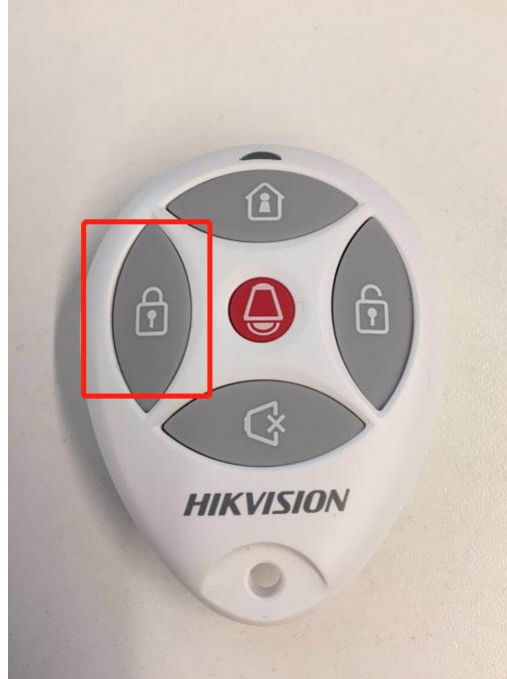
- 2) Hold down the button, after **Red** light flash 3 times, means reset successfully, as below.



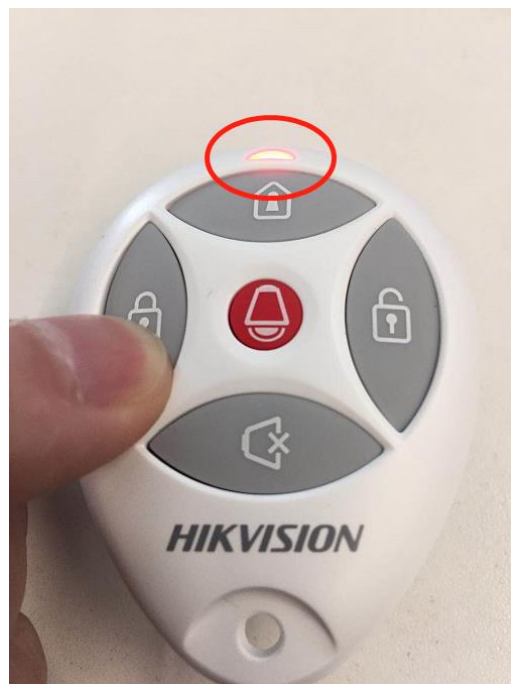
Title:	DS-PWA32 How to Reset Wireless Detector & Keyfob	Version:	v1.0	Date:	10/30/2018
Product:	AX Series Wireless Security Control Panel			Page:	3 of 4

3. Reset Wireless Keyfob

- 1) Hold down **Away Arming** of Wireless Keyfob, and then **Put the battery**.



- 2) Hold down the button, after **Red** light flash 3 times, means reset successfully, as below.





Title:	DS-PWA32 How to Reset Wireless Detector & Keyfob	Version:	v1.0	Date:	10/30/2018
Product:	AX Series Wireless Security Control Panel			Page:	4 of 4

First Choice for Security Professionals
HIKVISION Technical Support