

Title:	How to configure Zone Parameters	Version:	v1.0	Date:	10/11/2018
Product:	AX Series Wireless Security Control Panel			Page:	1 of 4

Preparation

1. AX Series Wireless Security Control Panel, V1.0.0 or above
2. Internet Explorer or iVMS-4200 (2.7.3.8)

How to configure Zone Parameters

You can set the zone parameters on the zone page.


1. Put sim card into the card slot

- 1) Click Wireless Device → Zone to enter the Zone page.

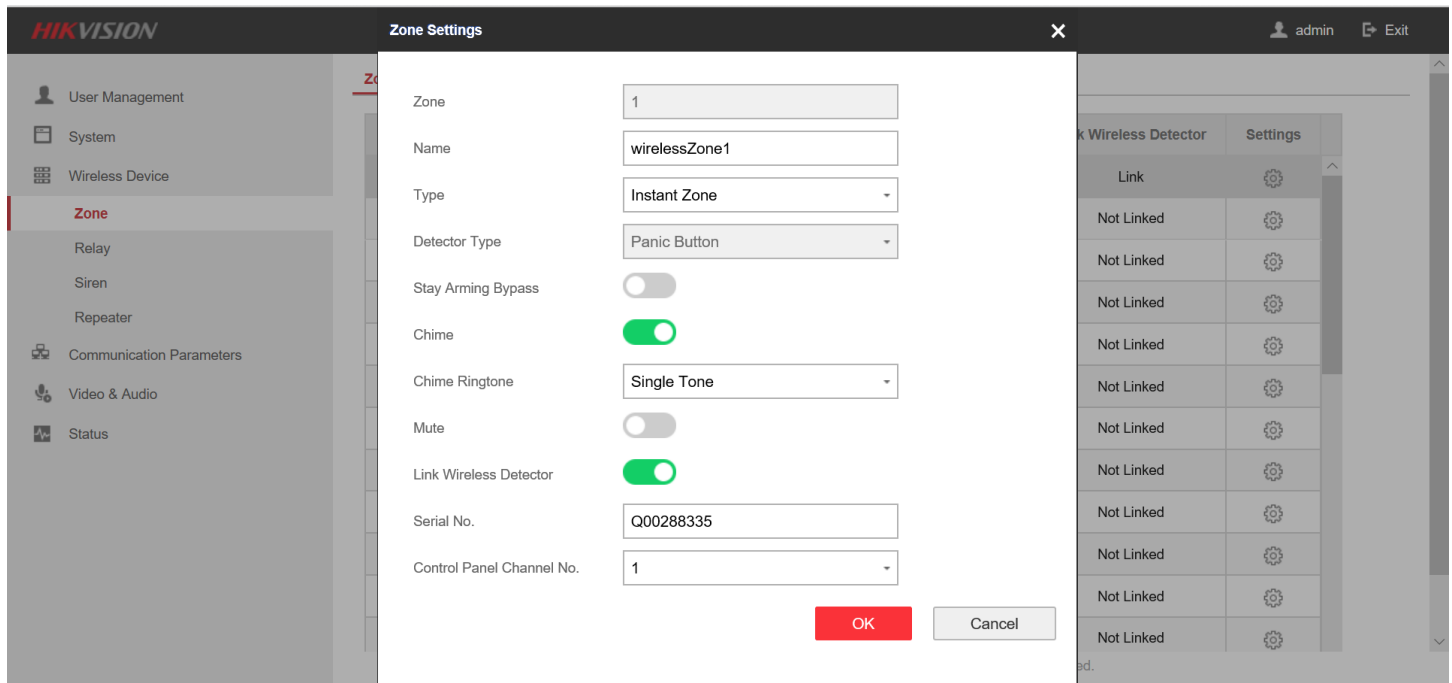
The screenshot shows the Hikvision Zone Management interface. The left sidebar contains a menu with the following items: User Management, System, Wireless Device, Zone (highlighted in red), Relay, Siren, Repeater, Communication Parameters, Video & Audio, and Status. A red arrow points to the 'Zone' menu item. The main content area displays a table with the following columns: Zone, Name, Type, Stay Arming Bypass, Mute, Chime, Link Wireless Detector, and Settings. The table contains 12 rows of data, each with a gear icon in the Settings column.

Zone	Name	Type	Stay Arming Bypass	Mute	Chime	Link Wireless Detector	Settings
1	wirelessZone1	Instant Zone	Disable	Disable	Disable	Link	⚙️
2	wirelessZone2	Instant Zone	Disable	Disable	Disable	Not Linked	⚙️
3	wirelessZone3	Instant Zone	Disable	Disable	Disable	Not Linked	⚙️
4	wirelessZone4	Instant Zone	Disable	Disable	Disable	Not Linked	⚙️
5	wirelessZone5	Instant Zone	Disable	Disable	Disable	Not Linked	⚙️
6	wirelessZone6	Instant Zone	Disable	Disable	Disable	Not Linked	⚙️
7	wirelessZone7	Instant Zone	Disable	Disable	Disable	Not Linked	⚙️
8	wirelessZone8	Instant Zone	Disable	Disable	Disable	Not Linked	⚙️
9	wirelessZone9	Instant Zone	Disable	Disable	Disable	Not Linked	⚙️
10	wirelessZone10	Instant Zone	Disable	Disable	Disable	Not Linked	⚙️
11	wirelessZone11	Instant Zone	Disable	Disable	Disable	Not Linked	⚙️
12	wirelessZone12	Instant Zone	Disable	Disable	Disable	Not Linked	⚙️

©2018 Hikvision Digital Technology Co., Ltd. All Rights Reserved.

- 2) Select a zone and click  to enter the Zone Settings page.
- 3) Edit the zone name.
- 4) Select a zone type.

Title:	How to configure Zone Parameters	Version:	v1.0	Date:	10/11/2018
Product:	AX Series Wireless Security Control Panel			Page:	2 of 4



Instant Zone

The system will immediately trigger an alarm when it detects triggering event after system armed. Detectors can be set as this type, which can be used in places such as supermarket.

Delayed Zone

Exit Delay: Exit Delay provides you time to leave through the defense area without alarm.

Entry Delay: Entry Delay provides you time to enter the defense area to disarm the system without alarm.

The system gives Entry/Exit delay time when it is armed or reentered. It is usually used in entrance/exit route (e.g. front door/main entrance), which is a key route to arm/disarm via operating keyboard for users.

Note

You can set the delayed time duration in **System** → **Schedule & Timer**.

Follow Zone

The zone acts as delayed zone when it detects triggering event during system Entry Delay, while it acts as instant zone otherwise. It is usually set in the living room or hall with perimeter delayed zones at the same time.

Perimeter Zone

The system will immediately alarm when it detects triggering event after system armed. There is

Title:	How to configure Zone Parameters	Version:	v1.0	Date:	10/11/2018
Product:	AX Series Wireless Security Control Panel			Page:	3 of 4

a configurable interval between alarm and siren output, which allows you to check the alarm and cancel the siren output during the interval time in case of false alarm. It is usually used in the perimeter area, such as doors and windows.

When the zone is armed, you can set the peripheral alarm delayed time in System → Schedule & Timer . You can also mute the siren in the delayed time.

24H Silent Zone

The zone activates all the time without any sound/siren output when alarm occurs. It is usually used in the sites equipped with panic button (e.g., bank, jewelry store).

Panic Zone

The zone activates all the time. It is usually used in the sites equipped with panic button, smoke detector and glass-break detector.

Fire Zone

The zone activates all the time with sound/siren output when alarm occurs. It is usually used in fire hazardous areas equipped with smoke detectors and temperature sensors.

Combustible Gas Zone

The zone activates all the time with sound/siren output when alarm occurs. It is usually used in areas equipped with gas detectors (e.g., the kitchen).

Medical Zone

The zone activates all the time, panel have beep voice when upload alarm report to center successfully. It is usually used in places equipped with medical emergency buttons.

Timeout Zone

The zone activates all the time. It alarms when the event you defined does happen throughout a configurable period. It is usually used in places equipped with magnetic contacts (e.g., fire hydrant box's door).

Shield Zone

Alarms will not be activated when the zone is triggered or tampered. It is usually used to disable faulty detectors.

- 5) Enable **Stay Arming Bypass**, **Doorbell**, or **Mute** according to your actual needs.

Note

You can set the delayed time duration in **System → Schedule & Timer**.

- 6) Enable Link **Wireless Detector**, input the serial No., and set the linked camera No.

- 7) Click OK.

Note

After setting the zone, you can enter **Status → Zone** to view the zone status



Title:	How to configure Zone Parameters	Version:	v1.0	Date:	10/11/2018
Product:	AX Series Wireless Security Control Panel			Page:	4 of 4

First Choice for Security Professionals
HIKVISION Technical Support