

<b>Title:</b>	DS-19A How to Configure Hybrid Security Control Panel in HikCentral	<b>Version:</b>	v1.0	<b>Date:</b>	04/16/2019
<b>Product:</b>	DS-19A Series Network Security Control Panel			<b>Page:</b>	1 of 11

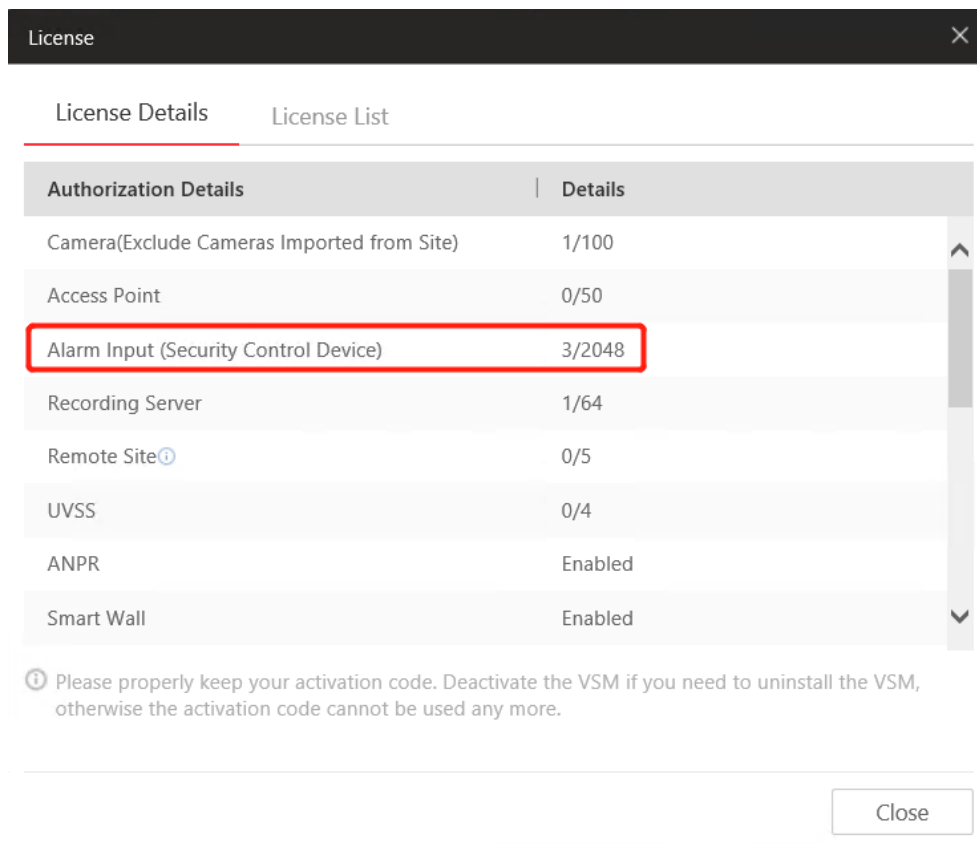
## Preparation

1. DS-19A08-01BNG Security Control Panel
2. HikCentral V1.4.0

## How to Configure Hybrid Security Control Panel in HikCentral

When you want pop-up windows in HikCentral Client, you need configure something by HikCentral website and Client..

1. Check the **license** for **Alarm input number** and **Alarm module**.



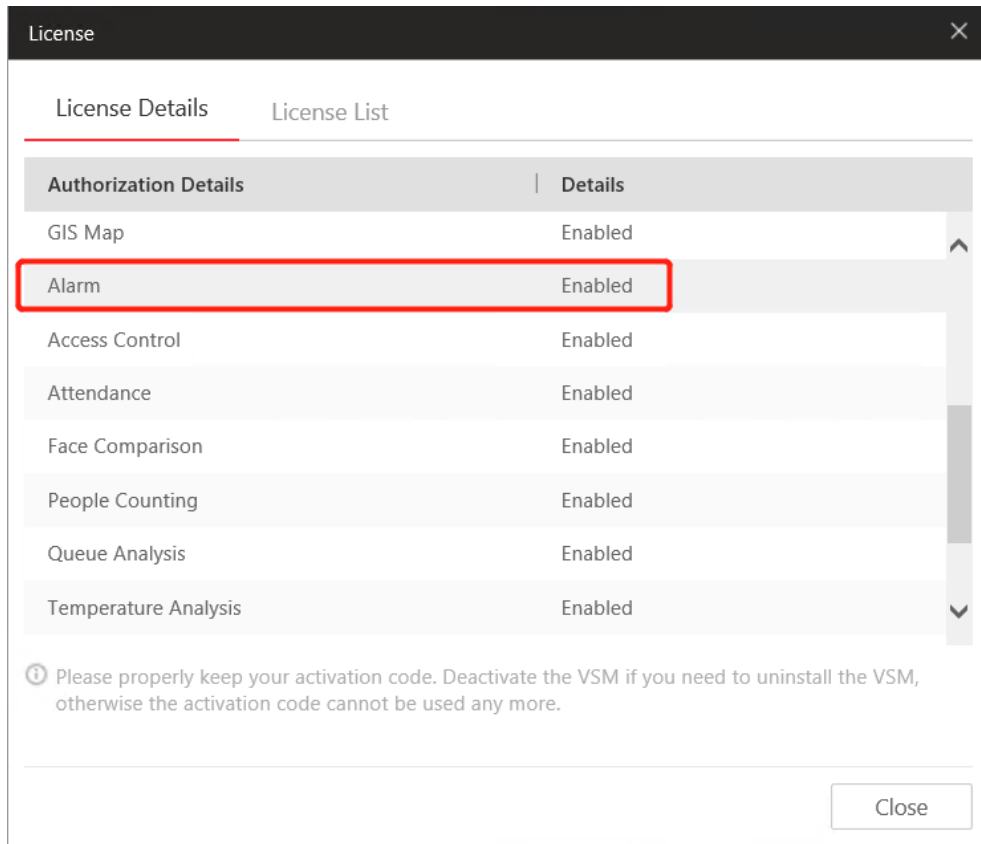
The screenshot shows a 'License' window with two tabs: 'License Details' (selected) and 'License List'. Under 'License Details', there is a table with two columns: 'Authorization Details' and 'Details'. The table lists various device types and their respective counts. The 'Alarm Input (Security Control Device)' row is highlighted with a red border, showing a count of 3/2048. Below the table, there is a note about activation codes and a 'Close' button.

Authorization Details	Details
Camera(Exclude Cameras Imported from Site)	1/100
Access Point	0/50
<b>Alarm Input (Security Control Device)</b>	<b>3/2048</b>
Recording Server	1/64
Remote Site ⓘ	0/5
UVSS	0/4
ANPR	Enabled
Smart Wall	Enabled

ⓘ Please properly keep your activation code. Deactivate the VSM if you need to uninstall the VSM, otherwise the activation code cannot be used any more.

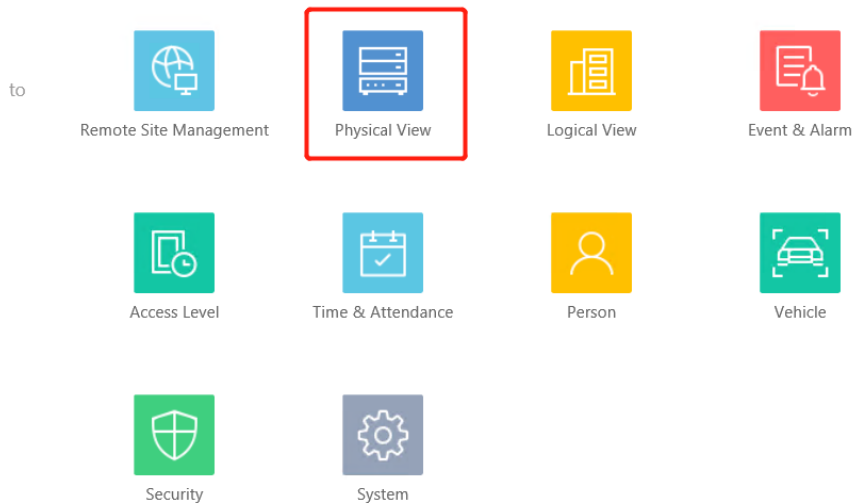
Close

<b>Title:</b>	DS-19A How to Configure Hybrid Security Control Panel in HikCentral	<b>Version:</b>	v1.0	<b>Date:</b>	04/16/2019
<b>Product:</b>	DS-19A Series Network Security Control Panel			<b>Page:</b>	2 of 11



## 2. Add DS-19A08-01BNG Hybrid Security Control Panel to HikCentral.

### 1. Choose Physical View



<b>Title:</b>	DS-19A How to Configure Hybrid Security Control Panel in HikCentral	<b>Version:</b>	v1.0	<b>Date:</b>	04/16/2019
<b>Product:</b>	DS-19A Series Network Security Control Panel			<b>Page:</b>	3 of 11

## 2. Choose Security Control Device, add device IP to HikCentral

**HikCentral Professional Web Client**

← **Add Security Control Device**

**Basic Information**

\* Adding Mode  IP Address  
 Hik-Connect  
 IP Segment  
 Port Segment  
 Batch Import

\* Device Address  ✓ 1

\* Device Port  ✓

\* Alias  ✓ 2

\* User Name  ✓

\* Password  ✓ 3  
Strong

**Time Zone**

Time Zone of Device  View

Add Add and Continue Cancel

## 3. Configure Map.

1. Choose Logical View.
2. Choose Alarm Inputs.
3. Click Wireless zone 1\_Hub, and add the Alarm in point to map.

<b>Title:</b>	DS-19A How to Configure Hybrid Security Control Panel in HikCentral	<b>Version:</b>	v1.0	<b>Date:</b>	04/16/2019
<b>Product:</b>	DS-19A Series Network Security Control Panel			<b>Page:</b>	4 of 11

**HikCentral Professional Web Client**

Hybrid Security Control Panel

Entry... (0) | Mult... (0) | Anti... (0) | Secu... (1)

Cameras Access Points **Alarm Inputs** Alarm Outputs >>

Area Name

10.9.64.111  
5015G  
605  
2604  
alarm test  
ANPR CAMERA  
DeepinMind  
DeepinView  
face  
Fisheye II  
hub  
Hub  
Hub test  
**Hybrid Security Control Panel**  
NVR

Name	Device	Area	Added to Map
Alarmin 1_Hybr...	Hybrid Security Co...	Hybrid Security Co...	No
Alarmin 2_Hybr...	Hybrid Security Co...	Hybrid Security Co...	No
Alarmin 3_Hybr...	Hybrid Security Co...	Hybrid Security Co...	No
Alarmin 4_Hybr...	Hybrid Security Co...	Hybrid Security Co...	No
Alarmin 5_Hybr...	Hybrid Security Co...	Hybrid Security Co...	No
Alarmin 6_Hybr...	Hybrid Security Co...	Hybrid Security Co...	No
Alarmin 7_Hybr...	Hybrid Security Co...	Hybrid Security Co...	No
Alarmin 8_Hybr...	Hybrid Security Co...	Hybrid Security Co...	No
Alarmin 10_Hy...	Hybrid Security Co...	Hybrid Security Co...	No
Alarmin 9_Hybr...	Hybrid Security Co...	Hybrid Security Co...	No
Alarmin 11_Hy...	Hybrid Security Co...	Hybrid Security Co...	No
Alarmin 12_Hy...	Hybrid Security Co...	Hybrid Security Co...	No

Total 256 Record(s) 100 1 / 3 Go

**HikCentral Professional Web Client**

Alarmin 1\_Hybrid Security...

Event Settings

No available event information found for the resource.

Configuration

Map Settings

Add to Map  1

GPS Location China, Hangzhou Shi, Binjiang Qu, 西兴

Icon Style  Add New

Name Color

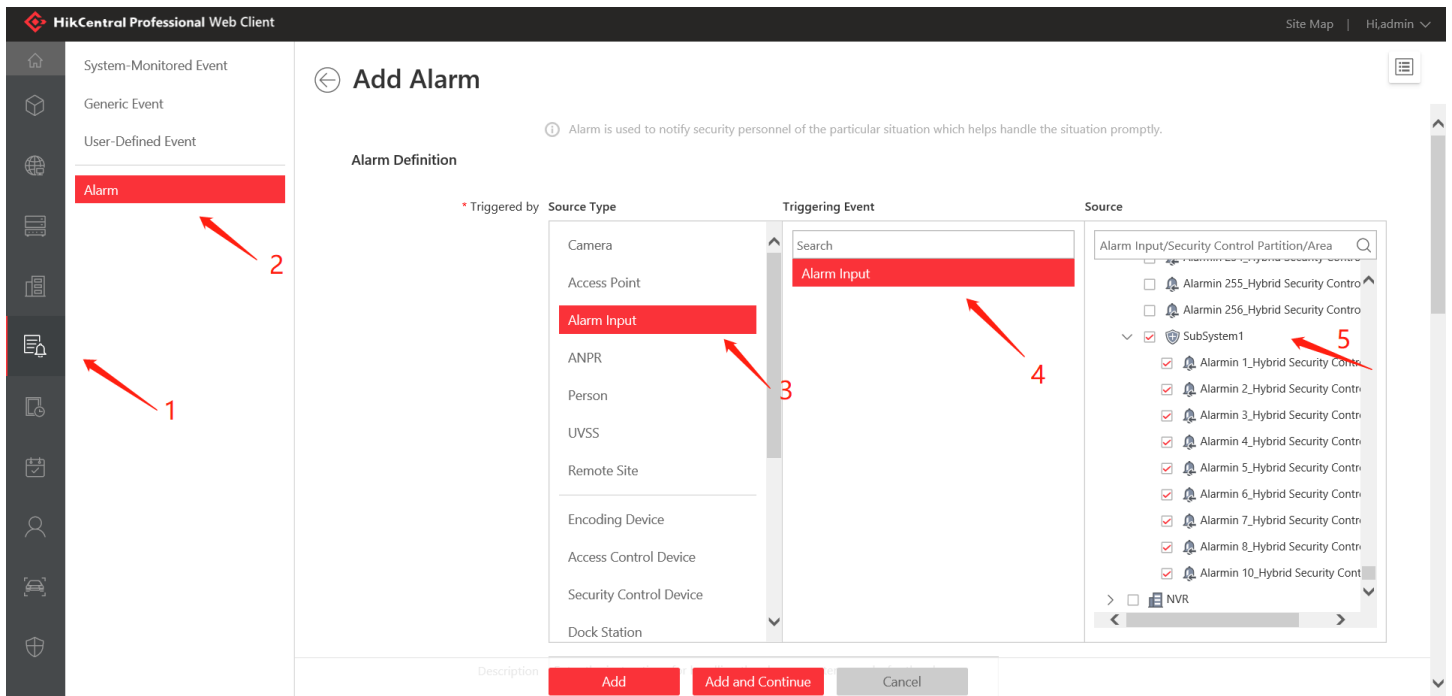
Remark

2 Save Cancel

<b>Title:</b>	DS-19A How to Configure Hybrid Security Control Panel in HikCentral	<b>Version:</b>	v1.0	<b>Date:</b>	04/16/2019
<b>Product:</b>	DS-19A Series Network Security Control Panel			<b>Page:</b>	5 of 11

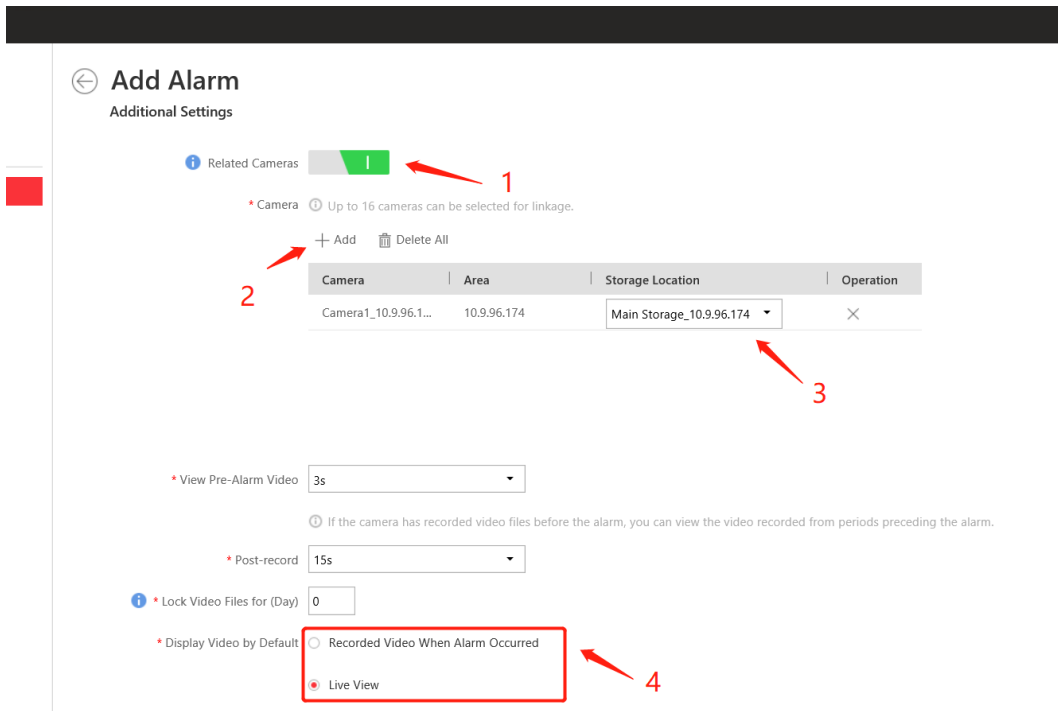
## 4. Configure Event and Alarm (Pop-Up) .

1. Choose Event & Alarm.
2. Choose Alarm, Click +Add.
3. Choose **Alarm Input**----**Alarm Input**----**Device**----**SubSystem1**.



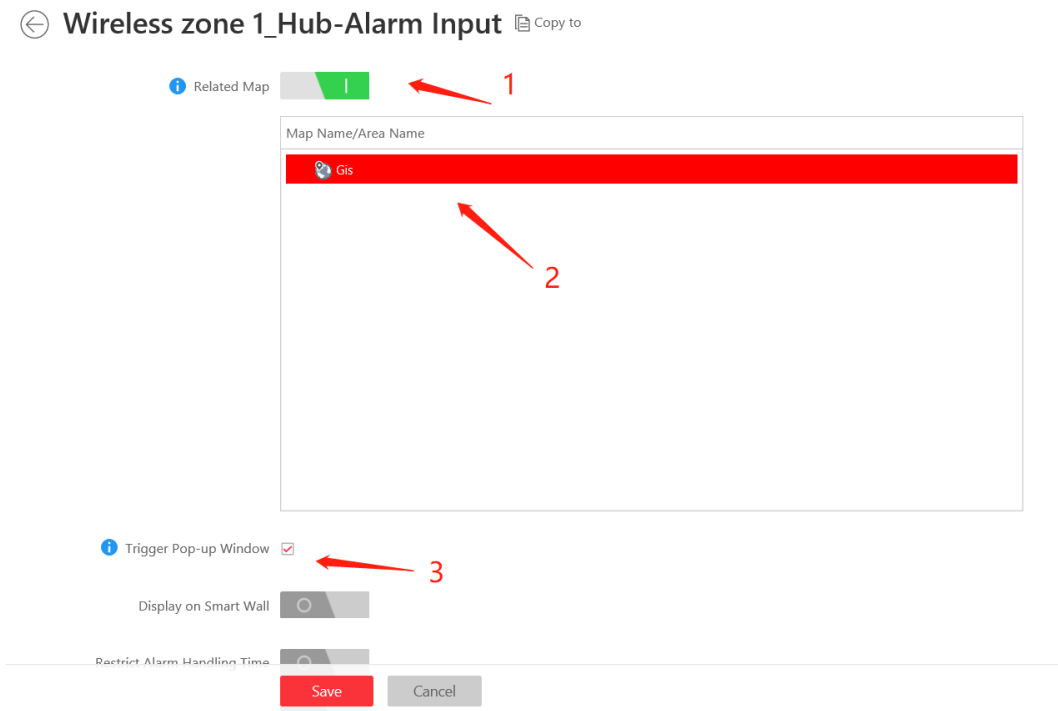
4. Choose **Related Cameras**----- **Device Camera**----**Configure Storage Location**
5. For Display Video type you can choose **Recorded Video** or **Live View**.

<b>Title:</b>	DS-19A How to Configure Hybrid Security Control Panel in HikCentral	<b>Version:</b>	v1.0	<b>Date:</b>	04/16/2019
<b>Product:</b>	DS-19A Series Network Security Control Panel			<b>Page:</b>	6 of 11



6. Click **Related Map**-----choose Map.

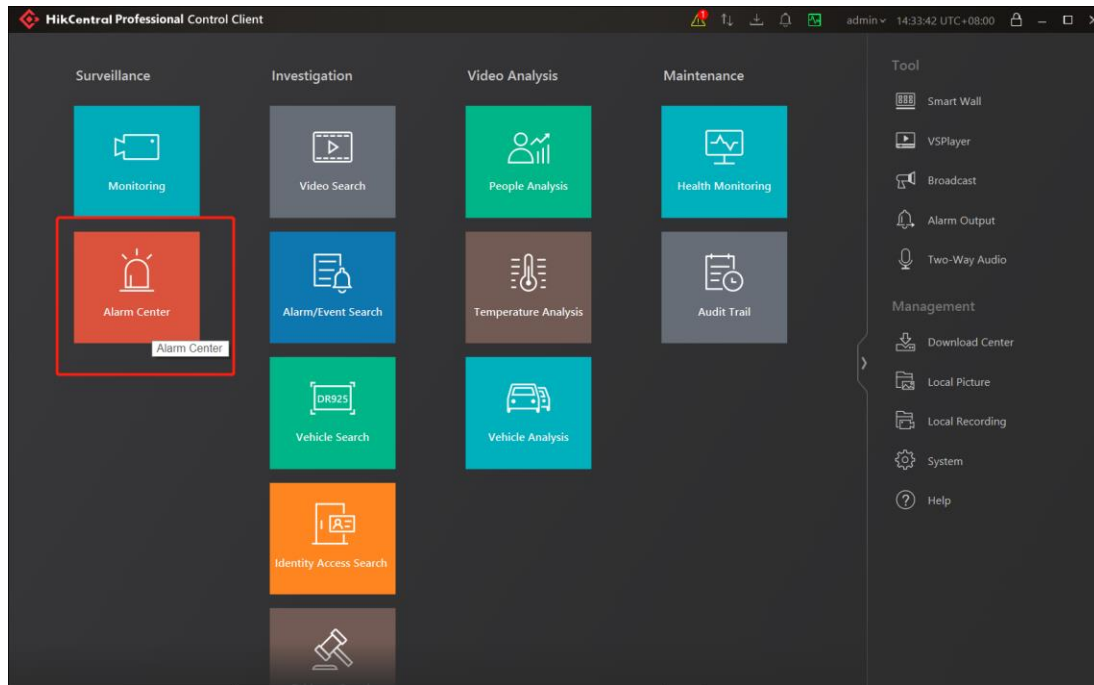
7. Click **Trigger Pop-up Window**.



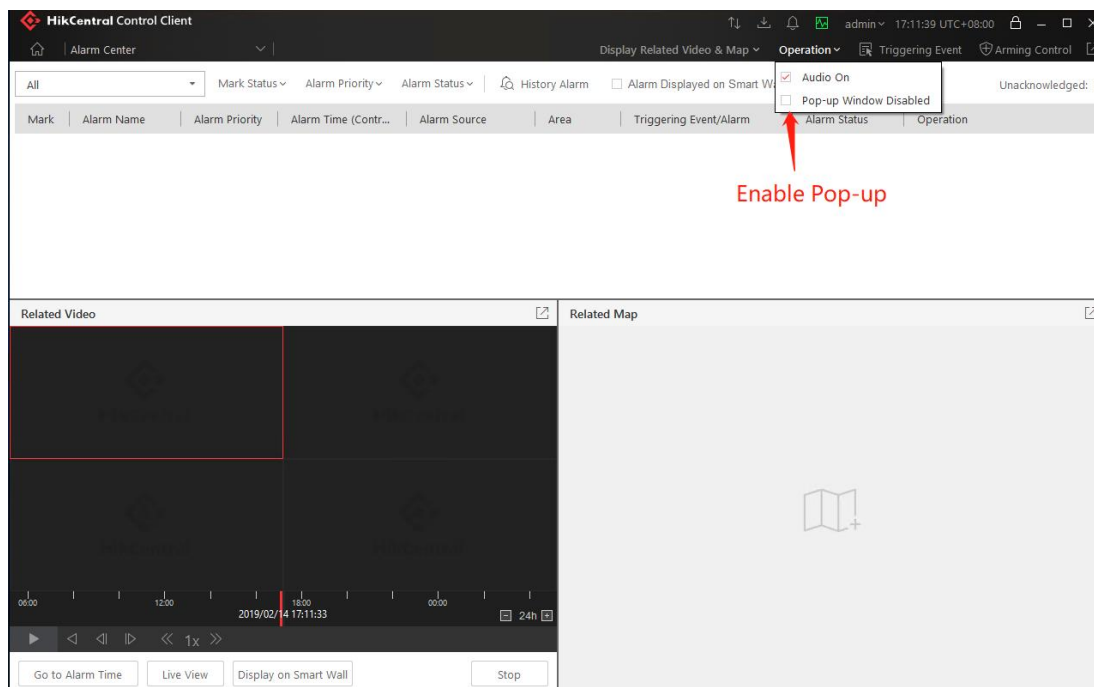
<b>Title:</b>	DS-19A How to Configure Hybrid Security Control Panel in HikCentral	<b>Version:</b>	v1.0	<b>Date:</b>	04/16/2019
<b>Product:</b>	DS-19A Series Network Security Control Panel			<b>Page:</b>	7 of 11

## 5. Configure HikCentral Client.

### 1. Choose Alarm Center.



### 2. Enable Pop-up Window.



<b>Title:</b>	DS-19A How to Configure Hybrid Security Control Panel in HikCentral	<b>Version:</b>	v1.0	<b>Date:</b>	04/16/2019
<b>Product:</b>	DS-19A Series Network Security Control Panel			<b>Page:</b>	8 of 11

## 6. Test Pop up.

1. Test Trigger Alarm by HikCentral Website.
2. You can see the HikCentral Client pop-up window (Include Video and Map).

HikCentral Professional Web Client

System-Monitored Event  
Generic Event  
User-Defined Event  
**Alarm**

Alarm Name	Source	Triggering Event	Alarm Priority	Status	Operation
> Not Handled	Not Handled		High	Enabled	[Edit] [Test] [Disable] [Delete]
> Camera 01-Face Matche...	Camera 01	Face Matched Event	High	Enabled	[Edit] [Test] [Disable] [Delete]
> Camera 01-Frequently A...	Camera 01	Frequently Appeared Person	High	Enabled	[Edit] [Test] [Disable] [Delete]
> Wireless zone 1_Hub-Al...	Wireless zone 1_Hub	Alarm Input	High	Enabled	[Edit] [Test] [Disable] [Delete]
> Alarmin 1_Hybrid Securi...	Alarmin 1_Hybrid Security C...	Alarm Input	High	Enabled	[Edit] [Test] [Disable] [Delete]
> Alarmin 10_Hybrid Secu...	Alarmin 10_Hybrid Security ...	Alarm Input	High	Enabled	[Edit] [Test] [Disable] [Delete]

**Test**

Alarm Information

**Alarmin 1\_Hybrid Security Control Pane...**

Alarm Time (Client) 2019/04/16 17:10:53  
Alarm Time (Devi...) 2019/04/16 17:10:53  
Triggered by: Alarmin 1\_Hybrid Security Control ...  
Triggering Event: Alarm Input(Test)

Description:

Alarm Status: Stop, Unacknowledged  
Alarm Priority: High  
Alarm Category: <None>  
Remark:

**Video & Map**

04-16-2019 Tue 17:10:57

Camera 01

06:00 12:00 18:00 00:00  
2019/04/16 17:10:57

Go to Alarm Time Live View Display on Smart Wall Stop

**Acknowledge** Full Screen Enable Pop-up Window



<b>Title:</b>	DS-19A How to Configure Hybrid Security Control Panel in HikCentral	<b>Version:</b>	v1.0	<b>Date:</b>	04/16/2019
<b>Product:</b>	DS-19A Series Network Security Control Panel			<b>Page:</b>	9 of 11

Alarm Information □ ×

**Alarmin 1\_Hybrid Security Control Pane...**

Alarm Time (Client) 2019/04/16 17:10:53

Alarm Time(Devi... 2019/04/16 17:10:53

Triggered by: Alarmin 1\_Hybrid Security Control ...

Triggering Event: Alarm Input(Test)

Description:

Alarm Status: Stop, Unacknowledged

Alarm Priority: High

Alarm Category: <None>

Remark:

Video
Map

Acknowledge

 Full Screen
  Enable Pop-up Window
 < >

## 7. Control the System.

### 1. Click the Arming Control.

HikCentral Professional Control Client
admin 14:55:00 UTC+08:00

Alarm Center
Display Related Video & Map
Operation
Triggering Event
Arming Control

All
Mark Status
Alarm Priority
Alarm Status
History Alarm
Alarm Displayed on Smart Wall
Unacknowledged: 10

Mark	Alarm Name	Alarm Priority	Alarm Time (Contr...	Alarm Source	Area	Triggering Event/Alarm	Alarm Status	Operation
📁	Wireless zone 1_...	High	2019/04/16 14:48:03	Wireless zone 1_Hub	Hub	Alarm Input_Instant Alarm Zo...	Stop, Unacknowl...	🔔 📄 🗑️
📁	Wireless zone 1_...	High	2019/04/16 14:47:56	Wireless zone 1_Hub	Hub	Alarm Input_Instant Alarm Zo...	Stop, Unacknowl...	🔔 📄 🗑️
📁	Wireless zone 1_...	High	2019/04/16 14:45:21	Wireless zone 1_Hub	Hub	Alarm Input(Test)	Stop, Unacknowl...	🔔 📄 🗑️
📁	Wireless zone 1_...	High	2019/04/16 14:38:52	Wireless zone 1_Hub	Hub	Alarm Input_Detector Added	Stop, Unacknowl...	🔔 📄 🗑️
📁	Wireless zone 1_...	High	2019/04/16 14:38:34	Wireless zone 1_Hub	Hub	Alarm Input_Detector Deleted	Stop, Unacknowl...	🔔 📄 🗑️
📁	Camera 01-Face...	High	2019/04/15 11:23:52	Camera 01	DeepinMind	test_Face Matched Event	Stop, Unacknowl...	🔔 📄 🗑️

Related Video & Picture
Settings

Related Map
🗑️

Arming Control

<b>Title:</b>	DS-19A How to Configure Hybrid Security Control Panel in HikCentral	<b>Version:</b>	v1.0	<b>Date:</b>	04/16/2019
<b>Product:</b>	DS-19A Series Network Security Control Panel			<b>Page:</b>	10 of 11

## 2. Select Triggered by---Alarm Input, then click the Device

The image shows two screenshots of the HikCentral 'Arming Control' interface. The left screenshot shows the 'Triggered by' dropdown menu with 'Alarm Input' selected, and a list of devices with 'Hybrid Security Control Panel' selected. Red arrows point to these selections with labels 'Select Alarm Input' and 'Select Device'. The right screenshot shows the same interface after clicking a device, with a context menu open over 'SubSystem1(Armed)'. Red arrows point to the context menu with the label 'Select Subsystem and Control'.

## 3. Select the subsystem and control(Disarm\Instant Arming\Stay Arming\Away Arming)



<b>Title:</b>	DS-19A How to Configure Hybrid Security Control Panel in HikCentral	<b>Version:</b>	v1.0	<b>Date:</b>	04/16/2019
<b>Product:</b>	DS-19A Series Network Security Control Panel			<b>Page:</b>	11 of 11

**First Choice for Security Professionals**  
**HIKVISION Technical Support**