

<b>Title:</b>	How to Upgrade D8E series Card Enrollment Station	<b>Version:</b>	v1.0	<b>Date:</b>	12/10/2017
<b>Product:</b>	Access Control Device	<b>Page:</b>	1 of 4		



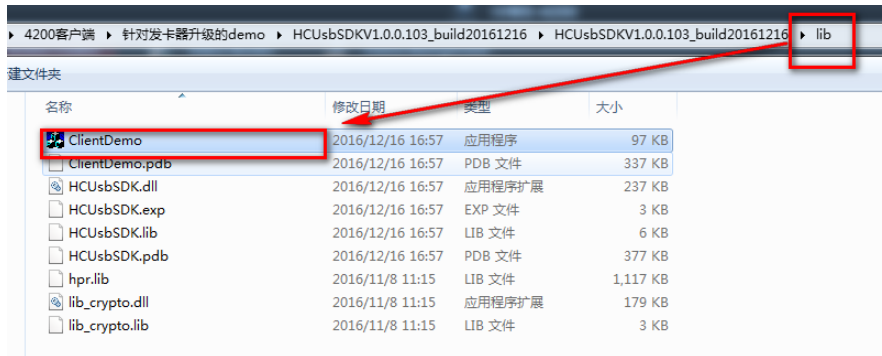
# How to Upgrade D8E series Card Enrollment Station

## Preparation

In this document, the card enrollment station includes DS-K1F100-D8E and DS-K1F180-D8E;  
Make sure you have already got the V2.1.0 firmware and USB Demo for card enrollment station.

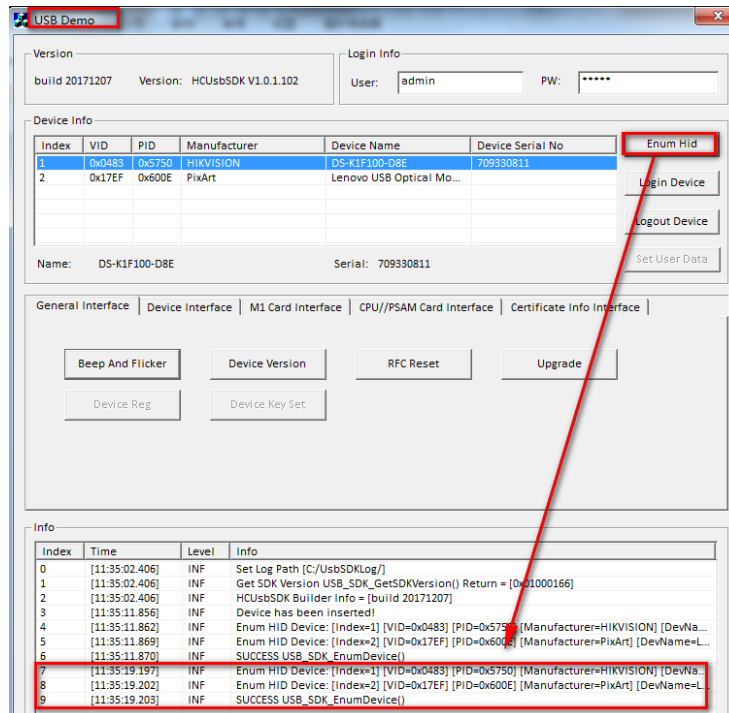
### Step 1:

Unzip the package and enter **lib** folder, and double-click to run **ClientDemo**;



### Step 2:

Connect your D8E series card enrollment station by USB, and you can find your device on USB Demo;  
Select your device and click **Enum Hid**, get 'SUCCESS USB\_SDK\_EnumDevice()';

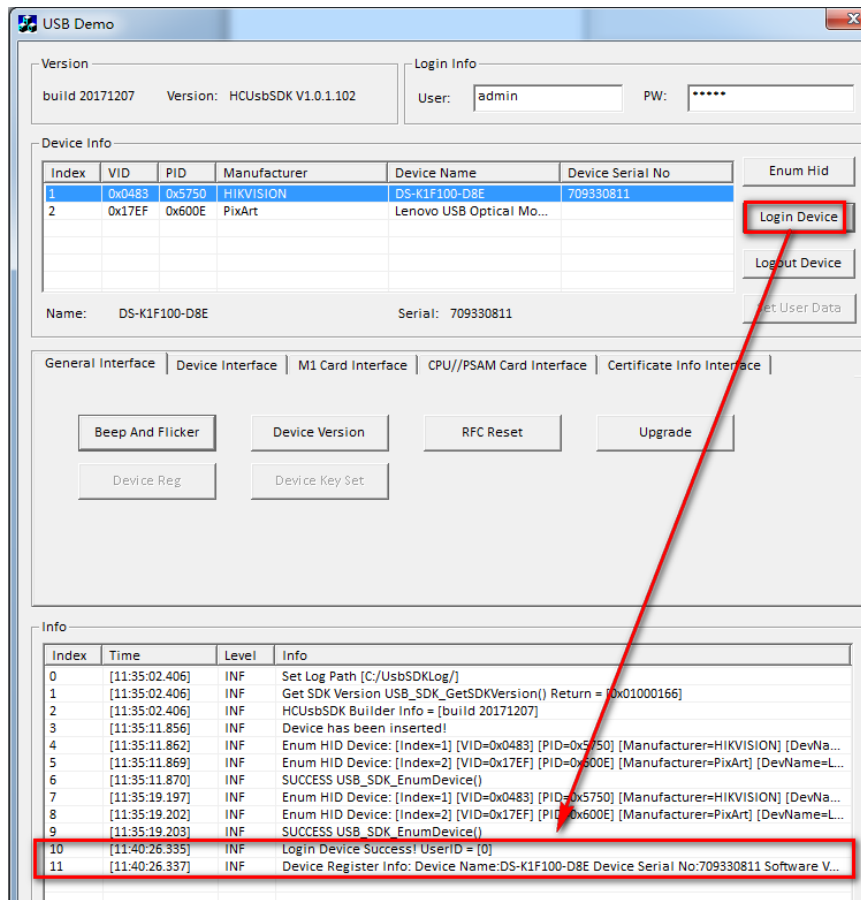


<b>Title:</b>	How to Upgrade D8E series Card Enrollment Station	<b>Version:</b>	v1.0	<b>Date:</b>	12/10/2017
<b>Product:</b>	Access Control Device	<b>Page:</b>	2 of 4		



### Step 3:

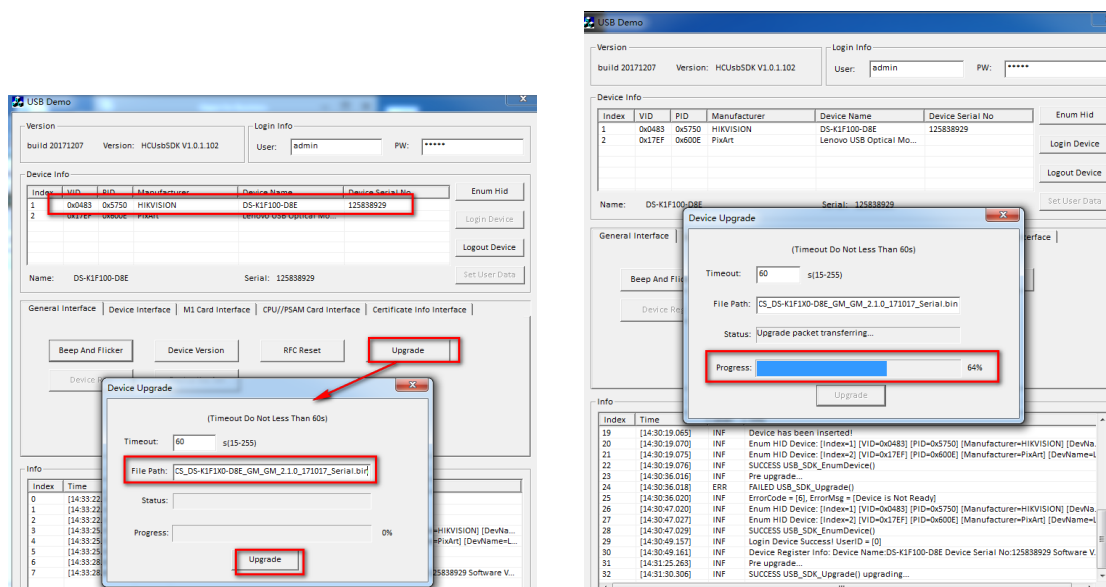
Select your device and click **Login Device**, get 'Login Device Success!';



### Step 4:

Select your device and click **Upgrade**, you will enter Device Upgrade interface;

Copy your firmware path to 'File Path', and click **Upgrade**;



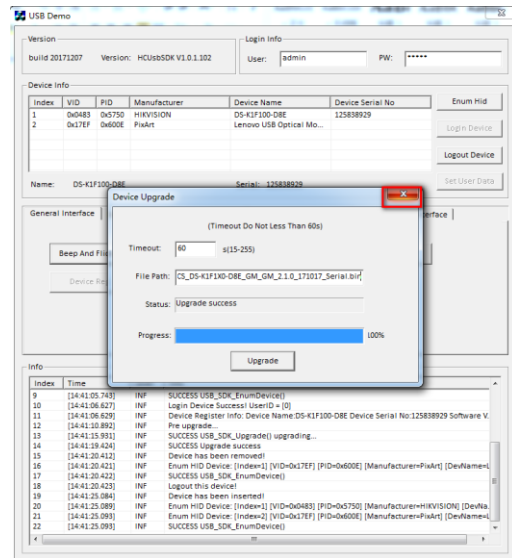
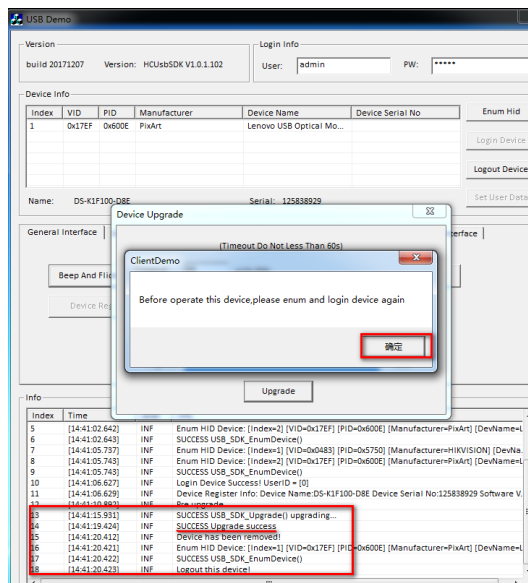
<b>Title:</b>	How to Upgrade D8E series Card Enrollment Station	<b>Version:</b>	v1.0	<b>Date:</b>	12/10/2017
<b>Product:</b>	Access Control Device	<b>Page:</b>	3 of 4		



**Step 5:**

Upgrade succeeded, you will see ‘SUCCESS Upgrade success’;

Please close ClientDemo interface, and then close Device Upgrade interface;



**Step 6:**

Remove your device and run your iVMS-4200 client, and connect your card enrollment station to your computer by USB. Now you can use it to issue card.

<b>Title:</b>	How to Upgrade D8E series Card Enrollment Station	<b>Version:</b>	v1.0	<b>Date:</b>	12/10/2017
<b>Product:</b>	Access Control Device	<b>Page:</b>	4 of 4		



**First Choice for Security Professionals**  
***HIK*VISION Technical Support**