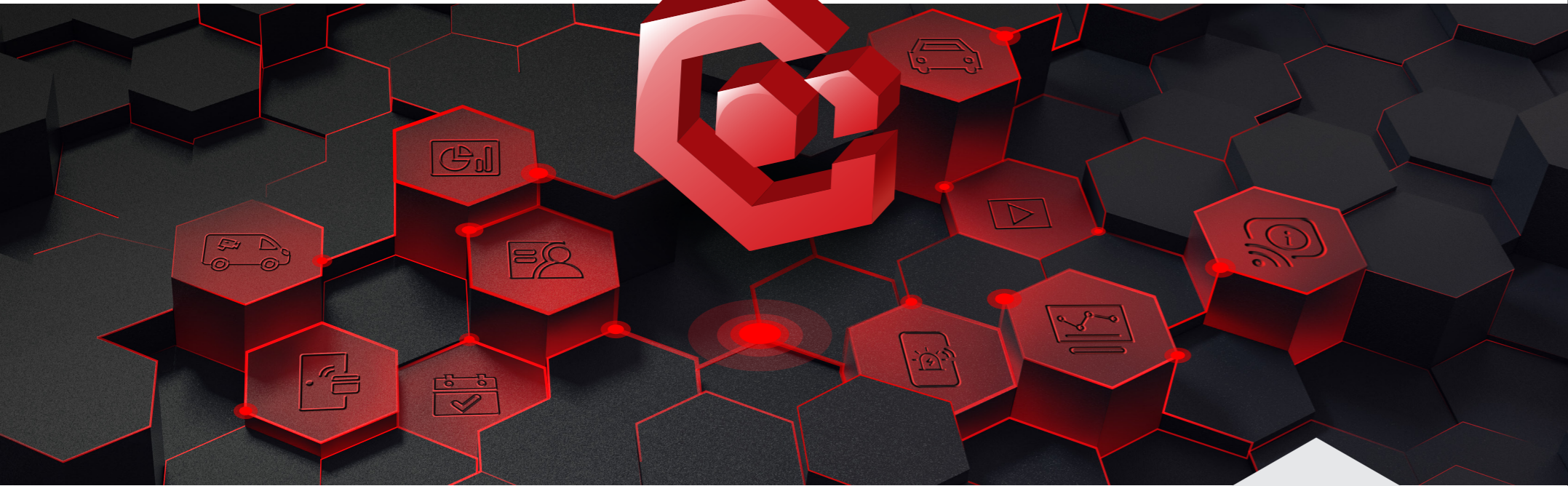




 **HikCentral Professional 2.5**

HIKVISION®



Content Overview

Key Benefits	02	
Integration & Partnership	06	
Core Applications	07	
01 Video	07	
02 Access Control	09	
Advanced Applications	10	
01 Smart Wall	11	09 Evidence Management 17
02 Time & Attendance	11	10 AR 18
03 Parking Lot	12	11 Guard Patrol 18
04 Visitor	13	12 Commercial Display 19
05 Alarm Detection	14	13 Security Inspection 19
06 On-Board Monitoring	15	14 Emergency Mustering 20
07 Intelligent Analysis	16	15 Remote Site Management (RSM) 21
08 Portable Enforcement	17	

What is HikCentral Professional

HikCentral Professional – Hikvision’s security management software – helps professionals tackle various security obstacles on a single platform.

With HikCentral Professional, professionals can effortlessly manage different systems with ease, such as video security, access control, alarm detection, attendance and more. By using this software, you can optimize your day-to-day security operations in various scenarios.

Read on to discover why countless professionals rely on HikCentral Professional and join them in enhancing your security management capabilities.

Key Benefits



Diverse business applications to choose from

All major security needs are covered through a variety of security modules, including video, access control, visitor, time & attendance, parking lot, on-board monitoring, alarm detection, intelligent analysis, commercial display, and more. Whatever your situation, you will find what you need right here.

A unified security system that enhances management operations

HikCentral Professional unifies a wide range of applications and provides a seamless solution for your business, from basic to advanced needs – for example, an intrusion alarm plus access control combine with video verification, or perhaps visitor access with pre-registration of vehicles, and much more.

The centralized management of multi-level roles empowers users with optimized efficiency.

Lightweight solutions for diverse scenarios

HikCentral Professional offers ready-to-go solutions for specific scenarios like stores, logistics parks, bus stations, etc., improving their daily security and operation with data insights and unified management.


Flexible and expandable for customized experience


There are two system installation options for HikCentral Professional, based on your specific needs:

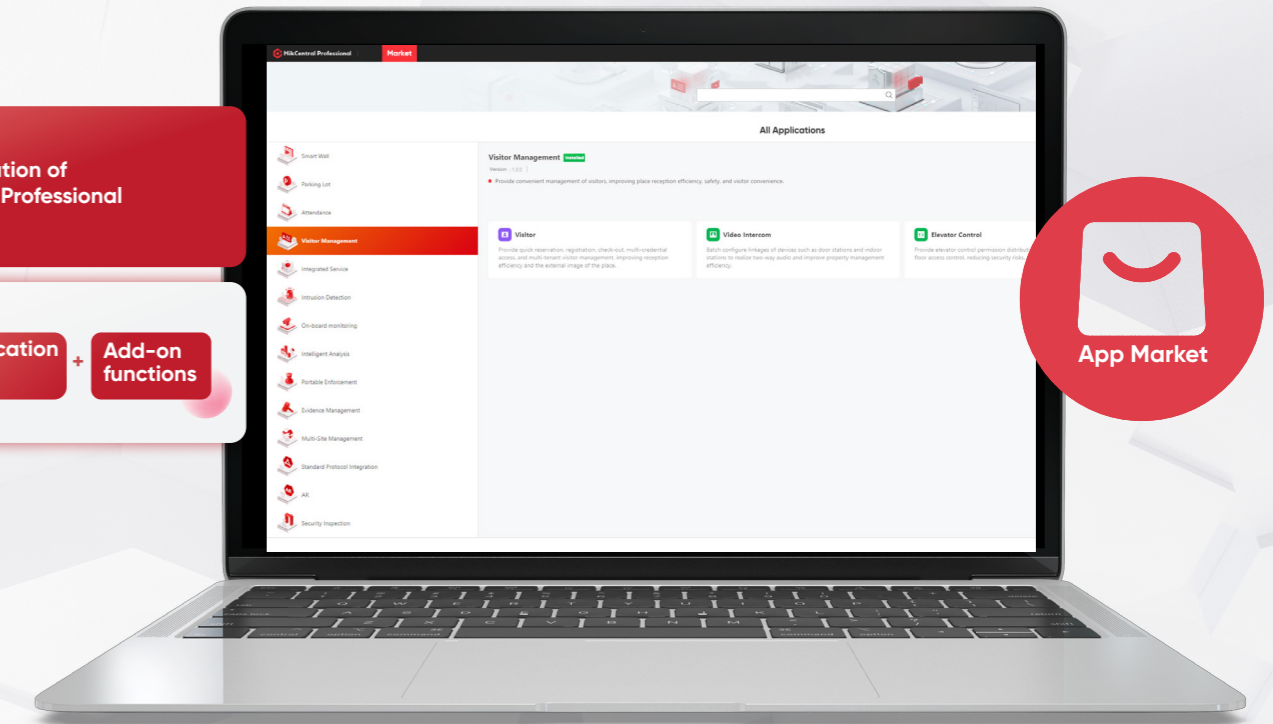
Option One: Full installation of HikCentral Professional

Option Two: Core application package with the flexibility to purchase and deploy add-on functions from the App market in HikCentral Professional

The base package, including video and access control, now requires minimal server performance (starting from i3, 4GB RAM). Easily expand functionalities by downloading applications for various businesses and industries from the **App market**. This way, you can tailor the system to your requirements, whether you prefer a comprehensive installation or a more streamlined approach with the flexibility to add additional features as needed.

 **Option 1: Full installation of HikCentral Professional**

 **Option 2: Core application package + Add-on functions**



Easy operations

User-friendly interface with visualized design and wizards.



Simplified installation

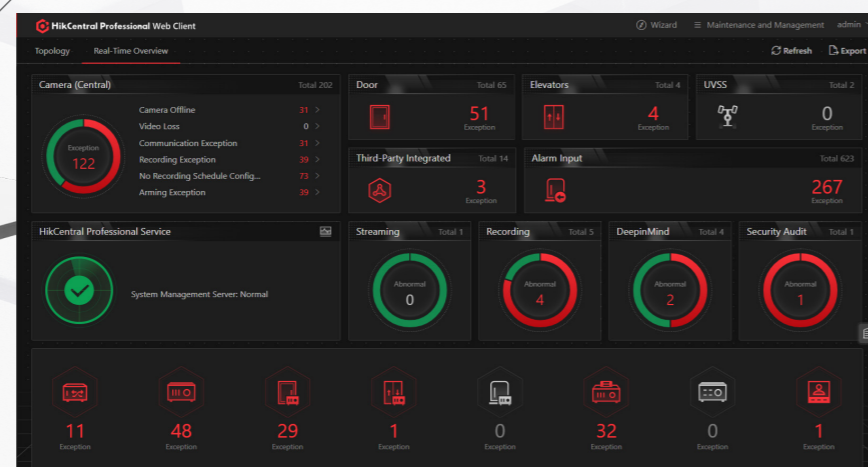
Minimum system requirements for HikCentral Professional is an i3 CPU and 4 GB of RAM.

Easy maintenance

System health status is displayed visually in real time, contributing to faster notifications and locating of abnormal situations. What's more, all system historical records are conveniently trackable.

Role-based permission control

Personalized content display based on your role makes you focus on the applications that matter most.



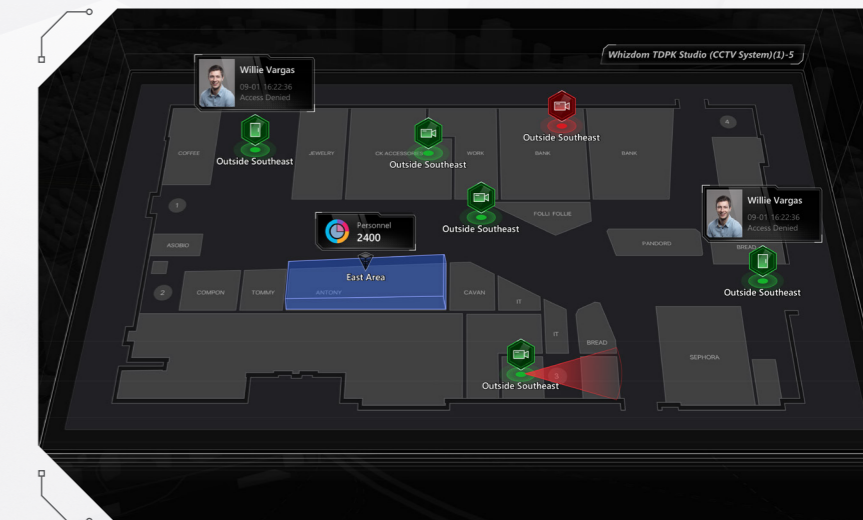
Visualized systems for better insights

Alarm management, event tracking and AR live interaction in a visualized way make it easy to understand data from various applications. The dashboard supports creating a personalized display for the information you care about the most, contributing to smarter decision-making with more situational awareness.



Interactive E-Maps

Interactive E-Maps give users an instant, dynamic view of multiple sites and the status of various devices all at the same time, as well as a shortcut to handle events and alarms directly onboard. It enables management and security staff to get accurate and timely notifications while responding to incidents promptly, enhancing day-to-day operational efficiency.



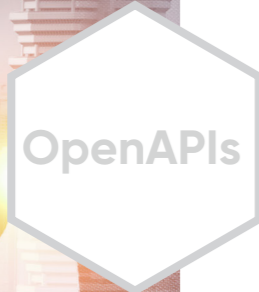
Open system architecture allows easy and convenient integration



Strong integration capabilities

The robust integration capabilities ensure powerful, innovative solutions, extending functionality beyond security to meet diverse demands and requirements.

HikCentral Professional can seamlessly integrate to various systems (e.g., WMS, AMS/CMS, BMS) and manage other devices (e.g., cameras, alarm panels, HVACs, NVRs) via standardized protocols like Onvif, BACnet, and SIA.



Comprehensive OpenAPIs

We offer a suite of professional APIs for your convenience, including a No Plugin Solution delivered through web portal. With our APIs, you can access technical documentation and code samples specifically structured to simplify your system building journey.

We continuously improve with industry developments by adding new APIs and standardized protocols. You can rely on us to provide you with the cutting-edge technologies.

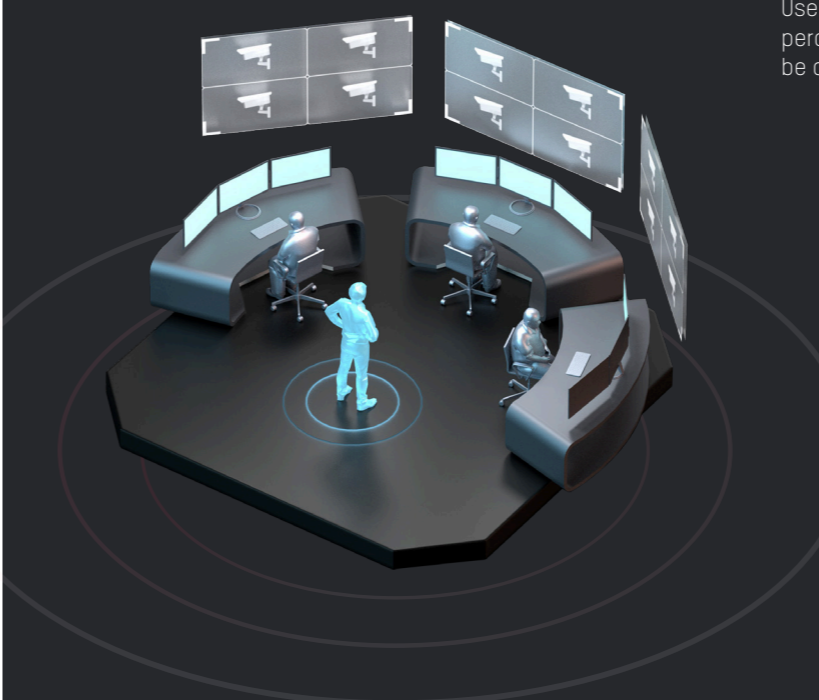


Shared success with global partners

We collaborate with global technology partners to implement time-tested solutions. Our goal is to extend Hikvision's product benefits to you, so together we deliver reliable and expert solutions to meet our customers' needs.

Core Applications

01 Video



Efficient and comprehensive video security

Quickly save scenes and efficiently complete daily monitoring. Users can customize their own view to have a holographic perception of all videos, maps and data. Specified views can be opened in one minute for quick preview and playback.

Low bandwidth network adaptability

Smooth streaming automatically adjusts bitrate and resolution between clients and NVRs or network cameras according to real-time network conditions.

Quick and convenient search and playback

- Users will enjoy the quick incident search and location using thumbnails, supporting sub-stream, transcoded, and frame-extracting playback
- Convenient event search is based on tags and VCA search analysis, as well as key attributes of vehicles and persons
- A quick go-through of video based on event types reduces potential risks by locating high-frequency events in critical areas

Flexible auto-patrolling

Users are able to set up scheduled capture plan based on actual scenarios or needs, and the captured pictures will be sent to users automatically.

Versatile audio broadcasting

Integrating the video security expertise with smart audio capabilities, Hikvision network speaker offers an advanced audio & video linkage solution.

- Centrally control multiple audio devices and broadcast live or pre-recorded voice messages in real time to multiple zones
- Multiple broadcast modes such as scheduled, alarm linkage and emergency mustering, ensuring accurate and timely delivery of critical information

02 Access Control

Video export as evidence

- Supports merging several clips into one downloadable video file, making management workflow simpler and easier
- File export is available in various formats including exe., avi., mp4, and more

Reliable storage satisfies diversified needs



Flexible storage

HikCentral Professional offers event-triggered video recording and playback, along with automated video backup during idle periods. Channel-based video and image storage can be configured as well.



Multiple storage media

Video and images can be stored on various media storage platforms, such as NVRs / DVRs, pStor, Hybrid SAN, and Cluster Storage Servers.



High availability

HikCentral Professional features a fail-safe / high availability design with redundant remote & local backup and scheduled copy-back, along with pStor cluster services and NVR hot swapping.

Comprehensive and flexible access management

Get flexible, customized, and comprehensive access control systems for employees and visitors with diverse credentials including face, iris, fingerprint, card, QR code, PIN code, mobile credentials including Bluetooth and NFC, 512 authentications, and 5 access strategies to choose from, for hundreds of scenarios.



Easy and convenient personnel management

With HikCentral Professional, HRs and managers can easily assign various groups of people with different credentials with step-by-step guidance, manage employee on-board and demission procedures easily, and more.

To register, employees can use their smartphone to scan a QR code generated by HikCentral Professional and register their information remotely; they will receive access permission instantly.

What's more, with HikCentral Professional, it is easier than ever to enter employee information and design their badge with several unique styles and layouts to choose from. With a few clicks, managers can enter their information and print employee badges with all necessary access permissions.

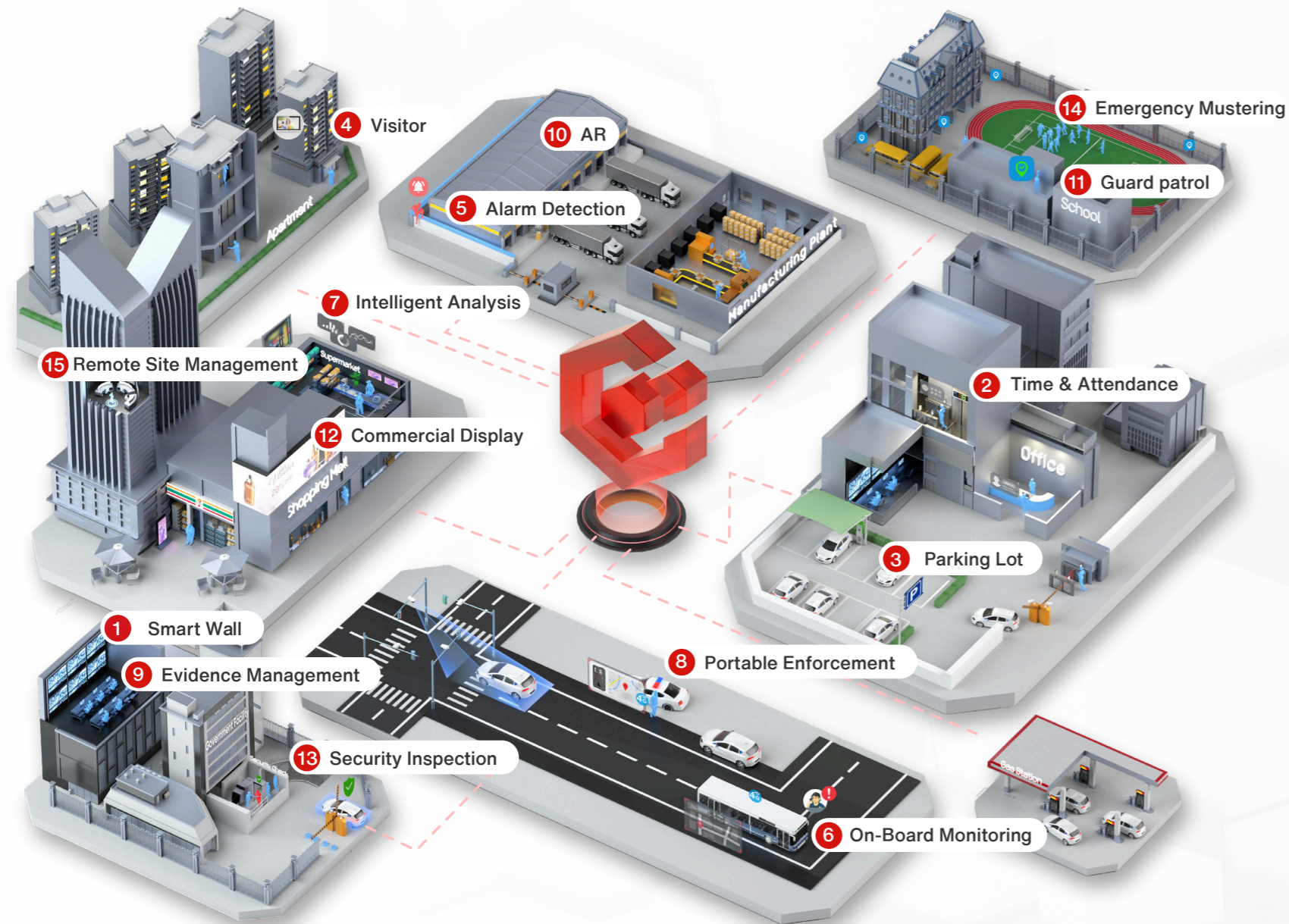


Quick alarm handling

When incidents occur, the access control system will trigger network cameras to capture images and record videos. Security staff can check the video in real time and take multiple any necessary action.

The abnormal access points can be detected timely using e-maps, and the abnormalities are addressed efficiently through video verification.

Advanced Applications



1 Smart Wall

Live data visualization

Operators gain valuable insights through real-time data visualization, which provides a comprehensive overview of key metrics and indicators.

Video carousels and scheduled playback

Operators check on overall situations as well as specific details without manually switching between multiple cameras, allowing for efficient and effective security and analysis.

Alarm notifications on the smart wall

When an alarm is triggered, it provides immediate notification to the operator through pop-up windows on the smart wall, and the corresponding video will automatically play.

2 Time & Attendance

Flexible rule setting

Users can schedule attendance rules for normal, flexible, or cross day shifts based on specific scenarios for offices, factories, stores, and more, and support scheduling designated attendance points.

Various attendance reports

Diverse attendance reports and customizable templates are available. Users can also create personalized report templates based on their needs. Reports can be exported in Excel, PDF, and CSV formats, among others.

Convenient employee self-service

Employees can easily check their attendance results and send anomaly / corrective applications to HRs or managers. All these can be done conveniently on web & mobile app. Based on GEO fencing, checking in and out through mobile app gets easy.

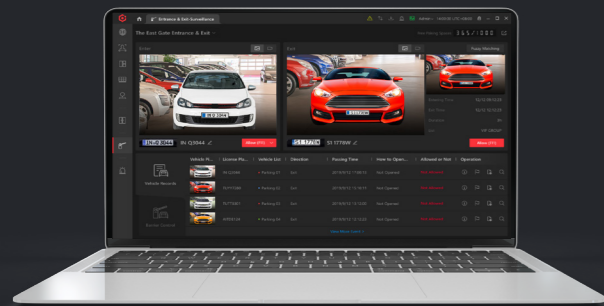
Easy integration with payroll systems

HikCentral Professional integrates widely with third-party software systems such as salary calculation systems, meeting complex demands in a variety of businesses.

3 Parking Lot

Vehicle entrance & exit management

HikCentral Professional supports both self-service card or ticket dispensers and integrates with automatic number plate recognition (ANPR) cameras and touch-free, non-stop vehicle authentication to help reduce rush hour congestion.



Self-service parking assistance

Drivers can easily find their vehicles using the self-service query based on their license plate number. This enhancement aims to provide a seamless and convenient parking experience. Additionally, guidance screens and displays are available to assist drivers in finding available parking spaces.



Advanced statistics and reports

HikCentral Professional enables intuitive and efficient analyses of parking operation and transaction reports. This facilitates in-depth analysis of operations, income, and expenses, assisting with informed decision-making.



Flexible parking fee calculation

HikCentral Professional offers versatile billing and scheduling options to cater to the diverse requirements of parking lots. This includes, the ability to charge yearly, monthly, or other scheduled time periods, as well as setting specific billing rules for different types of drivers. Moreover, the platform supports charging fees by scanning the parking tickets' barcodes or QR codes.

Parking Fee Notice Example	
Free parking within 30 minutes.	
Parking Duration	Rates
Within 1 Hour (Initial Parking Duration)	\$4/hour
Over 1 Hour	\$2/Half an Hour
Max. Fee for All-Day Parking	\$50
The vehicles parked for more than 24 hours will be charged again according to the rules above.	

Parking Fee Notice Example	
Free parking within 30 minutes.	
Parking Duration	Rates
Free parking within 2 minutes.	\$5
2-4hour	\$10
4-8hour	\$15
Max. Fee for All-Day Parking	\$20
The vehicles parked for more than 24 hours will be charged again according to the rules above.	

4 Visitor

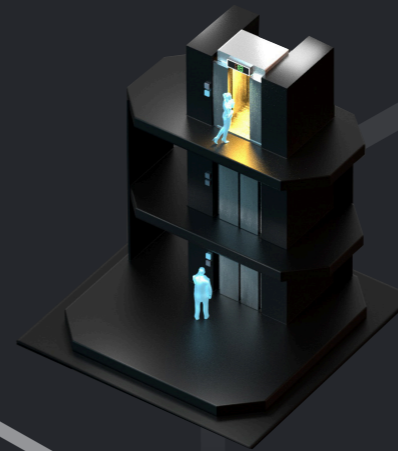
Visitor management

- **Improve visitor satisfaction** with pre-registration, automatic number plate recognition (ANPR) for vehicles, fast access using ID cards or face recognition, and self-service checkout at designated locations
- **Ensure a secure environment for guests** by controlling access to specific areas, and maintaining traceable visit records, with alerts triggered for any visitors' untimely checkouts
- Enable individual companies in the same building to **independently manage their respective visitors**, ensuring visitor privacy while reducing the administrative burden on property management



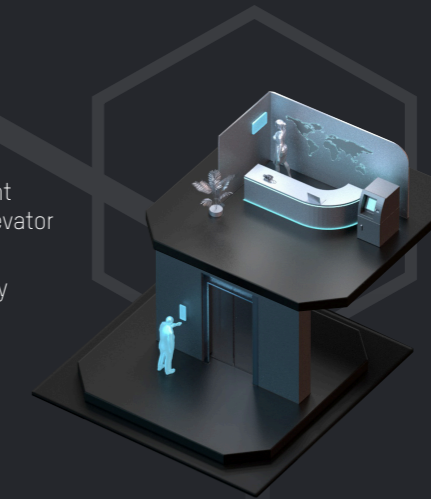
Elevator control

- **Enhance the experience** for building residents and workers through efficient permission distribution and remote elevator control
- **Improve overall security** by effectively managing floor access permissions



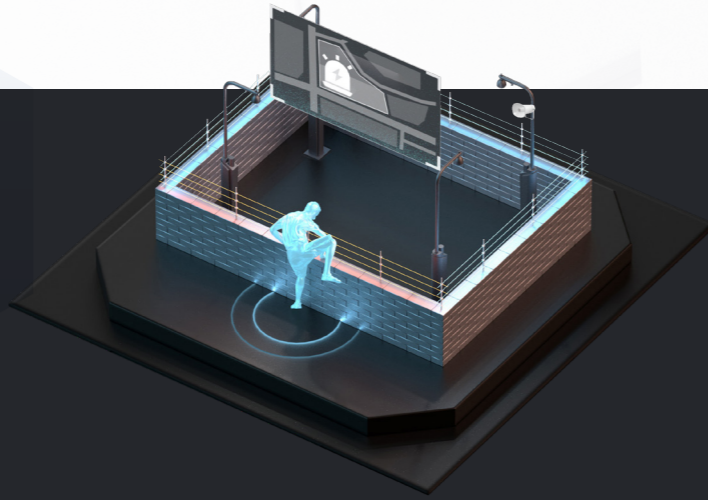
Video Intercom

- Serves as a **centralized platform** to manage the video intercom system
- **Increase delivery efficiency** through device configuration and rule-setting for device interaction
- **Improve property management** with call from the indoor or outdoor station to management staff
- **Enhance resident living experience** with batch notifications to indoor stations



5 Alarm Detection

HikCentral Professional offers comprehensive alarm zone management with real-time monitoring. Instant alerts will be sent to users, helping identify abnormal activities such as intrusions, fire incidents, glass breakage in designated areas. In case of emergencies, one-click assistance through emergency alarm devices is available to enable quick response and effective dispatching.



Real-time zone monitoring

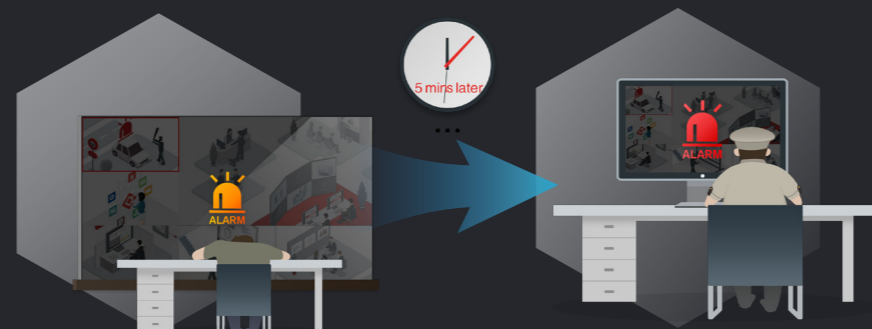
Get a centralized overview of subsystems and visualize the status of alarm zones. This provides continuous situational awareness and enhances overall security effectiveness.

Tailored deployment planning

Customize arming schedules for specific partitions (areas) to define preferred schedules and alarm linkage for alarm inputs within each partition.

Efficient emergency alarms

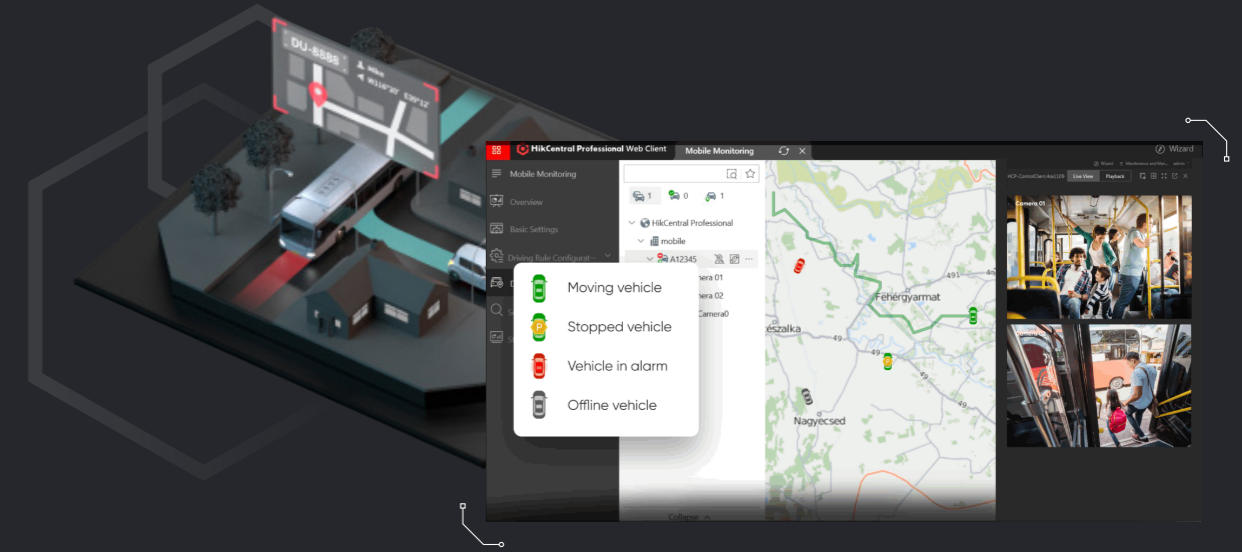
Access an integrated emergency call and intercom system directly within the platform, ensuring timely assistance and coordination.



6 On-Board Monitoring

Efficient on-board monitoring for quick response

HikCentral Professional can serve as a unified platform for mobile security management including real-time GPS positioning and tracking, remote checks on vehicle driving conditions, and more. Accurate detection and alarms enable quick response to abnormal driving events, ensuring the safety of both the driver and the vehicle.



Flexible and convenient video management solution

Users get flexibility with viewing the live feed, store and play back video clips from the mobile video recorders on vehicles from the command center, upload event videos under mobile network, and back up videos using Wi-Fi.

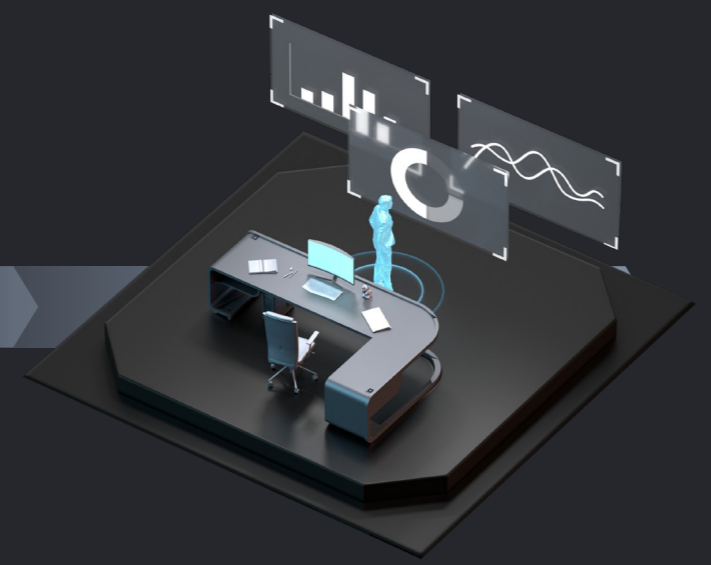
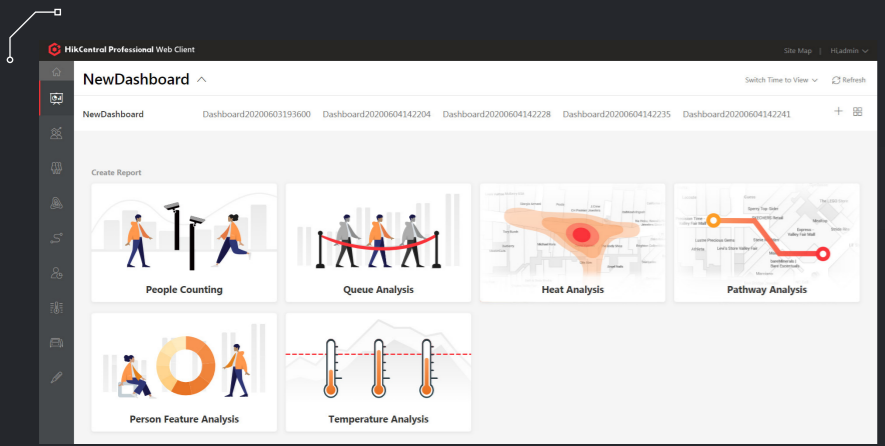


Customized reports for enhanced operational efficiency

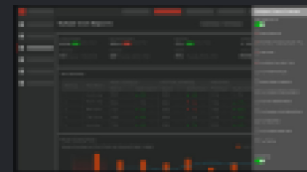
With a diversity of report templates to choose from, users can effectively gain insights on vehicle driving conditions like distance, time, and much more, helping better schedule and optimize operations.

Multi-dimensional analysis reports, scheduled video backups, and evidence management are helpful for thorough problem investigation and documentation.

7 Intelligent Analysis



Single / Multiple Store(s) Reports



Store comparison reports

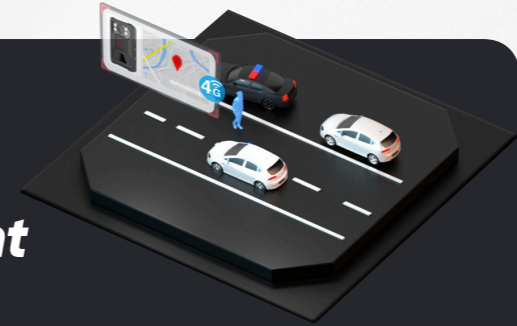


Store promotional day report



- Gain a holistic understanding and **evaluate key metrics** such as walk-in rate, people counting, queue analysis, heat analysis, pathway analysis and more
- Ensure **accurate customer traffic data** by excluding staff and repeat customers, revealing the true "Customer Traffic In" and enabling conversion rate analysis
- Leverage **smart commercial analyses** with intuitive dashboards and diverse BI reports, including single / multiple store reports, store comparison reports, promotion day report, to help store managers evaluate operations and make data-driven decisions

8 Portable Enforcement



Efficient law enforcement management

- Pre-departure management of devices, personnel and access controls, with support for AD domain single sign-on
- Effective communication during duty, facilitated by tagged recording, real-time tracking and remote assistance
- Archiving of duty records for device maintenance, duty analysis and record management

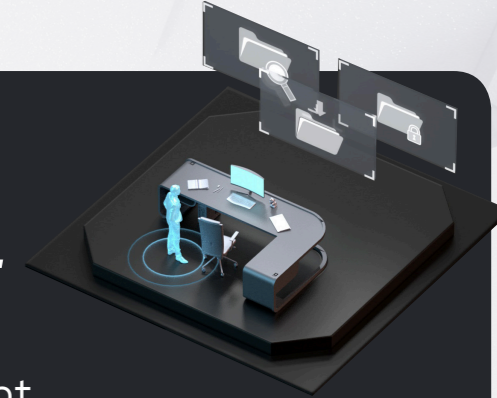
Unified and flexible file management

Quick retrieval of important recordings, long-term backups, and file-level permission management for regular users and supervisors

Easy setup and maintenance

Automatic detection and addition of handheld devices through collection stations, with detailed statistical logs for personnel and equipment usage

9 Evidence Management



File management

- Convenient information collection across multi-clients (mobile, web, control client) for uploading files
- Unified management of evidence files from various services, including videos, pictures, audios, and documents uploading in the daily operations
- Long-term backup and efficient retrieval: evidence classification, archiving, retrieval, export, all managed in one place

Case management

- Users can add multiple associated files into one case, displaying basic information, case content, and operational records
- The built-in video edit function allows for quick editing and captioning, even for users without prior video experience
- Comprehensive operational records related to the case are provided, including creation, modification, file upload, export, and more



10 AR

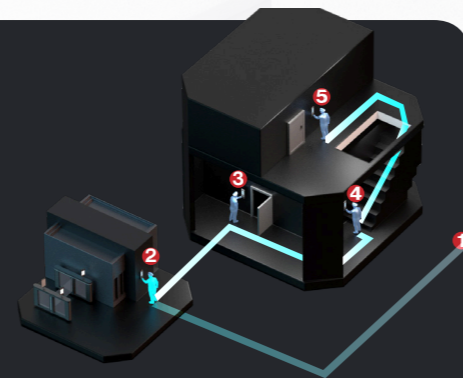
- Provide a complete perception of **panorama and details in open spaces** such as industrial parks and construction sites, using the "Pic in Pic" mode for finger-based operations that simulate being on-site. Easily access key position cameras without losing the global view.
- **Locate key positions** on the AR Live Map with tags through simple "Click" and "Filter" buttons
- **3D Target tracking realized on AR augmented devices.** Design an efficient process for quick event handling with a closed loop from notification to acknowledgment



11 Guard Patrol

Inefficient patrol schedule management and proxy patrolling can mean headaches for security managers. This solution aims to make guided patrols more convenient and efficient.

- **Design patrol schedules** and routes effortlessly using an intuitive e-map interface
- Security staff **check in using access control devices** via face recognition, fingerprints, or QR code with all data automatically uploaded to the software
- **Report anomalies during the patrol** to the center via a mobile app, with all patrolling data automatically uploaded and saved on HikCentral Professional
- **Alarms triggered instantly** if unauthorized individuals attempt to conduct patrol
- **Comprehensive patrol reports** enable managers to assess performance effectively
- Allows for **QR code patrols** in some places where wiring or device installation is not possible



12 Commercial Display

Rich content creation

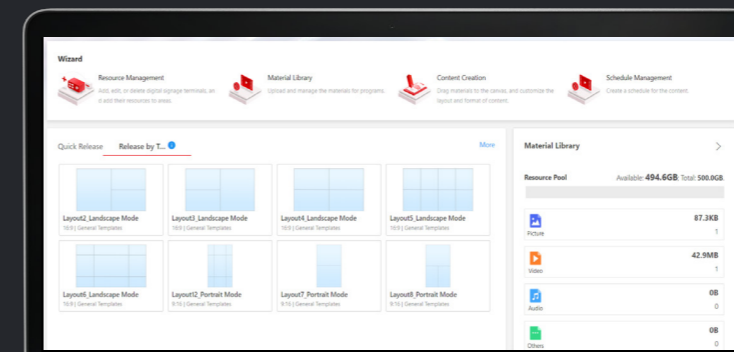
Create vivid and attractive advertisements with 13 content forms and various templates to choose from. The display of people counting programs enables better service to customers.

Quick design process

Choose from 8 pre-installed program templates, and easily input desired content.

Remote management

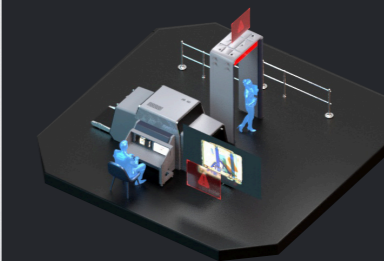
Access and manage devices remotely across multiple branches, eliminating the need for on-site control.



13 Security Inspection

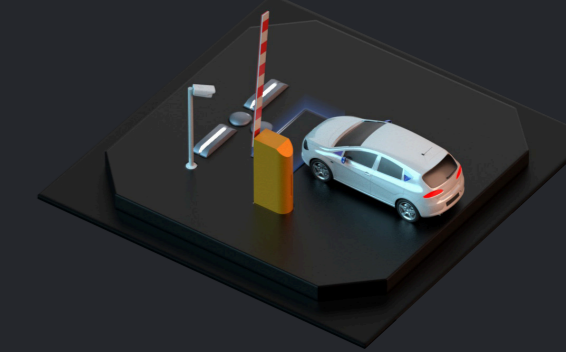
Threats detection

- Identify a wide range of prohibited items timely and accurately, reducing labor costs and security threats
- Simplify centralized management with real-time detection results, alarm information, and live view



Under vehicle surveillance system (UVSS)

The under vehicle surveillance system accurately detects anomalies beneath vehicles, significantly reducing security risks. It utilizes a comparison function to provide precise scan results in a single, high-resolution photo with low distortion, ensuring a thorough inspection of vehicles passing through.



14 Emergency Mustering

Instant response to emergencies

When emergencies occur, HikCentral Professional can automatically or manually trigger to start the emergency state with just one click.

Enhanced evacuation experience

The system will trigger IP speakers for a cycled broadcast of evacuation messages and keep all doors open along the escape route, helping personnel quickly assemble at muster points.



Augmented security levels for everyone

At the muster points, the security staff can efficiently count and verify everyone's safety. If someone is missing, they can check the most recent locations where stranded personnel swiped ID cards.

15 Remote Site Management (RSM)

HikCentral Professional facilitates centralized monitoring, alarm management and maintenance across hundreds or thousands of sites.

Highly scalable architecture

Manage multi-site systems in one place, providing a unified view of all the connected cameras, doors, video walls, People Counting units, ANPR units, etc. With this, all associated events and alarms across sites can be accessed from a single location.

Top-level system capacity

Far exceed regular multi-site solutions in terms of the number of devices, remote sites and concurrent events to be handled by the system, making it ideal for large-scale and high-stake security projects.

HikCentral Professional

Get flexible add-ons to suit your needs

HIKVISION



Follow us on social media to get the latest product and solution information



HikvisionHQ



hikvisionhq



Hikvision_Global



HikvisionHQ



Hikvision



Hikvision Corporate Channel