

Title:	New Secure Activation Process for IP Cameras				
Date:	05/05/2015	Version:	1.0	Pages:	1 of 9
Product:	All Hikvision IP Cameras				
Action Required:	None, information only				

Summary

To ensure the highest level of protection, Hikvision has launched a new secure login procedure that requires users to create a new admin account password upon the first login to all devices. The password must contain 8 to 16 characters, combining numbers, lowercase letters, uppercase letters, and special characters. At least two types of the above-mentioned characters are required to activate the device. Passwords of inadequate strength will not be accepted.

Procedure

Cameras starting with firmware v5.3.0 *WILL NO LONGER HAVE A DEFAULT PASSWORD*. The user must activate the camera by creating a password for the ADMIN account, which can be done in one of three ways:

- **SADP Software Activation (v2.xxxx or higher)**
 1. Launch the new version of the SADP software (v2.2.3.5). The software will display all Hikvision devices on the network. A new field called “Security” will display whether the camera is active or not (**Figure 1**).
 2. If the camera is “Inactive,” highlight the camera and enter a new password into the “New Password” field on the bottom right of the screen (**Figure 2**). The password strength will be displayed, accompanied by a color indicator (red indicates inadequate strength; green indicates adequate strength. Bar length indicates strength magnitude). Activation will not be allowed unless the password is of adequate strength (**Figure 3**).
 3. Retype the password into the “Confirm Password” field.
 4. After the password has been entered and confirmed, press the **OK** button. A confirmation window will appear (**Figure 4**).

Title:	New Secure Activation Process for IP Cameras				
Date:	05/05/2015	Version:	1.0	Pages:	2 of 9
Product:	All Hikvision IP Cameras				
Action Required:	None, information only				

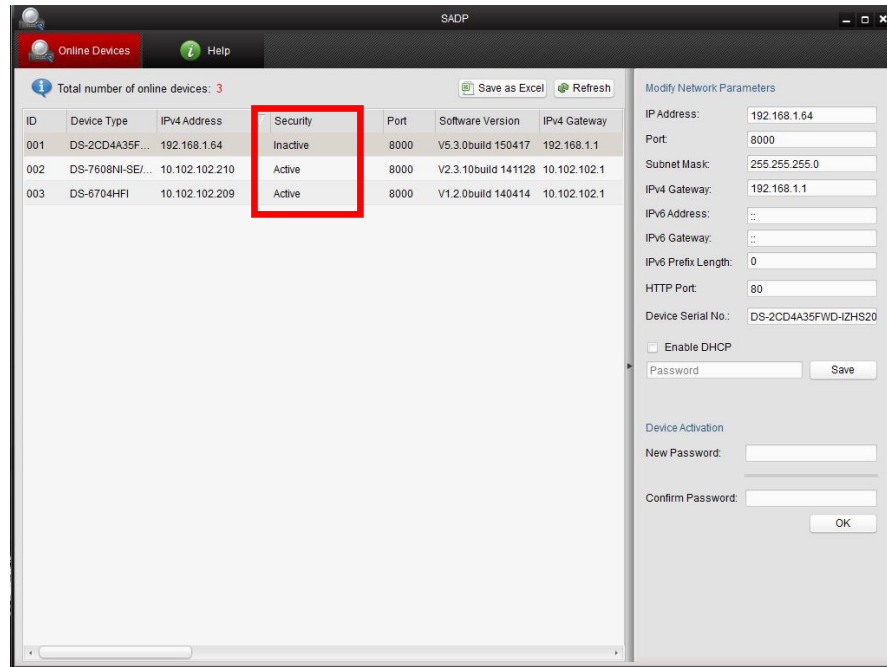


Figure 1 Security Field

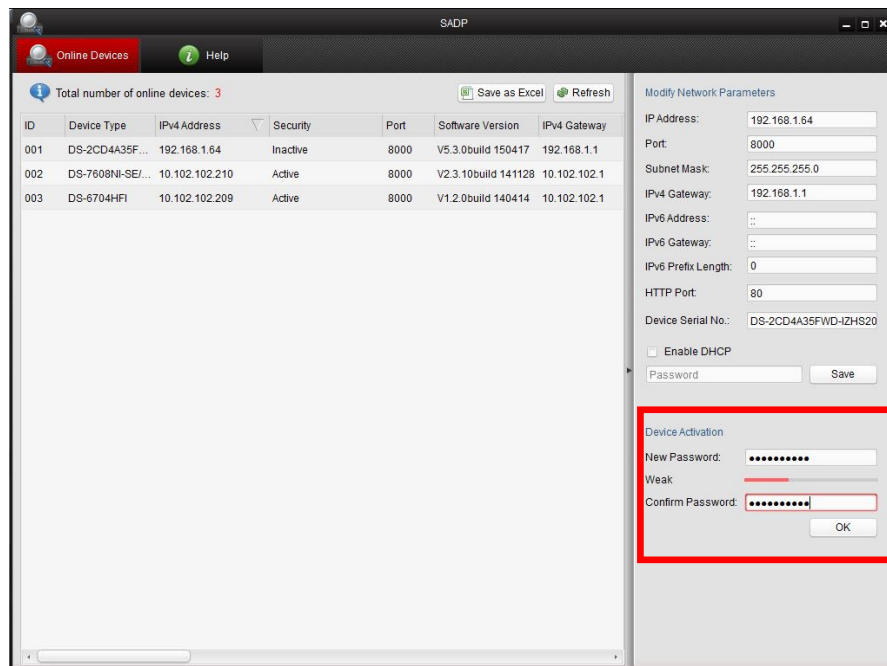


Figure 2 Password Field

Title:	New Secure Activation Process for IP Cameras				
Date:	05/05/2015	Version:	1.0	Pages:	3 of 9
Product:	All Hikvision IP Cameras				
Action Required:	None, information only				

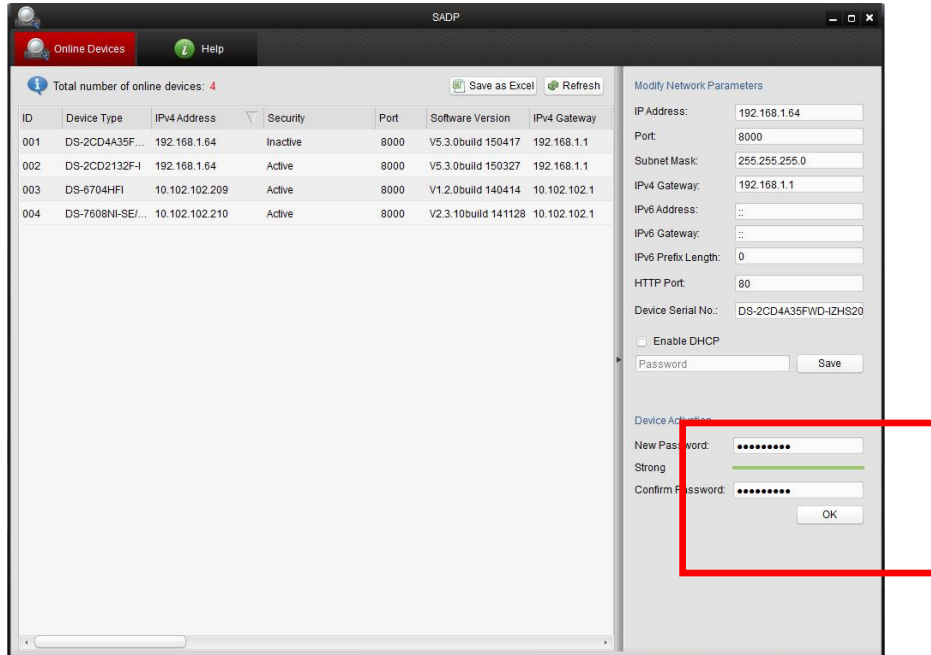


Figure 3 Password Strength Bar

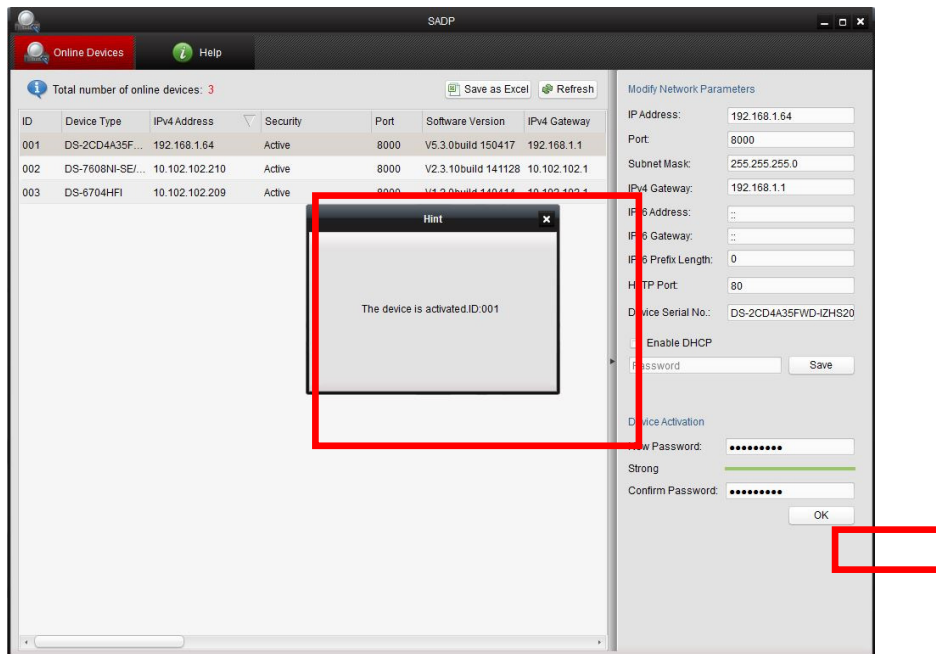


Figure 4 Confirmation Window

Title:	New Secure Activation Process for IP Cameras				
Date:	05/05/2015	Version:	1.0	Pages:	4 of 9
Product:	All Hikvision IP Cameras				
Action Required:	None, information only				

- **ivMS-4200 Client Software (v2.3.3.5 or higher) Activation**

1. Launch the ivMS-4200 software.
2. Go to **Control Panel**→**Device Management (Figure 5)**. On the bottom of the screen in the Online Devices portion the screen will display all Hikvision devices on the network. A new field called “Security” will display whether the camera is active or not (**Figure 6**).
3. If the camera is “Inactive,” highlight the camera and press the **Activate** button (**Figure 6**) to display the “Activation” window.
4. Enter a new password into the “New Password” field (**Figure 7**). The password strength will be displayed, accompanied by a color indicator (red indicates inadequate strength; green indicates adequate strength. Bar length indicates strength magnitude). Activation will not be allowed unless the password is of adequate strength (**Figure 8**).
5. Retype the password into the “Confirm Password” field.
6. After the password has been entered and confirmed, press the **OK** button. The camera’s status will change to “Active” (**Figure 9**).

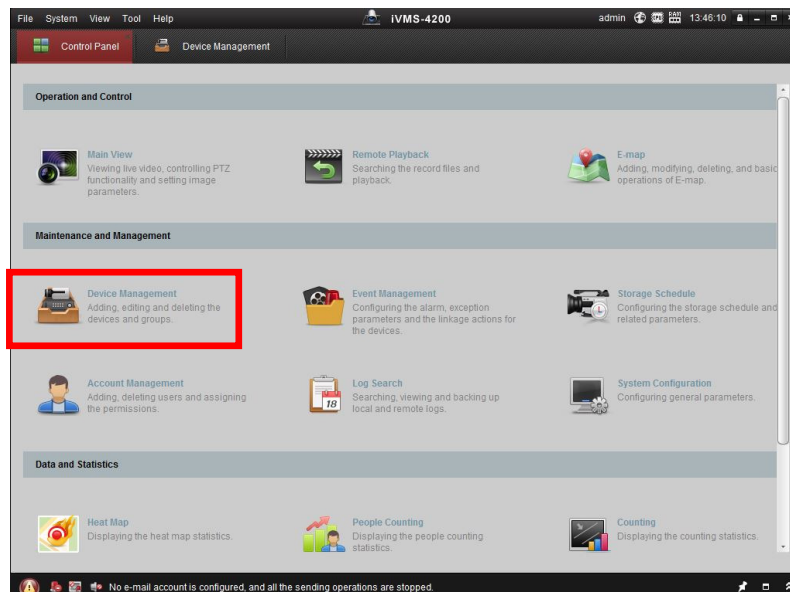
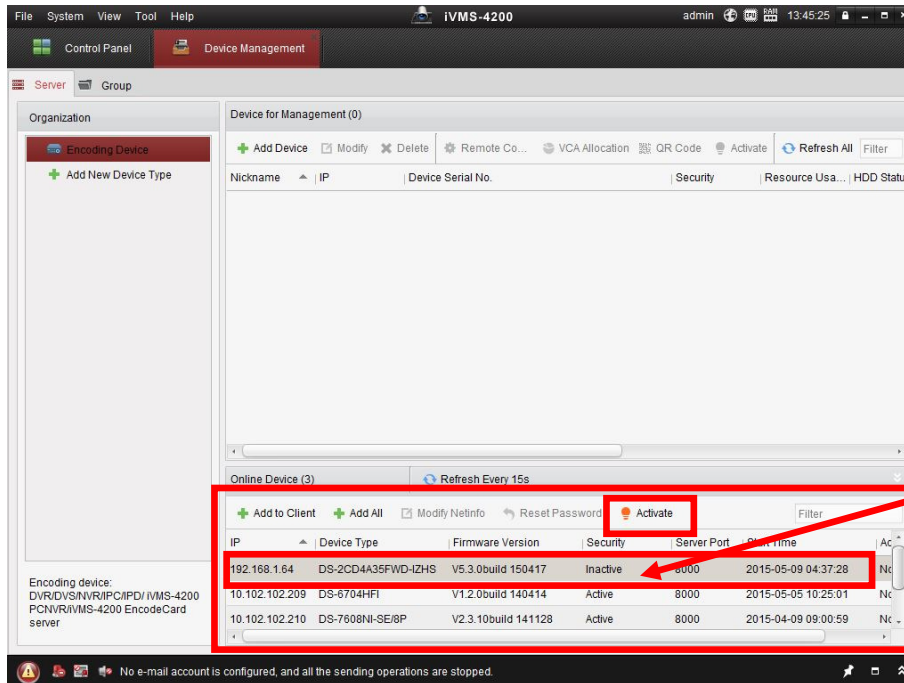


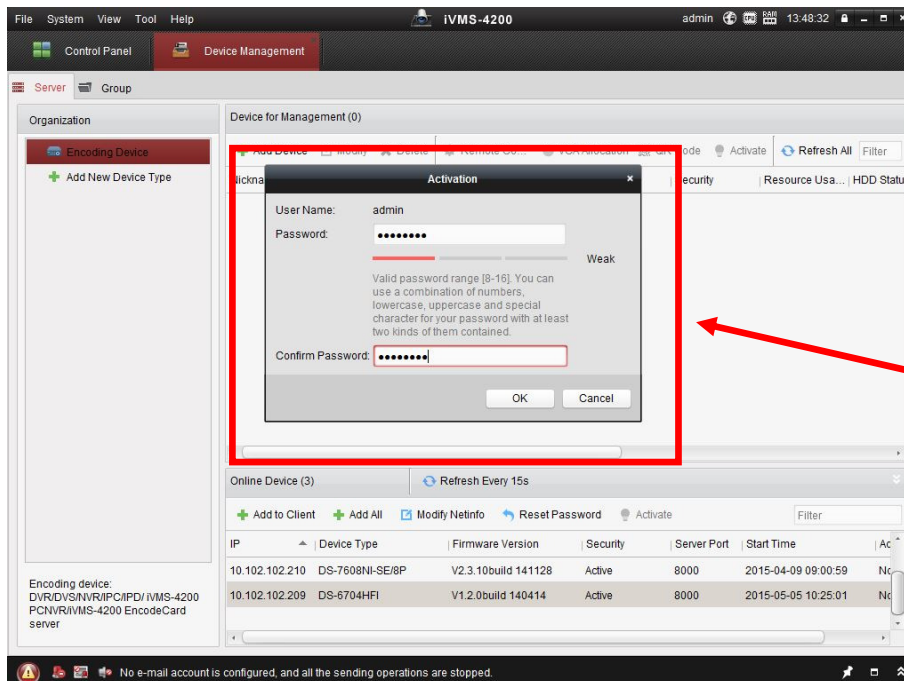
Figure 5 ivMS 4200 Control Panel

Title:	New Secure Activation Process for IP Cameras				
Date:	05/05/2015	Version:	1.0	Pages:	5 of 9
Product:	All Hikvision IP Cameras				
Action Required:	None, information only				



Camera Status:
Inactive

Figure 6 Inactive Camera Status



NOTE: The password strength is shown with a color indicator

Figure 7 Activation Window with Inadequate Password Strength

Title:	New Secure Activation Process for IP Cameras				
Date:	05/05/2015	Version:	1.0	Pages:	6 of 9
Product:	All Hikvision IP Cameras				
Action Required:	None, information only				

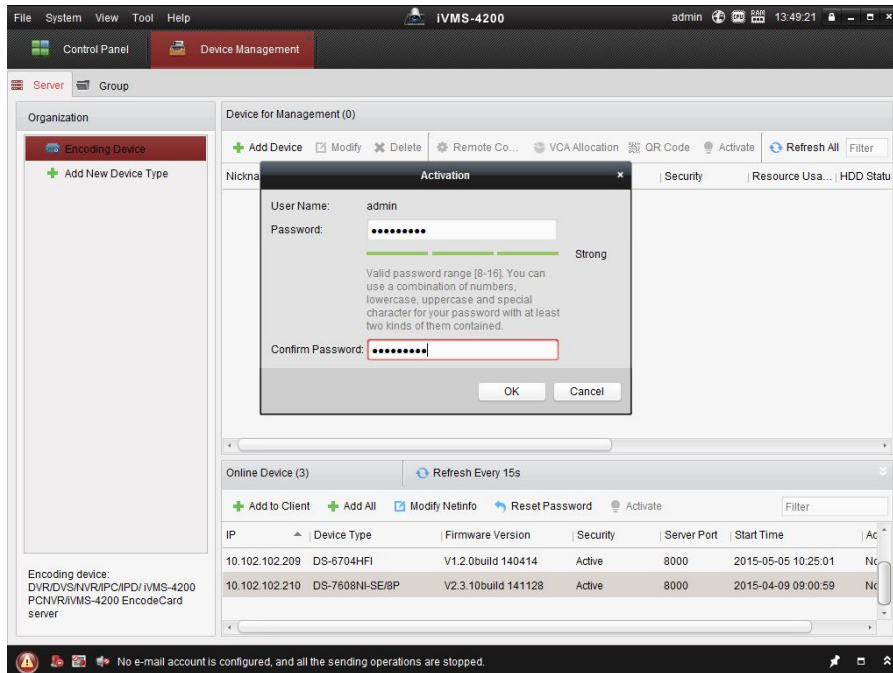
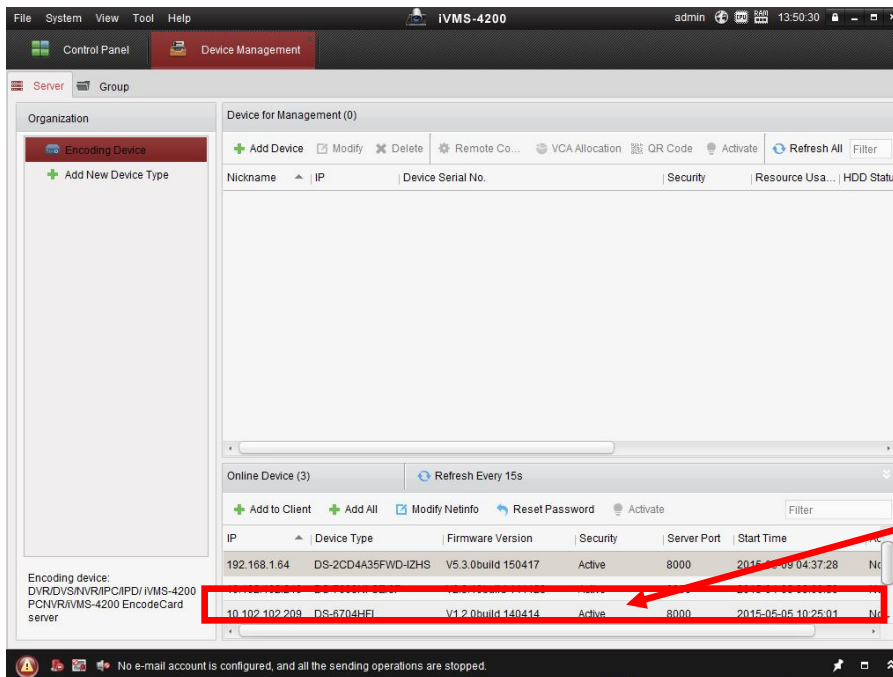


Figure 8 Activation Window with Adequate Password Strength



Camera Status:
Active

Figure 9 Active Camera Status

Title:	New Secure Activation Process for IP Cameras				
Date:	05/05/2015	Version:	1.0	Pages:	7 of 9
Product:	All Hikvision IP Cameras				
Action Required:	None, information only				

- **Web Interface Activation (use if the SADP or iVMS-4200 software do not support the activation procedure)**

1. In a Web browser (i.e., Internet Explorer, Chrome, Safari), type the camera's IP address and press **Enter**. The Activation Window will appear instead of the login page (**Figure 10**).
2. Enter a new password into the "Password" field. The password strength will be displayed, accompanied by a color indicator (red indicates inadequate strength; green indicates adequate strength. Bar length indicates strength magnitude) (**Figure 11**). Activation will not be allowed unless the password is of adequate strength (**Figure 12**).
3. Press the **OK** button. After a successful activation the user will be logged in to the camera's live view page.

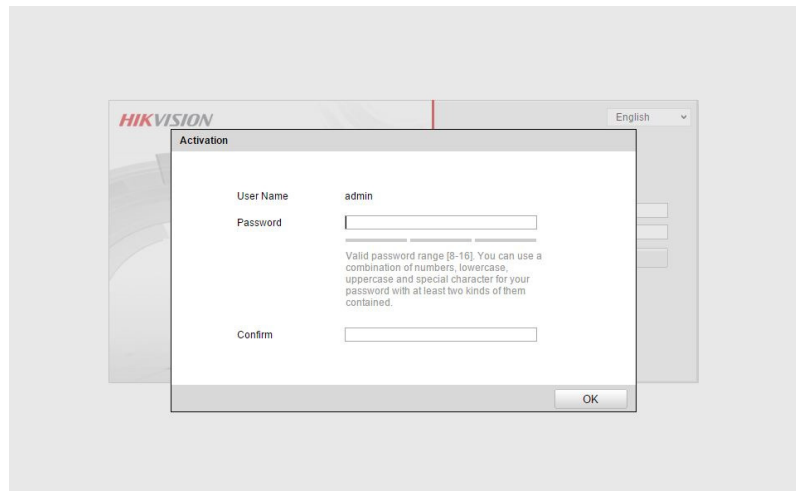


Figure 10 Activation Window

Title:	New Secure Activation Process for IP Cameras				
Date:	05/05/2015	Version:	1.0	Pages:	8 of 9
Product:	All Hikvision IP Cameras				
Action Required:	None, information only				

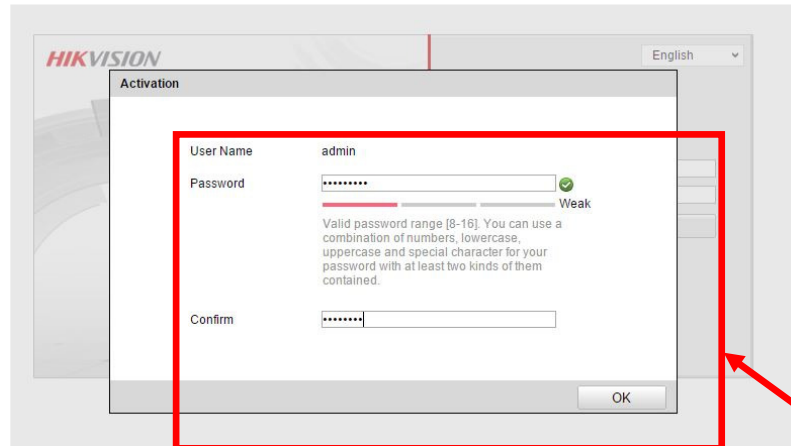


Figure 11 Activation Window with Inadequate Password Strength

NOTE: The password strength is shown with a color indicator

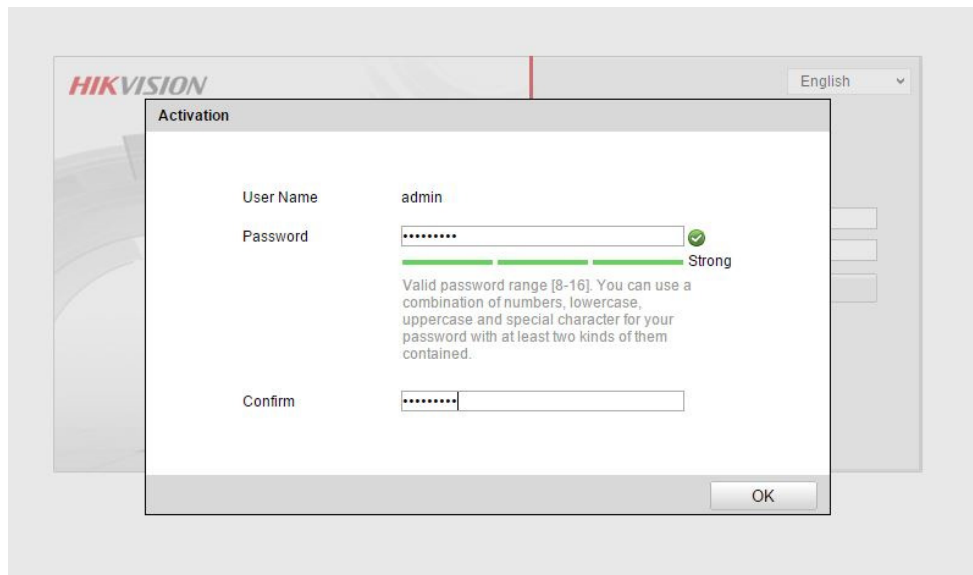


Figure 12 Activation Window with Adequate Password Strength

Title:	New Secure Activation Process for IP Cameras				
Date:	05/05/2015	Version:	1.0	Pages:	9 of 9
Product:	All Hikvision IP Cameras				
Action Required:	None, information only				

Password Strength Levels

STRENGTH LEVEL	DESCRIPTION
<p>Level 0 (Risky)</p> <p>Cameras will not accept a Level 0 password</p>	<p>Password length is fewer than eight characters, contains only one type of character, is the same as the user name, and/or is the mirror writing of the user name.</p>
<p>Level 1 (Weak)</p> <p>Cameras will accept a Level 1 password</p>	<p>Password contains two kinds of characters. The combination is number + lowercase letter or number + uppercase letter, and the password length is at least eight characters.</p>
<p>Level 2 (Medium)</p> <p>Cameras will accept a Level 2 password</p>	<p>Password contains two types of characters. The combination is neither number + lowercase letter <i>nor</i> number + uppercase letter, and the password length is at least eight characters.</p>
<p>Level 3 (Strong)</p> <p>Cameras will accept a Level 3 password</p>	<p>Password contains more than three types of characters, and the password length is at least eight characters.</p>

NOTE: Types of characters are lowercase letters, uppercase letters, numbers, and special characters. Only ASCII characters are allowed.