

<b>Title:</b>	How to Add Peripheral (Detector/Card/keyfob) to the Control Panel by Hik-Connect	<b>Version:</b>	v1.0	<b>Date:</b>	10/10/2018
<b>Product:</b>	AX Series Wireless Security Control Panel			<b>Page:</b>	1 of 6

## Preparation

---

1. Hik-Connect Client:IOS:V3.6.0 180922 / Android:V3.6.1 180928 or above
2. AX Series Wireless Security Control Panel,V1.0.0 or above

## How to Add Peripheral (Detector/Card/Keyfob) to the Control Panel by Hik-Connect

---


### 1. Add Peripheral to the Control Panel

You should add peripheral to the control panel before performing other operations such as arming or disarming.

**Before You Start**, Make sure the control panel is disarmed.

#### **Note**

Some control panel models do not support add zones or wireless devices remotely. You should add them to the control panel directly. For details, see the user manual of the wireless device.

- 1) Tap  enter the Scan QR Code page.
- 2) Scan the peripheral's QR code to add the peripheral.
- 3) Select a peripheral type, and create a name for the peripheral.

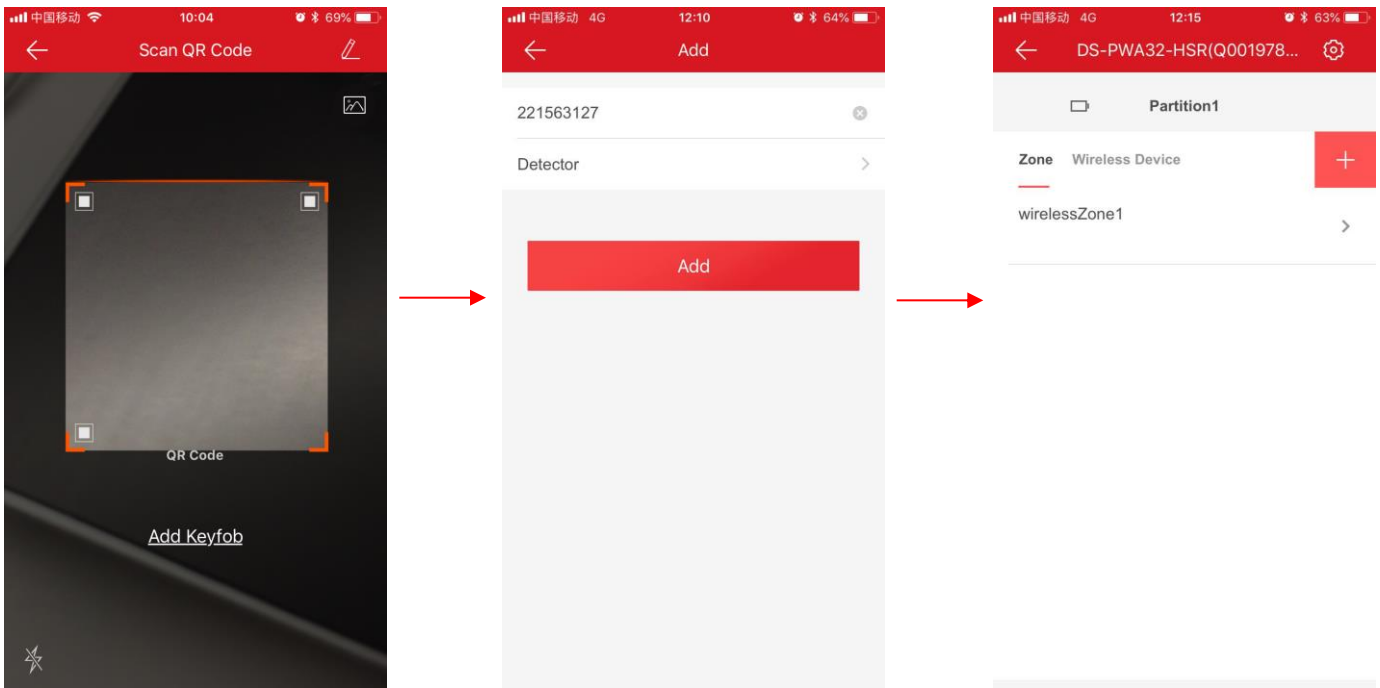
#### **Note**

When the adding peripheral is a detector, the detector will be linked to the zone. You can view the detector information in the Zone tab.

Up to 32 detectors can be linked to the zone

The added peripheral will be listed in the Zone tab or the Wireless Device tab.

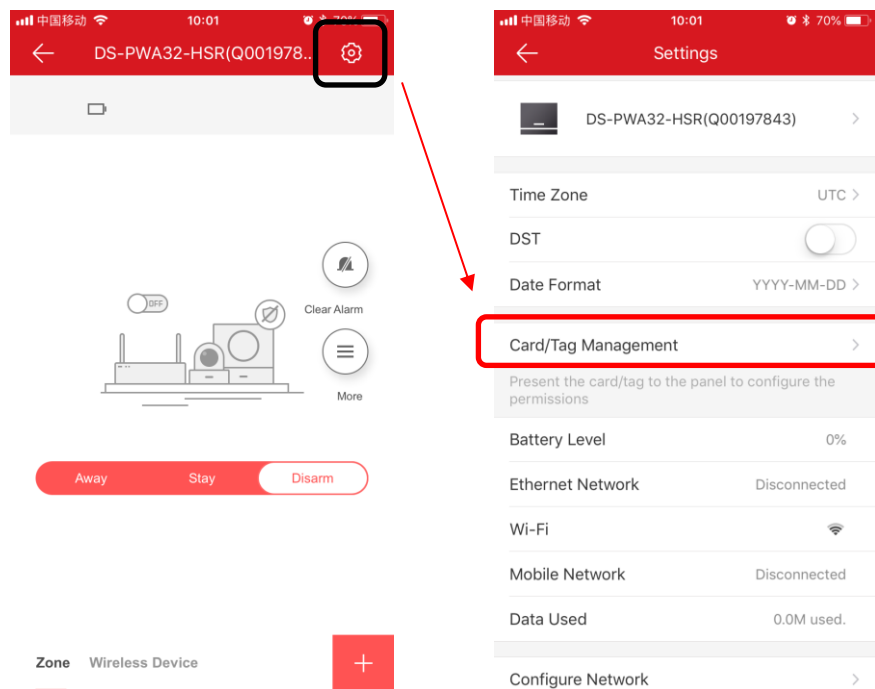
<b>Title:</b>	How to Add Peripheral (Detector/Card/keyfob) to the Control Panel by Hik-Connect	<b>Version:</b>	v1.0	<b>Date:</b>	10/10/2018
<b>Product:</b>	AX Series Wireless Security Control Panel			<b>Page:</b>	2 of 6



## 2. Add Card

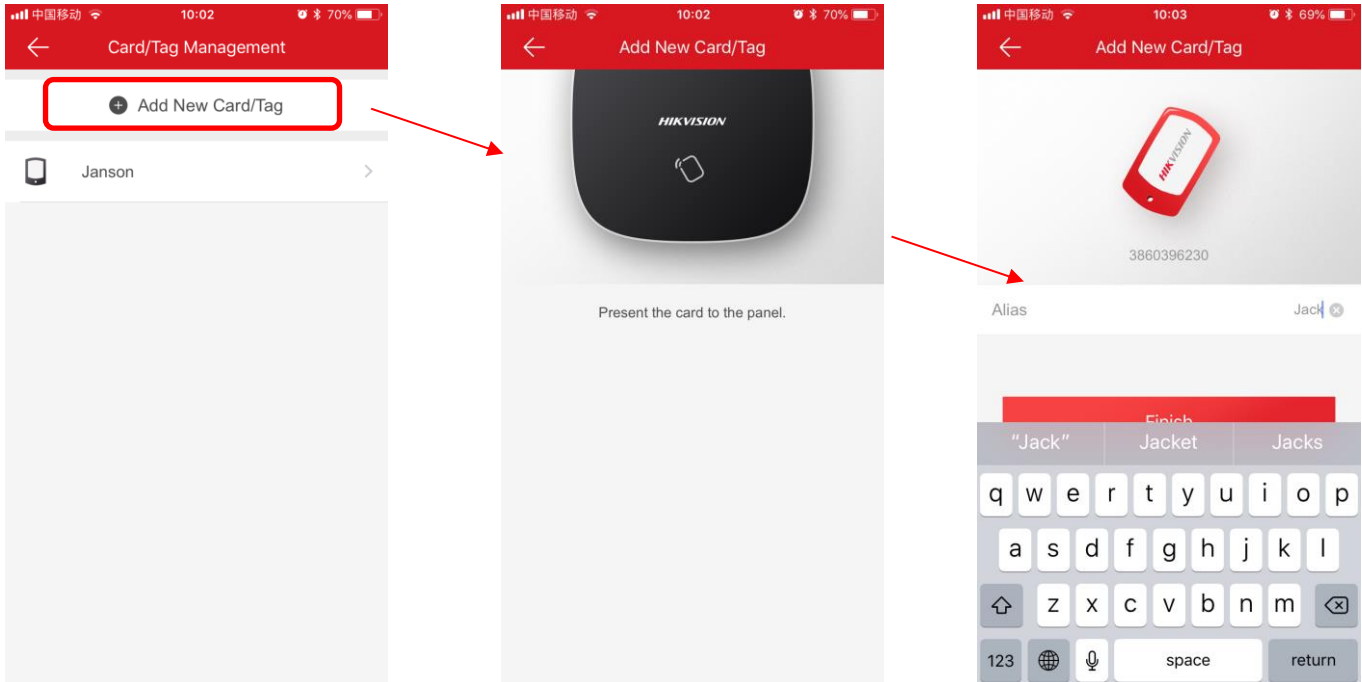
You can add card to the control panel. Use the card to arm, disarm, or clear alarm.

- 1) Select a control panel on the Hik-Connect page to enter the control panel management page.



<b>Title:</b>	How to Add Peripheral (Detector/Card/keyfob) to the Control Panel by Hik-Connect	<b>Version:</b>	v1.0	<b>Date:</b>	10/10/2018
<b>Product:</b>	AX Series Wireless Security Control Panel			<b>Page:</b>	3 of 6

- 2) Click “Add New Card /Tag” ,When hearing the voice prompt "Swipe Card", you should present the card on the control panel card presenting area. When hearing a beep sound, the card is recognized.
- 3) Create a card alias and tap Finish.




### 3. Add Keyfob

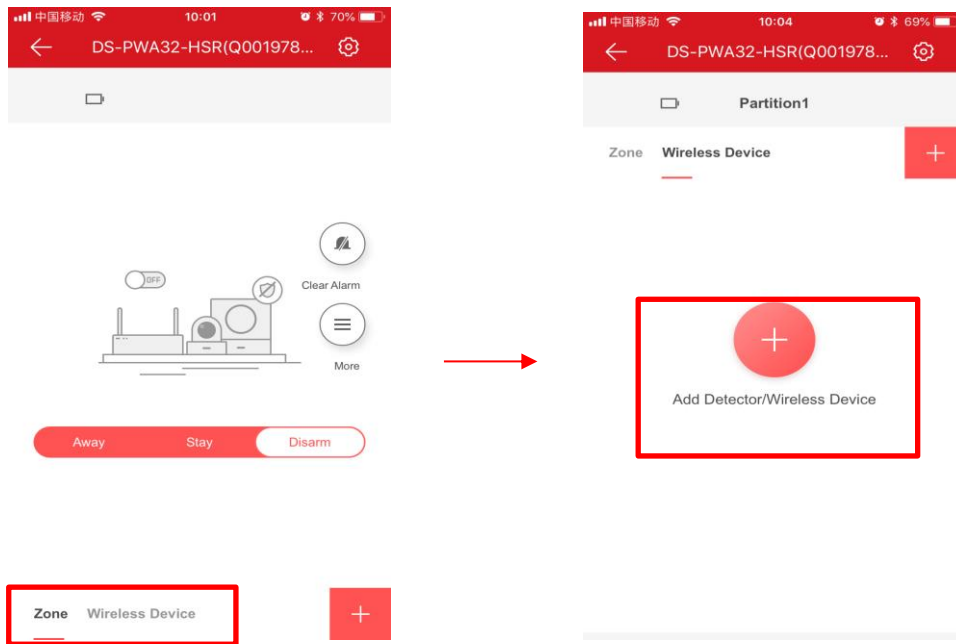
You can add keyfobs to the control panel and control partition arming/disarming status. You can also clear alarm when an alarm is triggered.

#### Note

Make sure the keyfob's frequency is the same as the control panel's

- 1) Tap  to enter the Scan QR Code page.

<b>Title:</b>	How to Add Peripheral (Detector/Card/keyfob) to the Control Panel by Hik-Connect	<b>Version:</b>	v1.0	<b>Date:</b>	10/10/2018
<b>Product:</b>	AX Series Wireless Security Control Panel			<b>Page:</b>	4 of 6

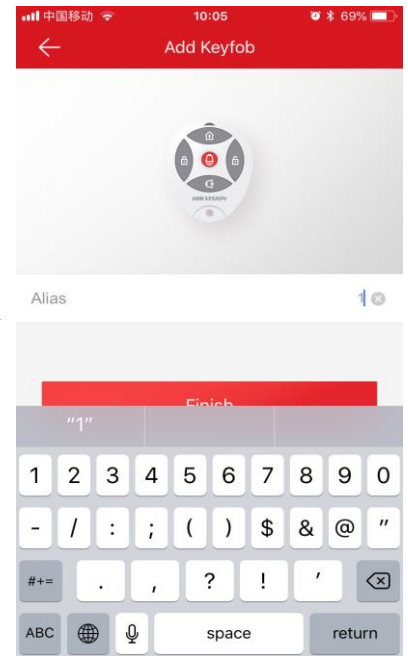
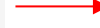
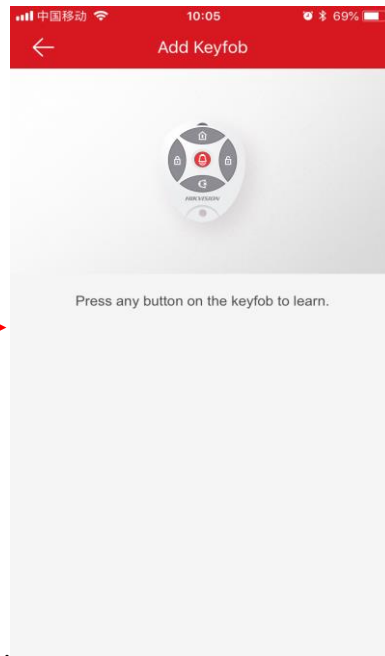
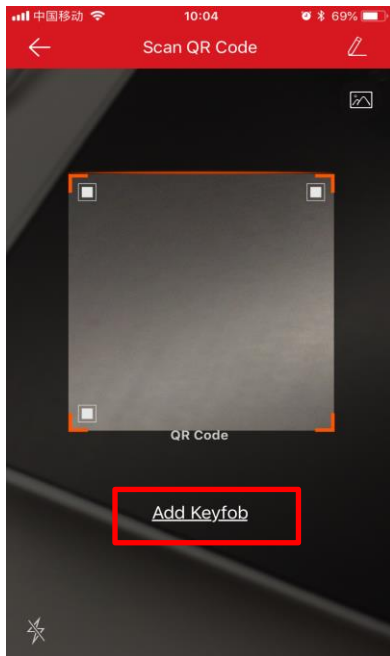


- 2) Click the Add keyfob, and then follow the instructions: press any button on the keyfob to learn, Create a name for the keyfob and tap OK.

**Note**

If your keyfob had added to other control panel, you need reset the keyfob.  
Step: Hold down Away arm button, at the same time insert battery, until the red light flashes three times, reset success.

<b>Title:</b>	How to Add Peripheral (Detector/Card/keyfob) to the Control Panel by Hik-Connect	<b>Version:</b>	v1.0	<b>Date:</b>	10/10/2018
<b>Product:</b>	AX Series Wireless Security Control Panel			<b>Page:</b>	5 of 6





<b>Title:</b>	How to Add Peripheral (Detector/Card/keyfob) to the Control Panel by Hik-Connect	<b>Version:</b>	v1.0	<b>Date:</b>	10/10/2018
<b>Product:</b>	AX Series Wireless Security Control Panel			<b>Page:</b>	6 of 6

**First Choice for Security Professionals**  
**HIKVISION Technical Support**