



# Facilitating Smarter and Safer Campuses

Hikvision's Integrated Security Solutions  
for Schools and Campuses

**HIKVISION**



# Technology for Student Safety & Security

Protecting campuses has become more complicated. Aside from the longstanding challenges associated with protecting students, staff, and visitors from physical harm, and protecting physical assets from theft and vandalism, the pandemic pushed classrooms to remote activity, challenging schools further.

Hikvision campus solutions help to reduce the risks of theft, vandalism, bullying, and violence, and provide administrators with actionable intelligence and response capabilities designed to limit the impact of those intent on inflicting damage, pain and suffering. Our product line makes the transition back to in-person learning easier for teachers, students and administrators, and our advanced technology and Artificial Intelligence (AI) algorithms support schools with a broad range of applications.

## Intelligence + Deterrence = Safety

K-12 facilities and educational campuses are vulnerable to internal and external threats. Hikvision provides technology that deters unwanted behavior. Hikvision security solutions can ensure the safety of students and staff across the entire campus and while in transit.

- Entrance
- Parking Lot
- Main Buildings
- Gyms & Sports Fields
- Campus
- Library
- Cafeteria
- Administration Building

Hikvision provides campuses with technologies aimed at reducing theft, vandalism, and violence. Our broad portfolio of products provides school systems with technology options capable of providing campus-wide coverage combined with HD clarity. This allows school resource officers to properly monitor student activities and assets, the key to preventing and managing disaster situations.

Hikvision's industry-leading analytics and deep learning technology deliver proactive response capabilities to threats, disasters, and active shooter situations by creating district-wide situational awareness.



# Advanced, Budget-Friendly Technology

## Deploy Security Technology on a Budget

Our price advantages provide schools the ability to deploy more life-saving technology while meeting budget requirements. High quality, advanced technology helps administrators do more while being good stewards of public funding. Hikvision's quality reduces life cycle costs and limits maintenance costs to repair or replace security equipment.

## Prevent Intruders & Active Shooters

A combination of Hikvision video, access control and intercom solutions deter unauthorized individuals from entering the building, reducing the risk of an incident or catastrophic event.

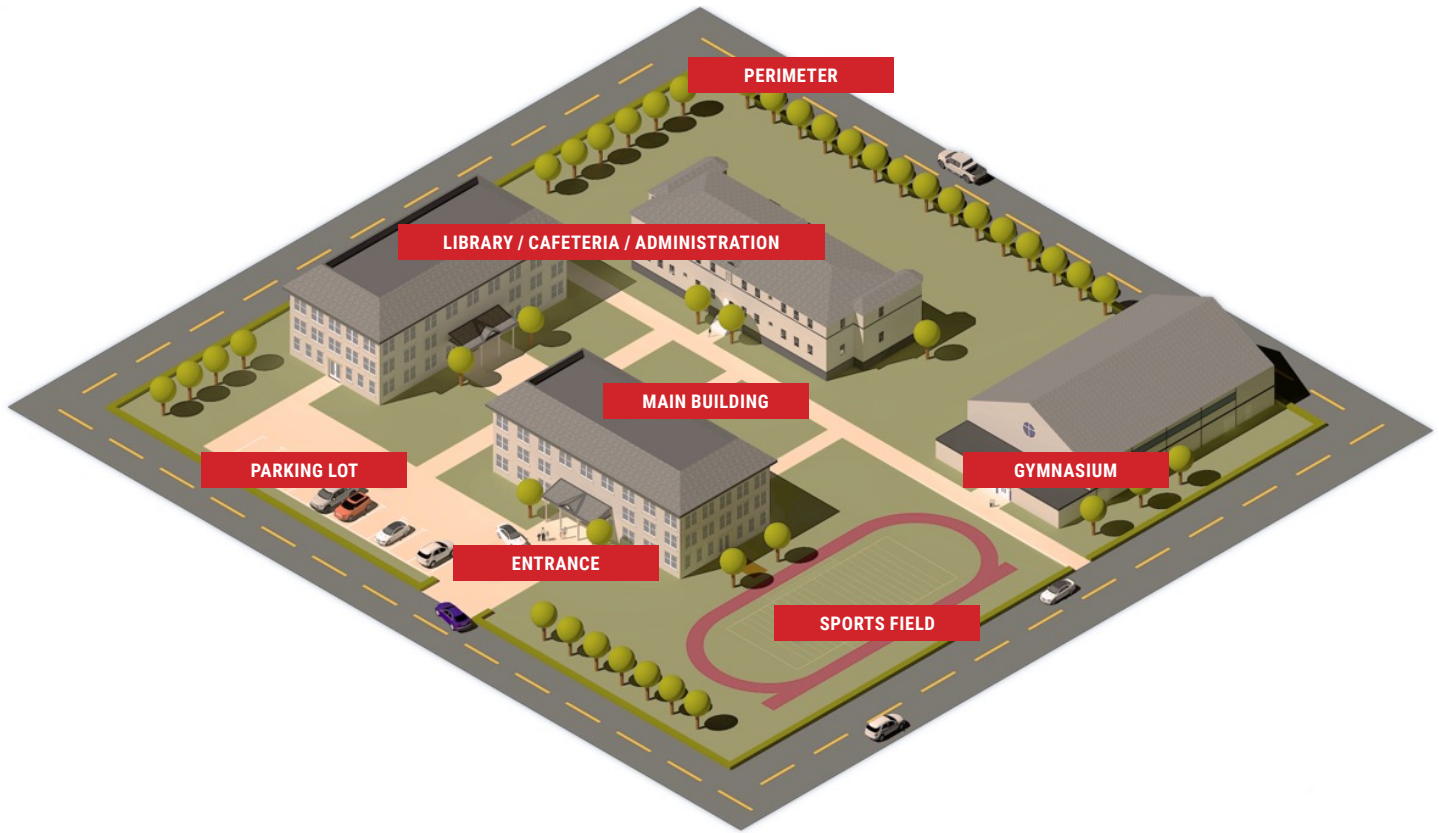
When emergencies happen, Hikvision's Emergency Mustering Management solution provides an efficient method for large-scale facility lockdowns and simplifies the emergency roll call process, ensuring staff and student safety. Most of all, it helps to keep people safe and allows first responders to quickly find people when they are missing from the mustering location.

## Visitor Management

Visitor management should start as soon as a vehicle drives onto school grounds and continue until an individual signs in at the office. Hikvision's comprehensive visitor management solution will help to minimize your risk and ensure only authorized people are permitted to enter the campus.

## High Quality Video Evidence

Hikvision recording solutions allow for easy access to recorded video to search for specific attributes and to help with incident investigations.



**// ENTRANCE:**

Biometric access control technologies ensure only verified and authorized students, staff and visitors gain entrance to facilities.

**// PARKING LOT:**

License Plate Recognition cameras with list filtering manage authorized entry and exit, ensuring only pre-authorized student and facility vehicles enter parking lots.

**// MAIN BUILDINGS (CLASSROOM):**

Our evacuation management system and HD security cameras ensure safety in classrooms and throughout the main buildings.

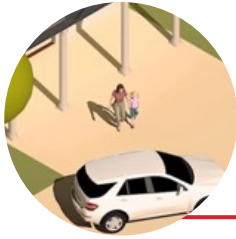
**// ATHLETIC FIELDS AND GYMS:**

AcuSense cameras and NVRs filter most false alarms and improve efficiency of perimeter protection. PanoVu cameras deployed in open areas ensure the safety of the students and protect the property.

**// LIBRARY/CAFETERIA/ADMINISTRATION BUILDING:**

Access control systems help schools maintain compliance by providing an audit trail of who entered certain areas and when. People Density can be monitored to ensure compliance with social distancing and to maintain occupancy levels.

# Entrance



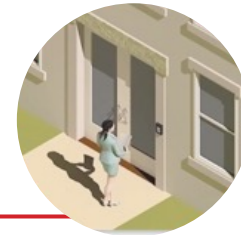
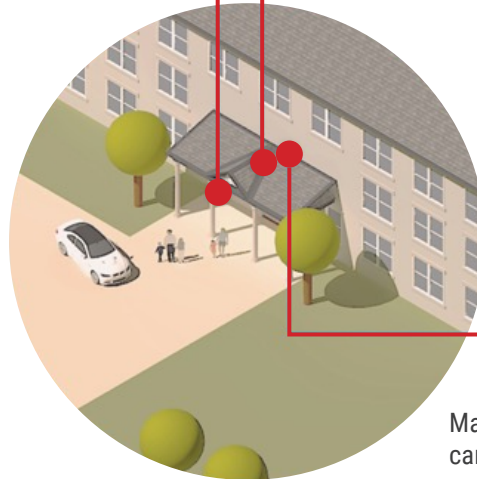
## Drop Off/Pickup

Schools face many challenges related to a high daily traffic volume of vehicles dropping off and picking up students. The school must also ensure that students are safe and only being picked up by authorized parents or guardians. Daycare facilities need to view the identity of the parent or pickup person at the front door.



## Late Students and Visitor Management

Intercom and access control technology can be used to greet and admit late arriving students or visitors, to allow authorized staff entry into the building, and to prevent unauthorized people from entering the campus.



## Access Control for Students & Staff

Managing authorized and unauthorized access to the campus and buildings is made simpler with access control solutions.

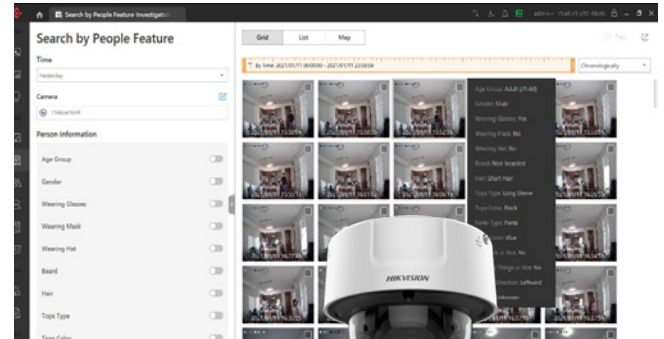
# Drop Off/Pickup



**LPR Camera**

- ❑ LPR (License Plate Recognition) Cameras Manage unauthorized vehicle parking
- ❑ Real-time vehicle authorized/unauthorized alarm
- ❑ History vehicle information search: central site & remote site
- ❑ Export vehicle analysis report

# Attribute Search



**DeepinView Camera**

- ❑ Unknown person reported via alarm notifications
- ❑ Generate features such as age group, gender, wearing glasses or not, and more
- ❑ Use Attribute Search to easily search video for specific features and accessories

# Student/Staff/Visitor Access Control



**Video Intercom**

Option 1: Call from the screen

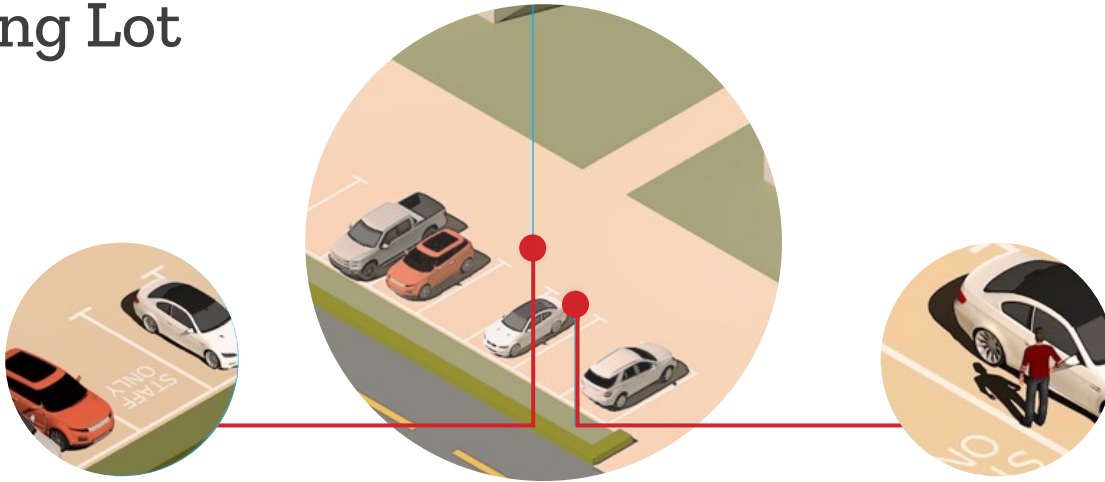
Option 2: Use a card reader

Late Students or Visitors: Call the staff to open the door

Staff:

- ❑ Use the Card fob to swipe in
- ❑ Door can now be opened for authorized person

# Parking Lot



## Unauthorized Vehicles

Prevent unauthorized people, known vandals, or expelled students from entering the campus.

## Vehicle Damage / Theft Complaints

Prevent unauthorized vehicle parking and quickly determine the cause of vehicle damage, accidents, or theft in parking areas.

# Unauthorized Vehicles



LPR Camera



LPR Camera

PanoVu Camera

- ❑ License mismatch from authorized list
- ❑ Verify alarm with related video with Panovu Camera
- ❑ Take action once unauthorized parking is confirmed
- ❑ Add the vehicle to the unauthorized list

- ❑ Vehicle damage or theft reported
- ❑ Verify incident related video via PanoVu & LPR camera
- ❑ Take action to resolve claim once damage has been confirmed

# Main Buildings & Classrooms



## Safety in Common Areas

Full coverage of common areas such as hallways to prevent and assess incidents.



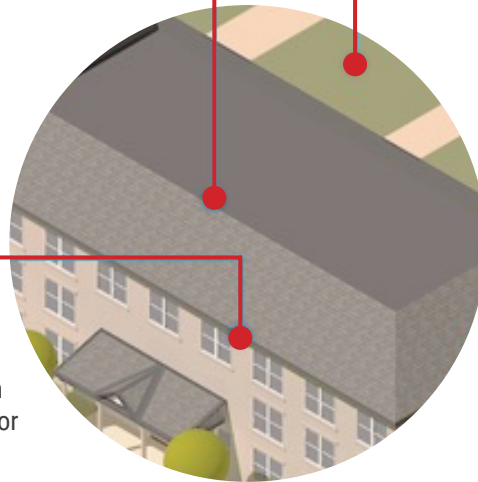
## Emergency Lockdown

Schools can implement emergency protocols for lockdowns and roll call to ensure everyone is present and accounted for.



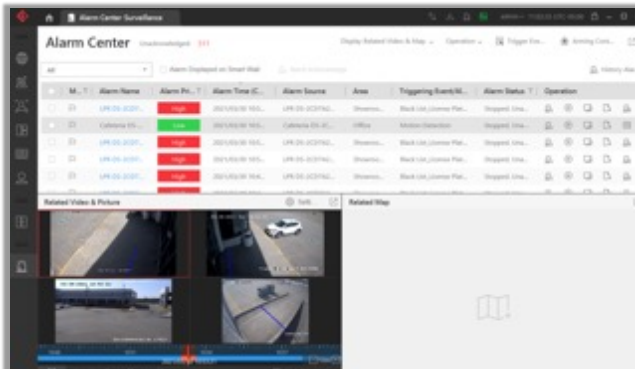
## Emergency Evacuation

Having an emergency mustering/roll call system can ensure everyone is present and accounted for and make it easier for emergency responders to find missing persons.



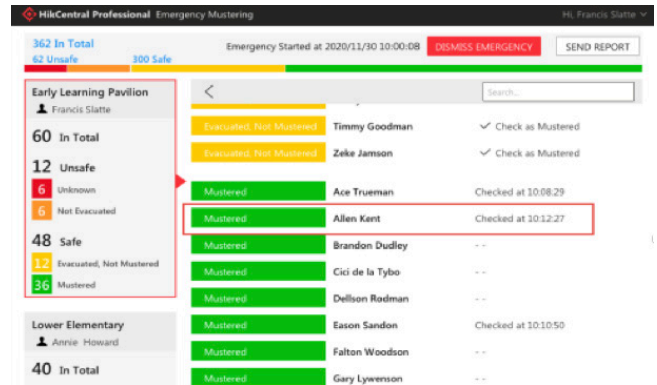


# Emergency Lockdown



- ❑ Pre-define the lockdown emergency group in HikCentral
- ❑ After an alarm is triggered, operators can check the relevant camera to confirm the alarm.
- ❑ Lock a specific door or pre-defined group
- ❑ Take action on missing personnel.

# Evacuation Solution



- ❑ Evacuation Solution
- ❑ Emergency Alarm Triggered
- ❑ Personnel Accountability Checklist.
- ❑ Roll Call Check-in
- ❑ Determine who is inside the building(s) or on campus versus those who have exited the building.
- ❑ Take action on missing personnel.



# Athletic Field/Gym



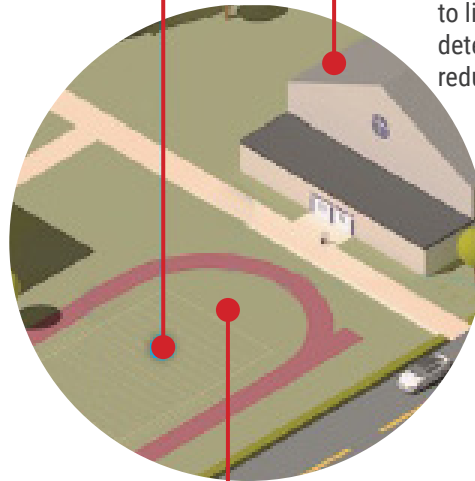
## Perimeter Protection

Prevent vandalism and trespassing around the campus perimeter and athletic fields.



## Mitigate Risk

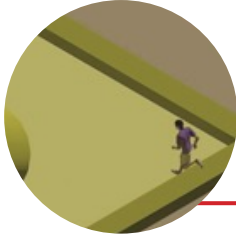
Injuries caused by accidents can lead to liability and potential lawsuits. Crime deterrence with security technology can help reduce incidents and risk.



## Crowd Gathering Detection

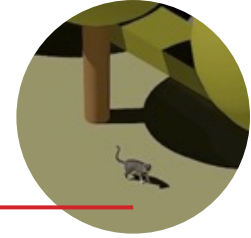
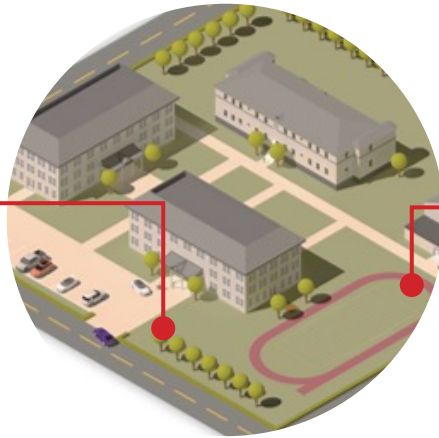
Identify crowds and prevent fights or bullying, improving student safety and reducing risk.

# Campus Perimeter Protection



## Perimeter Protection

Our range of perimeter protection solutions can provide better quality video for perimeters and of potential intruders, with added features to help deter crime.



## False Alarm Reduction

Improved alarm quality allows schools to focus on critical events, while reducing time and money spent responding to false alarms.

# Thermal Intrusion Detection



LPR Camera

- ❑ **Mitigate risk**  
See areas that you were never able to see before using thermal lenses.
- ❑ **Cost reduction**  
No need to install costly lighting or other perimeter protection to provide clear views at night.
- ❑ **Life safety**  
First responders can see intruders or those in need, even in dark areas or smoke filled rooms.

# Perimeter Trespassing Line Crossing Detection



AcuSense Camera



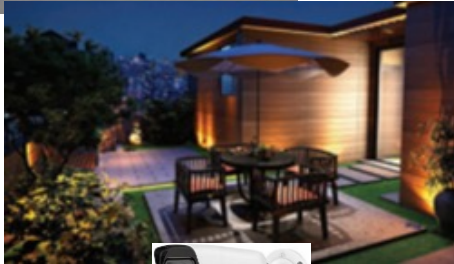
AcuSense NVR

- ❑ AcuSense cameras filter out most false alarms often caused by falling leaves, shaking trees, flickering lights, passing animals, and more.
- ❑ The AcuSense NVR can convert an existing camera into a smart false alarm filtering camera and reduce costs. Or use AcuSense cameras with built-in AI algorithms to significantly reduce false alarms and focus on critical events.

# Property Protection



**PanoVu  
Camera**



**ColorVu  
Camera**

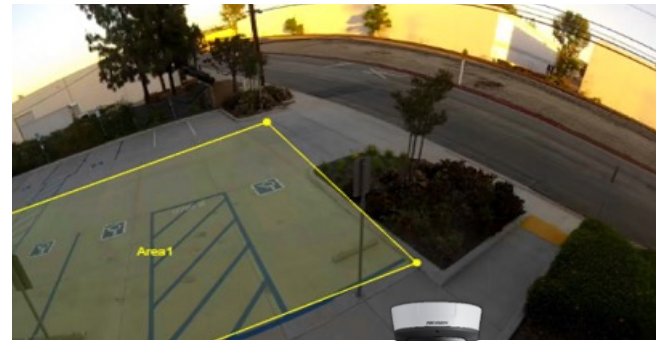
## **PanoVu Camera**

- ❑ Use a single high resolution camera with 180°/360° view
- ❑ Single IP for easy installation and configuration
- ❑ Great low light illumination performance

## **ColorVu Camera**

Hikvision's ColorVu imaging technology provides vivid images and video around the clock by using a high-performance sensor, a large iris, and gentle supplemental lighting in zero-light environments.

# Crowd Gathering Detection



**PanoVu  
Camera**

Crowd Gathering trigger conditions:

- ❑ Number of people in the defined area changed from one level to another level
- ❑ Periodically reporting the number of people in certain area

## **No Dead Spots**

A full 360-degree view ensures that all areas are covered, no dead spots.

## **Mitigate Risk**

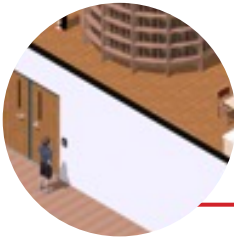
Detect student crowds and reduce risk of fights or bullying.

## **Reduce Costs**

Multiple views from a single camera with low maintenance and easy installation using one wire pull.



# Library/Cafeteria/Administration



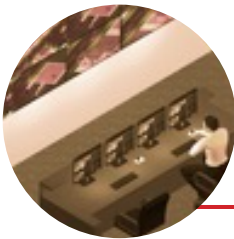
## Access Control

Limit admission to buildings or areas such as science labs, cafeterias and gyms that require restricted access by authorized persons only.



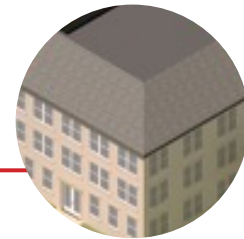
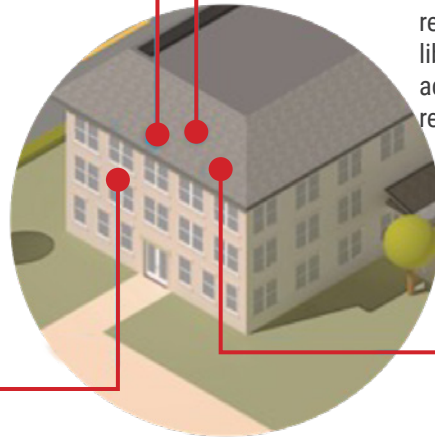
## Detect Occupancy Levels

Use people density detection to determine and restrict occupancy levels in indoor spaces, libraries or cafeterias and other areas that must adhere to social distancing and other occupancy requirements.



## Security Control Room

More easily manage all devices and receive notifications when device exceptions occur.



## Audio Recording

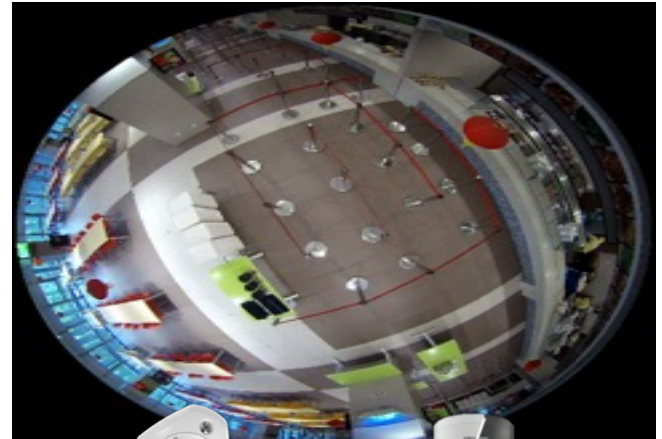
Audible alerts can be used for added deterrence or to protect students and staff.

# Access Control



- ❑ Monitor the cafeteria with high resolution cameras.
- ❑ View cash registers and food lines to reduce risk of theft and grazing.

# General Security



Fisheye Camera



DarkFighter Camera

- ❑ One fisheye camera at the ceiling's center can cover a wide area.
- ❑ Reduce overall project costs by using one camera to cover an area that would typically require up to four cameras.

# People Density Detection



People Counting Camera

The number of people currently in the building and the number of people allowed to enter the building are displayed on the HikCentral Control Client. If the number of people in the building reaches the capacity limit, the Control Client will prompt a notification to stop people from entering.

- ❑ Display icon will show red if the amount of people exceeds configured threshold
- ❑ Counting number can be configured to reset to zero automatically at a certain time

# Security Control Room



## Monitoring

Live View/Playback/Video Search/System Access

## Alarm Management

Alarm Notification/Alarm Handling/Advanced Alarm Rules

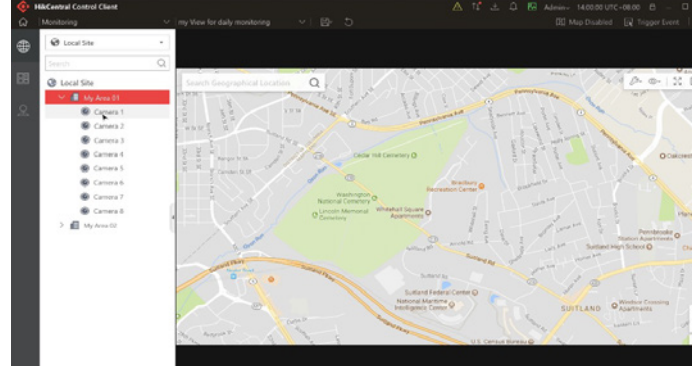
## Door Permission

Grant secure door access to authorized people.

## Device Health

Reduce risk by ensuring that all your devices are working properly around the clock.

# Video Management



## Live View:

Maximum 256 channels live view per control client.

Auto-adaptive window-split layout for easy operation.

## Playback:

Thumbnail and smooth drag for easy skimming of historical video.

## Video Search:

VCA search helps to retrieve desired video footage more efficiently.

## E-Map:

Easily locate cameras on the e-map for monitoring and response.

## System Access:

Accessible via desktop client, web client and mobile client for convenient system access.

# Alarm Management



## Alarm Notification:

Pop-up video on control client, video wall, mobile app, email alerts, and more.

Shows the alarm list, alarm linkage video and alarm location together in the same window.

## Alarm Handling:

Handles alarms efficiently with different methods like acknowledges, classifies, and comments.

## Advanced Alarm Rules:

Composite alarm strategy helps to vastly reduce false alarms.

Using an alarm escalation strategy, the alarm will continue until it's acknowledged, so that important alarms will not be missed.

**Hikvision USA Inc.**

18639 Railroad Street City of Industry, CA  
91748

**Hikvision Canada Inc.**

4848 Levy Street  
Saint-Laurent, Quebec H4R 2P1

**Cybersecurity Hotline**

Toll-free: +1-866-200-6690, press option 5  
Phone: +1-626-723-2100

**Contact Information**

Toll-Free: +1 866-200-6690 (U.S. and  
Canada)

Phone: +1 909-895-0400

Email: [verticals.usa@hikvision.com](mailto:verticals.usa@hikvision.com)

[hikvision.com](https://www.hikvision.com)

**Tech Support**

Toll-free: +1-866-200-6690, press option 1

U.S. Email: [techsupport.usa@hikvision.com](mailto:techsupport.usa@hikvision.com)

Canada Email: [techsupport.ca@hikvision.com](mailto:techsupport.ca@hikvision.com)

Connect with us:     